

STEP 1

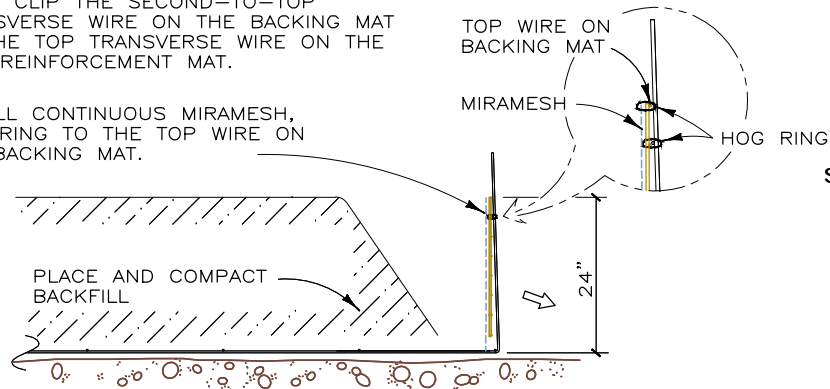
PLACE THE FIRST COURSE OF SOIL REINFORCEMENT MATS ON PREPARED FOUNDATION



STEP 2

PLACE THE BACKING MAT AGAINST THE INSIDE FACE OF THE SOIL REINFORCEMENT MAT. CLIP THE SECOND-TO-TOP TRANSVERSE WIRE ON THE BACKING MAT TO THE TOP TRANSVERSE WIRE ON THE SOIL REINFORCEMENT MAT.

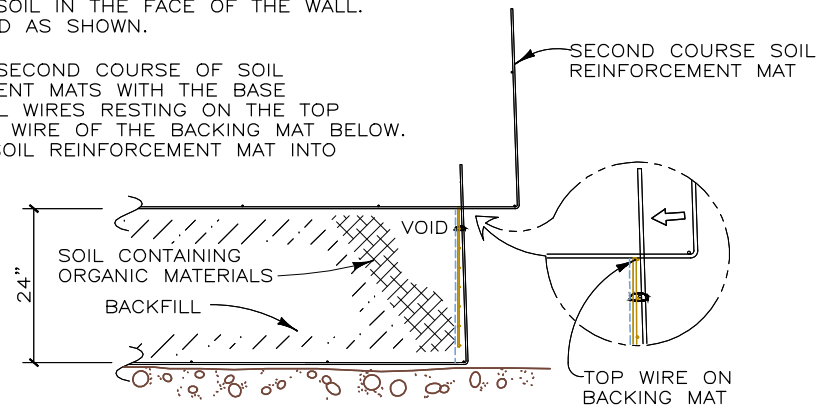
INSTALL CONTINUOUS MIRAMESH, HOG-RING TO THE TOP WIRE ON THE BACKING MAT.



STEP 3

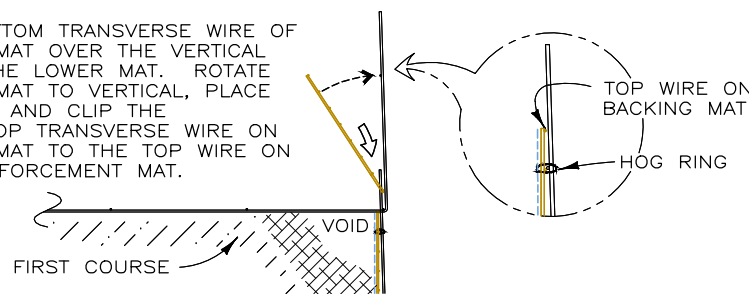
PLACE THE SOIL IN THE FACE OF THE WALL. LEAVE A VOID AS SHOWN.

PLACE THE SECOND COURSE OF SOIL REINFORCEMENT MATS WITH THE BASE LONGITUDINAL WIRES RESTING ON THE TOP TRANSVERSE WIRE OF THE BACKING MAT BELOW. SLIDE THE SOIL REINFORCEMENT MAT INTO ALIGNMENT.



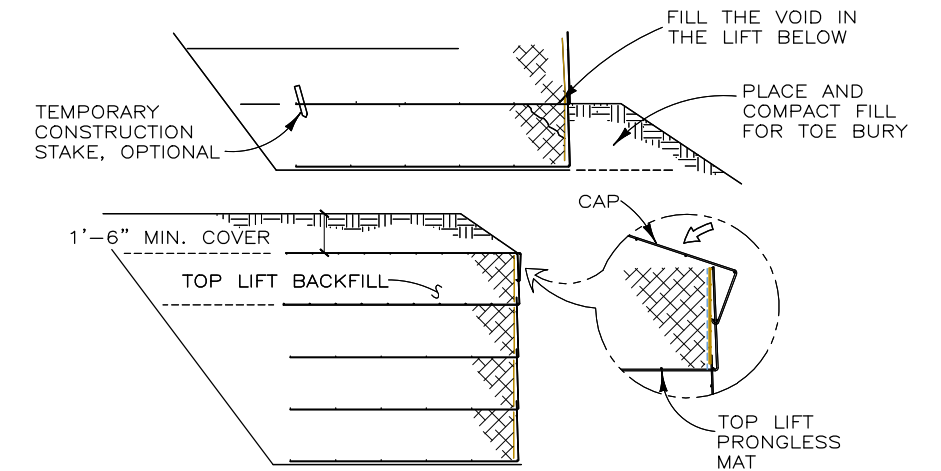
STEP 4

HOOK THE BOTTOM TRANSVERSE WIRE OF THE BACKING MAT OVER THE VERTICAL PRONGS ON THE LOWER MAT. ROTATE THE BACKING MAT TO VERTICAL, PLACE THE MIRAMESH AND CLIP THE SECOND-TO-TOP TRANSVERSE WIRE ON THE BACKING MAT TO THE TOP WIRE ON THE SOIL REINFORCEMENT MAT.



STEP 5

PLACE AND COMPACT THE BACKFILL AND ROCK TO THE BASE ELEVATION OF THE NEXT MAT. REPEAT STEPS 2 THROUGH 5 TO THE TOP LIFT.

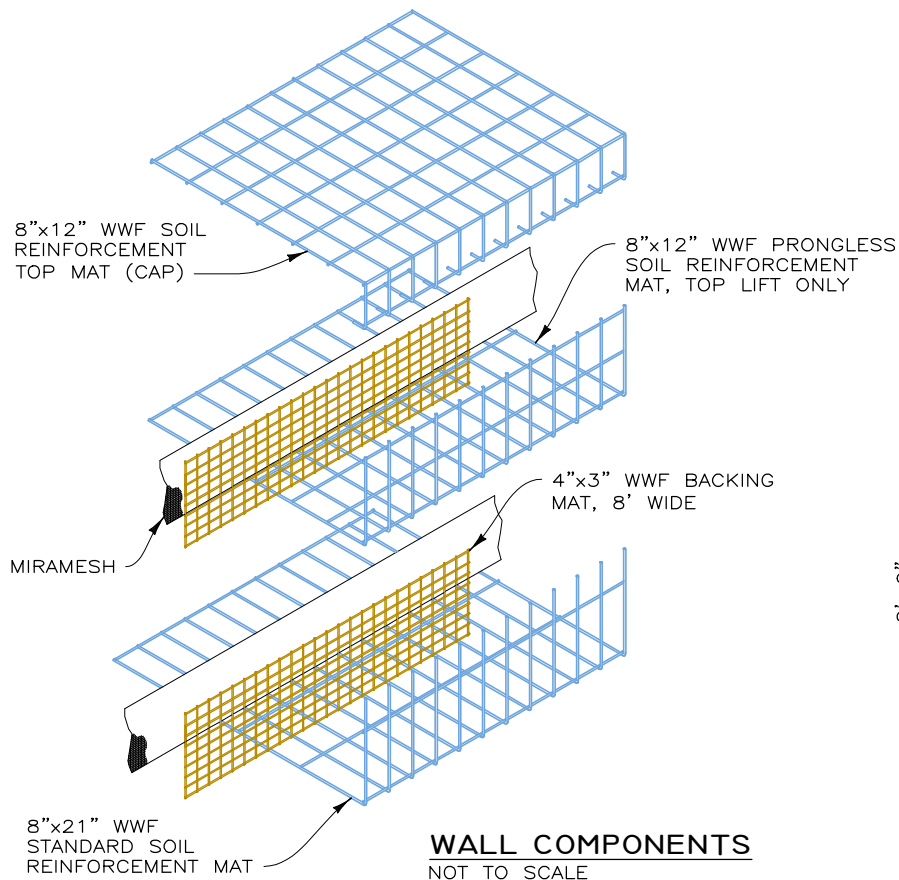


STEP 6: TOP LIFT

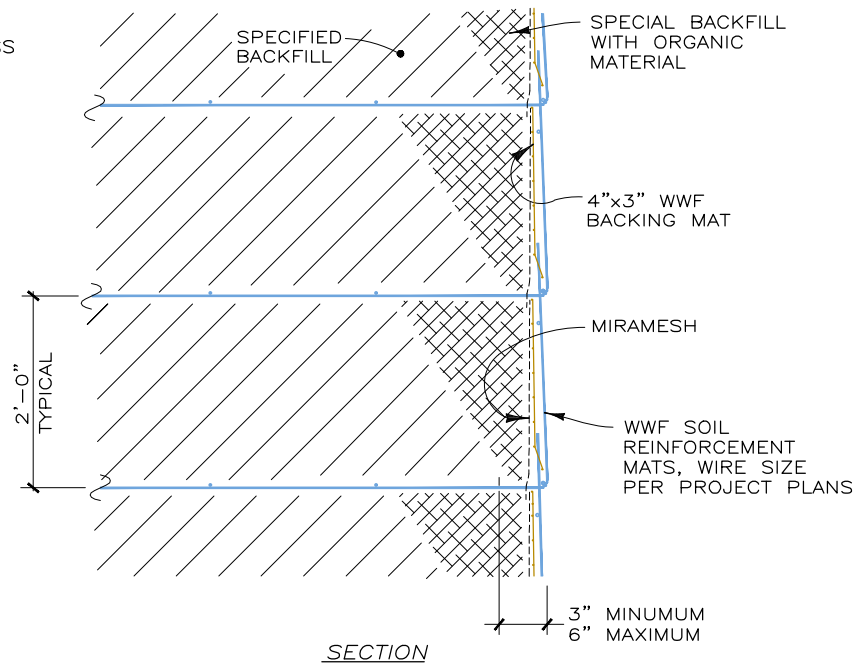
PLACE THE TOP LIFT PRONGLESS MAT, BACKING MAT, AND CONTINUOUS MIRAMESH. PLACE AND COMPACT BACKFILL AND ROCK IN THE TOP LIFT. HOOK THE CAP OVER THE MIDDLE TRANSVERSE WIRE ON THE PRONGLESS MAT, AND ROTATE INTO PLACE. PLACE AND COMPACT COVER OVER TOP MAT TO 1'-6" MINIMUM DEPTH.

CONSTRUCTION SEQUENCE

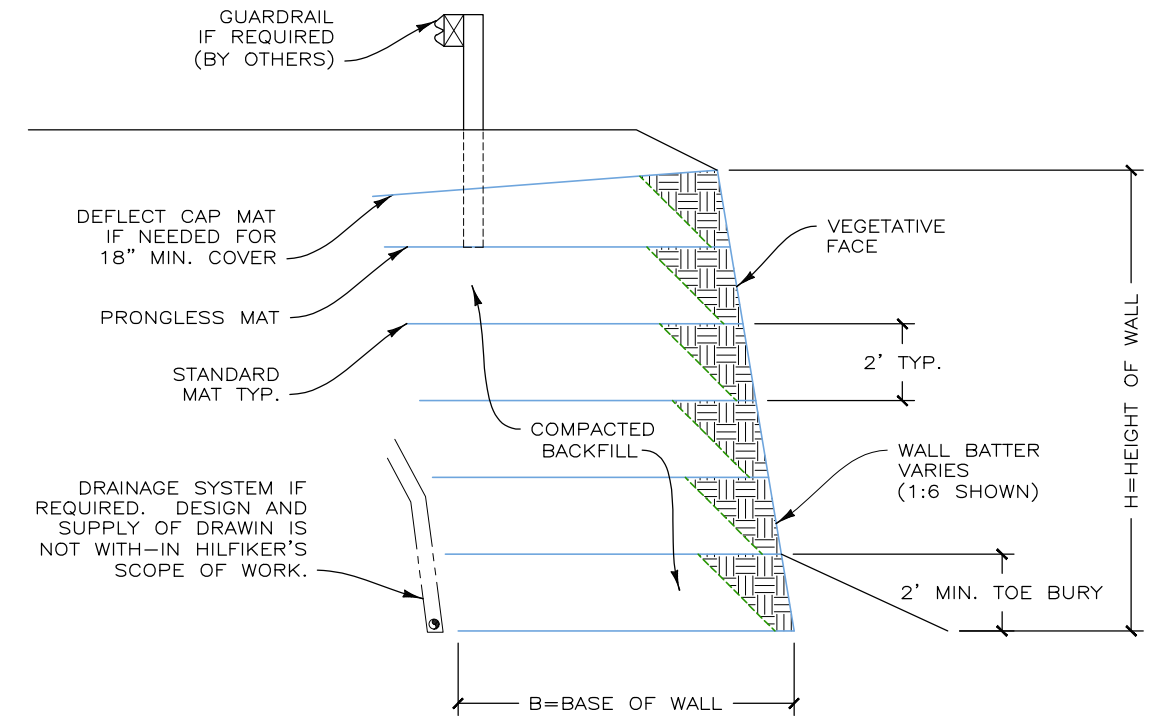
NOT TO SCALE



WALL COMPONENTS
NOT TO SCALE



VEGETATIVE WALL FACE DETAIL
NOT TO SCALE

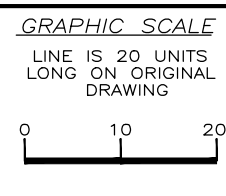


TYPICAL SECTION 1:6 BATTER
SCALE: 1" = 5'

STANDARD DETAILS WELDED WIRE WALL 8' WIDE MATS

THIS DRAWING IS FURNISHED SOLELY FOR THE USE OF OR IN CONNECTION WITH THIS PROJECT AND THE PROPRIETARY INFORMATION SHOWN HEREON IS NOT TO BE TRANSMITTED TO ANY OTHER ORGANIZATION WITHOUT SPECIFIC AUTHORIZATION BY THE HILFIKER COMPANY. HILFIKER RETAINING WALLS ARE PROTECTED BY ONE OR MORE OF THE FOLLOWING PATENTS: 243,613; 243,697; 288,616; 4,117,686; 4,329,089; 4,324,508; 4,391,557; 4,505,621; 4,343,318; 4,661,023; 4,856,939; 4,929,125; 5,076,735; 5,647,695; 5,722,799; 5,733,072; 6,357,970B1; 6,874,975B2; 7,033,118B2; AND OTHERS. OTHER PATENTS PENDING (2008)

REV.NO.	DATE	BY	DESCRIPTION
1	6 JAN 03	DR	MINOR REVISIONS
2	17 OCT 08	AMJ	UPDATED BORDER, MINOR REVISIONS
3	1 AUG 12	AMJ	ADDED COLOR TO DETAILS
4	23 OCT 13	AMJ	MINOR REVISIONS, FIXED LEADERS
5	1 AUG 22	NMD	ADDED MIRAMESH
6	27 JUN 23	DH	NEW DETAILS WITH FOUNDATION MAT



PROJ.MGR.
ENGINEER
CADD BY
HRW

HILFIKER RETAINING WALLS

HW

1902 Hilfiaker Lane
Eureka, CA 95503-5711
TOLL-FREE 800.762.8962
PH 707.443.5093 FAX 707.443.2891
WEBSITE www.hilfiaker.com E-MAIL info@hilfiaker.com

SINCE 1902
QUALITY PRODUCTS

DWG DATE
NOV 98
REVISION DATE
27 JUN 23
SCALE
NOTED

STANDARD DRAWING	PROJECT NO.
WELDED WIRE RETAINING WALL 24" LIFTS	SHEET 1
STANDARD DETAILS	OF 3