

TOMBOY ROAD

Welded Wire Retaining Wall

*To Replace Failed Timber Wall
Telluride, Colorado*

Owner: San Miguel County

Contractor: EarthTech

Designed by: MacIntosh Engineering & Development Co.
Summer 2000

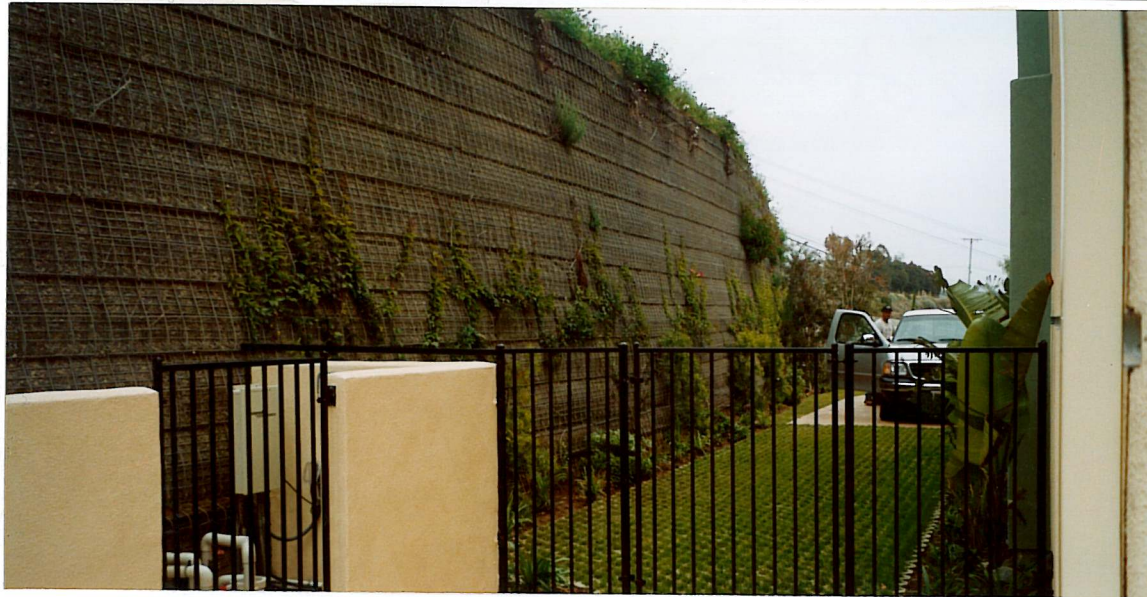
Max. Height 24' 1488 Sq. Ft. Wall Face

P.O. Box 2012 Eureka, CA - 95502-2012
Phone (707)443-5093 Fax (707)443-2891
Toll Free (800)762-8962
email info@hilfiker.com
web: <http://www.hilfiker.com>



**HILFIKER
RETAINING
WALLS**





RANCHO MALIBU ESTATES, LATIGO CANYON

Welded Wire Retaining Wall

(Renamed Malibu Pacifica) Orange County, CA

Photos taken April 2002. Since construction in winter 1990/91, these walls have survived earthquakes, fires and floods.

Contractor: Baker Construction Engineer: SHN Consulting Engineers 44,000 Sq. Ft. Wall Face

P.O. Box 2012 Eureka, CA - 95502-2012

Phone (707)443-5093 Fax (707)443-2891 Toll Free (800)762-8962
 email info@hilfiker.com web: <http://www.hilfiker.com>



HILFIKER RETAINING WALLS





TRACT 13191, DANA POINT
Welded Wire Retaining Wall, 18" Lifts

Orange County, California

Owner: Seastar, Inc. Contractor: Baker Construction Engineer: SHN
 Fall/Winter 1989 Max. Height 18 Feet 2,060 Sq. Ft.



HILFIKER RETAINING WALLS

P.O. Box 2012 Eureka, CA - 95502-2012
 Phone (707)443-5093 Fax (707)443-2891
 Toll Free (800)762-8962 email info@hilfiker.com
 web: <http://www.hilfiker.com>





Dec. 2000 90040-W



P.O. Box 2012 Eureka, CA - 95502-2012
 Phone (707)443-5093 Fax (707)443-2891
 Toll Free (800)762-8962 email info@hilfiker.com
 web: <http://www.hilfiker.com>

HILFIKER RETAINING WALLS



TACOMA UNION STATION
Welded Wire Retaining Wall, 18" Lifts

Tacoma, Washington
 Contractor: Terrain Corporation
 Fall 1991 12,400 Sq. Ft



Dec. 2000 90040-W



P.O. Box 2012 Eureka, CA - 95502-2012
 Phone (707)443-5093 Fax (707)443-2891
 Toll Free (800)762-8962 email info@hilfiker.com
 web: <http://www.hilfiker.com>

HILFIKER RETAINING WALLS



TACOMA UNION STATION
Welded Wire Retaining Wall, 18" Lifts

Tacoma, Washington
 Contractor: Terrain Corporation
 Fall 1991 12,400 Sq. Ft



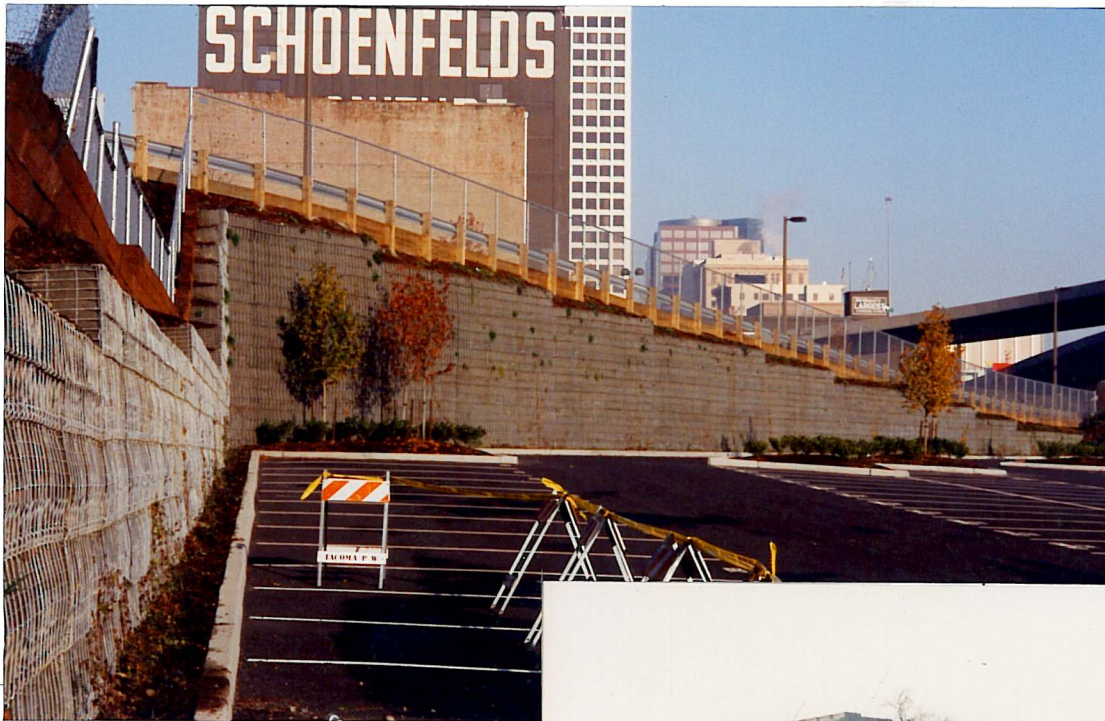
TACOMA UNION STATION
Welded Wire Retaining Wall, 18" Lifts
 Tacoma, Washington
 Contractor: Terrain Corporation
 Fall 1991 12,400 Sq. Ft



HILFIKER RETAINING WALLS

P.O. Box 2012 Eureka, CA - 95502-2012
 Phone (707)443-5093 Fax (707)443-2891
 Toll Free (800)762-8962 email info@hilfiker.com
 web: <http://www.hilfiker.com>





TACOMA UNION STATION
Welded Wire Retaining Wall, 18" Lifts
 Tacoma, Washington
 Contractor: Terrain Corporation
 Fall 1991 10,000 Sq. Ft.



P.O. Box 2012 Eureka, CA - 95502-2012
 Phone (707)443-5093 Fax (707)443-2891
 Toll Free (800)762-8962 email info@hilfiker.com
 web: <http://www.hilfiker.com>

HILFIKER RETAINING WALLS





HILFIKER RETAINING WALLS

P.O. Box 2012 - Eureka, CA - 95502-2012
 Phone (707)443-5093

Fax (707)443-2891 - Toll Free (800)762-8962



WOLF CREEK ROAD

Welded Wire Retaining Wall, 24" Lift

Unita National Forest, Wasatch, Utah

Agency: Dept. of Transportation, Federal Highway Administration

Contractor: Wolf Excavating

Summer 1997

15,856 Sq. Ft.,



**WOLF CREEK ROAD - PLH-PFH 5-2(3)
WELDED WIRE WALL - 18" Lifts**

Uinta National Forest, Wasatch County, Utah

U.S. Dept of Transportation - Federal Hwy Administration
Contractor: Stimpel-Wiebelhaus Assoc. Wall Design: FHWA
7092 Sq. Ft. October 1996

HILFIKER RETAINING WALLS



P.O. Box 2012 - Eureka, CA - 95502-2012
Ph. (707)443-5093
Fax (707)443-2891 - Toll Free (800)762-8962





DEER CREST DEVELOPMENT PROJECT
Welded Wire Retaining Wall, Black Wire, Rock in Face

Deer Valley Ranch, Wasatch County, Utah
Owner: Deer Crest Associates, Inc.
Wall Design: Geotechnical Design Services
August - December 1997 26,320 Sq. Ft.

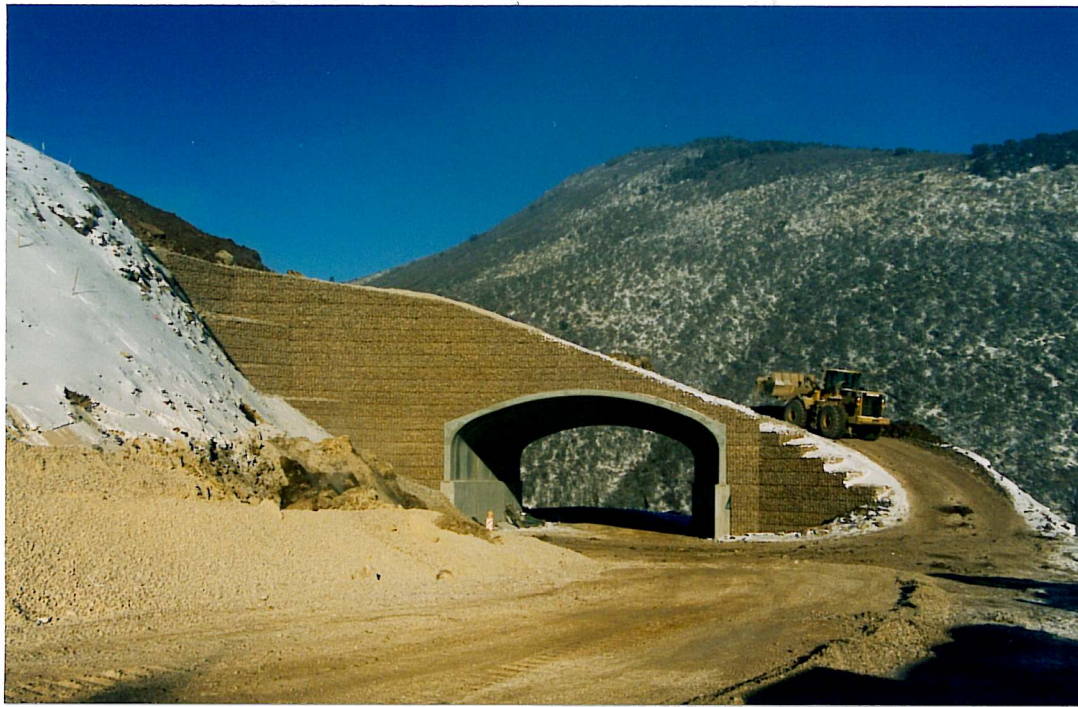


P.O. Box 2012 - Eureka, CA - 95502-2012
Phone (707)443-5093

Fax (707)443-2891 - Toll Free (800)762-8962

HILFIKER RETAINING WALLS





SKI BRIDGE "C" AND JORDANELLE VIEW DRIVE
 Deer Crest Development, Park City/Deer Valley, Utah
Welded Wire Retaining Wall, Black Wire, Rock in Face
 Owner: Deer Crest Associates, ILC., LCC Properties Group, L.C.
 Wall Design: Geotechnical Design Services
 July-October 1998 3,600 and 24,936 Sq. Ft.



HILFIKER RETAINING WALLS

P.O. Box 2012 - Eureka, CA - 95502-2012
 Phone (707) 443-5093
 Fax (707) 443-2891 - Toll Free (800)762-8962





Feb.99 961223AW



P.O. Box 2012 - Eureka, CA - 95502-2012
Phone (707)443-5093
Fax (707)443-2891 - Toll Free (800)762-8962



HILFIKER RETAINING WALLS

JORDANELLE VIEW DRIVE

Deer Crest Development, Park City/Deer Valley, Utah
Welded Wire Retaining Wall, Black Wire, Rock in Face
Owner: Deer Crest Associates, ILC., LCC Properties Group, L.C.
Wall Design: Geotechnical Design Services
July-August 1998 24,936 Sq. Ft.



THE NATURAL LOOK

This wall was built to support a transmission tower. It replaced a burned-out wooden cribwall. The bottom photos show the same wall after hydroseeding.



HILFIKER RETAINING WALLS

P.O. Box 2012 Eureka, CA - 95502-2012
 Phone (707)443-5093 Fax (707)443-2891
 Toll Free (800)762-8962 email info@hilfiker.com
 web: <http://www.hilfiker.com>



SOUTHERN CALIFORNIA EDISON
Welded Wire Retaining Wall with Hydroseeded Face

Owner: Southern California Edison
 1979



PALOMARES HILLS

**18" Welded Wire Retaining Walls
Castro Valley, Alameda County, CA**

Engineer: MacIntosh Engineering and Development
Contractor: Kiewit-Pacific and Top Grade Construction
1990 and 1994



HILFIKER RETAINING WALLS

P.O. Box 2012 - Eureka, CA - 95502-2012

Ph. (707)443-5093

Fax (707)443-2891 - Toll Free (800)762-8962





**HENDERSON BOULEVARD, Olympia, WA.
WELDED WIRE RETAINING WALL**

4962 Sq. Ft.

WASHINGTON STATE DEPT. OF TRANSPORTATION

Wall Design by:, Washington D.O.T.

Contractor, Lara & Kuebler, Inc.

Spring 1985



HILFIKER RETAINING WALLS

P.O. Box 2012 - Eureka, CA - 95502-2012 - Ph. (707)443-5093 - Fax (707)443-2891 - Toll Free (800)762-8962





HYDROSEEDED WELDED WIRE WALLS
Various Locations in California

HILFIKER RETAINING WALLS

P.O. Box 2012 - Eureka, CA - 95502-2012 - Ph. (707)443-5093 - Fax (707)443-2891 - Toll Free (800)762-8962





P.O. Box 2012 - Eureka, CA - 95502-2012
Ph. (707)443-5093
Fax (707)443-2891 - Toll Free (800)762-8962



HILFIKER RETAINING WALLS

STANISLAUS NATIONAL FOREST - FRASER FLAT
18" Welded Wire Walls
U.S.D.A. / U.S.F.S.



Dec2000 HRW 890720-1



HILFIKER RETAINING WALLS

P.O. Box 2012 Eureka, CA - 95502-2012
Phone (707)443-5093 Fax (707)443-2891
Toll Free (800)762-8962 email info@hilfiker.com
web: <http://www.hilfiker.com>



CORDINIU WINE FACILITY

Welded Wire Retaining Wall

Napa, California

Owner: Private Contractor: Heide & Williams, Inc.
Spring 1991 58,076 Sq. Ft.



May 2001 HRW 951218:AW



P.O. Box 2012 Eureka, CA - 95502-2012
 Phone (707)443-5093 Fax (707)443-2891
 Toll Free (800)762-8962 email info@hilfiker.com
 web: <http://www.hilfiker.com>



HILFIKER RETAINING WALLS

GENERAL HITCHCOCK HIGHWAY/MOUNT LEMMON

24" Welded Wire Retaining Wall, showing Guard Rail

Coronado National Forest, Near Tucson, Pima County, AZ

Owner: U.S. D.O.T., FHWA Contractor: Granite Construction

Designed by: FHWA and MacIntosh Engineering
 June-November 1996 29,000 Sq. Ft. Wall Face



POWDERBIRD GUIDES HELIPORT
Welded Wire Retaining Wall (4,704 Sq. Ft.)
Snowbird, Utah

Owner: Wasatch PowderBird Guides
Contractor: Wolff Excavating Inc.
Engineer: Agra Earth & Environmental
Summer 1993



HILFIKER RETAINING WALLS



P.O. Box 2012 - Eureka, CA - 95502-2012 - Ph. (707)443-5093 - Fax (707)443-2891 - Toll Free (800)762-8962



POWDERBIRD GUIDES HELIPORT
Welded Wire Retaining Wall (4,704 Sq. Ft.)
Snowbird, Utah

Owner: Wasatch PowderBird Guides
Contractor: Wolff Excavating Inc.
Engineer: Agra Earth & Environmental
Summer 1993



HILFIKER RETAINING WALLS



P.O. Box 2012 - Eureka, CA - 95502-2012 - Ph. (707)443-5093 - Fax (707)443-2891 - Toll Free (800)762-8962



TELLURIDE PARKING STRUCTURE
Welded Wire Retaining Wall, 24" Lift (11,856 Sq. Ft.)
Telluride Mountain Village
Owner: Metropolitan District
 Contractor, Shaw Construction
 Designed By: MacIntosh Engineering and Development.
 October/November 1995

Sept. 1996 HRW 950404EW



HILFIKER RETAINING WALLS



P.O. Box 2012 - Eureka, CA - 95502-2012 - Ph. (707)443-5093 - Fax (707)443-2891 - Toll Free (800)762-8962



WILLOW CREEK TRUCK PASSING LANE

Welded Wire Retaining Wall

Willow Creek, California

Owner: CALTRANS Contractor: Kiewit Pacific

Designed by: CALTRANS

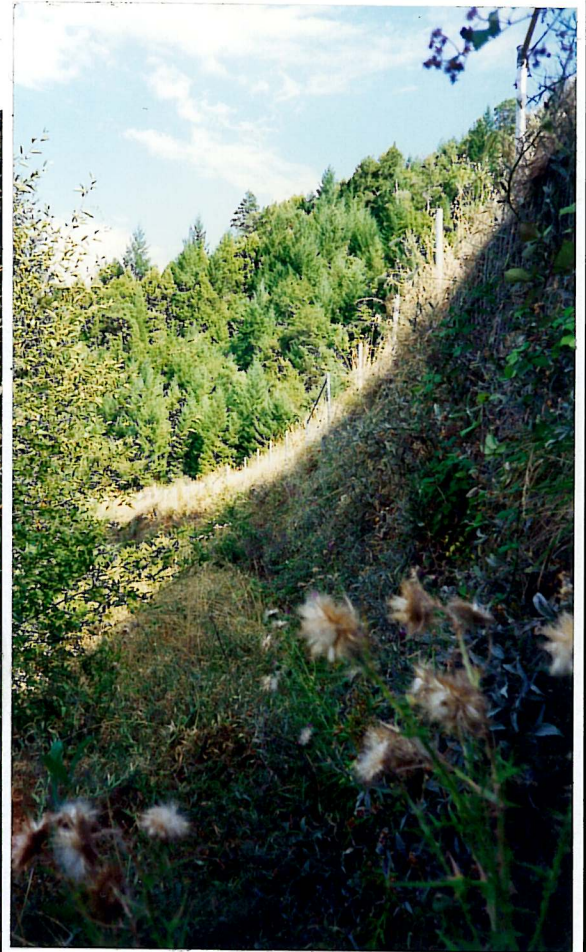
Spring 1990 16,152 Sq. Ft.



P.O. Box 2012 Eureka, CA - 95502-2012
Phone (707)443-5093 Fax (707)443-2891
Toll Free (800)762-8962 email info@hilfiker.com
web: <http://www.hilfiker.com>

HILFIKER RETAINING WALLS





WILLOW CREEK TRUCK PASSING LANE

Welded Wire Retaining Wall

Willow Creek, California

Owner: CALTRANS Contractor: Kiewit Pacific

Designed by: CALTRANS

Spring 1990 16,152 Sq. Ft.



HILFIKER RETAINING WALLS

P.O. Box 2012 Eureka, CA - 95502-2012

Phone (707)443-5093 Fax (707)443-2891

Toll Free (800)762-8962 email info@hilfiker.com

web: <http://www.hilfiker.com>





STEAMBOAT ROAD # 38 RECONSTRUCTION

Welded Wire Retaining Wall

Umpqua National Forest, Roseburg, Oregon
Owner: USDA - Forest Service Contractor: Roseburg Paving Company
Designed by: USDA - FS
Spring 1992 3,988 Sq. Ft.



HILFIKER RETAINING WALLS

P.O. Box 2012 Eureka, CA - 95502-2012
Phone (707)443-5093 Fax (707)443-2891
Toll Free (800)762-8962 email info@hilfiker.com
web: <http://www.hilfiker.com>





OREGON CITY BYPASS

Welded Wire Retaining Wall

Clackamas County, Oregon

Contractor: Emery & Sons Construction

Designed by: MacIntosh Engineering and Development

Fall 1992 900 Sq. Ft.



HILFIKER RETAINING WALLS

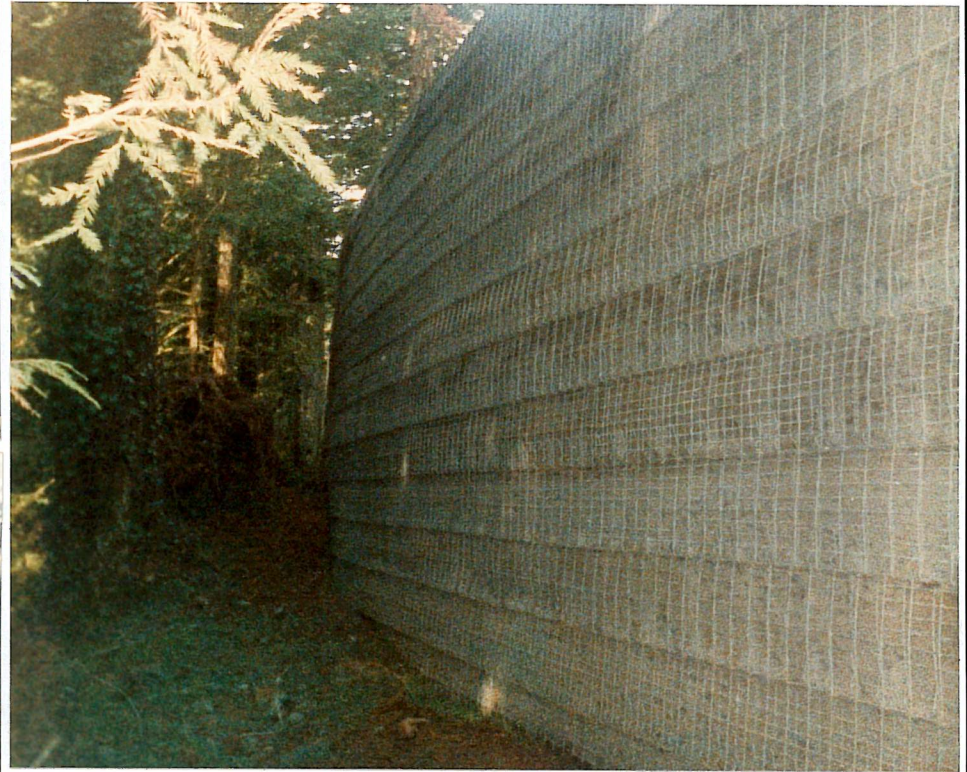
P.O. Box 2012 Eureka, CA - 95502-2012

Phone (707)443-5093 Fax (707)443-2891

Toll Free (800)762-8962 email info@hilfiker.com

web: <http://www.hilfiker.com>





Dec 2000



P.O. Box 2012 Eureka, CA - 95502-2012
 Phone (707)443-5093 Fax (707)443-2891
 Toll Free (800)762-8962 email info@hilfiker.com
 web: http://www.hilfiker.com

HILFIKER RETAINING WALLS

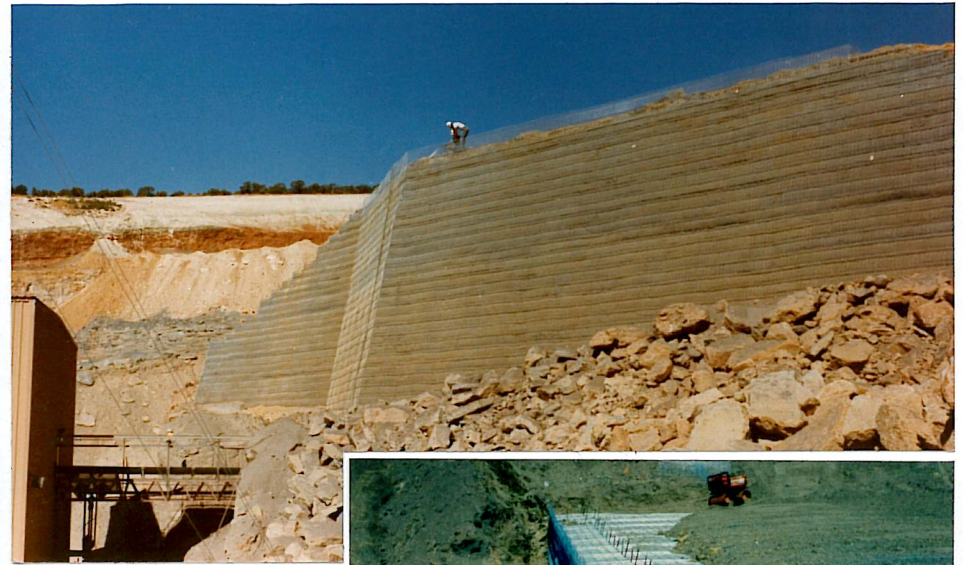


HUMBOLDT STATE STUDENT APARTMENTS

Welded Wire Retaining Wall

California State University, Arcata, California

Contractor: Jim Adams Construction Designed by: SHN & Associates
 Summer 1990 10,212 Sq. Ft.

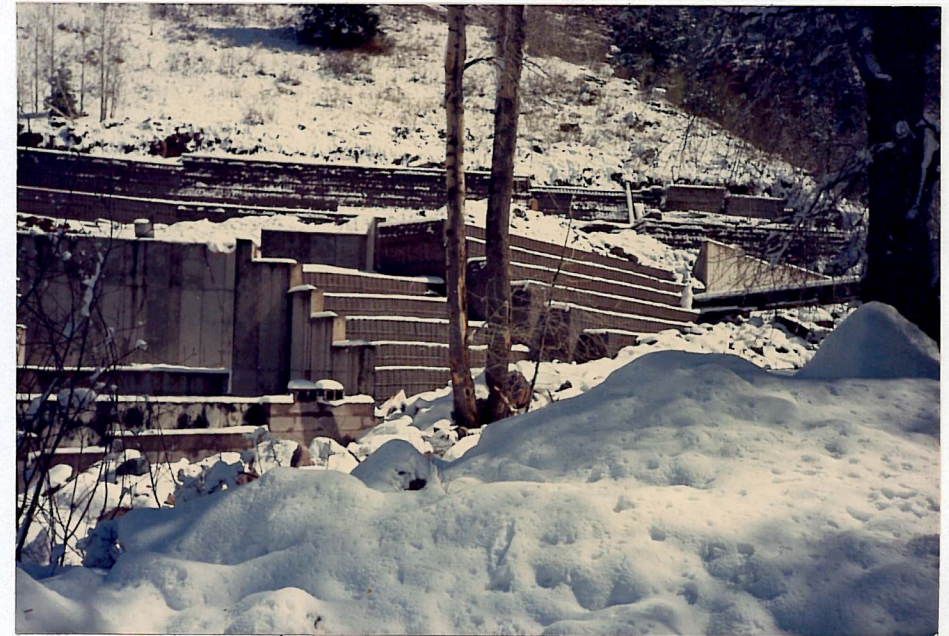


P.O. Box 2012 Eureka, CA - 95502-2012
Phone (707)443-5093 Fax (707)443-2891
Toll Free (800)762-8962 email info@hilfiker.com
web: <http://www.hilfiker.com>

HILFIKER RETAINING WALLS



VARIOUS PROJECTS & LOCATIONS
Welded Wire Retaining Walls, 18" lifts



Welded Wire Walls

Colorado - California - Nevada



HILFIKER RETAINING WALLS **HW**

P. O. Drawer 2012 • 3900 Broadway • Eureka, CA • (707) 443-5093 • CA Toll Free (800) 762-7967 • U.S. Toll Free (800) 762-8962

1990



RECONSTRUCTION OF STEAMBOAT

ROAD #138

**Welded Wire
Retaining Wall,
18" Lifts**

USFS/Umpqua
National Forest
Contractor: Huffman &
Wright Logging Co.
Designed by: USDA/FS
September 1988
3,876 Sq. Ft.

P.O. Box 2012 Eureka, CA - 95502-2012
Phone (707)443-5093 Fax (707)443-2891
Toll Free (800)762-8962 email info@hilfiker.com
web: <http://www.hilfiker.com>



HILFIKER RETAINING WALLS



RANCHO SANTA MARGARITA GOLF COURSE

Welded Wire Retaining Wall, 18" Lifts

Santa Margarita, California

Contractor: Santa Margarita Co. (Prime), Baker Construction (Sub)

Designed by: SHN & Associates

Winter 1988 - 1989 13,668 Sq. Ft Wall



P.O. Box 2012 Eureka, CA - 95502-2012
 Phone (707)443-5093 Fax (707)443-2891
 Toll Free (800)762-8962 email info@hilfiker.com
 web: <http://www.hilfiker.com>

HILFIKER RETAINING WALLS





DISCOVERY BAY RESTAURANT ACCESS ROAD

Welded Wire Retaining Wall, 18" Lifts

Discovery Bay, Washington

Contractor: S.B. Interprises

Designed by: SHN Consulting Engineers & Geologists

Summer 1992 HRW 920826-1 1,128 Sq. Ft.



SR 112/101 INTERCHANGE

Welded Wire Retaining Wall, 18" Lifts

Washington Department of Transportation

Contractor: Bruch & Bruch Construction, Inc.

Fall 1992 HRW 920000-W1 1,356 Sq. Ft.





Welded Wire Walls

Humboldt State University, Arcata, CA

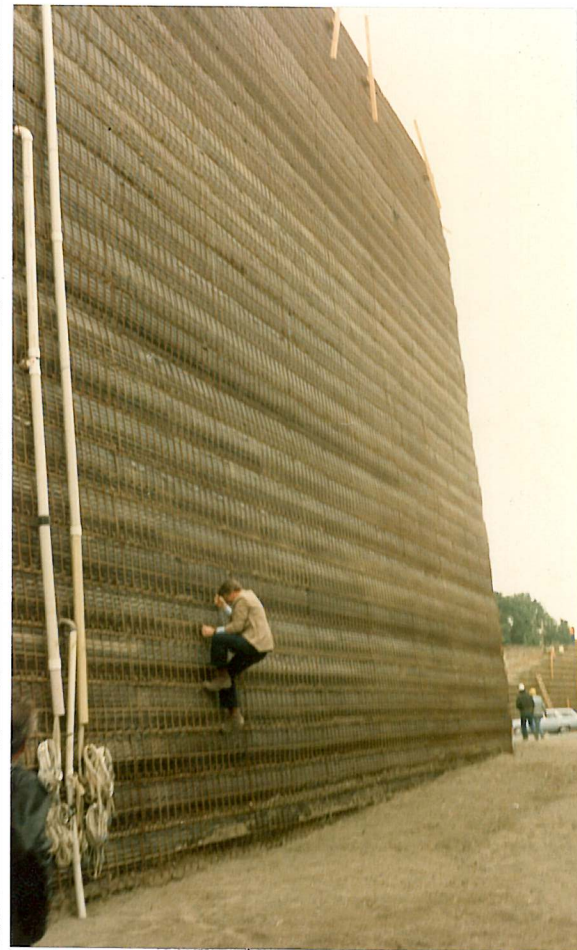
Palomares, CA

Loaded Truck - 6,000 FSF - Hilfiker Plant, Eureka, CA

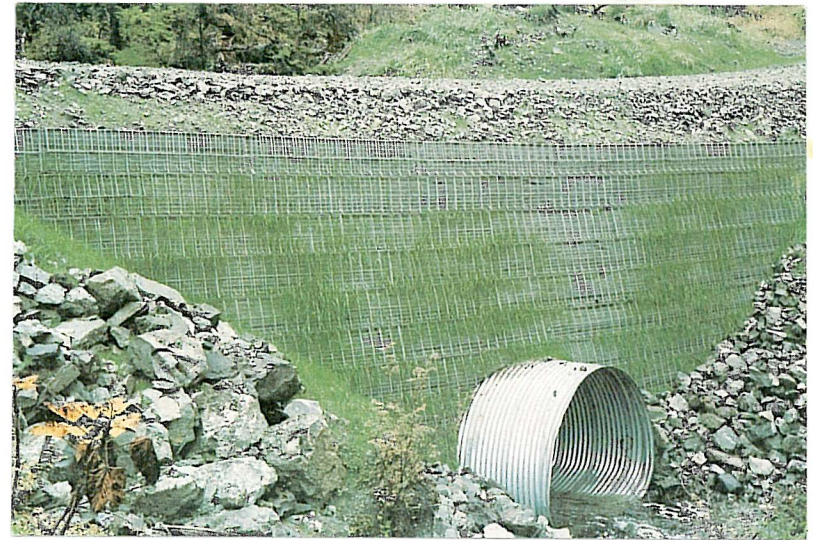


HILFIKER RETAINING WALLS **HW**

P. O. Drawer 2012 • 3900 Broadway • Eureka, CA • (707) 443-5093 • CA Toll Free (800) 762-7967 • U.S. Toll Free (800) 762-8962



← **SEATTLE
PRELOAD**

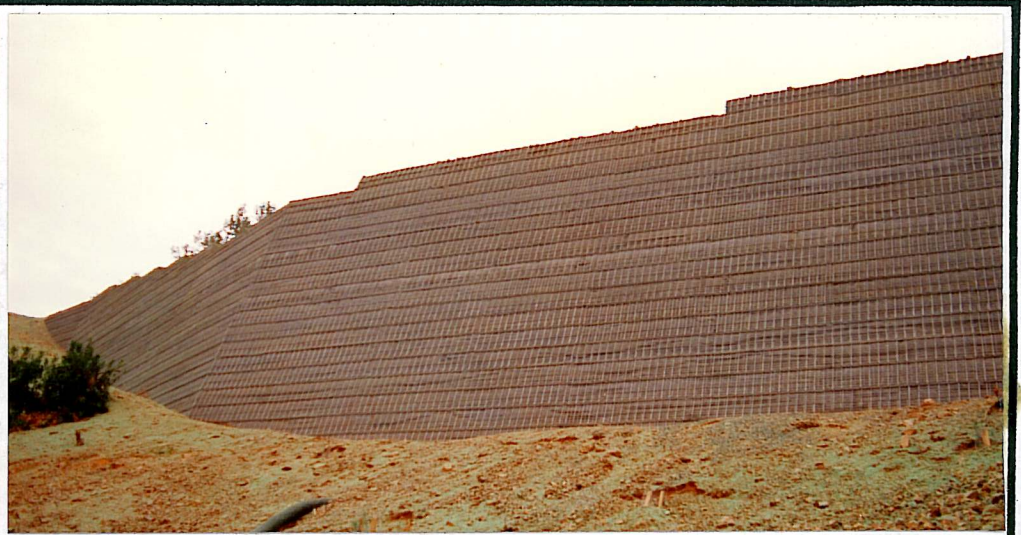


↑
**TONGASS NATIONAL
FOREST**
**Welded Wire Retaining Wall,
18" Lifts**
Tongass N.F., Alaska
U.S.D.A., F.S. (R10, Ketchikan)
Contractor: Ritchie Transportation



←
SEATTLE PRELOAD
**Welded Wire Retaining Wall,
18" Lifts**
Seattle, Washington
Washington Department of Transportation
Contractor: E.L. Grice and Sons





Welded Wire Walls

Resort at Squaw Creek (rd.widening)
Perini Corp./Helms Const.

Auburn/Forestville Hwy. (rd.widening)
Baldwin Contracting



HILFIKER RETAINING WALLS



P. O. Drawer 2012 • 3900 Broadway • Eureka, CA • (707) 443-5093 • CA Toll Free (800) 762-7967 • U.S. Toll Free (800) 762-8962



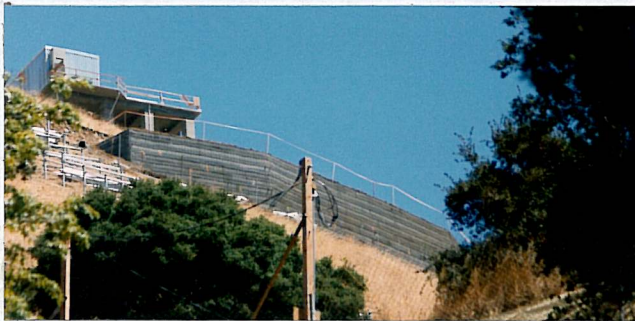
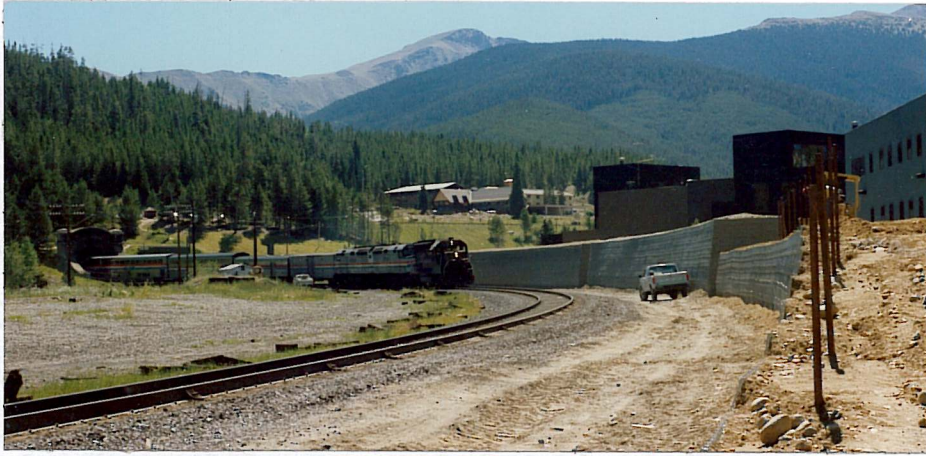
Various Welded Wire Wall in Washington, Utah, Arizona & Oregon



HILFIKER RETAINING WALLS



P. O. Drawer 2012 • 3900 Broadway • Eureka, CA • (707) 443-5093 • CA Toll Free (800) 762-7967 • U.S. Toll Free (800) 762-8962



Various Hilfiker Welded Wire Walls
in Colorado, Washington, and California



HILFIKER RETAINING WALLS



P. O. Drawer 2012 • 3900 Broadway • Eureka, CA • (707) 443-5093 • CA Toll Free (800) 762-7967 • U.S. Toll Free (800) 762-8962



Tieton Dam Spillway
Welded Wire Walls
constructed by North Central Construction



HILFIKER RETAINING WALLS



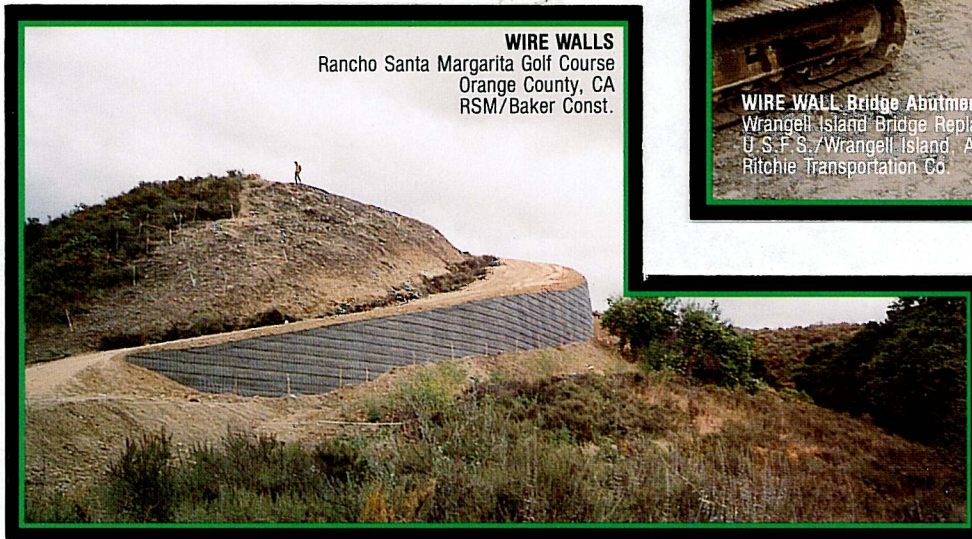
P. O. Drawer 2012 • 3900 Broadway • Eureka, CA • (707) 443-5093 • CA Toll Free (800) 762-7967 • U.S. Toll Free (800) 762-8962



WIRE WALL Bridge Abutment
 Wilson Creek/DNR-Washington
 Rogolin's, Inc.



WIRE WALL Bridge Abutments
 Wrangell Island Bridge Replacement #2
 U.S.F.S./Wrangell Island, Alaska
 Ritchie Transportation Co.



WIRE WALLS
 Rancho Santa Margarita Golf Course
 Orange County, CA
 RSM/Baker Const.



HILFIKER RETAINING WALLS



P.O. Drawer 2012 • 3900 Broadway • Eureka, CA 95501 • (707) 443-5093 • CA Toll Free (800) 762-7967 • U.S. Toll Free (800) 762-8962

YATUK CREEK BRIDGE REPLACEMENT

Welded Wire Retaining Wall
Thorne Bay Ranger District
Tongas National Forest

U.S. D.O.T. - Alaska Project No. 20-7488

Contractor: Pacific General



SHOTGUN CREEK BRIDGE ABUTMENT

Welded Wire Retaining Wall (2376 Sq. Ft.)

CALTRANS No. 02-230-404

Shasta County, California

Contractor: Stimpel-Wiebelhaus Inc.

Engineer: CALTRANS and MacIntosh Engineering
Spring 1990

WELDED WIRE RETAINING WALL

Bridge Abutments



HILFIKER RETAINING WALLS

P.O. Box 2012 - Eureka, CA - 95502-2012 - Ph. (707)443-5093 - Fax (707)443-2891 - Toll Free (800)762-8962





Sugar Loaf (Lakehead)
 Welded Wire Wall Bridge Abutments
 constructed by
Stimpel Wiebelhaus
 P.O. Box 4308
 Redding, CA 96099
 916/223-6605

CALTRANS
 Contract No. 02-041734
 02-SHA-5-T43.9/45.5



HILFIKER RETAINING WALLS **HW**

P.O. Drawer 2012 • 3900 Broadway • Eureka, CA • (707) 443-5093 • CA Toll Free (800) 762-7967 • U.S. Toll Free (800) 762-8962



U.S. 395/RENO (SO. VIRGINIA TO DEL MONTE)
Welded Wire Retaining Wall - Temporary Haul Bridge
 Nevada Department of Transportation
 Contractor: Helms Construction Designed by: Nevada DOT and SHN & Assoc.
 Summer 1988 14,136 Sq. Ft.

HW
 P.O. Box 2012 Eureka, CA - 95502-2012
 Phone (707)443-5093 Fax (707)443-2891
 Toll Free (800)762-8962 email info@hilfiker.com
 web: <http://www.hilfiker.com>
HILFIKER RETAINING WALLS
 SINCE 1902
 QUALITY PRODUCTS



↑ WWW - TELLURIDE, CO. Private Project. Contr.: Baker Const. & Final Touch Const.

↓ WWW -
FILLMORE, UT.
USDA-FS (R4
Fishlake). Contr.:
Baker Const.



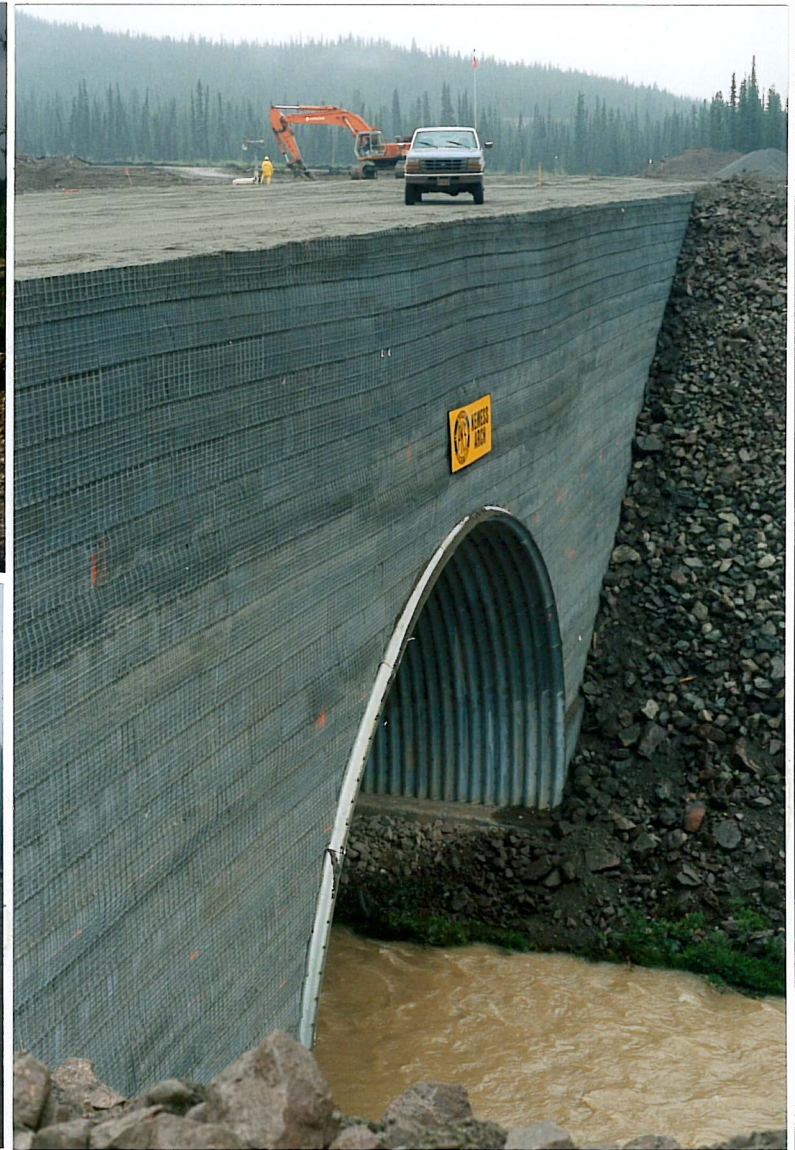
↓ WWW - GEYSERS, CA. Private Project. Contr.: Underground Const.



HILFIKER RETAINING WALLS



P.O. Drawer 2012 • 3900 Broadway • Eureka, CA 95501 • (707) 443-5093 • CA Toll Free (800) 762-7967 • U.S. Toll Free (800) 762-8962



KEMESS SOUTH TAILINGS & RECLAIM SYSTEM
"Largest Structural Plate Arch in the World" (66')
Welded Wire Retaining Wall

Northern British Columbia, Canada Owner: Royal Oak Mines, Inc.
 Arch Manufactured By: Atlantic Industries Ltd, Atlantic Industries SuperCor
 Wall Design: MacIntosh Engineering & Development Contractor: Peter Kiewit and Sons Ltd.
 July 1997 13,808 Sq. Ft.,



P.O. Box 2012 - Eureka, CA - 95502-2012
 Phone (707)443-5093
 Fax (707)443-2891 - Toll Free (800)762-8962

HILFIKER RETAINING WALLS





KEMESS/M.S.E ARCH WALLS

Welded Wire Retaining Walls

Between Prince George and Dease Lake, B.C., Canada

Owner: Royal Oak Mines, Inc. Owner's Rep: Bantrel Inc.

Designed by: MacIntosh Engineering and Development Co.

Arch Manufactured by: Atlantic Industries Ltd., SuperCor

Contractor: Peter Kiewit & Sons Ltd.

July 1997 Max. Wall Ht. 56 Ft. Arch Ht. 66 Ft. 21,072 Sq. Ft



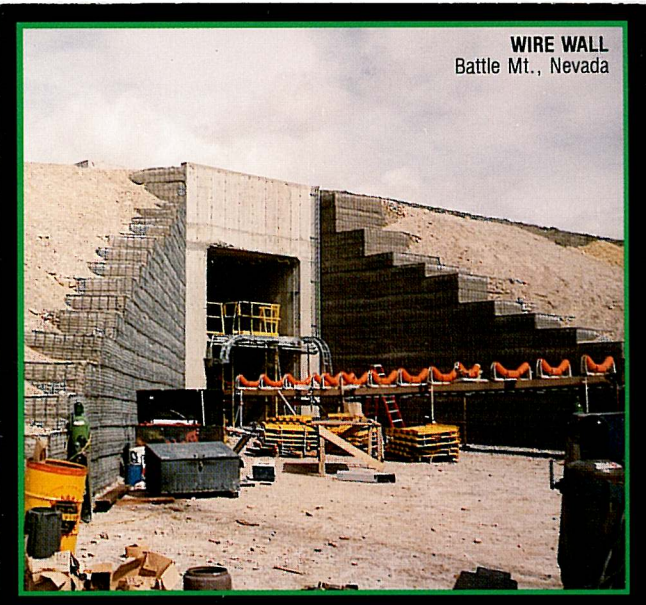
HILFIKER RETAINING WALLS

P.O. Box 2012 Eureka, CA - 95502-2012
 Phone (707)443-5093 Fax (707)443-2891
 Toll Free (800)762-8962 email info@hilfiker.com

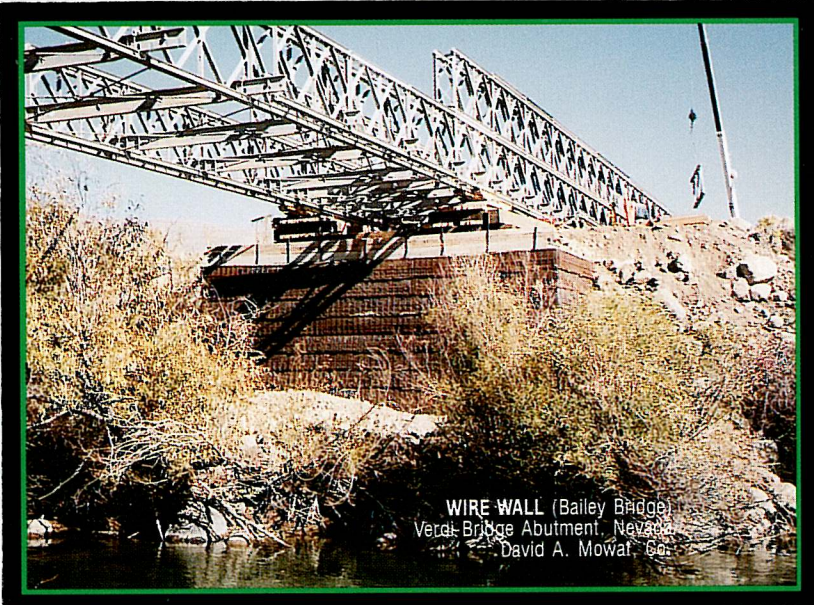




WIRE WALL
FHWA, Fremont River, Utah
Brown Bros. Const.



WIRE WALL
Battle Mt., Nevada



WIRE WALL (Bailey Bridge)
Verde Bridge Abutment, Nevada
David A. Mowat, Co.



HILFIKER RETAINING WALLS



P.O. Drawer 2012 • 3900 Broadway • Eureka, CA 95501 • (707) 443-5093 • CA Toll Free (800) 762-7967 • U.S. Toll Free (800) 762-8962



WHITE PINE CANYON

Welded Wire M.S.E. (True) Bridge Abutments

Park City West, Summit County, Utah

Owner: White Pine Development Contractor: Frehner Construction

Designed by: Geotechnical Design Services

January-December 1999 Approximately 180,000 Sq. Ft Total Project

P.O. Box 2012 Eureka, CA - 95502-2012

Phone (707)443-5093 Fax (707)443-2891 Toll Free (800)762-8962

email info@hilfiker.com web: <http://www.hilfiker.com>

HILFIKER RETAINING WALLS





WHITE PINE CANYON

Welded Wire M.S.E. (True) Bridge Abutments

Park City West, Summit County, Utah

Owner: White Pine Development Contractor: Frehner Construction

Designed by: Geotechnical Design Services

January-December 1999 Approximately 180,000 Sq. Ft Total Project

P.O. Box 2012 Eureka, CA - 95502-2012

Phone (707)443-5093 Fax (707)443-2891 Toll Free (800)762-8962

email info@hilfiker.com web: <http://www.hilfiker.com>

HILFIKER RETAINING WALLS





DEER CREST DEVELOPMENT PROJECT

Welded Wire M.S.E. (True) Bridge Abutments

Park City/Deer Valley, Wasatch, Utah

Owner: Deer Crest Associates I.L.C. Designed by: Geotechnical Design Services

Contractor: Granite Construction Sub: EarthTech West Ltd.

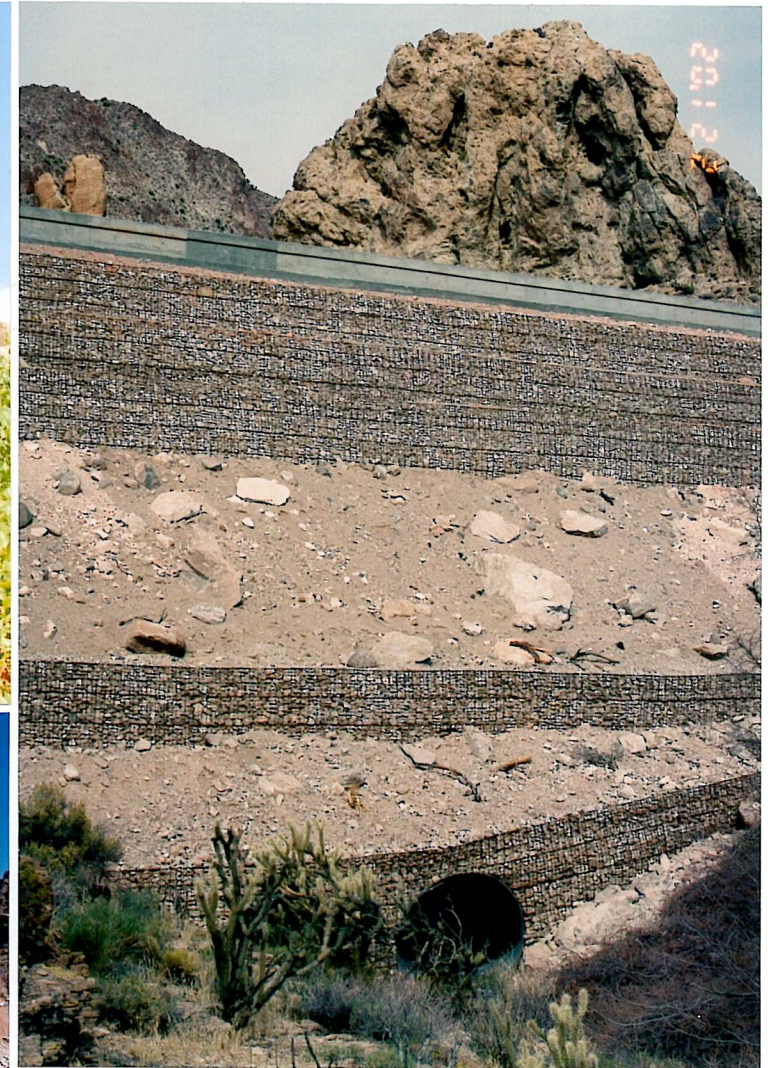
1999 Approximately 200,000 Sq. Ft. Total Project



P.O. Box 2012 Eureka, CA - 95502-2012
 Phone (707)443-5093 Fax (707)443-2891 Toll Free (800)762-8962
 email info@hilfiker.com web: <http://www.hilfiker.com>

HILFIKER RETAINING WALLS





STATE ROUTE 68, DAVIS DAM-KINGMAN HWY

Welded Wire Retaining Wall

Bullhead City, Arizona

Owner: Arizona D.O.T. Contractor: Kiewit Western Co.

Designed by: ADOT and MacIntosh Engineering

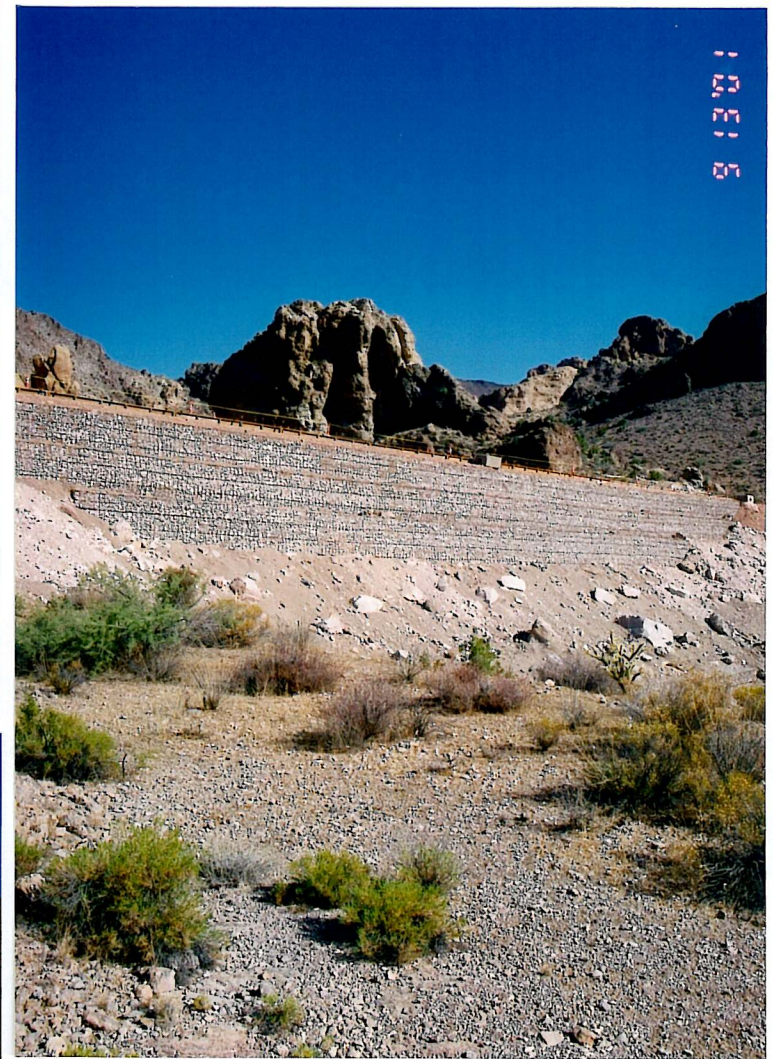
June 2001 5,784 Sq. Ft. Wall Face (Permanent)



P.O. Box 2012 Eureka, CA - 95502-2012
 Phone (707)443-5093 Fax (707)443-2891
 Toll Free (800)762-8962 email info@hilfiker.com
 web: <http://www.hilfiker.com>

HILFIKER RETAINING WALLS





STATE ROUTE 68, DAVIS DAM-KINGMAN HWY

Welded Wire Retaining Wall

Bullhead City, Arizona

Owner: Arizona D.O.T. Contractor: Kiewit Western Co.

Designed by: ADOT and MacIntosh Engineering

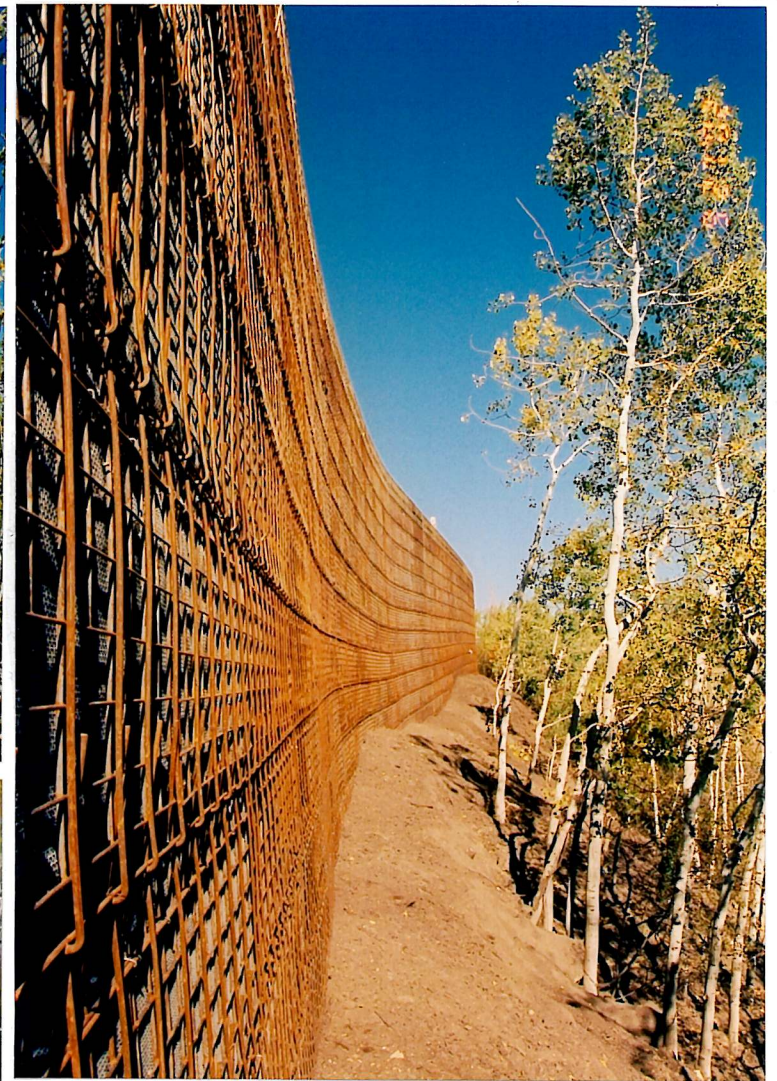
June 2001 5,784 Sq. Ft. Wall Face (Permanent)



P.O. Box 2012 Eureka, CA - 95502-2012
 Phone (707)443-5093 Fax (707)443-2891
 Toll Free (800)762-8962 email info@hilfiker.com
 web: <http://www.hilfiker.com>

HILFIKER RETAINING WALLS





LDS CHURCH FAMILY/YOUTH CAMP

Welded Wire Retaining Wall - Black Wire

Heber City, Utah

Owner: LDS Church Builder: W.W. Clyde and Co.

Designed by: Geotechnical Design Services

Summer-Fall 2002 77,524 Sq. Ft

P.O. Box 2012 Eureka, CA - 95602-2012

Phone (707)443-5093 Fax (707)443-2891

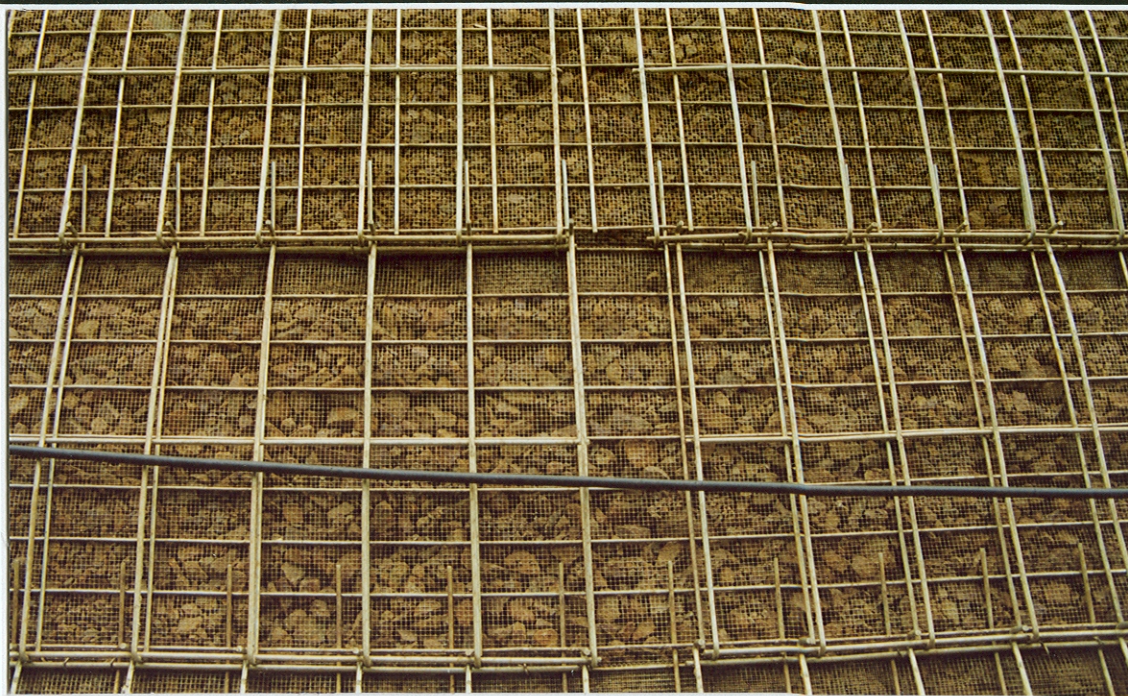
Toll Free (800)762-8962 email info@hilfiker.com

web: <http://www.hilfiker.com>



HILFIKER RETAINING WALLS





CONEJOS - SOUTH FORK

Welded Wire Retaining Walls with Eonite Facing

Rio Grande National Forest, near Durango, Colorado

FHWA, Central Federal Lands Hwy Division

Wall Design: FHWA and MacIntosh Engineering & Development

Contractor: Stimpel-Wiebelhaus Associates

October 1995 68,680 Sq. Ft.



HILFIKER RETAINING WALLS

P.O. Box 2012 - Eureka, CA - 95502-2012

Phone (707)443-5093

Fax (707)443-2891 - Toll Free (800)762-8962

SINCE 1902
QUALITY PRODUCTS



ANTELOPE MINE EXPANSION

WELDED WIRE WALL - 24" Lifts

Gillette, Campbell County, Wyoming

Owner: Antelope Coal Co.

Engineer: MacIntosh Eng'r & Development Co.

Contractor: Prime: Sandwell, Inc. Sub: Ames Construction
17,348 Sq. Ft. 76' Maximum Wall Height Summer 1997

HILFKER RETAINING WALLS



P.O. Box 2012 - Eureka, CA - 95502-2012
Ph. (707)443-5093
Fax (707)443-2891 - Toll Free (800)762-8962

