

Mar 1999 890720-1



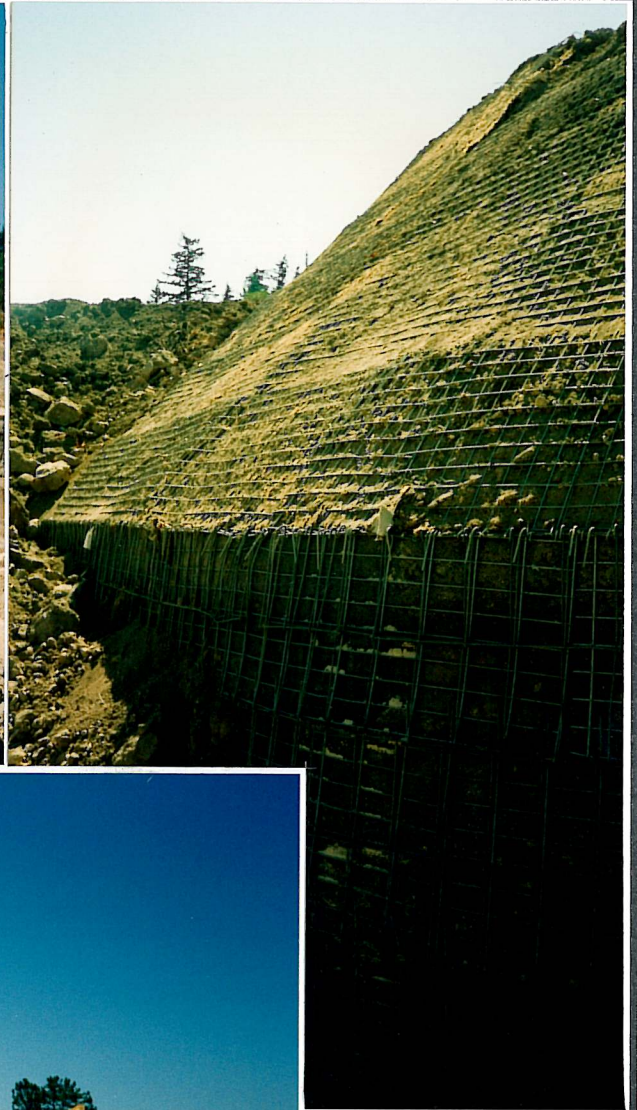
P.O. Box 2012 - Eureka, CA - 95502-2012  
Phone (707)443-5093  
Fax (707)443-2891 - Toll Free (800)762-8962

**HILFIKER RETAINING WALLS**



**CODORNIU WINE FACILITY**  
**Hilfiker Steepened Slope Retaining Wall**

Codorniu Winery, Napa Valley, California  
Contractor: Heide & Williams  
1989 58,076 Sq. Ft.



**OAK KNOLL SUBDIVISION**  
**Welded Wire** (2272 Sq. Ft.) **and Steepened Slope** (3668 Sq. Ft.)  
**Scotts Valley, Santa Cruz County, CA**

Contractor, Blair Foster Construction  
Engineer: Ifland Engineers  
September 1994



**HILFIKER RETAINING WALLS**



P.O. Box 2012 - Eureka, CA - 95502-2012 - Ph. (707)443-5093 - Fax (707)443-2891 - Toll Free (800)762-8962



**OAK KNOLL SUBDIVISION**  
**Welded Wire (2272 Sq. Ft.) and Steepened Slope (3668 Sq. Ft.)**  
**Scotts Valley, Santa Cruz County, CA**

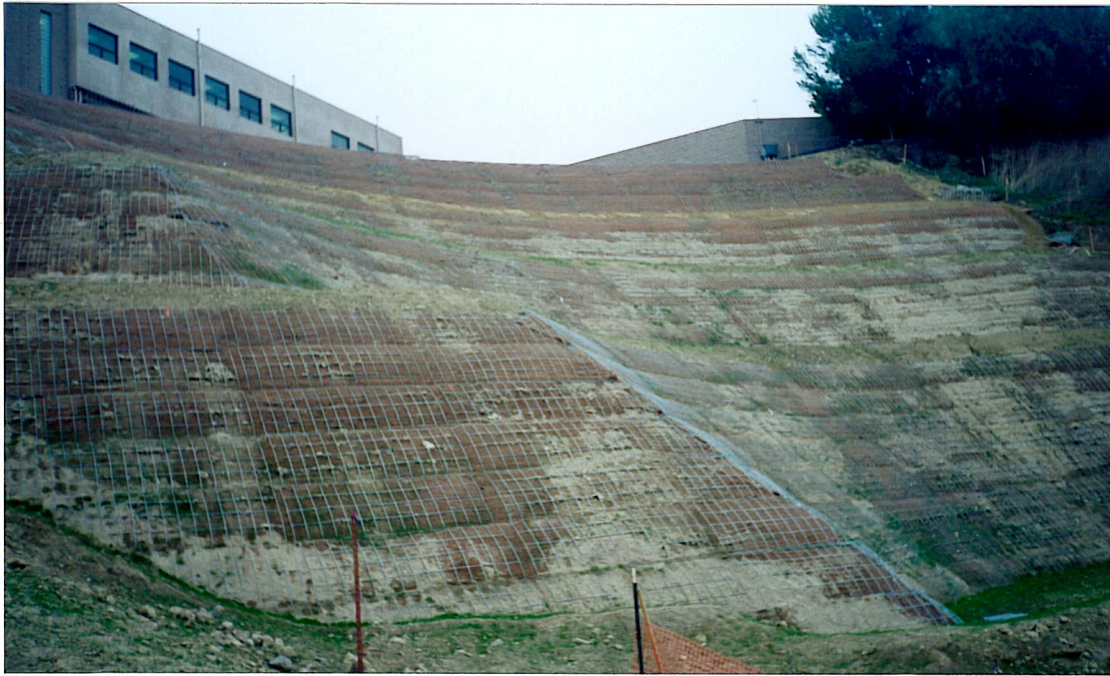
Contractor: Blair Foster Construction  
Engineer: Ifland Engineers



**HILFIKER RETAINING WALLS**



P.O. Box 2012 - Eureka, CA - 95502-2012 - Ph. (707)443-5093 - Fax (707)443-2891 - Toll Free (800)762-8962



**PUENTE HILLS LANDFILL REPAIR - PERG SLOPE**

**Welded Wire Steepened Slope**

Puente Hills, Los Angeles County, California

Owner: Los Angeles County Sanitation District

Wall Design: MacIntosh Engineering and Development Co.

Contractor: Harvest Construction November 1996

12,528 Sq. Ft. (Not shown: 3,072 Sq. Ft. Welded Wire Wall)

P.O. Box 2012 - Eureka, CA - 95502-2012

Phone (707)443-5093

Fax (707)443-2891 - Toll Free (800)762-8962



**HILFIKER RETAINING WALLS**





**PUEENTE HILLS LANDFILL REPAIR - PERG SLOPE**

**Welded Wire Steepened Slope**

Puente Hills, Los Angeles County, California  
 Owner: Los Angeles County Sanitation District  
 Wall Design: MacIntosh Engineering and Development Co.  
 Contractor: Harvest Construction November 1996  
 12,528 Sq. Ft. (Not shown: 3,072 Sq. Ft. Welded Wire Wall)



**HILFIKER RETAINING WALLS**

P.O. Box 2012 - Eureka, CA - 95502-2012  
 Phone (707)443-5093

Fax (707)443-2891 - Toll Free (800)762-8962





Mar 1999 920903-1



P.O. Box 2012 - Eureka, CA - 95502-2012  
Phone (707)443-5093  
Fax (707)443-2891 - Toll Free (800)762-8962

**HILFIKER RETAINING WALLS**



## STEEPENED SLOPE WELDED WIRE WALL

**Private Residence**

Hiouchi, Del Norte County, California

Contractor: Jim Schlotter Backhoe and Dump Truck

Fall 1992

1033 Sq. Ft.

Sheet 1 of 2



## STEEPENED SLOPE WELDED WIRE WALL

**Private Residence**

Hiouchi, Del Norte County, California

Contractor: Jim Schlotter Backhoe and Dump Truck

Fall 1992 1033 Sq. Ft.

Sheet 2 of 2



P.O. Box 2012 - Eureka, CA - 95502-2012  
Phone (707)443-5093

Fax (707)443-2891 - Toll Free (800)762-8962

**HILFIKER RETAINING WALLS**

