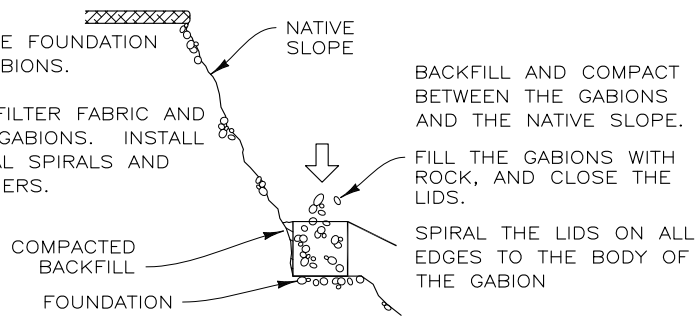
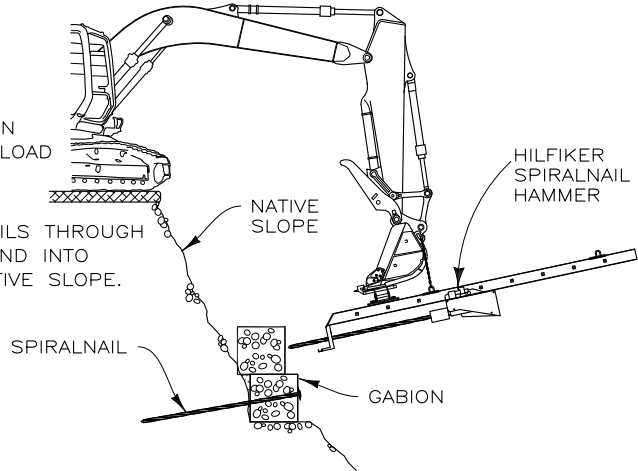


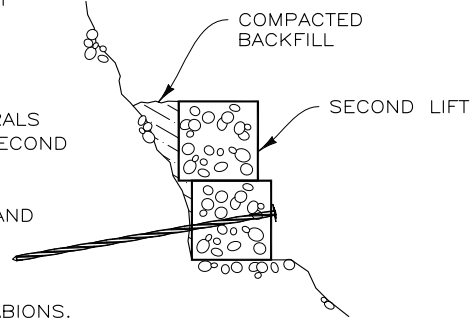
STEP 1
PREPARE THE FOUNDATION FOR THE GABIONS.
BEGIN THE FILTER FABRIC AND PLACE THE GABIONS. INSTALL THE VERTICAL SPIRALS AND THE STIFFENERS.



STEP 2
SLIDE FLANGE ON TO SPIRALNAIL. LOAD SPIRALNAIL INTO THE HAMMER.
DRIVE SPIRALNAILS THROUGH THE GABIONS AND INTO COMPETENT NATIVE SLOPE.

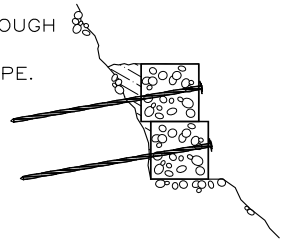


STEP 3
PLACE THE SECOND LIFT OF GABIONS AND SPIRAL THEM PERMANENTLY TO THE LIFT BELOW.
INSTALL THE VERTICAL SPIRALS AND STIFFENERS IN THE SECOND LIFT.
PLACE THE ROCK, CLOSE AND SECURE THE LIDS.
BACKFILL AND COMPACT CAREFULLY BEHIND THE GABIONS.

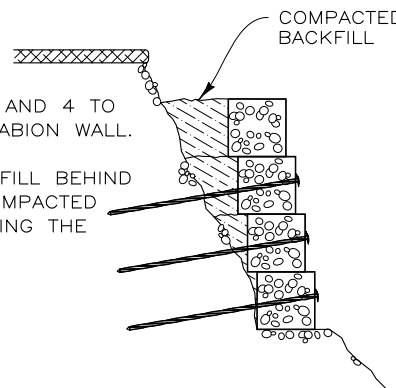


CONSTRUCTION SEQUENCE
NOT TO SCALE

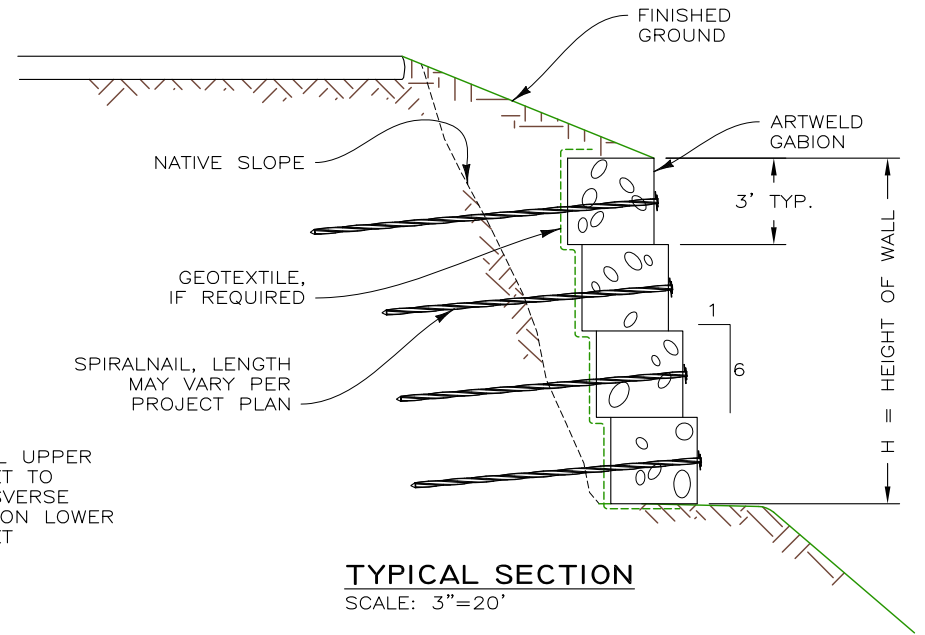
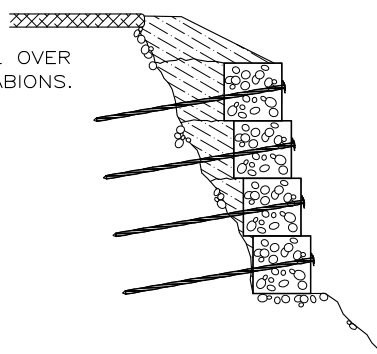
STEP 4
AS IN STEP 2, SLIDE FLANGE ON TO SPIRALNAIL. LOAD SPIRALNAIL INTO THE HAMMER.
DRIVE SPIRALNAILS THROUGH THE GABIONS AND INTO COMPETENT NATIVE SLOPE.



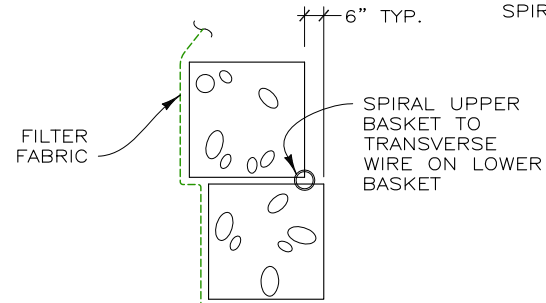
STEP 5
CONTINUE STEPS 3 AND 4 TO THE TOP OF THE GABION WALL.
BE SURE THE BACKFILL BEHIND THE GABIONS IS COMPACTED FULLY BEFORE DRIVING THE SPIRALNAILS.



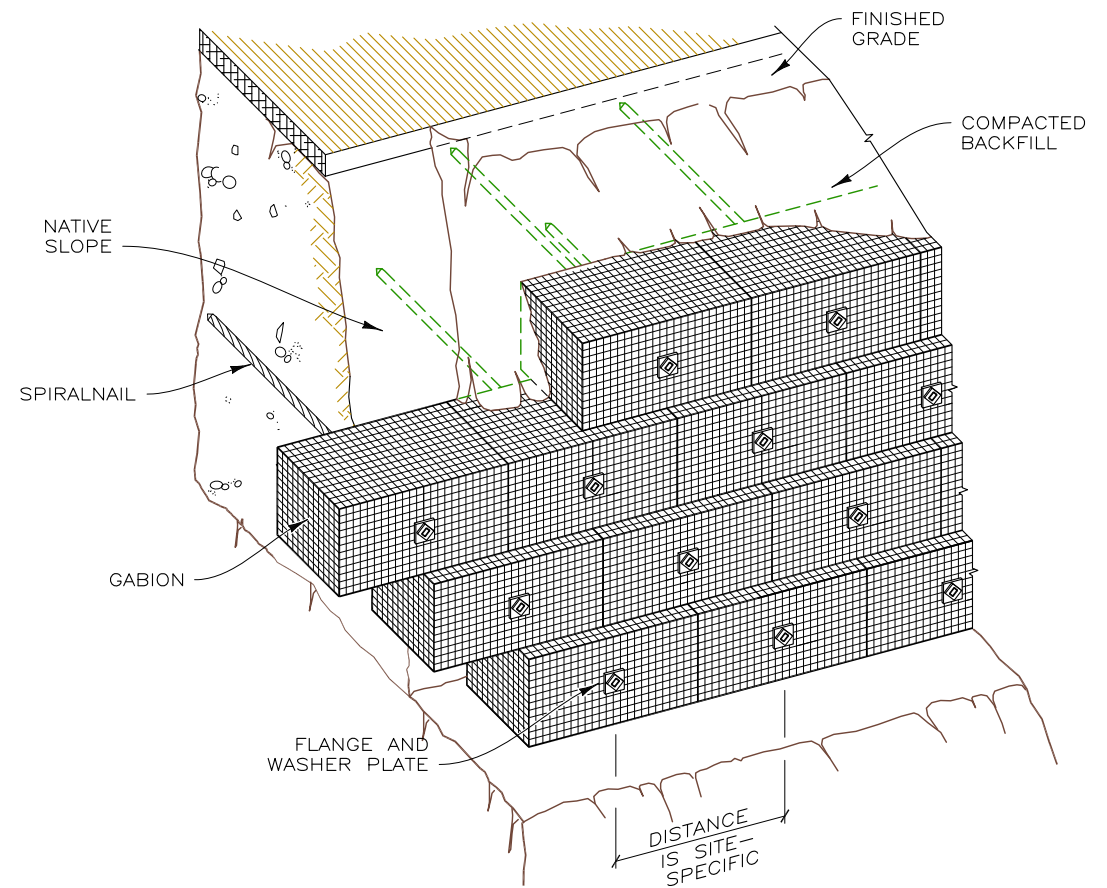
STEP 6
FINISH THE BACKFILL OVER THE TOP OF THE GABIONS.



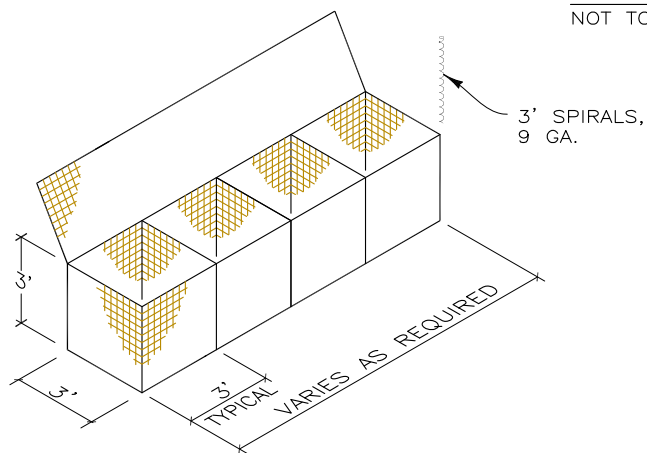
TYPICAL SECTION
SCALE: 3"=20'



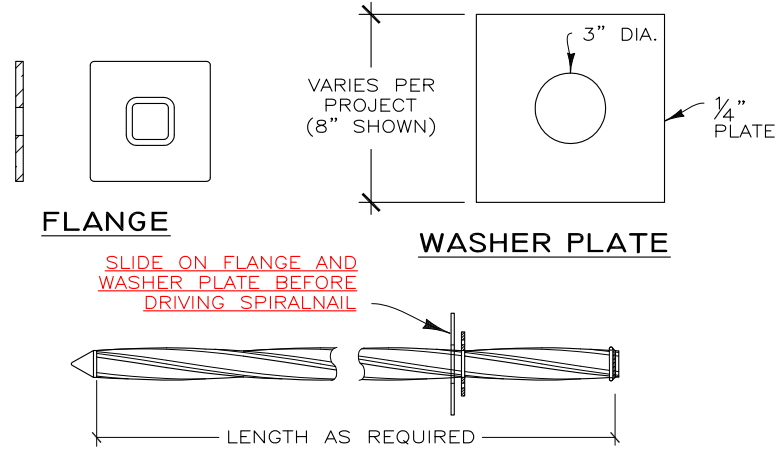
CONNECTION DETAIL



PICTORIAL ELEVATION - SPIRALNAIL THROUGH GABION
NOT TO SCALE

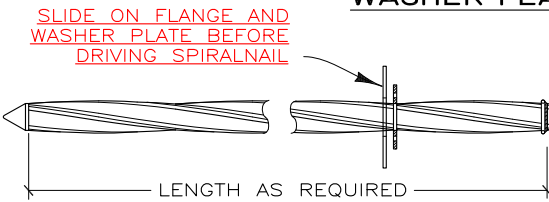


TYPICAL GABION



FLANGE

WASHER PLATE

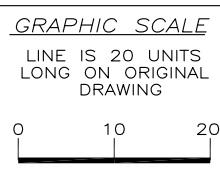


SPIRALNAIL
NOT TO SCALE

STANDARD DETAILS/SPIRALNAIL/SPIRALNAIL THROUGH GABION

THIS DRAWING IS FURNISHED SOLELY FOR THE USE OF OR IN CONNECTION WITH THIS PROJECT AND THE PROPRIETARY INFORMATION SHOWN HEREON IS NOT TO BE TRANSMITTED TO ANY OTHER ORGANIZATION WITHOUT SPECIFIC AUTHORIZATION BY THE HILFIKER COMPANY. HILFIKER RETAINING WALLS ARE PROTECTED BY ONE OR MORE OF THE FOLLOWING PATENTS: 243,613; 243,697; 288,616; 4,117,686; 4,329,089; 4,324,506; 4,391,557; 4,505,821; 4,343,318; 4,661,023; 4,856,939; 4,929,125; 5,076,735; 5,647,695; 5,722,799; 5,733,072; 6,357,970B1; 6,874,975B2; 7,033,118B2; AND OTHERS. OTHER PATENTS PENDING (2008)

REV.NO.	DATE	BY	DESCRIPTION
1	31 JAN 07	AMJ	UPDATED BORDER
2	23 JAN 15	AMJ	REVISED SPIRALNAIL TIP, MINOR CHANGES
3	13 FEB 18	DH	REVISED WASHER PLATE SIZE



PROJ.MGR.
ENGINEER
CADD BY
HRW

HILFIKER RETAINING WALLS

1902 Hilfiker Lane
Eureka, CA 95503-5711
TOLL-FREE 800.762.8962
PH 707.443.5093 FAX 707.443.2891
WEB SITE www.hilfiker.com E-MAIL info@hilfiker.com

DWG DATE
8 APR 93
REVISION DATE
13 FEB 18
SCALE
NOTED

STANDARD DRAWING
ARTWELD GABION M.S.E. WALL WITH HILFIKER SPIRALNAILS
DETAILS

PROJECT NO.
SHEET
1
OF 1