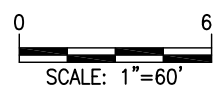
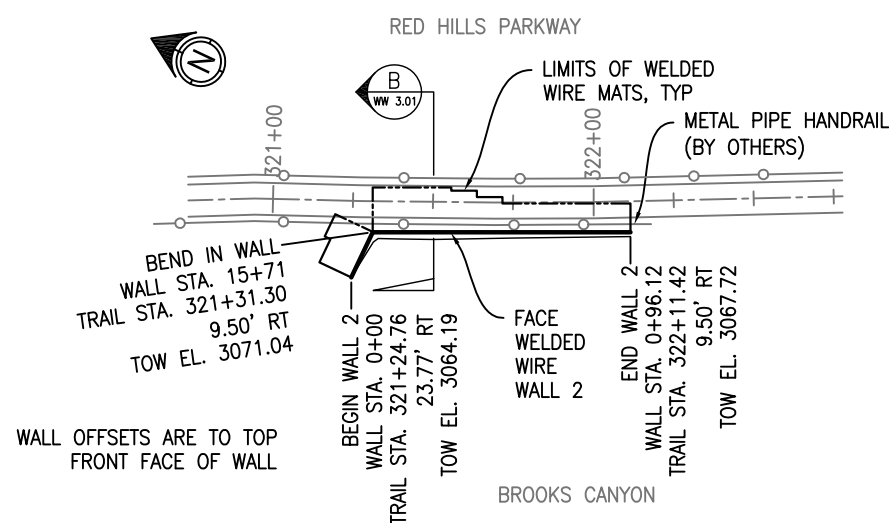


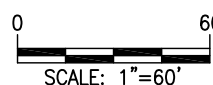
PLAN VIEW
WALL 1



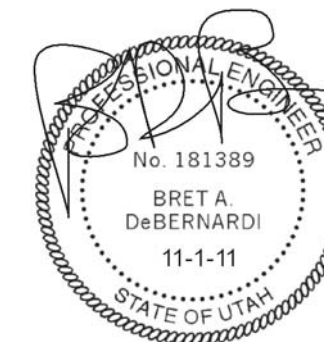
| SHEET INDEX | |
|-------------|----------------------------------|
| WW 1.01 | PLAN VIEW - WALLS 1 & 2 |
| WW 2.01 | ELEVATION VIEW - WALL 1 |
| WW 2.02 | ELEVATION VIEW - WALL 1 (CONT'D) |
| WW 2.03 | ELEVATION VIEW - WALL 1 (CONT'D) |
| WW 2.04 | ELEVATION VIEW - WALL 1 (CONT'D) |
| WW 2.05 | ELEVATION VIEW - WALL 1 (CONT'D) |
| WW 2.06 | ELEVATION VIEW - WALL 1 (CONT'D) |
| WW 2.07 | ELEVATION VIEW - WALL 2 |
| WW 3.01 | CROSS-SECTIONS A & B |
| WW 4.01 | CONSTRUCTION DETAILS |
| WW 4.02 | CONSTRUCTION DETAILS |
| WW 4.03 | GENERAL NOTES |



PLAN VIEW
WALL 2



REFERENCES:
PLANS & ELEVATIONS: UTAH DEPARTMENT OF TRANSPORTATION, RED HILLS PARKWAY, PROJ. NO. F-3190(11)0, DRG. NO. R-683A, SHEETS 2 & 3 OF 3



HRW Job No. 110811AW



HILFIKER RETAINING WALLS
8 Eureka, CA Phone 707/443-5093 Fax 707/443-2891

DESIGNED BY: **BD**
DRAWN BY: **LAJ**
CHKD. BY: **BD**
APPR. BY: **JB**

DATE: **Oct 12, 2011**
CURRENT DATE: **Nov 01, 2011**

DESIGNED BY: **BD**
DRAWN BY: **LAJ**
CHKD. BY: **BD**
APPR. BY: **JB**

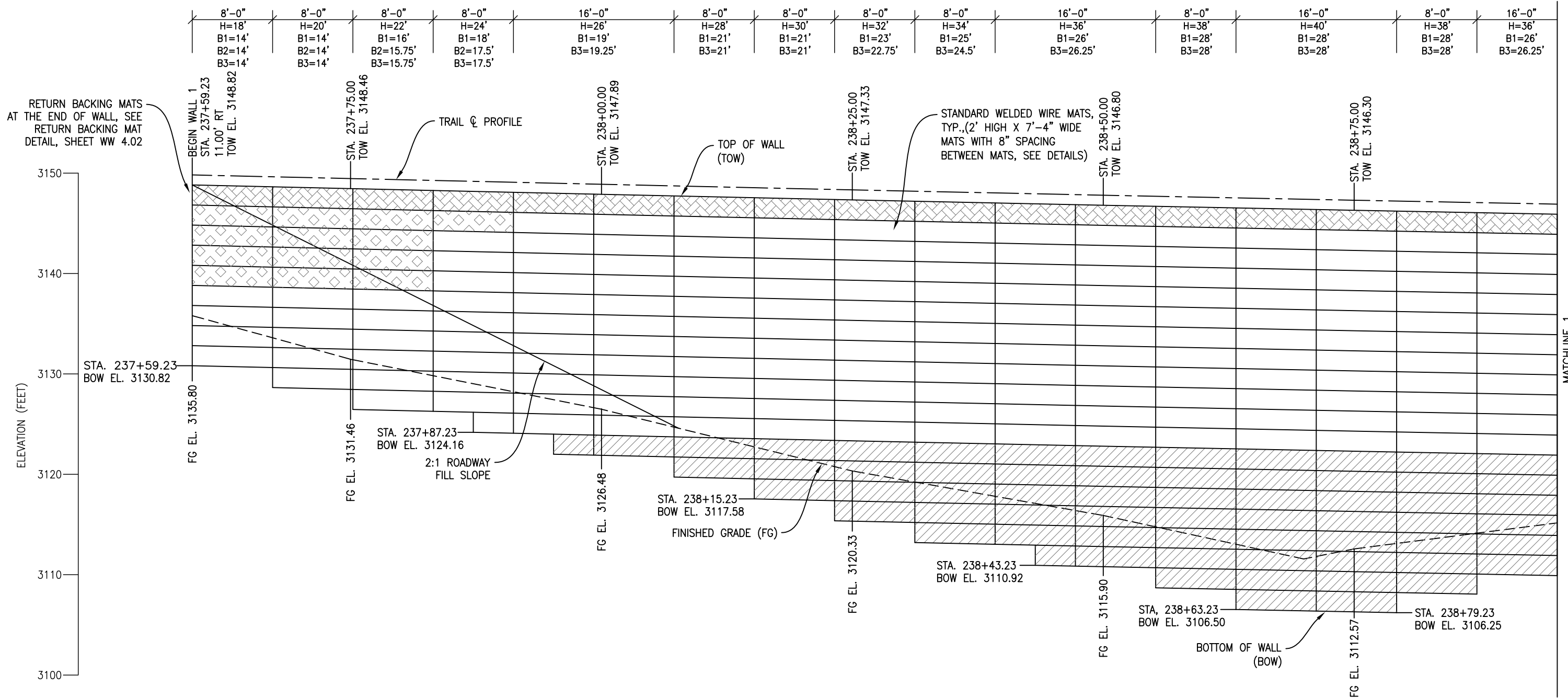
| REV. NO. | DATE | BY | DESCRIPTION |
|----------|----------|----|---|
| 1 | 11.01.11 | BD | Update mat sizes for available material |

THIS DRAWING IS FURNISHED SOLELY FOR THE USE OF OR IN CONNECTION WITH THIS PROJECT, AND THE PROPRIETARY INFORMATION SHOWN HEREON IS NOT TO BE TRANSMITTED TO ANY OTHER ORGANIZATION WITHOUT SPECIFIC AUTHORIZATION BY THE HILFIKER COMPANY. HILFIKER RETAINING WALLS ARE PROTECTED BY ONE OR MORE OF THE FOLLOWING PATENTS: 243,613; 243,897; 288,816; 411,788; 4,320,089; 4,324,508; 4,391,557; 4,505,621; 4,614,518; 4,661,023; 4,656,939; 5,076,735; 5,647,695; 5,722,799; 6,387,070 AND OTHERS. OTHER PATENTS PENDING (2004)

PLAN VIEW - WALLS 1 & 2
Welded Wire Retaining Walls
Red Hills Parkway - Bluff Street to Industrial Road
St. George, Utah

PROJECT NO:
11-03-42

SHEET NO:
WW 1.01



RETURN BACKING MATS AT THE END OF WALL, SEE RETURN BACKING MAT DETAIL, SHEET WW 4.02

STANDARD WELDED WIRE MATS, TYP., (2' HIGH X 7'-4" WIDE MATS WITH 8" SPACING BETWEEN MATS, SEE DETAILS)

TRAIL C PROFILE

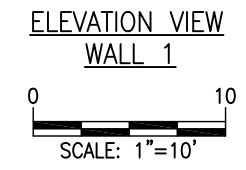
TOP OF WALL (TOW)

2:1 ROADWAY FILL SLOPE

FINISHED GRADE (FG)

BOTTOM OF WALL (BOW)

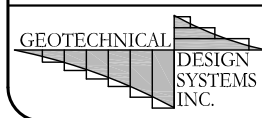
| | | | |
|----------|--|--|--|
| H | TOTAL HEIGHT OF WALL AT EACH SEGMENT | | W7.0 X 4.0 (8"X21" WIRE SPACING) STANDARD MATS. SEE B3 FOR MAT LENGTH |
| B1 | BASE LENGTH WIRE MATS, CAP AND PRONGLESS MAT & INTERMEDIATE MATS | | W9.5 X 4.0 (8"X21" WIRE SPACING) STANDARD MATS. SEE B3 FOR MAT LENGTH |
| B2 TO B3 | BASE LENGTH WIRE MATS, STANDARD REINFORCING MATS | | W7.0 X 4.0 (8"X21" WIRE SPACING) FLAT INTERMEDIATE MATS. SEE B3 FOR MAT LENGTH |
| | W7.0 X 3.5 (8"X12" WIRE SPACING) CAP MAT AND PRONGLESS MATS. SEE B1 FOR MAT LENGTH | | |
| | W7.0 X 3.5 (8"X10.5" WIRE SPACING) STANDARD MATS. SEE B2 FOR MAT LENGTH | | |



WALL 1: APPROXIMATELY 24,197 SQUARE FEET OF WELDED WIRE WALL INSTALLED, SUPPLIED QUANTITIES MAY VARY



REFERENCES:
PLANS & ELEVATIONS: UTAH DEPARTMENT OF TRANSPORTATION, RED HILLS PARKWAY, PROJ. NO. F-3190(11)0, DRG. NO. R-683A, SHEETS 2 & 3 OF 3



HILFIKER RETAINING WALLS
Eureka, CA Phone 707/443-5093 Fax 707/443-2891

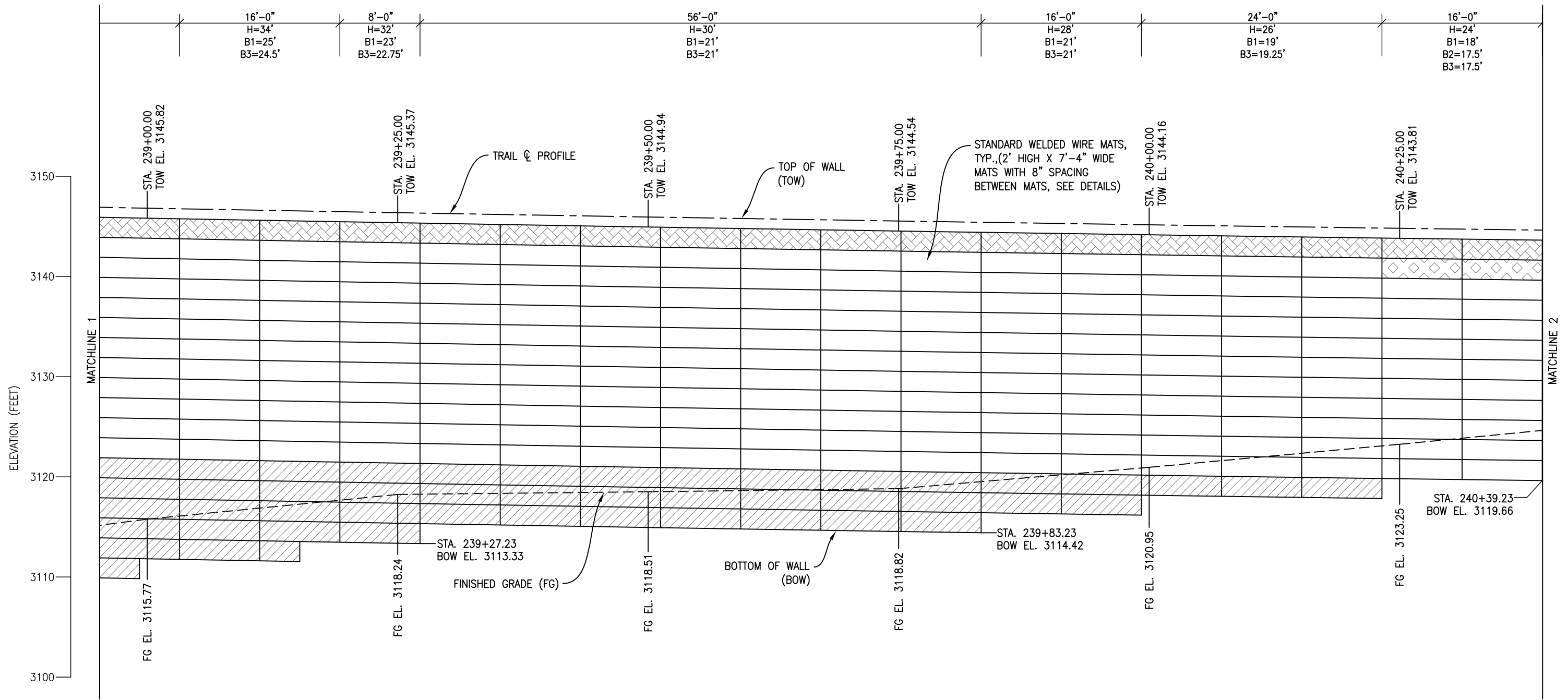
| | | | | | |
|----------------------|-----------------------------------|-------------------|----------------------|--------------|--|
| DESIGN BY: BD | DATE: Oct 12, 2011 | REV. NO. 1 | DATE 11.01.11 | BY BD | DESCRIPTION Update mat sizes for available material |
| DRAWN BY: LAJ | CURRENT DATE: Nov 01, 2011 | | | | |
| CHKD. BY: BD | | | | | |
| APPR. BY: JB | | | | | |

THIS DRAWING IS FURNISHED SOLELY FOR THE USE OF OR IN CONNECTION WITH THIS PROJECT, AND THE PROPRIETARY INFORMATION SHOWN HEREON IS NOT TO BE TRANSMITTED TO ANY OTHER ORGANIZATION WITHOUT SPECIFIC AUTHORIZATION BY THE HILFIKER COMPANY. HILFIKER RETAINING WALLS ARE PROTECTED BY ONE OR MORE OF THE FOLLOWING PATENTS: 2,433,613; 2,433,991; 2,884,816; 4,117,686; 4,329,089; 4,324,508; 4,391,557; 4,505,621; 4,643,018; 4,661,023; 4,856,930; 5,076,335; 5,647,685; 5,722,789; 6,357,070 AND OTHERS. OTHER PATENTS PENDING (2/00/4)

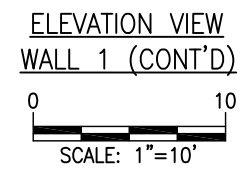
ELEVATION VIEW - WALL 1
Welded Wire Retaining Walls
Red Hills Parkway - Bluff Street to Industrial Road
St. George, Utah

HRW Job No. 110811AW

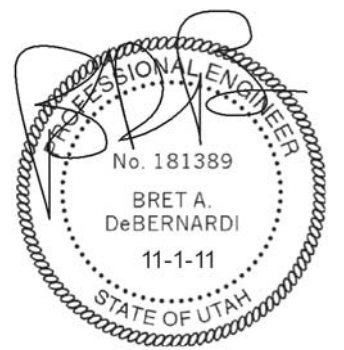
| | |
|-------------|----------|
| PROJECT NO: | 11-03-42 |
| SHEET NO: | WW 2.01 |



| | | | |
|----------|--|--|--|
| H | TOTAL HEIGHT OF WALL AT EACH SEGMENT | | W7.0 X 4.0 (8"X21" WIRE SPACING) STANDARD MATS. SEE B3 FOR MAT LENGTH |
| B1 | BASE LENGTH WIRE MATS, CAP AND PRONGLESS MAT & INTERMEDIATE MATS | | W9.5 X 4.0 (8"X21" WIRE SPACING) STANDARD MATS. SEE B3 FOR MAT LENGTH |
| B2 TO B3 | BASE LENGTH WIRE MATS, STANDARD REINFORCING MATS | | W7.0 X 4.0 (8"X21" WIRE SPACING) FLAT INTERMEDIATE MATS. SEE B3 FOR MAT LENGTH |
| | W7.0 X 3.5 (8"X12" WIRE SPACING) CAP MAT AND PRONGLESS MATS. SEE B1 FOR MAT LENGTH | | |
| | W7.0 X 3.5 (8"X10.5" WIRE SPACING) STANDARD MATS. SEE B2 FOR MAT LENGTH | | |



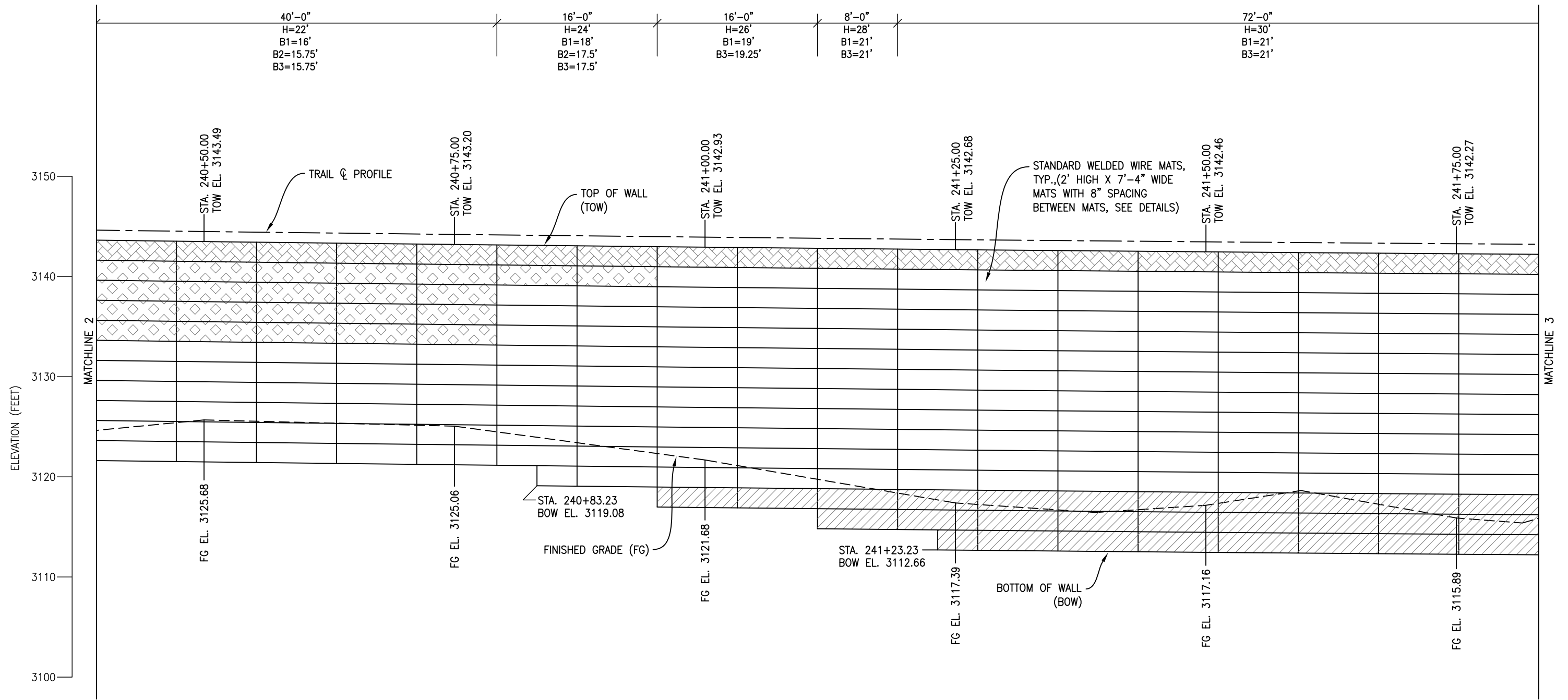
WALL 1: APPROXIMATELY 24,197 SQUARE FACE FEET OF WELDED WIRE WALL INSTALLED, SUPPLIED QUANTITIES MAY VARY



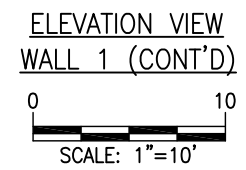
REFERENCES:
PLANS & ELEVATIONS: UTAH DEPARTMENT OF TRANSPORTATION, RED HILLS PARKWAY, PROJ. NO. F-3190(11)0, DRG. NO. R-683A, SHEETS 2 & 3 OF 3

| | | | | | | | | | | |
|--|---|---|--|-------------------|----------------------|--------------|--|---|--|--------------------------------|
| | | DESIGN BY: BD | DATE: Oct 12, 2011 | REV. NO. 1 | DATE 11.01.11 | BY BD | DESCRIPTION Update mat sizes for available material | <small>THIS DRAWING IS FURNISHED SOLELY FOR THE USE OF OR IN CONNECTION WITH THIS PROJECT, AND THE PROPRIETARY INFORMATION SHOWN HEREON IS NOT TO BE TRANSMITTED TO ANY OTHER ORGANIZATION WITHOUT SPECIFIC AUTHORIZATION BY THE HILFIKER COMPANY. HILFIKER RETAINING WALLS ARE PROTECTED BY ONE OR MORE OF THE FOLLOWING PATENTS: 2,433,613; 2,433,617; 2,888,816; 4,117,686; 4,320,089; 4,324,508; 4,391,557; 4,505,621; 4,643,018; 4,661,023; 4,856,939; 5,076,335; 5,647,695; 5,722,799; 6,351,070 AND OTHERS. OTHER PATENTS PENDING (2004)</small> | ELEVATION VIEW - WALL 1 (CONT'D) Welded Wire Retaining Walls Red Hills Parkway - Bluff Street to Industrial Road St. George, Utah | PROJECT NO: 11-03-42 |
| | <small>DESIGNED BY: GEOTECHNICAL DESIGN SYSTEMS INC. 885 E 4800 S, Ste. 140, Salt Lake City, Utah 84107 (801)262-1942 phone/ 262-1943 fax</small> | <small>DRAWN BY: LAJ</small> <small>CHKD. BY: BD</small> <small>APPR. BY: JB</small> | <small>CURRENT DATE: Nov 01, 2011</small> | | | | | | | SHEET NO: WW 2.02 |

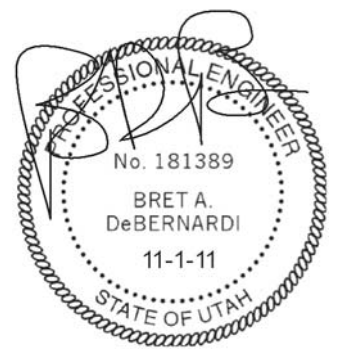
HRW Job No. 110811AW



| | | | |
|----------|--|--|--|
| H | TOTAL HEIGHT OF WALL AT EACH SEGMENT | | W7.0 X 4.0 (8"x21" WIRE SPACING) STANDARD MATS. SEE B3 FOR MAT LENGTH |
| B1 | BASE LENGTH WIRE MATS, CAP AND PRONGLESS MAT & INTERMEDIATE MATS | | W9.5 X 4.0 (8"x21" WIRE SPACING) STANDARD MATS. SEE B3 FOR MAT LENGTH |
| B2 TO B3 | BASE LENGTH WIRE MATS, STANDARD REINFORCING MATS | | W7.0 X 4.0 (8"x21" WIRE SPACING) FLAT INTERMEDIATE MATS. SEE B3 FOR MAT LENGTH |
| | W7.0 X 3.5 (8"x12" WIRE SPACING) CAP MAT AND PRONGLESS MATS. SEE B1 FOR MAT LENGTH | | |
| | W7.0 X 3.5 (8"x10.5" WIRE SPACING) STANDARD MATS. SEE B2 FOR MAT LENGTH | | |



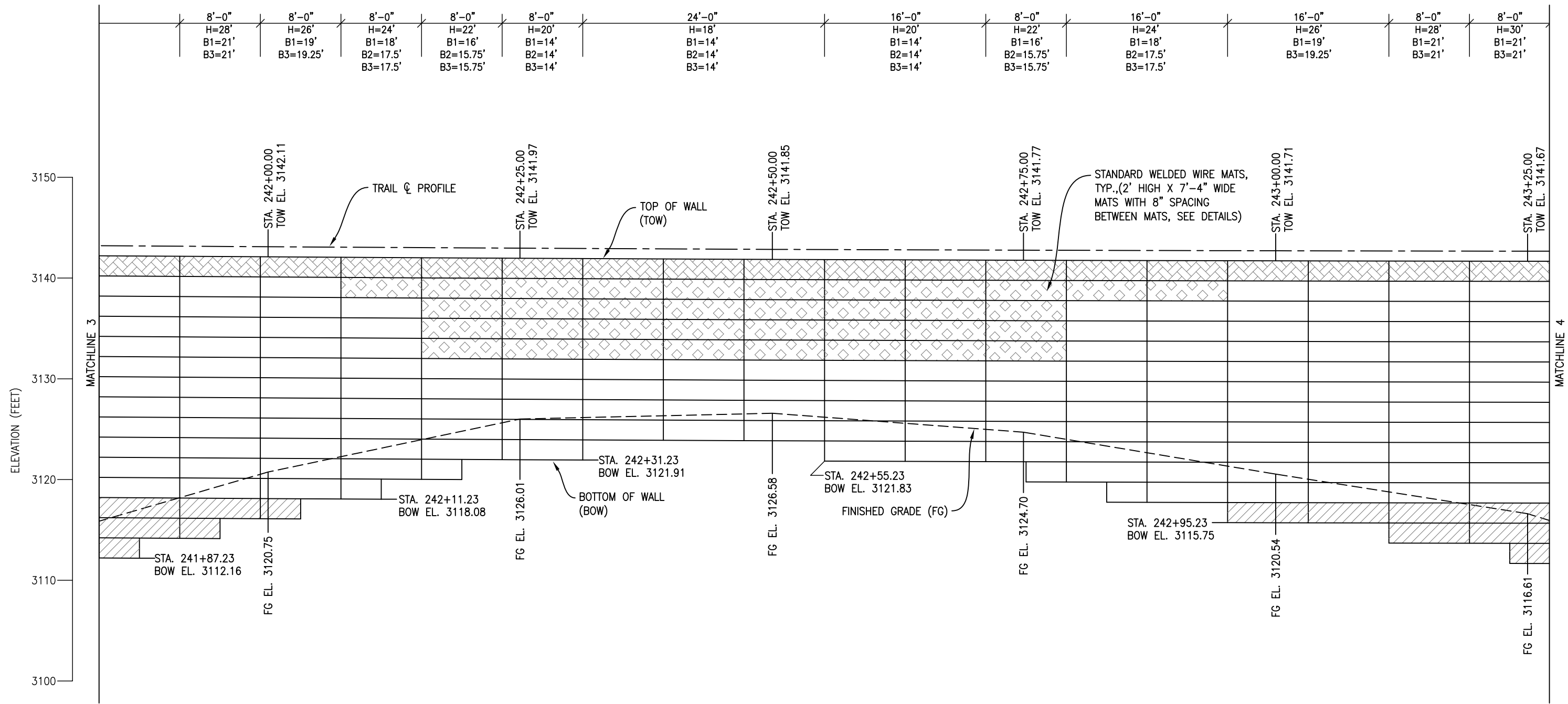
WALL 1: APPROXIMATELY 24,197 SQUARE FACE FEET OF WELDED WIRE WALL INSTALLED, SUPPLIED QUANTITIES MAY VARY



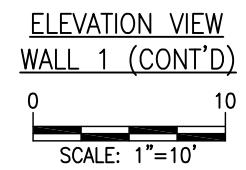
REFERENCES:
PLANS & ELEVATIONS: UTAH DEPARTMENT OF TRANSPORTATION, RED HILLS PARKWAY, PROJ. NO. F-3190(11)0, DRG. NO. R-683A, SHEETS 2 & 3 OF 3

| | | | | | | | | | | |
|--|--|----------------------|-----------------------------------|-------------------|----------------------|--------------|--|---|--|--------------------------------|
| | | DESIGN BY: BD | DATE: Oct 12, 2011 | REV. NO. 1 | DATE 11.01.11 | BY BD | DESCRIPTION Update mat sizes for available material | <small>THIS DRAWING IS FURNISHED SOLELY FOR THE USE OF OR IN CONNECTION WITH THIS PROJECT, AND THE PROPRIETARY INFORMATION SHOWN HEREON IS NOT TO BE TRANSMITTED TO ANY OTHER ORGANIZATION WITHOUT SPECIFIC AUTHORIZATION BY THE HILFIKER COMPANY. HILFIKER RETAINING WALLS ARE PROTECTED BY ONE OR MORE OF THE FOLLOWING PATENTS: 243,613; 2,435,997; 2,888,616; 4,117,686; 4,359,089; 4,324,508; 4,391,557; 4,505,621; 4,643,018; 4,661,023; 4,856,939; 5,076,735; 5,647,695; 5,722,799; 6,387,070 AND OTHERS. OTHER PATENTS PENDING (2004)</small> | ELEVATION VIEW - WALL 1 (CONT'D) Welded Wire Retaining Walls Red Hills Parkway - Bluff Street to Industrial Road St. George, Utah | PROJECT NO: 11-03-42 |
| | DESIGNED BY: GEOTECHNICAL DESIGN SYSTEMS INC. 885 E 4800 S, Ste. 140, Salt Lake City, Utah 84107 (801)262-1942 phone/ 262-1943 fax | DRAWN BY: LAJ | CURRENT DATE: Nov 01, 2011 | | | | | | | SHEET NO: WW 2.03 |
| | CHKD. BY: BD | | | | | | | | | |
| | APPR. BY: JB | | | | | | | | | |

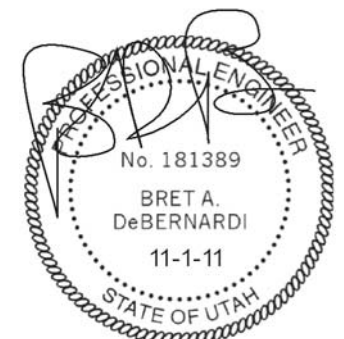
HRW Job No. 110811AW



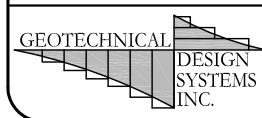
| | | | |
|----------|--|--|--|
| H | TOTAL HEIGHT OF WALL AT EACH SEGMENT | | W7.0 X 4.0 (8"X21" WIRE SPACING) STANDARD MATS. SEE B3 FOR MAT LENGTH |
| B1 | BASE LENGTH WIRE MATS, CAP AND PRONGLESS MAT & INTERMEDIATE MATS | | W9.5 X 4.0 (8"X21" WIRE SPACING) STANDARD MATS. SEE B3 FOR MAT LENGTH |
| B2 TO B3 | BASE LENGTH WIRE MATS, STANDARD REINFORCING MATS | | W7.0 X 4.0 (8"X21" WIRE SPACING) FLAT INTERMEDIATE MATS. SEE B3 FOR MAT LENGTH |
| | W7.0 X 3.5 (8"X12" WIRE SPACING) CAP MAT AND PRONGLESS MATS. SEE B1 FOR MAT LENGTH | | |
| | W7.0 X 3.5 (8"X10.5" WIRE SPACING) STANDARD MATS. SEE B2 FOR MAT LENGTH | | |



WALL 1: APPROXIMATELY 24,197 SQUARE FACE FEET OF WELDED WIRE WALL INSTALLED, SUPPLIED QUANTITIES MAY VARY



REFERENCES:
PLANS & ELEVATIONS: UTAH DEPARTMENT OF TRANSPORTATION, RED HILLS PARKWAY, PROJ. NO. F-3190(11)0, DRG. NO. R-683A, SHEETS 2 & 3 OF 3



HILFIKER RETAINING WALLS
Eureka, CA Phone 707/443-5093 Fax 707/443-2891

DESIGNED BY: **BD**
DRAWN BY: **LAJ**
CHKD. BY: **BD**
APPR. BY: **JB**

DATE: **Oct 12, 2011**
CURRENT DATE: **Nov 01, 2011**

| REV. NO. | DATE | BY | DESCRIPTION |
|----------|----------|----|---|
| 1 | 11.01.11 | BD | Update mat sizes for available material |

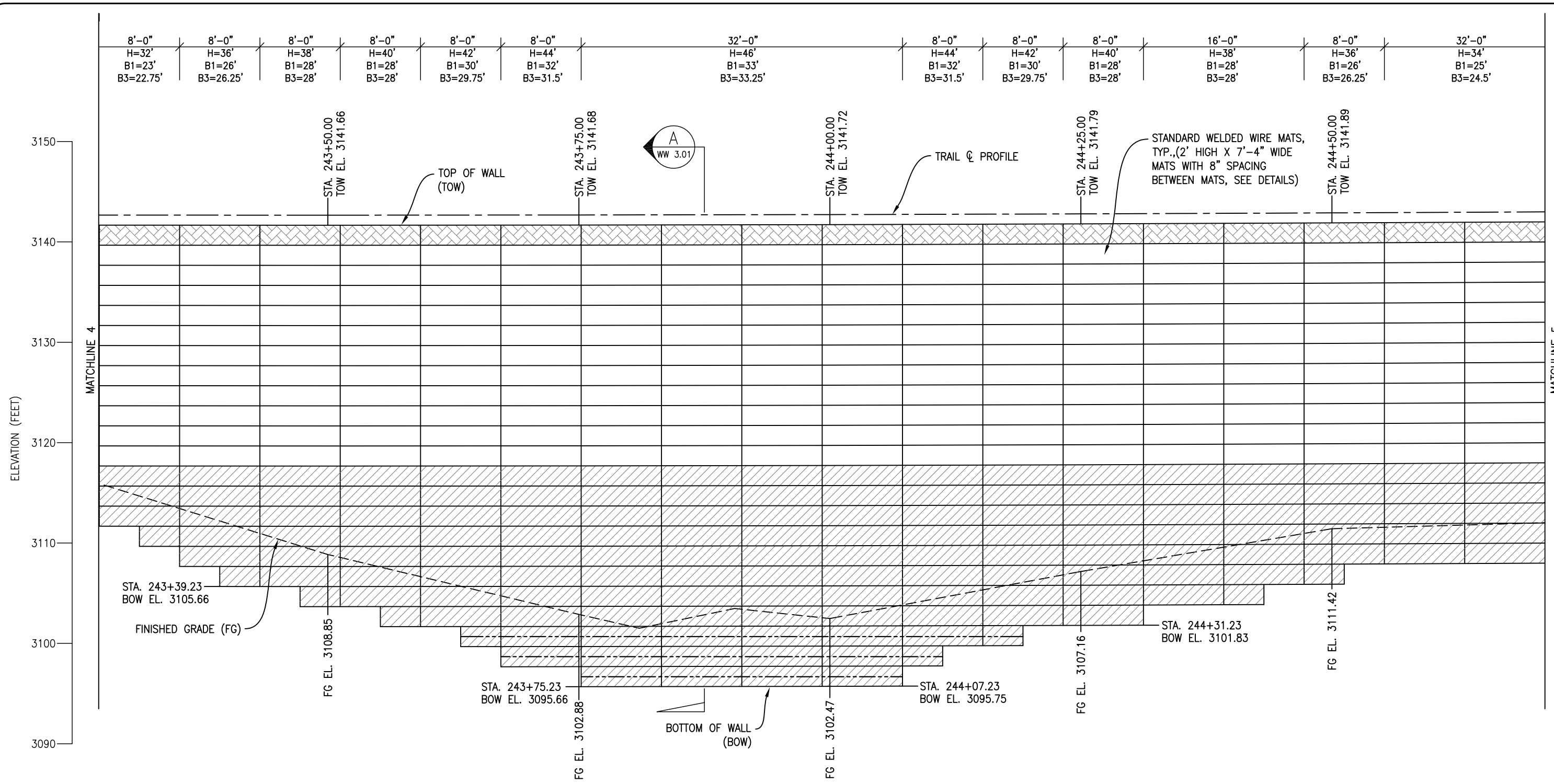
THIS DRAWING IS FURNISHED SOLELY FOR THE USE OF OR IN CONNECTION WITH THIS PROJECT, AND THE PROPRIETARY INFORMATION SHOWN HEREON IS NOT TO BE TRANSMITTED TO ANY OTHER ORGANIZATION WITHOUT SPECIFIC AUTHORIZATION BY THE HILFIKER COMPANY. HILFIKER RETAINING WALLS ARE PROTECTED BY ONE OR MORE OF THE FOLLOWING PATENTS: 243,613; 2,435,997; 2,884,816; 4,117,686; 4,325,089; 4,324,508; 4,391,557; 4,505,621; 4,643,018; 4,661,023; 4,856,939; 5,076,735; 5,647,695; 5,722,799; 6,387,070 AND OTHERS. OTHER PATENTS PENDING (2004)

ELEVATION VIEW - WALL 1 (CONT'D)
Welded Wire Retaining Walls
Red Hills Parkway - Bluff Street to Industrial Road
St. George, Utah

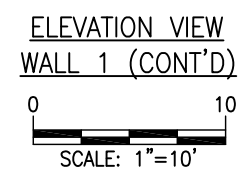
HRW Job No. 110811AW

PROJECT NO:
11-03-42

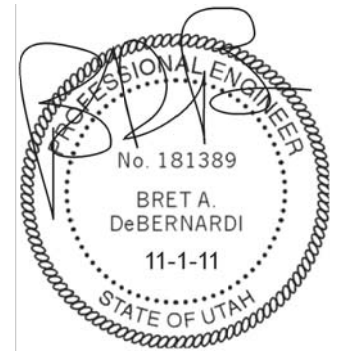
SHEET NO:
WW 2.04



WALL 1: APPROXIMATELY 24,197 SQUARE FACE FEET OF WELDED WIRE WALL INSTALLED, SUPPLIED QUANTITIES MAY VARY

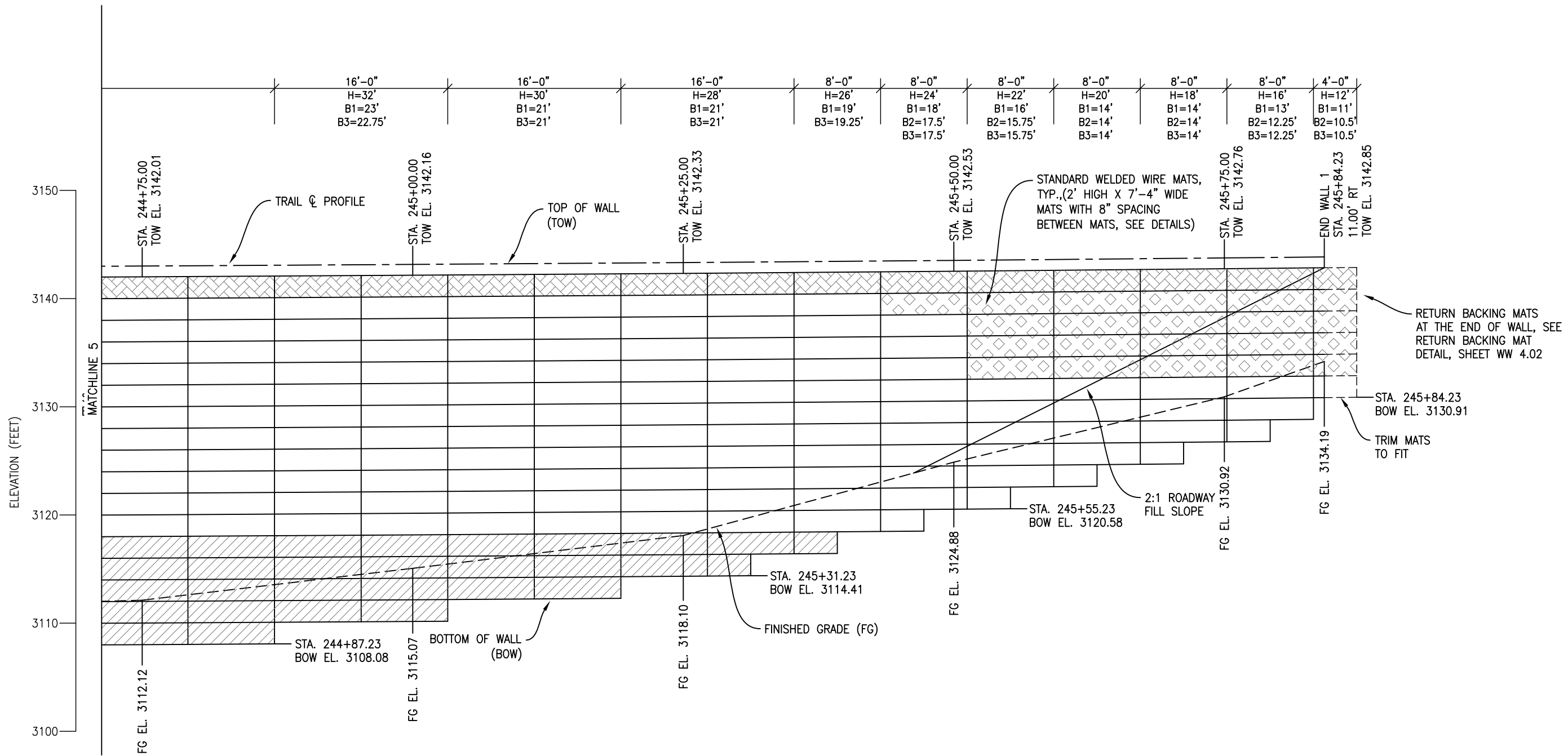


| | | | |
|----------|--|--|---|
| H | TOTAL HEIGHT OF WALL AT EACH SEGMENT | | W7.0 X 4.0 (8"X21" WIRE SPACING) STANDARD MATS. SEE B3 FOR MAT LENGTH |
| B1 | BASE LENGTH WIRE MATS, CAP AND PRONGLESS MAT & INTERMEDIATE MATS | | W9.5 X 4.0 (8"X21" WIRE SPACING) STANDARD MATS. SEE B3 FOR MAT LENGTH |
| B2 TO B3 | BASE LENGTH WIRE MATS, STANDARD REINFORCING MATS | | W7.0X 4.0 (8"X21" WIRE SPACING) FLAT INTERMEDIATE MATS. SEE B3 FOR MAT LENGTH |
| | W7.0 X 3.5 (8"X12" WIRE SPACING) CAP MAT AND PRONGLESS MATS. SEE B1 FOR MAT LENGTH | | |
| | W7.0 X 3.5 (8"X10.5" WIRE SPACING) STANDARD MATS. SEE B2 FOR MAT LENGTH | | |

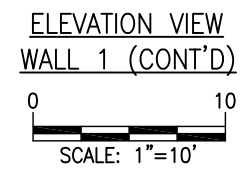


REFERENCES:
 PLANS & ELEVATIONS: UTAH DEPARTMENT OF TRANSPORTATION, RED HILLS PARKWAY, PROJ. NO. F-3190(11)0, DRG. NO. R-683A, SHEETS 2 & 3 OF 3

| | | | | | | | | | | |
|--|--|---|---|--|-------------------------------------|--|--|---|--|--------------------------------|
| | | DESIGN BY: BD | DATE: Oct 12, 2011 | REV. NO. 1 | DATE 11.01.11 | BY BD | DESCRIPTION Update mat sizes for available material | <small>THIS DRAWING IS FURNISHED SOLELY FOR THE USE OF OR IN CONNECTION WITH THIS PROJECT, AND THE PROPRIETARY INFORMATION SHOWN HEREON IS NOT TO BE TRANSMITTED TO ANY OTHER ORGANIZATION WITHOUT SPECIFIC AUTHORIZATION BY THE HILFIKER COMPANY. HILFIKER RETAINING WALLS ARE PROTECTED BY ONE OR MORE OF THE FOLLOWING PATENTS: 2,433,613; 2,433,997; 2,888,816; 4,117,686; 4,359,089; 4,324,508; 4,391,557; 4,505,621; 4,643,518; 4,661,023; 4,654,939; 5,076,735; 5,647,695; 5,322,799; 6,387,070 AND OTHERS. OTHER PATENTS PENDING (2004)</small> | ELEVATION VIEW - WALL 1 (CONT'D) Welded Wire Retaining Walls Red Hills Parkway - Bluff Street to Industrial Road St. George, Utah | PROJECT NO: 11-03-42 |
| | <small>DESIGNED BY: GEOTECHNICAL DESIGN SYSTEMS INC. 885 E 4800 S, Ste. 140, Salt Lake City, Utah 84107 (801)262-1942 phone/ 262-1943 fax</small> | <small>DESIGN BY: BD DRAWN BY: LAJ CHKD. BY: BD APPR. BY: JB</small> | <small>DATE: Oct 12, 2011 CURRENT DATE: Nov 01, 2011</small> | <small>REV. NO. 1 DATE 11.01.11 BY BD DESCRIPTION Update mat sizes for available material</small> | <small>HRW Job No. 110811AW</small> | <small>SHEET NO: WW 2.05</small> | | | | |



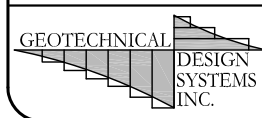
| | | | |
|----------|--|--|--|
| H | TOTAL HEIGHT OF WALL AT EACH SEGMENT | | W7.0 X 4.0 (8"X21" WIRE SPACING) STANDARD MATS. SEE B3 FOR MAT LENGTH |
| B1 | BASE LENGTH WIRE MATS, CAP AND PRONGLESS MAT & INTERMEDIATE MATS | | W9.5 X 4.0 (8"X21" WIRE SPACING) STANDARD MATS. SEE B3 FOR MAT LENGTH |
| B2 TO B3 | BASE LENGTH WIRE MATS, STANDARD REINFORCING MATS | | W7.0 X 4.0 (8"X21" WIRE SPACING) FLAT INTERMEDIATE MATS. SEE B3 FOR MAT LENGTH |
| | W7.0 X 3.5 (8"X12" WIRE SPACING) CAP MAT AND PRONGLESS MATS. SEE B1 FOR MAT LENGTH | | |
| | W7.0 X 3.5 (8"X10.5" WIRE SPACING) STANDARD MATS. SEE B2 FOR MAT LENGTH | | |



WALL 1: APPROXIMATELY 24,197 SQUARE FACE FEET OF WELDED WIRE WALL INSTALLED, SUPPLIED QUANTITIES MAY VARY



REFERENCES:
PLANS & ELEVATIONS: UTAH DEPARTMENT OF TRANSPORTATION, RED HILLS PARKWAY, PROJ. NO. F-3190(11)0, DRG. NO. R-683A, SHEETS 2 & 3 OF 3



HILFIKER RETAINING WALLS
Eureka, CA Phone 707/443-5093 Fax 707/443-2891

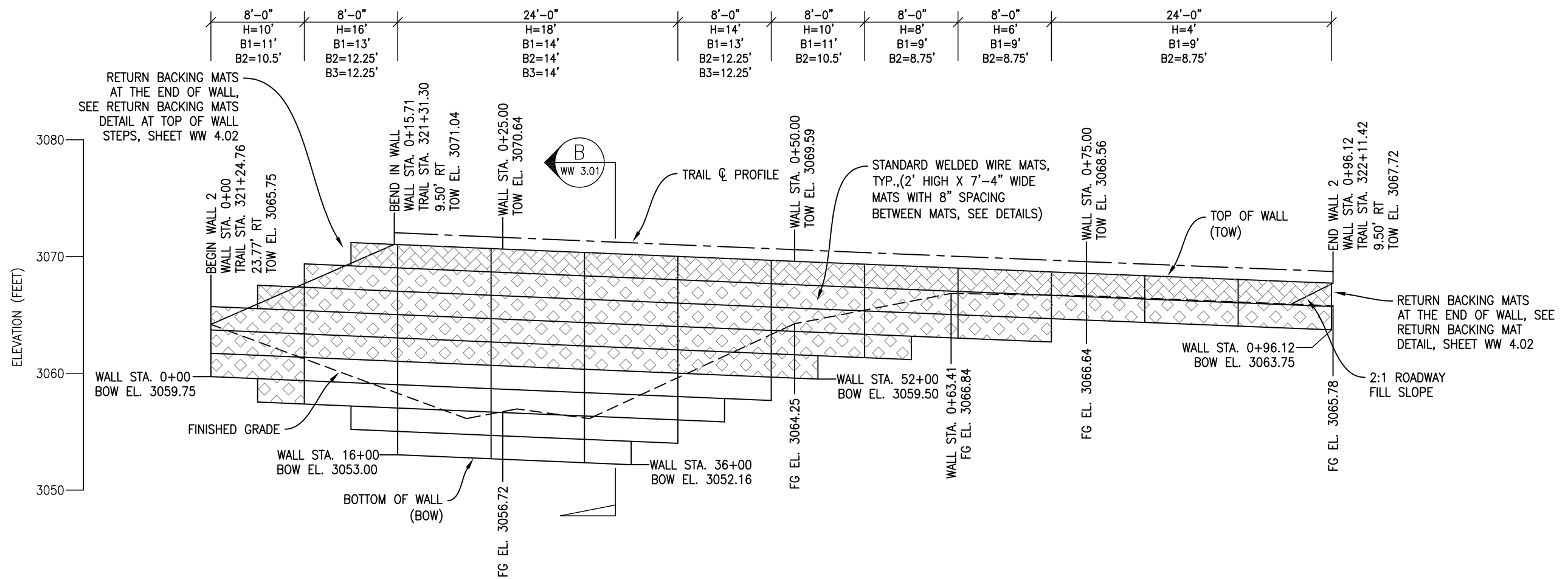
| | | | | | |
|----------------------|-----------------------------------|-------------------|----------------------|--------------|--|
| DESIGN BY: BD | DATE: Oct 12, 2011 | REV. NO. 1 | DATE 11.01.11 | BY BD | DESCRIPTION Update mat sizes for available material |
| DRAWN BY: LAJ | CURRENT DATE: Nov 01, 2011 | | | | |
| CHKD. BY: BD | | | | | |
| APPR. BY: JB | | | | | |

THIS DRAWING IS FURNISHED SOLELY FOR THE USE OF OR IN CONNECTION WITH THIS PROJECT, AND THE PROPRIETARY INFORMATION SHOWN HEREON IS NOT TO BE TRANSMITTED TO ANY OTHER ORGANIZATION WITHOUT SPECIFIC AUTHORIZATION BY THE HILFIKER COMPANY. HILFIKER RETAINING WALLS ARE PROTECTED BY ONE OR MORE OF THE FOLLOWING PATENTS: 243,613; 2,452,972; 2,884,816; 4,117,686; 4,325,089; 4,324,508; 4,391,557; 4,505,621; 4,643,018; 4,661,023; 4,856,939; 5,076,735; 5,647,695; 5,722,799; 6,351,070 AND OTHERS. OTHER PATENTS PENDING.

ELEVATION VIEW - WALL 1 (CONT'D)
Welded Wire Retaining Walls
Red Hills Parkway - Bluff Street to Industrial Road
St. George, Utah

HRW Job No. 110811AW

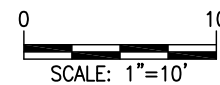
| | |
|-------------|----------|
| PROJECT NO: | 11-03-42 |
| SHEET NO: | WW 2.06 |



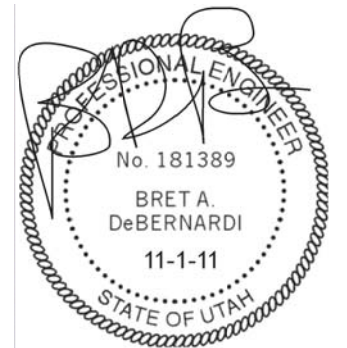
| | | | |
|----------|--|--|---|
| H | TOTAL HEIGHT OF WALL AT EACH SEGMENT | | W7.0 X 4.0 (8"X21" WIRE SPACING) STANDARD MATS. SEE B3 FOR MAT LENGTH |
| B1 | BASE LENGTH WIRE MATS, CAP AND PRONGLESS MAT & INTERMEDIATE MATS | | W9.5 X 4.0 (8"X21" WIRE SPACING) STANDARD MATS. SEE B3 FOR MAT LENGTH |
| B2 TO B3 | BASE LENGTH WIRE MATS, STANDARD REINFORCING MATS | | W7.0X 4.0 (8"X21" WIRE SPACING) FLAT INTERMEDIATE MATS. SEE B3 FOR MAT LENGTH |
| | W7.0 X 3.5 (8"X12" WIRE SPACING) CAP MAT AND PRONGLESS MATS. SEE B1 FOR MAT LENGTH | | |
| | W7.0 X 3.5 (8"X10.5" WIRE SPACING) STANDARD MATS. SEE B2 FOR MAT LENGTH | | |

ELEVATION VIEW

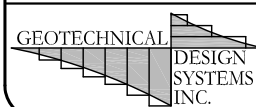
WALL 2



WALL 2: APPROXIMATELY 976 SQUARE FEET OF WELDED WIRE WALL INSTALLED, SUPPLIED QUANTITIES MAY VARY



REFERENCES:
 PLANS & ELEVATIONS: UTAH DEPARTMENT OF TRANSPORTATION, RED HILLS PARKWAY, PROJ. NO. F-3190(11)0, DRG. NO. R-683A, SHEETS 2 & 3 OF 3



HILFIKER RETAINING WALLS
 Eureka, CA Phone 707/443-5093 Fax 707/443-2891

DESIGNED BY: **BD**
 DRAWN BY: **LAJ**
 CHKD. BY: **BD**
 APPR. BY: **JB**

DESIGNED BY:
GEOTECHNICAL DESIGN SYSTEMS INC.
 885 E 4800 S, Ste. 140, Salt Lake City, Utah 84107
 (801)262-1942 phone/ 262-1943 fax

| DESIGN BY: | DATE: | REV. NO. | DATE | BY | DESCRIPTION |
|------------|--------------|----------|----------|----|---|
| BD | Oct 12, 2011 | 1 | 11.01.11 | BD | Update mat sizes for available material |
| BD | Nov 01, 2011 | | | | |

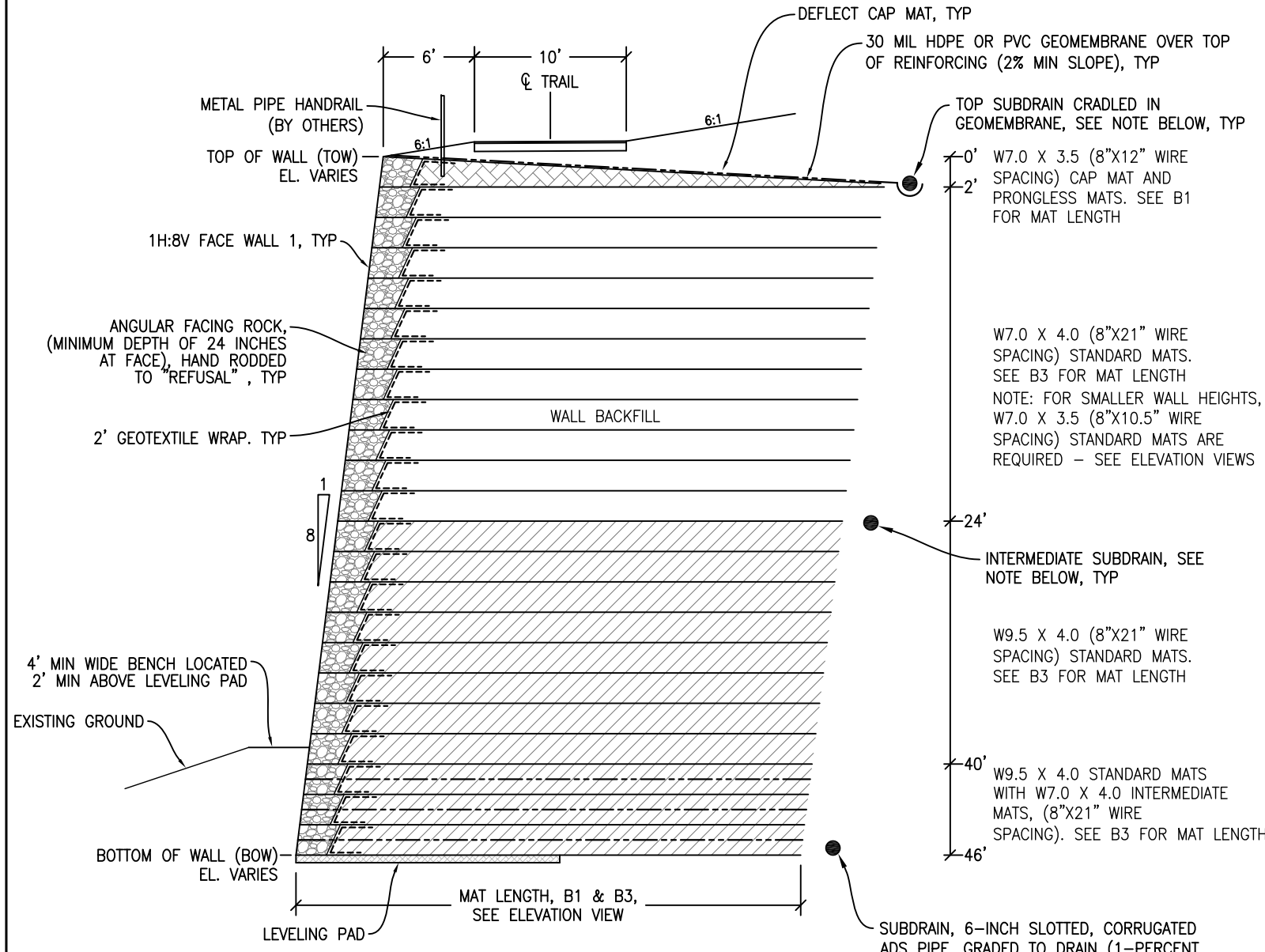
THIS DRAWING IS FURNISHED SOLELY FOR THE USE OF OR IN CONNECTION WITH THIS PROJECT, AND THE PROPRIETARY INFORMATION SHOWN HEREON IS NOT TO BE TRANSMITTED TO ANY OTHER ORGANIZATION WITHOUT SPECIFIC AUTHORIZATION BY THE HILFIKER COMPANY. HILFIKER RETAINING WALLS ARE PROTECTED BY ONE OR MORE OF THE FOLLOWING PATENTS: 243,613; 2,435,972; 2,884,816; 4,117,086; 4,359,089; 4,324,508; 4,391,557; 4,505,621; 4,643,018; 4,665,023; 4,856,939; 5,076,735; 5,647,695; 5,722,799; 6,381,070 AND OTHERS. OTHER PATENTS PENDING (2004)

ELEVATION VIEW - WALL 2
Welded Wire Retaining Walls
 Red Hills Parkway - Bluff Street to Industrial Road
 St. George, Utah

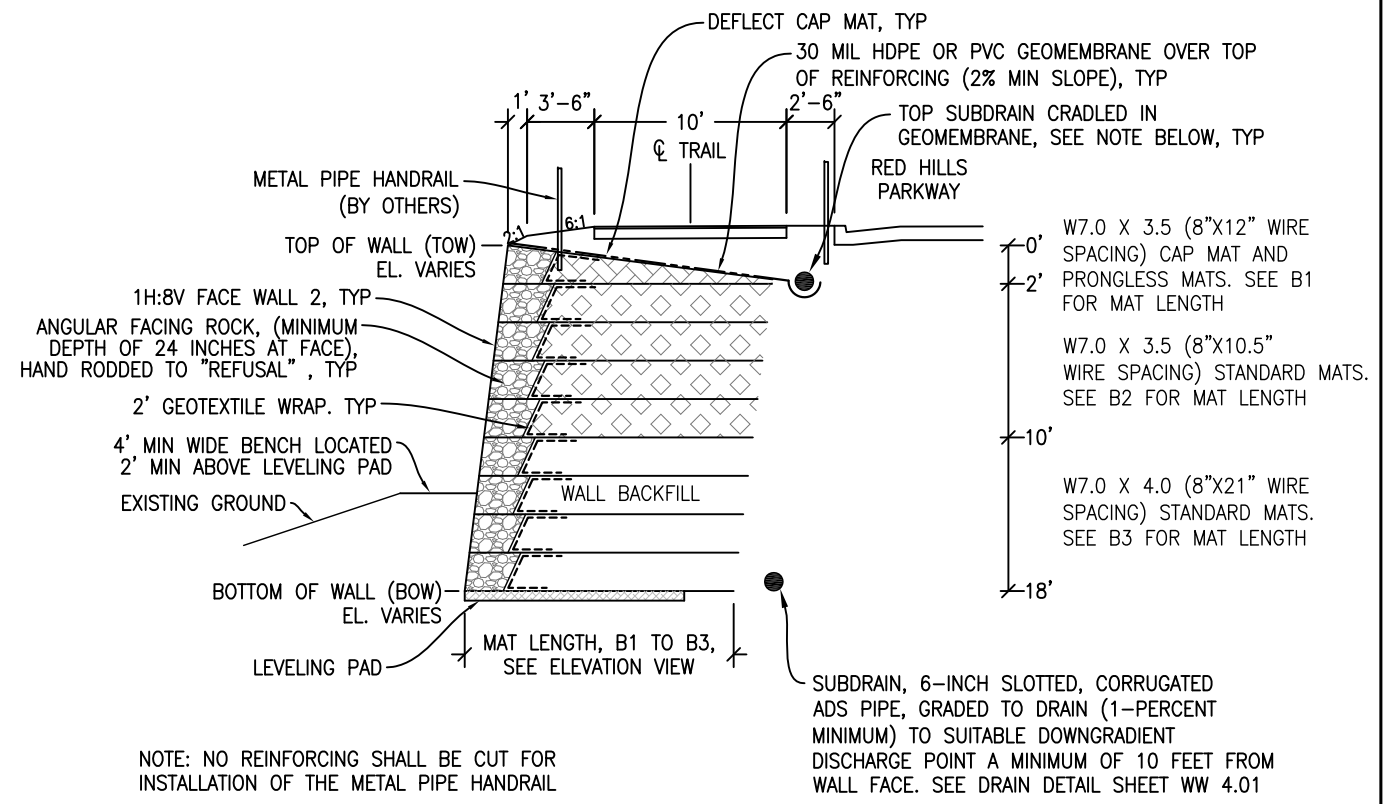
HRW Job No. 110811AW

PROJECT NO:
11-03-42

SHEET NO:
WW 2.07



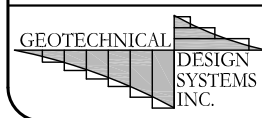
CROSS-SECTION A
WALL 1



CROSS-SECTION B
WALL 2

NOTE: NO REINFORCING SHALL BE CUT FOR INSTALLATION OF THE METAL PIPE HANDRAIL

NOTE: NO REINFORCING SHALL BE CUT FOR INSTALLATION OF THE METAL PIPE HANDRAIL



HILFIKER RETAINING WALLS
Eureka, CA Phone 707/443-5093 Fax 707/443-2891

DESIGNED BY: **BD**
DRAWN BY: **LAJ**
CHKD. BY: **BD**
APPR. BY: **JB**

DATE: **Oct 12, 2011**
CURRENT DATE: **Nov 01, 2011**

885 E 4800 S, Ste. 140, Salt Lake City, Utah 84107
(801)262-1942 phone/ 262-1943 fax

| DESIGN BY: | DATE: | REV. NO. | DATE | BY | DESCRIPTION |
|------------|--------------|----------|----------|----|---|
| BD | Oct 12, 2011 | 1 | 11.01.11 | BD | Update mat sizes for available material |
| LAJ | | | | | |
| BD | | | | | |
| JB | | | | | |

THIS DRAWING IS FURNISHED SOLELY FOR THE USE OF OR IN CONNECTION WITH THIS PROJECT, AND THE PROPRIETARY INFORMATION SHOWN HEREON IS NOT TO BE TRANSMITTED TO ANY OTHER ORGANIZATION WITHOUT SPECIFIC AUTHORIZATION BY THE HILFIKER COMPANY. HILFIKER RETAINING WALLS ARE PROTECTED BY ONE OR MORE OF THE FOLLOWING PATENTS: 243,613; 243,697; 288,616; 4,117,696; 4,329,089; 4,324,508; 4,391,557; 4,505,621; 4,643,018; 4,661,023; 4,856,939; 5,076,335; 5,647,695; 5,722,789; 6,367,070 AND OTHERS. OTHER PATENTS PENDING (2004)

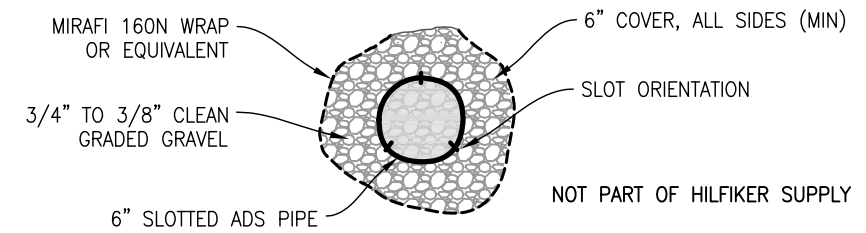
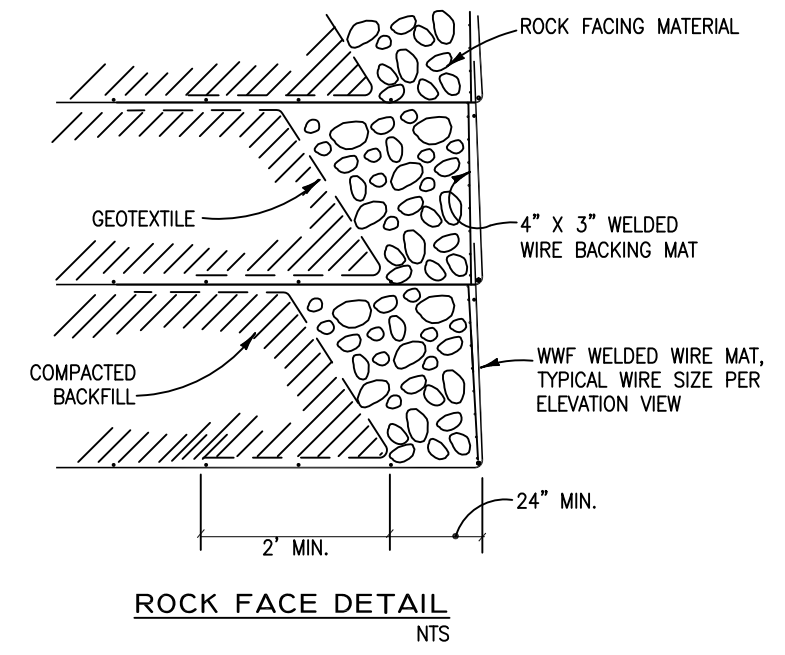
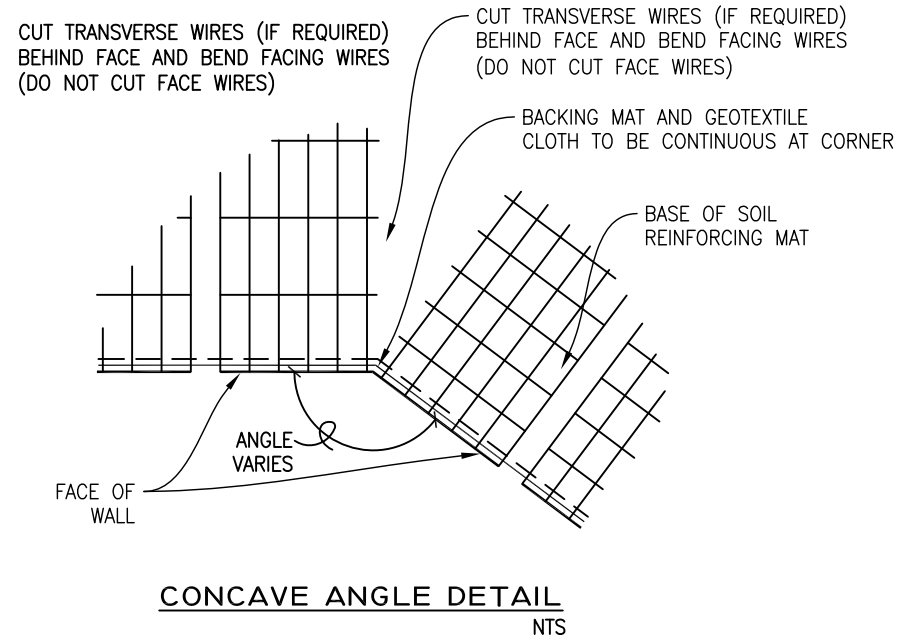
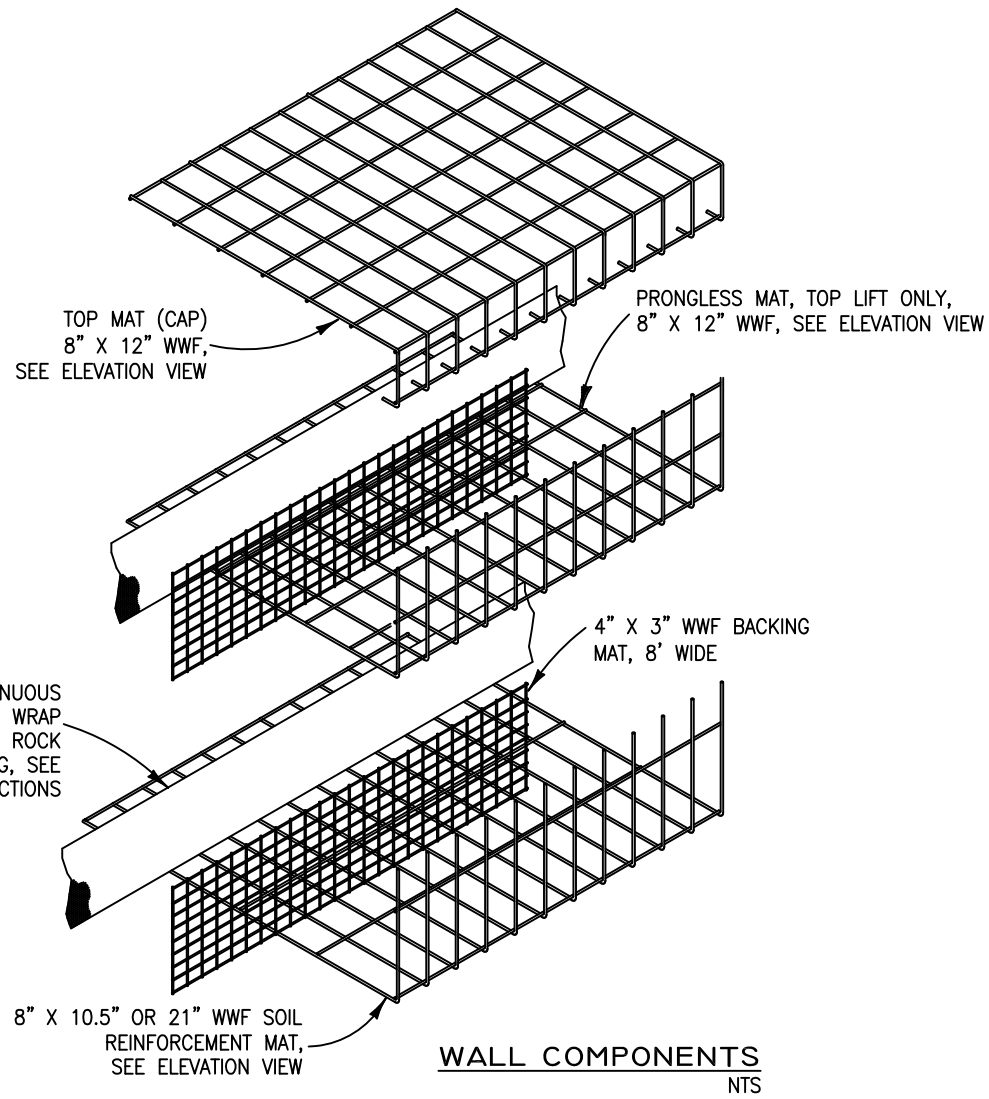
CROSS-SECTIONS A & B
Welded Wire Retaining Walls
Red Hills Parkway - Bluff Street to Industrial Road
St. George, Utah



HRW Job No. 110811AW

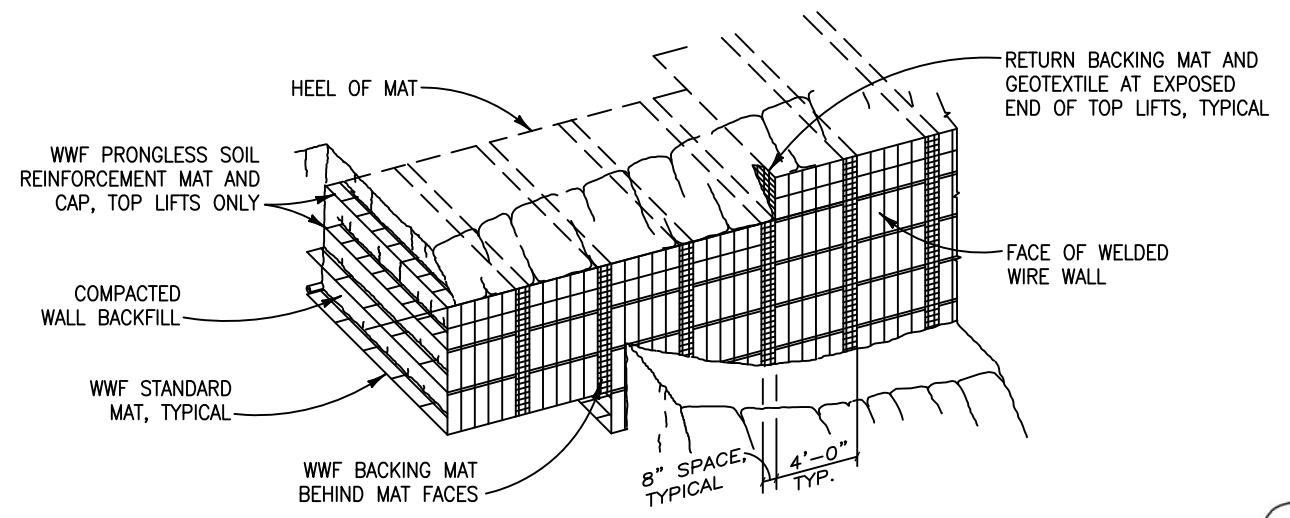
PROJECT NO:
11-03-42

SHEET NO:
WW 3.01



PIPE, GRADED TO DRAIN (1-PERCENT MINIMUM). PIPE TO "T" TO SOLID PIPE AT ALL LOW POINTS AND AT 100 FEET ON CENTER MAXIMUM AND EXTEND THROUGH WALL FACE. GRADED TO DRAIN, DAYLIGHT MINIMUM OF 10'-0" FROM FACE OF WALL. RIPRAP OUTLET OF PIPE.

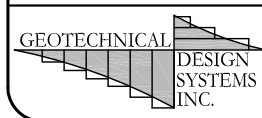
SUBDRAIN DETAIL
NTS



PICTORIAL ELEVATION
NTS



HRW Job No. 110811AW



HILFIKER RETAINING WALLS
Eureka, CA Phone 707/443-5093 Fax 707/443-2891

DESIGNED BY: **BD**
DRAWN BY: **LAJ**
CHKD. BY: **BD**
APPR. BY: **JB**

DATE: **Oct 12, 2011**
CURRENT DATE: **Nov 01, 2011**

885 E 4800 S, Ste. 140, Salt Lake City, Utah 84107
(801)262-1942 phone/ 262-1943 fax

| REV. NO. | DATE | BY | DESCRIPTION |
|----------|----------|----|---|
| 1 | 11.01.11 | BD | Update mat sizes for available material |

THIS DRAWING IS FURNISHED SOLELY FOR THE USE OF OR IN CONNECTION WITH THIS PROJECT, AND THE PROPRIETARY INFORMATION SHOWN HEREON IS NOT TO BE TRANSMITTED TO ANY OTHER ORGANIZATION WITHOUT SPECIFIC AUTHORIZATION BY THE HILFIKER COMPANY. HILFIKER RETAINING WALLS ARE PROTECTED BY ONE OR MORE OF THE FOLLOWING PATENTS: 243,613; 2,432,997; 2,884,616; 4,117,696; 4,329,089; 4,324,508; 4,391,557; 4,505,621; 4,643,018; 4,661,023; 4,656,930; 5,076,735; 5,647,695; 5,722,799; 6,351,070 AND OTHERS. OTHER PATENTS PENDING (2004)

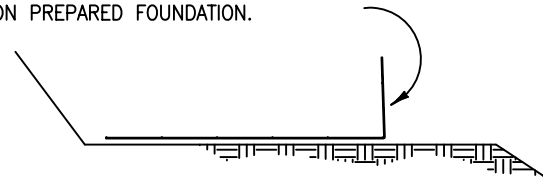
CONSTRUCTION DETAILS
Welded Wire Retaining Walls
Red Hills Parkway - Bluff Street to Industrial Road
St. George, Utah

PROJECT NO:
11-03-42

SHEET NO:
WW 4.01

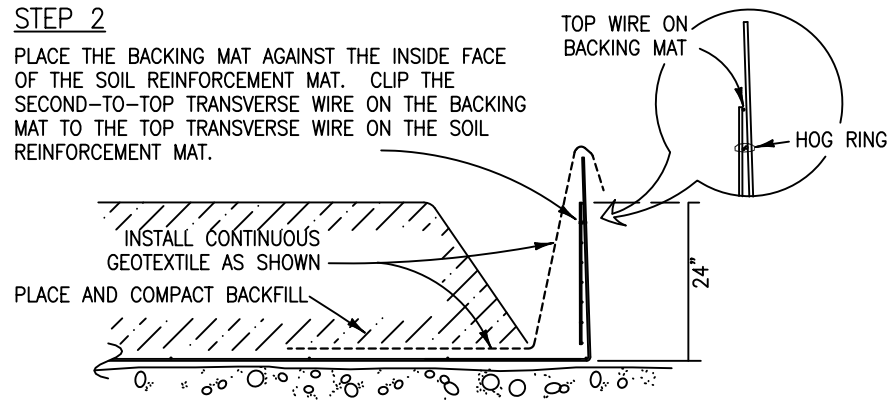
STEP 1

PLACE THE FIRST COURSE OF SOIL REINFORCEMENT MATS ON PREPARED FOUNDATION.



STEP 2

PLACE THE BACKING MAT AGAINST THE INSIDE FACE OF THE SOIL REINFORCEMENT MAT. CLIP THE SECOND-TO-TOP TRANSVERSE WIRE ON THE BACKING MAT TO THE TOP TRANSVERSE WIRE ON THE SOIL REINFORCEMENT MAT.

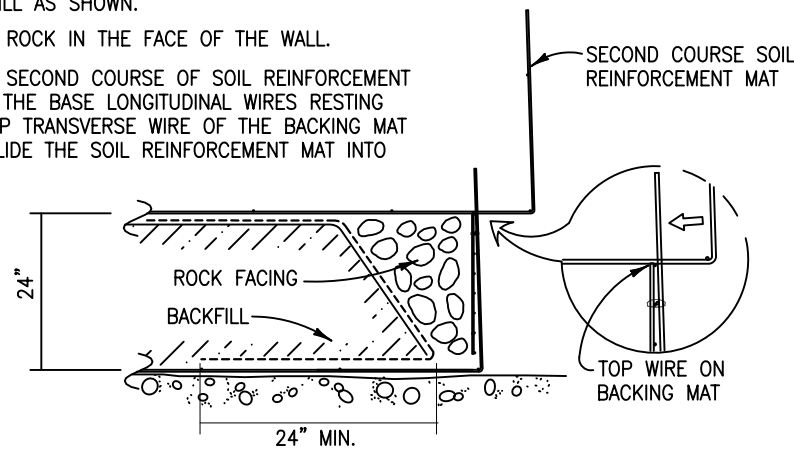


STEP 3

BRING THE GEOTEXTILE OVER THE FRONT AND TOP OF THE BACKFILL AS SHOWN.

PLACE THE ROCK IN THE FACE OF THE WALL.

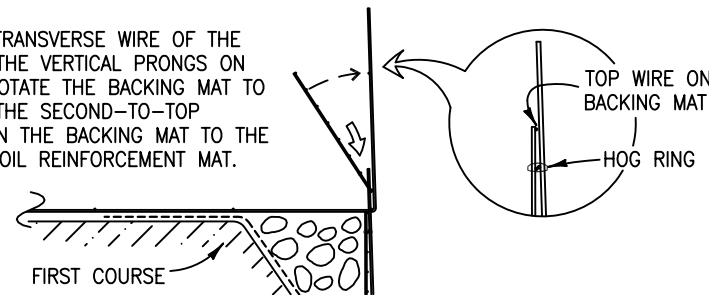
PLACE THE SECOND COURSE OF SOIL REINFORCEMENT MATS WITH THE BASE LONGITUDINAL WIRES RESTING ON THE TOP TRANSVERSE WIRE OF THE BACKING MAT BELOW. SLIDE THE SOIL REINFORCEMENT MAT INTO ALIGNMENT.



CONSTRUCTION SEQUENCE
NTS

STEP 4

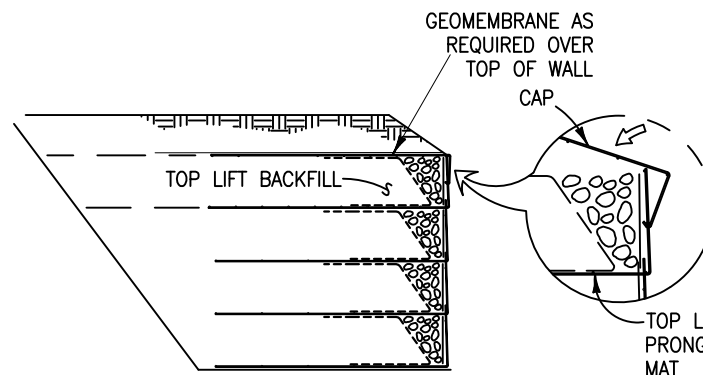
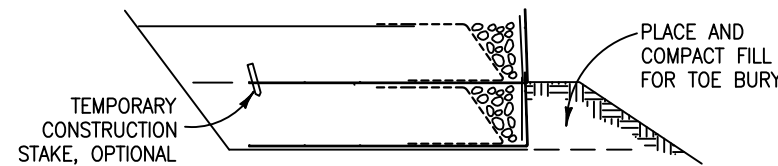
HOOK THE BOTTOM TRANSVERSE WIRE OF THE BACKING MAT OVER THE VERTICAL PRONGS ON THE LOWER MAT. ROTATE THE BACKING MAT TO VERTICAL AND CLIP THE SECOND-TO-TOP TRANSVERSE WIRE ON THE BACKING MAT TO THE TOP WIRE ON THE SOIL REINFORCEMENT MAT.



STEP 5

INSTALL THE GEOTEXTILE AS IN STEPS 2 AND 3. PLACE AND COMPACT THE BACKFILL AND ROCK TO THE BASE ELEVATION OF THE NEXT MAT.

REPEAT STEPS 2 THRU 5 TO THE TOP LIFT.



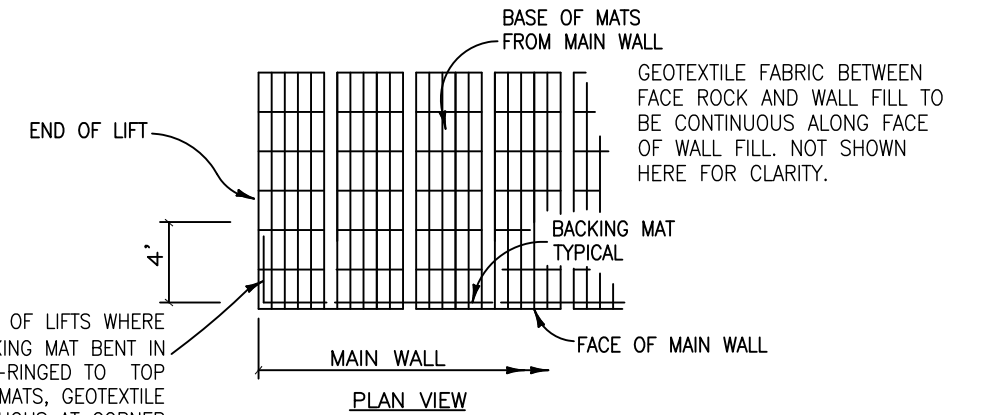
STEP 6: TOP LIFT

PLACE THE TOP LIFT PRONGLESS MAT, BACKING MAT, AND GEOTEXTILE FABRIC.

PLACE AND COMPACT BACKFILL AND ROCK IN THE TOP LIFT.

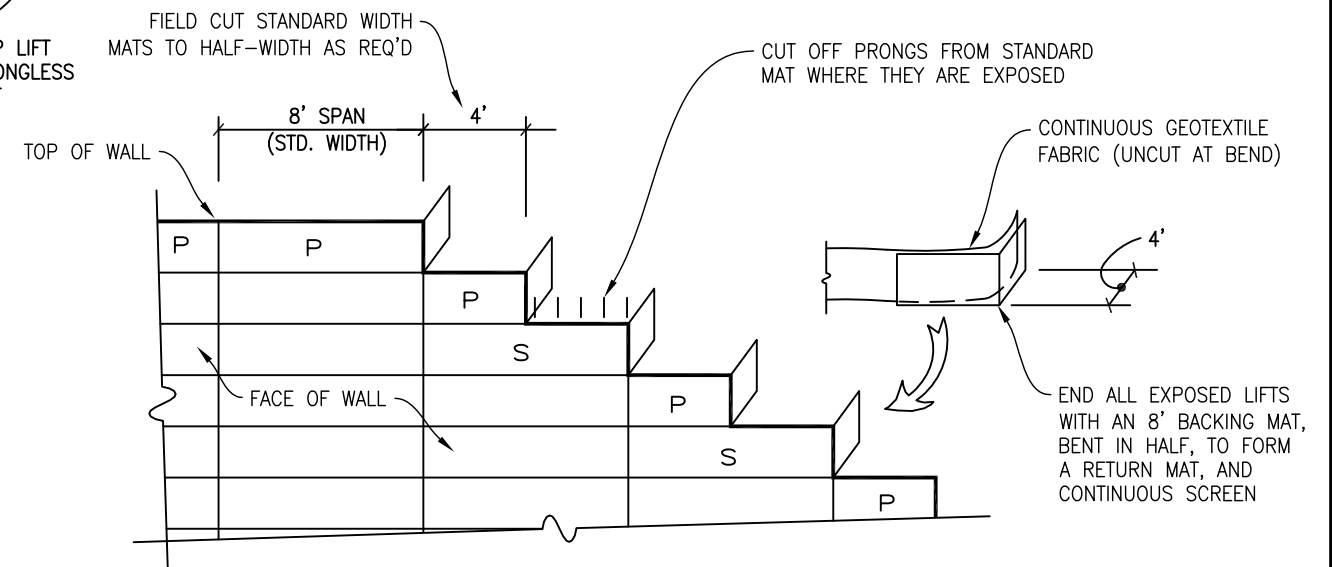
HOOK THE CAP OVER THE MIDDLE TRANSVERSE WIRE ON THE PRONGLESS MAT, AND ROTATE INTO PLACE.

PLACE AND COMPACT COVER, INSTALL GEOMEMBRANE AS REQUIRED, AND CONSTRUCT PAVEMENTS AS REQUIRED.



RETURN BACKING MATS DETAIL
NTS

ALL MATS (STANDARD AND PRONGLESS) TO BE COVERED BY FULL LENGTH CAP MAT. NOT SHOWN ON THIS DETAIL FOR CLARITY

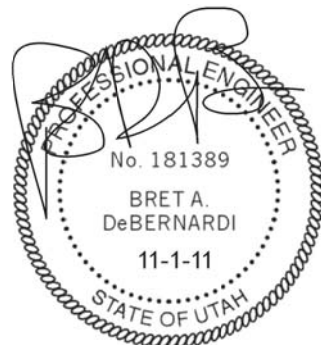


RETURN BACKING MATS DETAIL
AT TOP OF WALL STEPS
NTS

LEGEND

(THIS DETAIL ONLY)

- P 8" X 12" WWF PRONGLESS MAT
- S 8" X 21" WWF STANDARD MAT



HILFIKER RETAINING WALLS
Eureka, CA Phone 707/443-5093 Fax 707/443-2891

| DESIGN BY: | DATE: | REV. NO. | DATE | BY | DESCRIPTION |
|------------|--------------|----------|----------|----|---|
| BD | Oct 12, 2011 | 1 | 11.01.11 | BD | Update mat sizes for available material |
| DRAWN BY: | | | | | |
| LAJ | | | | | |
| CHKD. BY: | | | | | |
| BD | | | | | |
| APPR. BY: | | | | | |
| JB | Nov 01, 2011 | | | | |

THIS DRAWING IS FURNISHED SOLELY FOR THE USE OF OR IN CONNECTION WITH THIS PROJECT, AND THE PROPRIETARY INFORMATION SHOWN HEREON IS NOT TO BE TRANSMITTED TO ANY OTHER ORGANIZATION WITHOUT SPECIFIC AUTHORIZATION BY THE HILFIKER COMPANY. HILFIKER RETAINING WALLS ARE PROTECTED BY ONE OR MORE OF THE FOLLOWING PATENTS: 243,613; 243,992; 288,616; 4,117,696; 4,329,089; 4,324,508; 4,391,557; 4,505,621; 4,643,018; 4,661,023; 4,856,939; 5,076,735; 5,647,695; 5,722,799; 6,387,070 AND OTHERS. OTHER PATENTS PENDING (2004)

CONSTRUCTION DETAILS
Welded Wire Retaining Walls
Red Hills Parkway - Bluff Street to Industrial Road
St. George, Utah

HRW Job No. 110811AW

PROJECT NO:
11-03-42
SHEET NO:
WW 4.02

I. Introduction

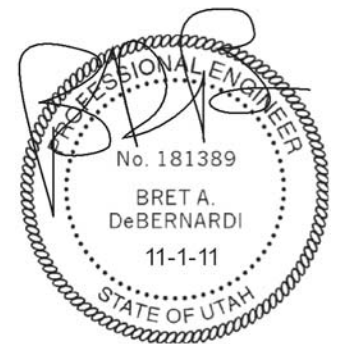
1. The scope of work outlined by these General Notes and Welded Wire Wall Specifications (separate document) include design and installation specifications for the Hilfiker Welded Wire Wall as shown on these plans.
2. Grades shown herein as well as Welded Wire Wall layout and beginning and ending stations are approximate. Field conditions (both topography and geotechnical conditions exposed during construction) must be considered in determining final design configurations for construction. Conflicts between these plans and other project plans shall be resolved by Geotechnical Design Systems Inc. (GDSI), whose decision shall be final. Design and layout are in general accordance with Project Drawings and Special Provisions [Red Hills Parkway; Bluff Street to Industrial Road, Roadway Widening and Reconstruction, Washington County," by Utah Department of Transportation, dated July 19, 2011 (Advertised for Construction)]
3. Existing and proposed utilities to be verified in field by the General Contractor. Conflicts that arise shall be resolved by Geotechnical Design Systems of Salt Lake City, Utah, whose decision shall be final.

II. Welded Wire Walls

1. The work for this portion of the project shall consist of the construction of Welded Wire Walls to the lines, grades, details, and dimensions shown in these Welded Wire Wall Plans and Specifications, as well as in conformance with all UDOT Project Plans and Special Provisions. Conflicts that arise shall be resolved by Geotechnical Design Systems of Salt Lake City, Utah, whose decision shall be final.
2. The contractor shall purchase all Welded Wire Wall materials including wire mesh reinforcing mats, and backing materials from Hilfiker Retaining Walls, 1902 Hilfiker Lane, Eureka, California, 95503, 707-443-5093. Wire mesh reinforcing and backing mats shall be constructed of non-galvanized "black" wire. Geomembrane, geotextile and subdrain are to be provided by others.
3. All Welded Wire Wall installation shall be in accordance with the installation guide as manufactured by Hilfiker Retaining Walls, and these plans. Conflicts that arise shall be resolved by Geotechnical Design Systems of Salt Lake City, Utah, whose decision shall be final. No warranty is expressed or implied, only that the design was prepared in general accordance with the design principles and practices in use at the time this work was performed. Changes to the design or layout shall only be made with express written permission of Geotechnical Design Systems Inc.
4. Contractor is responsible for determining exact location of welded wire walls in accordance with the intent of these plans and the overall project objectives.
5. Soils used as Wall Backfill shall be a well graded, non-organic, granular soil meeting all Welded Wire Wall Specifications and Project Special Provisions for "Select Backfill for MSE Walls (Section 02832S)" and having the following gradation: 100% by weight passing the 4-inch sieve, 0% to 60% by weight passing the No. 40 sieve, and 0 to 15% by weight passing the No. 200 sieve. The material shall have a Plasticity Index less than 6 and meet electrochemical properties indicated in Welded Wire Wall Specifications. Gradations and material properties of candidate backfill materials proposed for use may be submitted to Geotechnical Design Systems for review and approval. Backfill not conforming to these specifications shall not be used without express, written permission of Geotechnical Design Systems. Wall Backfill shall be compacted to 95% of the maximum dry density, as determined by AASHTO T-180 (ASTM D-1557) compaction criteria. This is a more stringent compaction requirement than found in the Project Special Provisions (Section 3.1B10) for the wall backfill. Maximum lift thickness shall be 8 inches and shall be reduced, if necessary, to obtain specified density. Refer to Welded Wire Wall Specifications and Project Special Provisions.

6. Wall Facing Rock shall meet Project Special Provisions for Wire Enclosed Riprap (Section 02372M) and shall consist of a 4-inch to 6-inch rock with no more than 2 percent less than 4 inches. The material shall consist of durable, angular rock, and shall also comply with all electrochemical requirements and other requirements outlined in Welded Wire Wall Specifications and Project Special Provisions. Friable or fractured rock shall not be used. Wall Facing Rock is to be hand rodged to "refusal" in accordance with standard construction guidelines of Hilfiker Retaining Walls.

7. Geotextile shall consist of Mirafi 160N or equivalent.
8. The Geomembrane required over the top of the wall shall consist of a 30-mil thick HDPE or PVC geomembrane.
9. The surface of all walls, during and after construction, shall be graded to drain. No ponding or uncontrolled flowing water shall be allowed on or around any walls, at any time.
10. Contractor to provide fall protection for workers and equipment during construction in compliance with OSHA and any other applicable requirements. Owner shall also provide and maintain permanent fall protection as required by applicable building codes.
11. The wall subgrade shall be properly prepared in accordance with Project Special Provisions. As a minimum, the subgrade shall be proofrolled by passing a heavy steel drum roller over the surface at least 4 times in accordance with welded wire wall specifications. All loose or disturbed soil, organic material, trash, disturbed or generally deleterious materials or unsuitable soils shall be removed. If soft or moist conditions are encountered, the Project Geotechnical Engineer shall provide appropriate recommendations with review by GDSI.
12. The walls have been designed for a 75-year life-span considering a site acceleration of 0.14 g. Deformation from the seismic event is projected to be 2 inches.
13. The following properties have been utilized in the wall design:
 Wall Backfill: Moist unit weight = 130 pcf, friction angle = 34 degrees
 Foundation and Retained Soils: Moist Unit Weight = 125 pcf, friction angle = 33 degrees
14. GDSI and Hilfiker Retaining Walls are responsible for internal and local external stability. Bearing capacity and global stability are the responsibility of the project geotechnical engineer. The foundation and retained soil parameters used in the wall design have been provided in the Project Special Provisions.



HRW Job No. 110811AW



HILFIKER RETAINING WALLS
 Eureka, CA Phone 707/443-5093 Fax 707/443-2891

DESIGNED BY: **BD**
 DRAWN BY: **LAJ**
 CHKD. BY: **BD**
 APPR. BY: **JB**

DATE: **Oct 12, 2011**
 CURRENT DATE: **Nov 01, 2011**

DESIGNED BY:
GEOTECHNICAL DESIGN SYSTEMS INC.
 885 E 4800 S, Ste. 140, Salt Lake City, Utah 84107
 (801)262-1942 phone/ 262-1943 fax

| REV. NO. | DATE | BY | DESCRIPTION |
|----------|----------|----|---|
| 1 | 11.01.11 | BD | Update mat sizes for available material |

THIS DRAWING IS FURNISHED SOLELY FOR THE USE OF OR IN CONNECTION WITH THIS PROJECT, AND THE PROPRIETARY INFORMATION SHOWN HEREON IS NOT TO BE TRANSMITTED TO ANY OTHER ORGANIZATION WITHOUT SPECIFIC AUTHORIZATION BY THE HILFIKER COMPANY. HILFIKER RETAINING WALLS ARE PROTECTED BY ONE OR MORE OF THE FOLLOWING PATENTS: 243,613; 243,697; 288,616; 4,117,096; 4,329,089; 4,324,508; 4,391,557; 4,505,621; 4,643,018; 4,661,023; 4,856,939; 5,076,335; 5,647,695; 5,727,789; 6,357,070 AND OTHERS. OTHER PATENTS PENDING (2004)

GENERAL NOTES
Welded Wire Retaining Walls
Red Hills Parkway - Bluff Street to Industrial Road
St. George, Utah

PROJECT NO:
11-03-42

SHEET NO:
WW 4.03