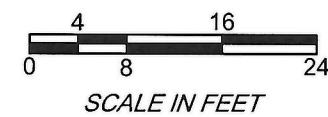


MSE WALL POINT LAYOUT DATA				
POINT ID	DESCRIPTION	PROJECT STA.	PROJECT STA. OFFSET	WLOL* STA.
①	BEGIN WEST WALL	4+70	78.5' LT	10+00
②	TP	3+26	78.5' LT	11+44
③	TP	3+10	62.5' LT	11+66.6
④	PC	3+10	32.5' RT	12+61.6
⑤	PT	3+56	78.5' RT	13+33.9
⑥	END WEST WALL	4+06.1	78.5' RT	13+84
⑦	BEGIN EAST WALL	3+09.8	73.9' RT	20+00
⑧	PT	3+56	94.5' RT	20+52.1
⑨	TP	5+18	94.5' RT	22+14.1
⑩	TP	5+18	94.5' LT	24+03.1
⑪	END EAST WALL	3+40.8	94.5' LT	25+80.3
⑫	BEGIN INFLUENT GABION WALL	4+03	94.5' RT	0+00
⑬	TP	4+03	108.5' RT	0+14
⑭	TP	4+25	108.5' RT	0+36
⑮	END INFLUENT GABION WALL	4+25	94.5' LT	0+50

*WLOL = WALL LAYOUT LINE



NOTE: BASE DRAWINGS PROVIDED BY HILFIKER RETAINING WALLS.



Prepared for:

HILFIKER RETAINING WALLS
 1902 Hilfiaker Lens
 Eureka, CA 95503-5711
 TOLL-FREE 800.762.8962
 PH 707.443.5093 FAX 707.443.2891
 WEB SITE www.hilfiaker.com E-MAIL info@hilfiaker.com

THIS DRAWING IS FURNISHED SOLELY FOR THE USE OF OR IN CONNECTION WITH THIS PROJECT, AND THE PROPRIETARY INFORMATION SHOWN HEREON IS NOT TO BE TRANSMITTED TO ANY OTHER ORGANIZATION WITHOUT SPECIFIC AUTHORIZATION BY THE HILFIKER COMPANY. HILFIKER RETAINING WALLS ARE PROTECTED BY ONE OR MORE OF THE FOLLOWING PATENTS: 2,433,613; 2,433,607; 2,886,616; 4,117,886; 4,329,089; 4,324,508; 4,311,537; 4,505,621; 4,643,618; 4,661,023; 4,856,939; 5,018,335; 5,847,095; 5,772,799; 5,957,700 AND OTHERS' OTHER PATENTS PENDING (2004)

Prepared by: **American Geotechnics**
 5260 Chinden Boulevard
 Boise, Idaho 83714
 (208) 658-8700 Fax (208) 658-8703

Situational Layout
 MSE Walls; Middleton WWTP
 Middleton, Idaho

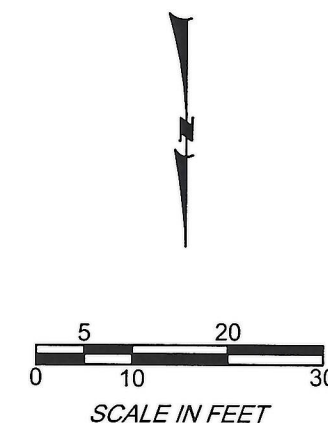
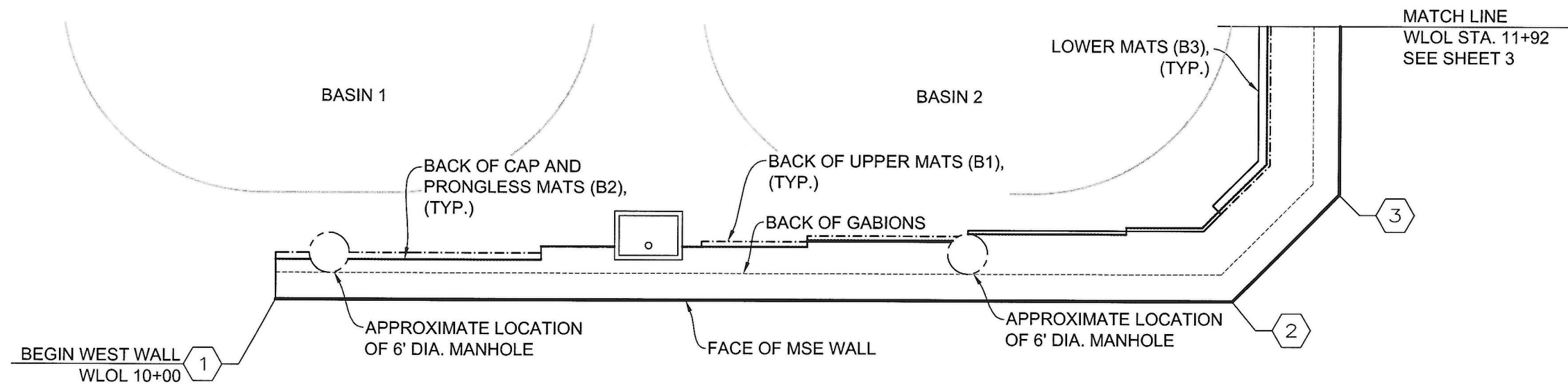
File No.
 11B-G2265

November 28, 2012

Sheet 1 of 13

AMERICAN
GEO
TECHNICS

11B-G2265 Middleton WWTP MSE, as Prepared 11-26-2012.dwg
 11/28/2012 1:14 PM
 J. Aaron Jensen, American Geotechnics

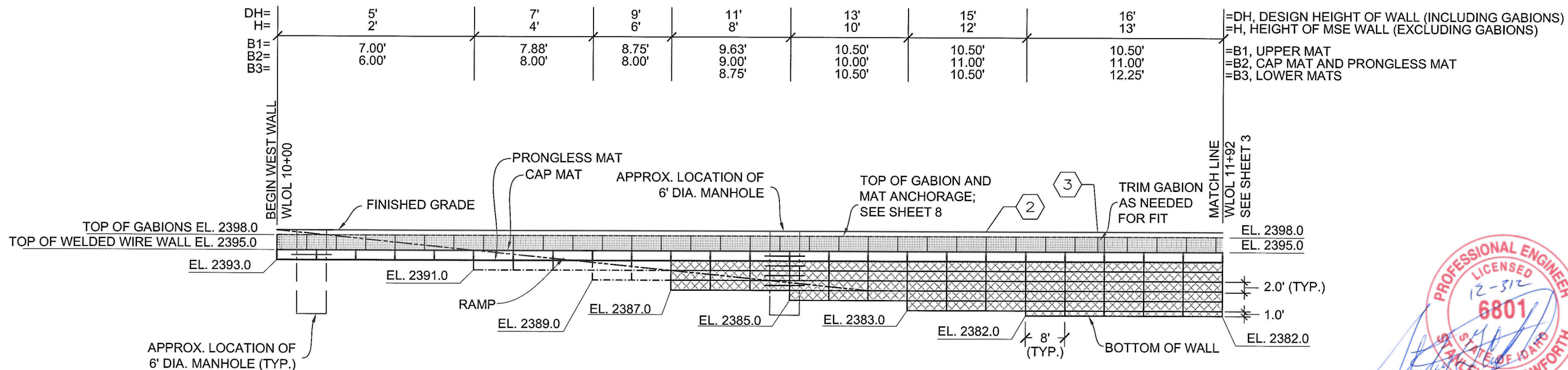


PLAN VIEW
GRAPHIC SCALE

QUANTITY NOTE:

TOTAL 1512 SF WELDED WIRE AT FACE OF WEST WALL

TOTAL 85 CY GABION AT WEST WALL



ELEVATION - WEST WALL
GRAPHIC SCALE FRONT FACE

LEGEND

- B1 - 8"x10.5", W4.5xW3.5-U
- B2 - 8"x12", W4.5xW3.5-U
- B3 - 8"x21", W7xW4-U
- 6'x4'x3' GABION
- WLOL WALL LAYOUT LINE

Prepared for:

HILFIKER RETAINING WALLS
 1902 Hilfiker Lane
 Eureka, CA 95503-5711
 TOLL-FREE 800.762.8962
 PH 707.443.5093 FAX 707.443.2891
 WEB SITE www.hilfiker.com E-MAIL info@hilfiker.com

THIS DRAWING IS FURNISHED SOLELY FOR THE USE OF OR IN CONNECTION WITH THIS PROJECT, AND THE PROPRIETARY INFORMATION SHOWN HEREON IS NOT TO BE TRANSMITTED TO ANY OTHER ORGANIZATION WITHOUT SPECIFIC AUTHORIZATION BY THE HILFIKER COMPANY. HILFIKER RETAINING WALLS ARE PROTECTED BY ONE OR MORE OF THE FOLLOWING PATENTS: 243,613, 243,997, 288,818, 4,117,886, 4,329,089, 4,324,508, 4,391,557, 4,505,821, 4,643,618, 4,661,023, 4,856,939, 5,076,755, 5,647,698, 5,722,789, 6,367,870 AND OTHERS. OTHER PATENTS PENDING (2004)

Prepared by:

American Geotechnics
 5260 Chinden Boulevard
 Boise, Idaho 83714
 (208) 658-8700 Fax (208) 658-8703

Plan and Elevation - West Wall
 MSE Walls-Middleton WWTP
 Middleton, Idaho

File No.
 11B-G2265

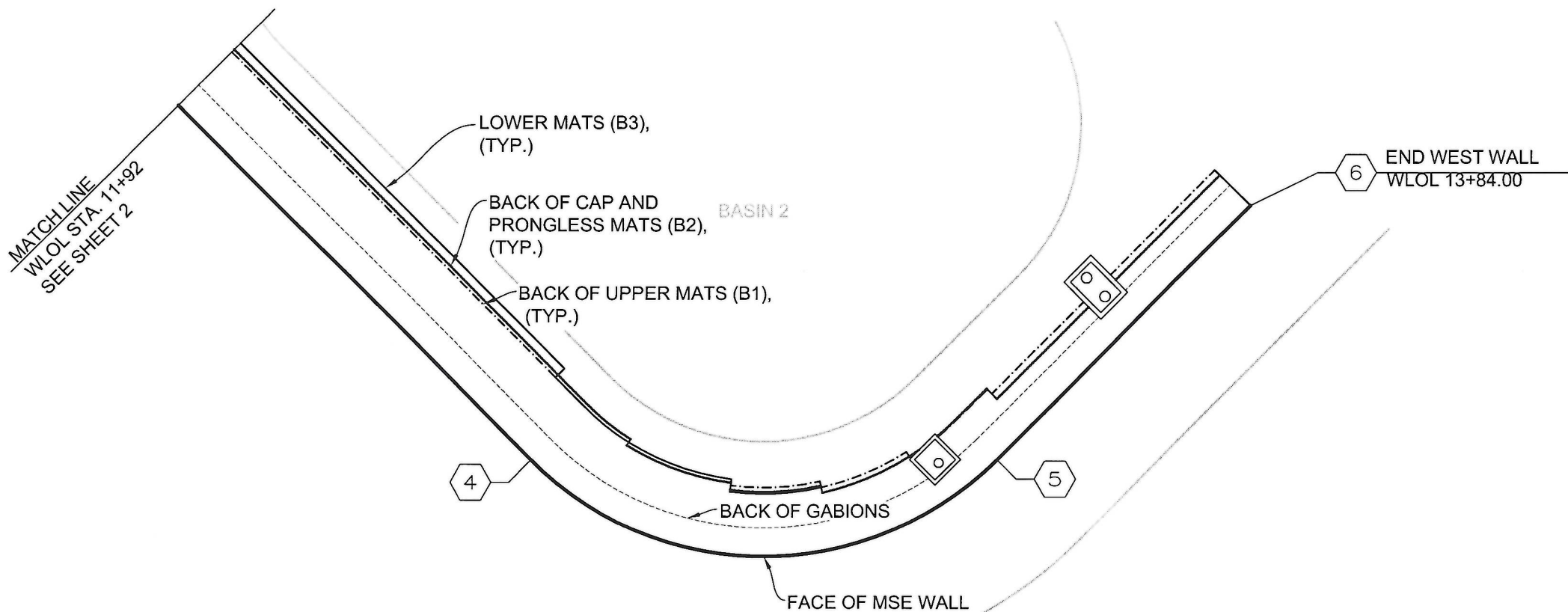
November 28, 2012

Sheet 2 of 13

**AMERICAN
 GEO
 TECHNICS**



11/28/2012 1:14 PM 11B-G2265 Middleton WWTP MSE - B Prepared 11-26-2012.dwg J. Aaron Jensen, American Geotechnics

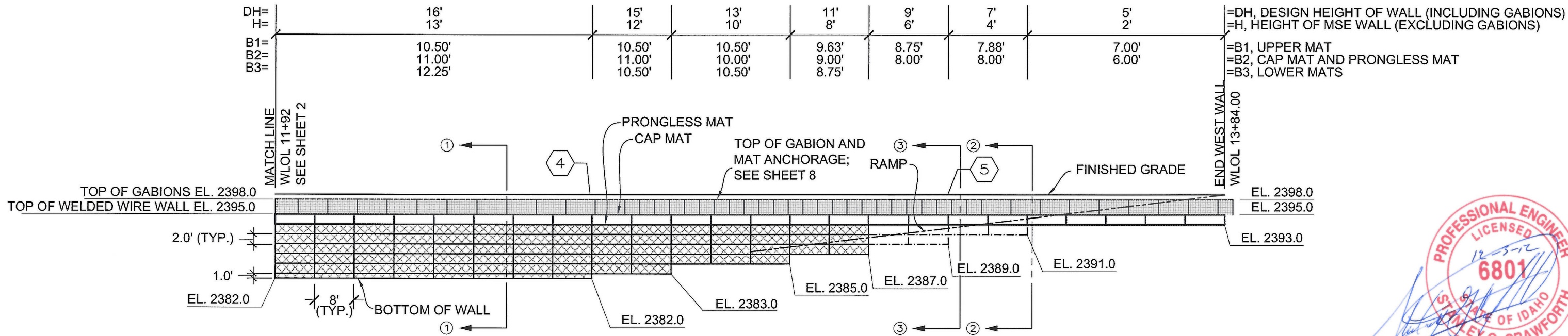


QUANTITY NOTE:

TOTAL 1632 SF WELDED WIRE AT FACE OF WEST WALL

TOTAL 85 CY GABION AT WEST WALL

PLAN VIEW
GRAPHIC SCALE



ELEVATION - WEST WALL CONT'D
GRAPHIC SCALE
FRONT FACE

LEGEND

- B1 - 8"x10.5", W4.5xW3.5-U
- B2 - 8"x12", W4.5xW3.5-U
- B3 - 8"x21", W7xW4-U
- 6'x4'x3' GABION
- WLOL WALL LAYOUT LINE

Prepared for:

HILFIKER RETAINING WALLS
 1902 Hilfiiker Lane
 Eureka, CA 95503-5711
 TOLL-FREE 800.762.8962
 PH 707.443.5093 FAX 707.443.2891
 WEB SITE www.hilfiiker.com EMAIL info@hilfiiker.com

THIS DRAWING IS FURNISHED SOLELY FOR THE USE OF OR IN CONNECTION WITH THIS PROJECT, AND THE PROPRIETARY INFORMATION SHOWN HEREON IS NOT TO BE TRANSMITTED TO ANY OTHER ORGANIZATION WITHOUT SPECIFIC AUTHORIZATION BY THE HILFIKER COMPANY. HILFIKER RETAINING WALLS ARE PROTECTED BY ONE OR MORE OF THE FOLLOWING PATENTS: 2,433,013; 2,433,097; 2,888,016; 4,117,886; 4,329,089; 4,324,508; 4,391,557; 4,505,821; 4,643,818; 4,681,023; 4,858,939; 5,078,735; 5,847,895; 5,722,799; 6,327,870 AND OTHERS. OTHER PATENTS PENDING (2004)

Prepared by:

American Geotechnics
 5260 Chinden Boulevard
 Boise, Idaho 83714
 (208) 658-8700 Fax (208) 658-8703

Plan and Elevation - West Wall
 MSE Walls-Middleton WWTP
 Middleton, Idaho

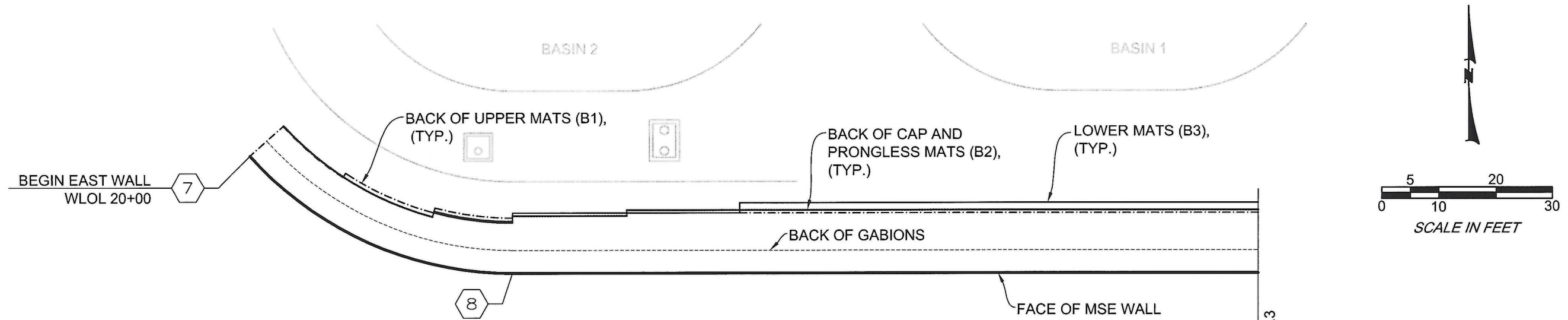
File No.
 11B-G2265

November 28, 2012

Sheet 3 of 13



11B-G2265 Middleton WWTP MSE - 03 Perennial 11-28-2012.dwg
 J. Anna Jensen, American Geotechnics
 11/28/2012 1:14 PM



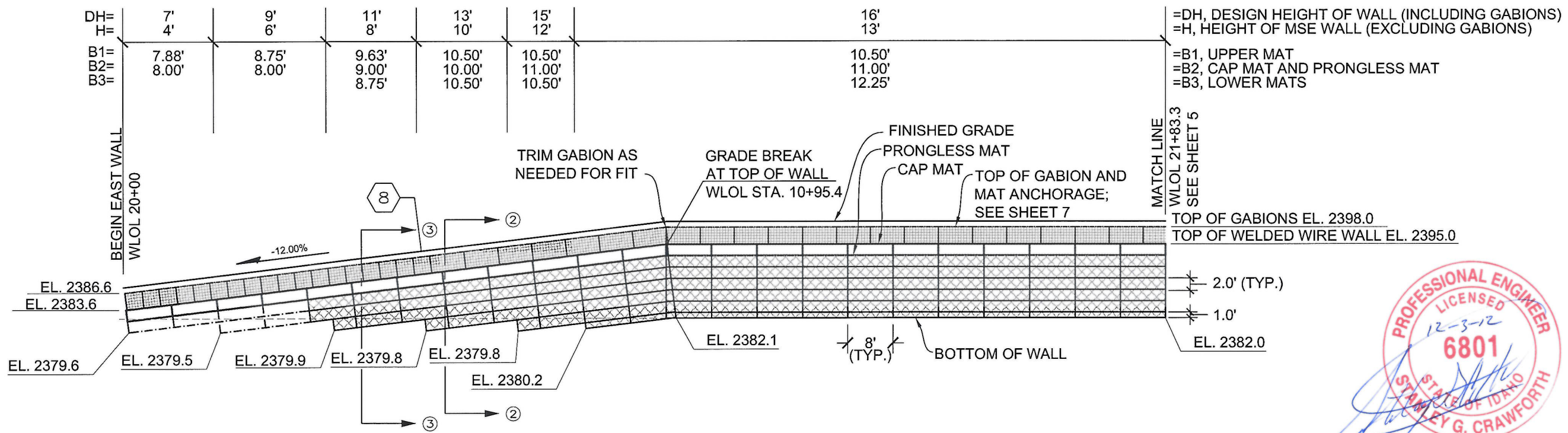
PLAN VIEW
GRAPHIC SCALE

QUANTITY NOTE:

TOTAL 1968 SF WELDED WIRE AT FACE OF WEST WALL

TOTAL 82 CY GABION AT WEST WALL

MATCHLINE
WLOL STA. 21+83.3
SEE SHEET 5



ELEVATION - EAST WALL
GRAPHIC SCALE FRONT FACE

MATCHLINE
WLOL 21+83.3
SEE SHEET 5

TOP OF GABIONS EL. 2398.0
TOP OF WELDED WIRE WALL EL. 2395.0



- LEGEND
- B1 - 8"x10.5", W4.5xW3.5-U
 - B2 - 8"x12", W4.5xW3.5-U
 - B3 - 8"x21", W7xW4-U
 - 6'x4'x3' GABION
 - WLOL WALL LAYOUT LINE

Prepared for:

HILFIKER RETAINING WALLS

 1902 Hilfiker Lane
 Eureka, CA 95503-5711
 TOLL-FREE 800.762.8962
 PH 707.443.5093 FAX 707.443.2891
 WEBSITE www.hilfiker.com E-MAIL info@hilfiker.com

THIS DRAWING IS FURNISHED SOLELY FOR THE USE OF OR IN CONNECTION WITH THIS PROJECT, AND THE PROPRIETARY INFORMATION SHOWN HEREON IS NOT TO BE TRANSMITTED TO ANY OTHER ORGANIZATION WITHOUT SPECIFIC AUTHORIZATION BY THE HILFIKER COMPANY. HILFIKER RETAINING WALLS ARE PROTECTED BY ONE OR MORE OF THE FOLLOWING PATENTS: 243,613, 243,697, 288,616, 4,117,656, 4,329,089, 4,324,508, 4,391,557, 4,509,621, 4,643,818, 4,661,023, 4,856,939, 5,076,735, 5,847,895, 5,722,796, 6,357,870 AND OTHERS. OTHER PATENTS PENDING (2004)

Prepared by: **American Geotechnics**
 5260 Chinden Boulevard
 Boise, Idaho 83714
 (208) 658-8700 Fax (208) 658-8703

Plan and Elevation - East Wall
 MSE Walls-Middleton WWTP
 Middleton, Idaho

File No.
 11B-G2265

November 28, 2012

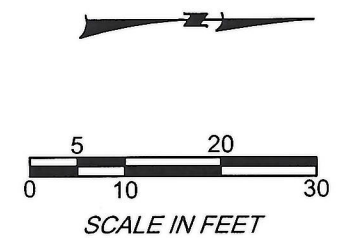
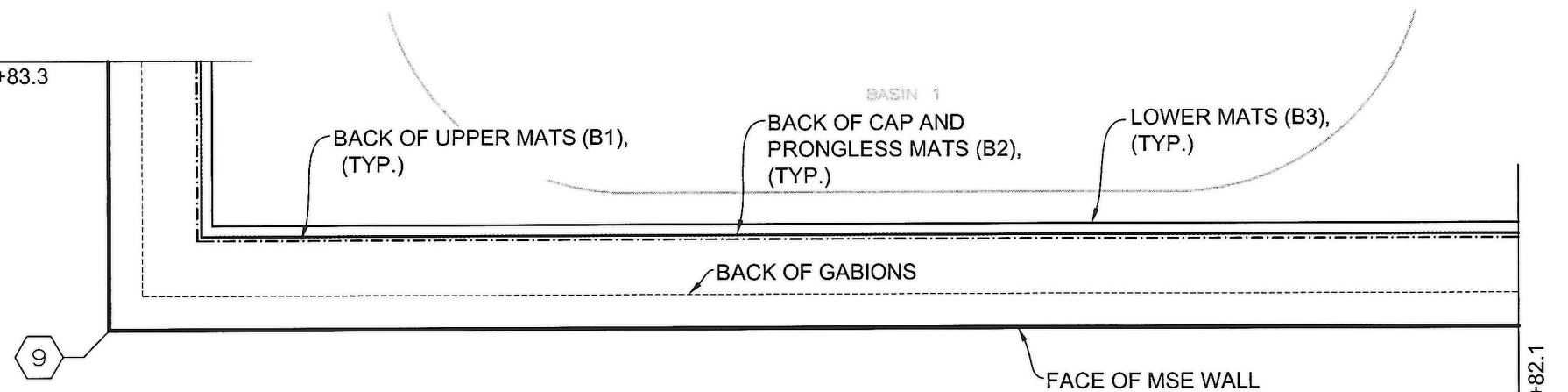
Sheet 4 of 13

AMERICAN

TECHNICS

11B-G2265 Middleton WWTP MSE - Prepared 11-26-2012.dwg

MATCH LINE
WLOL STA. 21+83.3
SEE SHEET 4

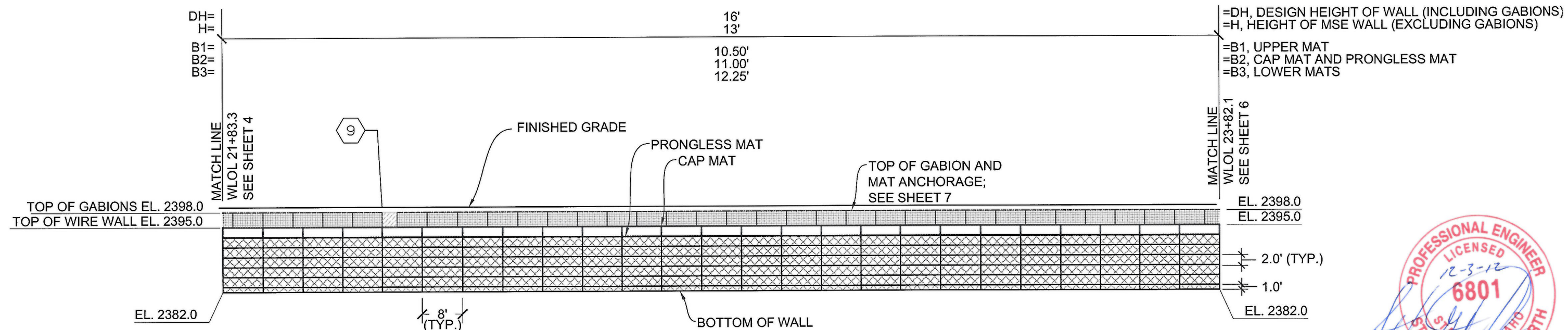


PLAN VIEW
GRAPHIC SCALE

QUANTITY NOTE:

TOTAL 2600 SF WELDED WIRE AT FACE OF EAST WALL

TOTAL 88 CY GABIONS AT EAST WALL



ELEVATION - EAST WALL CONT'D
GRAPHIC SCALE FRONT FACE

LEGEND

- B1 - 8"x10.5", W4.5xW3.5-U
- B2 - 8"x12", W4.5xW3.5-U
- B3 - 8"x21", W7xW4-U
- 6'x4'x3' GABION
- WLOL WALL LAYOUT LINE

Prepared for:

HILFIKER RETAINING WALLS

 1902 Hilfiker Lane
 Eureka, CA 95503-5711
 TOLL-FREE 800.762.8962
 PH 707.443.5093 FAX 707.443.2891
 WEBSITE www.hilfiker.com E-MAIL info@hilfiker.com

THIS DRAWING IS FURNISHED SOLELY FOR THE USE OF OR IN CONNECTION WITH THIS PROJECT, AND THE PROPRIETARY INFORMATION SHOWN HEREON IS NOT TO BE TRANSMITTED TO ANY OTHER ORGANIZATION WITHOUT SPECIFIC AUTHORIZATION BY THE HILFIKER COMPANY. HILFIKER RETAINING WALLS ARE PROTECTED BY ONE OR MORE OF THE FOLLOWING PATENTS: 243,613, 243,697, 268,616, 4,117,686, 4,329,089, 4,324,508, 4,391,557, 4,305,821, 4,843,615, 4,861,023, 4,856,939, 5,078,735, 5,847,895, 5,722,799, 6,357,870 AND OTHERS. OTHER PATENTS PENDING (2004)

Prepared by:

American Geotechnics
 5260 Chinden Boulevard
 Boise, Idaho 83714
 (208) 658-8700 Fax (208) 658-8703

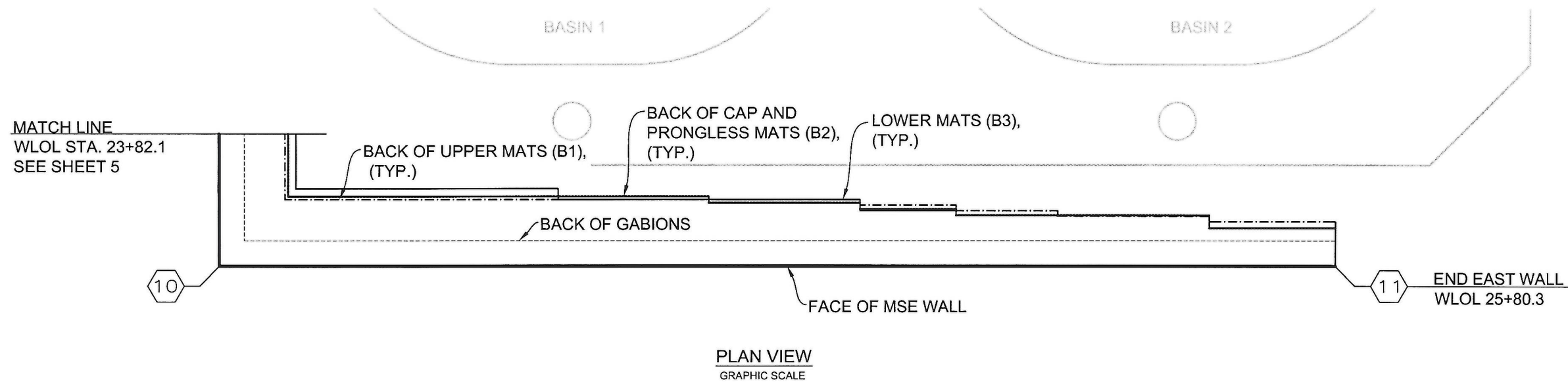
Plan and Elevation - East Wall
 MSE Walls-Middleton WWTP
 Middleton, Idaho

File No.
 11B-G2265

November 28, 2012

Sheet 5 of 13

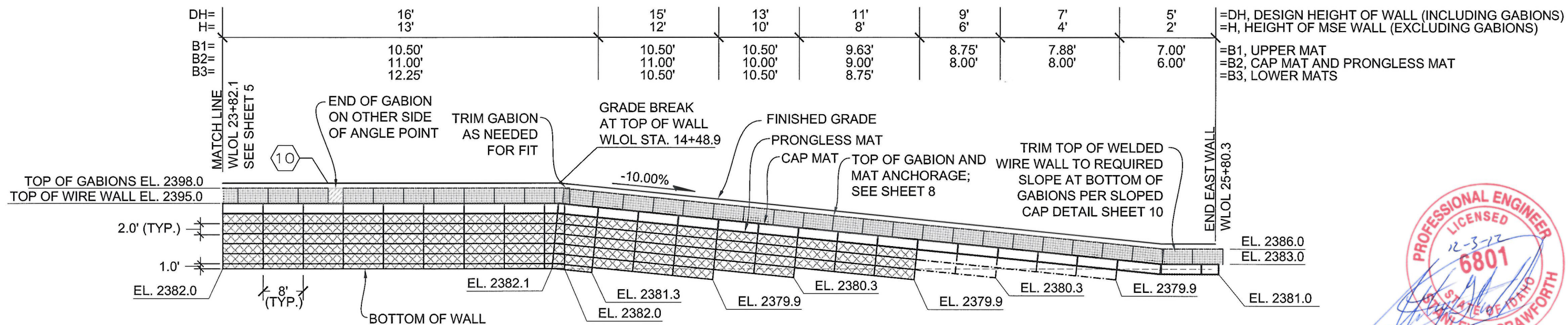




QUANTITY NOTE:

TOTAL 1860 SF WELDED WIRE AT FACE OF EAST WALL

TOTAL 88 CY GABIONS AT EAST WALL



LEGEND

- B1 - 8"x10.5", W4.5xW3.5-U
- B2 - 8"x12", W4.5xW3.5-U
- B3 - 8"x21", W7xW4-U
- 6'x4'x3' GABION
- WLOL WALL LAYOUT LINE

Prepared for:

HILFIKER RETAINING WALLS
 1902 Hilfiker Lane
 Eureka, CA 95503-5711
 TOLL-FREE 800.762.8962
 PH 707.443.5093 FAX 707.443.2891
 © WEBSITE www.hilfiker.com EMAIL info@hilfiker.com

THIS DRAWING IS FURNISHED SOLELY FOR THE USE OF OR IN CONNECTION WITH THIS PROJECT, AND THE PROPRIETARY INFORMATION SHOWN HEREON IS NOT TO BE TRANSMITTED TO ANY OTHER ORGANIZATION WITHOUT SPECIFIC AUTHORIZATION BY THE HILFIKER COMPANY. HILFIKER RETAINING WALLS ARE PROTECTED BY ONE OR MORE OF THE FOLLOWING PATENTS: 2,433,813; 2,433,897; 2,888,816; 4,117,888; 4,329,089; 4,324,508; 4,391,557; 4,505,821; 4,643,618; 4,981,023; 4,958,939; 5,078,735; 5,847,695; 5,724,790; 6,357,870 AND OTHERS. OTHER PATENTS PENDING (2004)

Prepared by:

American Geotechnics
 5260 Chinden Boulevard
 Boise, Idaho 83714
 (208) 658-8700 Fax (208) 658-8703

Plan and Elevation - East Wall
 MSE Walls-Middleton WWTP
 Middleton, Idaho

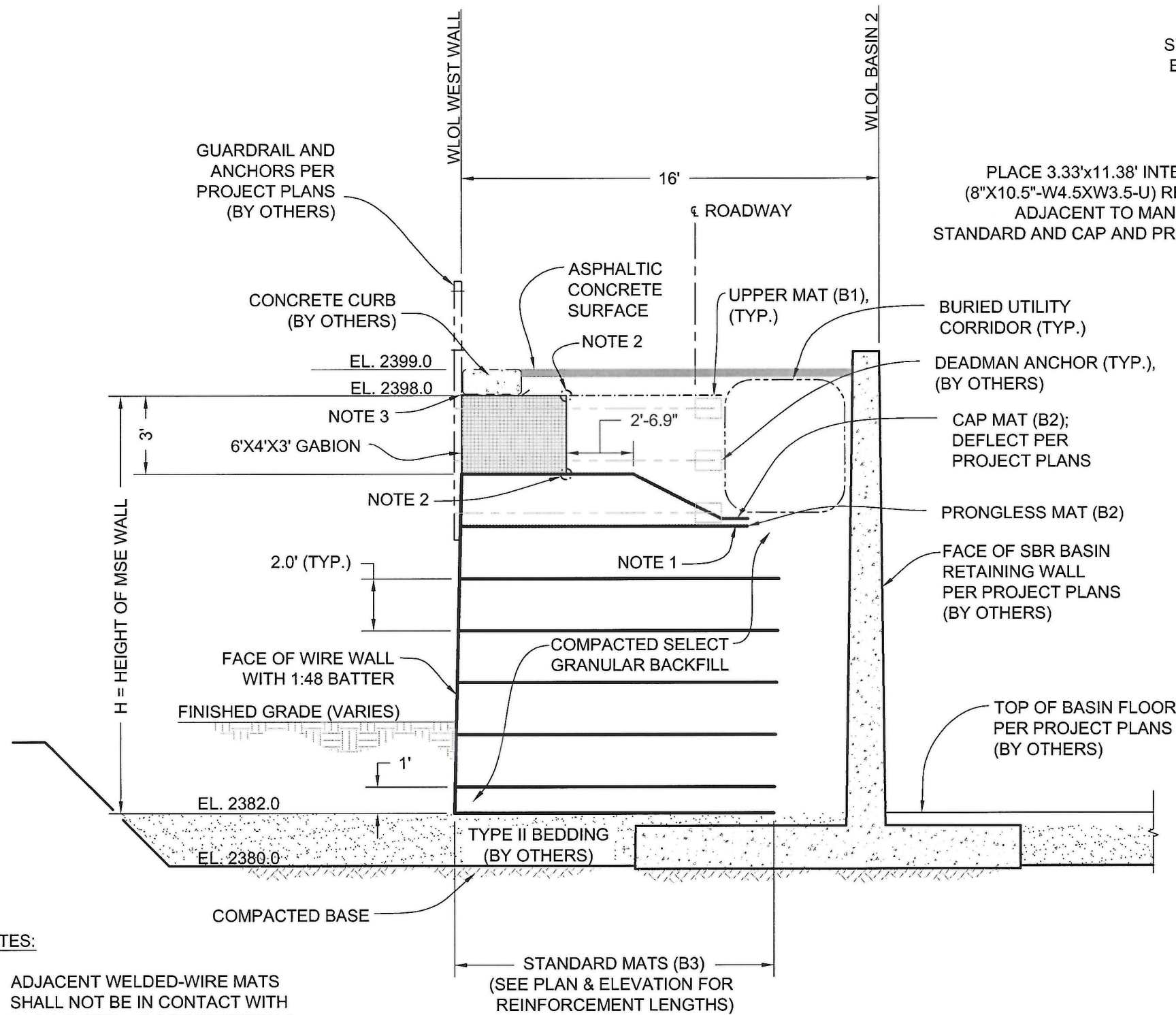
File No.
 11B-G2265

November 28, 2012

Sheet 6 of 13

**AMERICAN
 GEO
 TECHNICS**





WALL SECTION 1 - 1

NOTES:

1. ADJACENT WELDED-WIRE MATS SHALL NOT BE IN CONTACT WITH EACH OTHER. PLACE BETWEEN 2 TO 3 INCHES OF COMPACTED MSE BACKFILL BETWEEN ADJACENT MATS.
2. CONTINUOUS 9 GAGE SPIRAL TIES PROVIDED BY THE WALL SUPPLIER.
3. PLACE 6 OZ. NON-WOVEN POLYPROPYLENE GEOTEXTILE FABRIC BETWEEN CONCRETE CURB AND GABIONS. DO NOT CAST CONCRETE CURB INTEGRALLY WITH GABIONS.

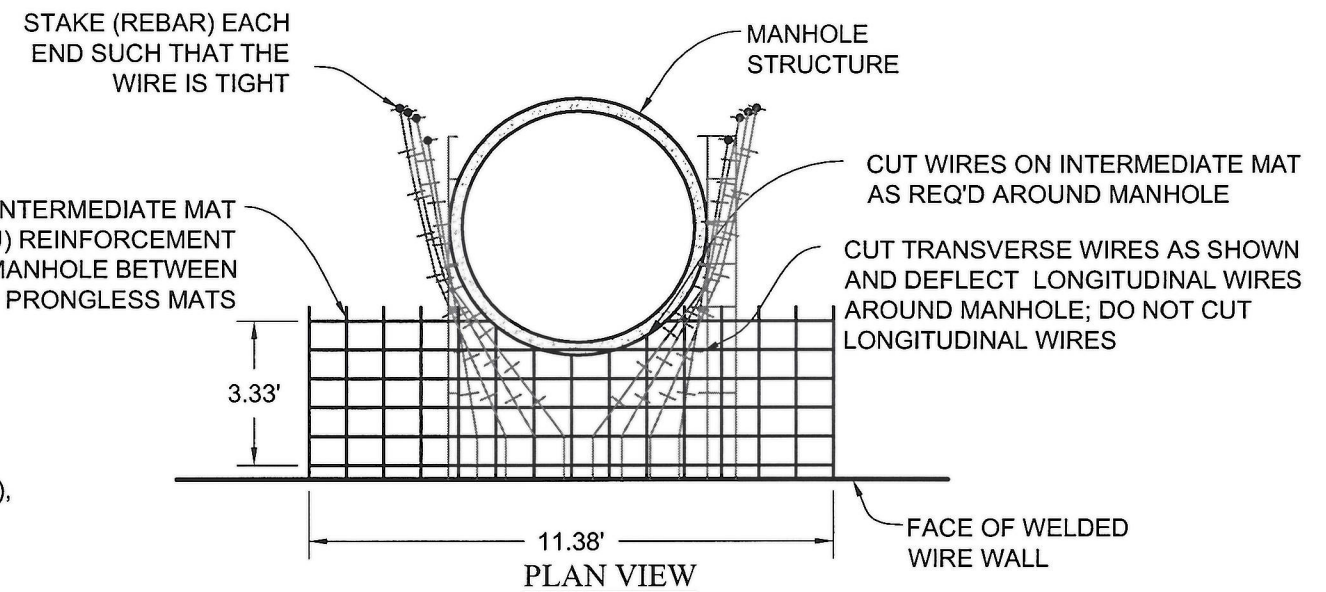
Prepared for:



THIS DRAWING IS FURNISHED SOLELY FOR THE USE OF OR IN CONNECTION WITH THIS PROJECT, AND THE PROPRIETARY INFORMATION SHOWN HEREIN IS NOT TO BE TRANSMITTED TO ANY OTHER ORGANIZATION WITHOUT SPECIFIC AUTHORIZATION BY THE HILFIKER COMPANY. HILFIKER RETAINING WALLS ARE PROTECTED BY ONE OR MORE OF THE FOLLOWING PATENTS: 243,613, 243,697, 288,618, 4,117,688, 4,329,089, 4,324,508, 4,381,557, 4,305,621, 4,943,618, 4,961,023, 4,959,939, 5,076,735, 5,847,895, 5,727,799, 6,357,870 AND OTHERS. OTHER PATENTS PENDING (2004)

Prepared by:

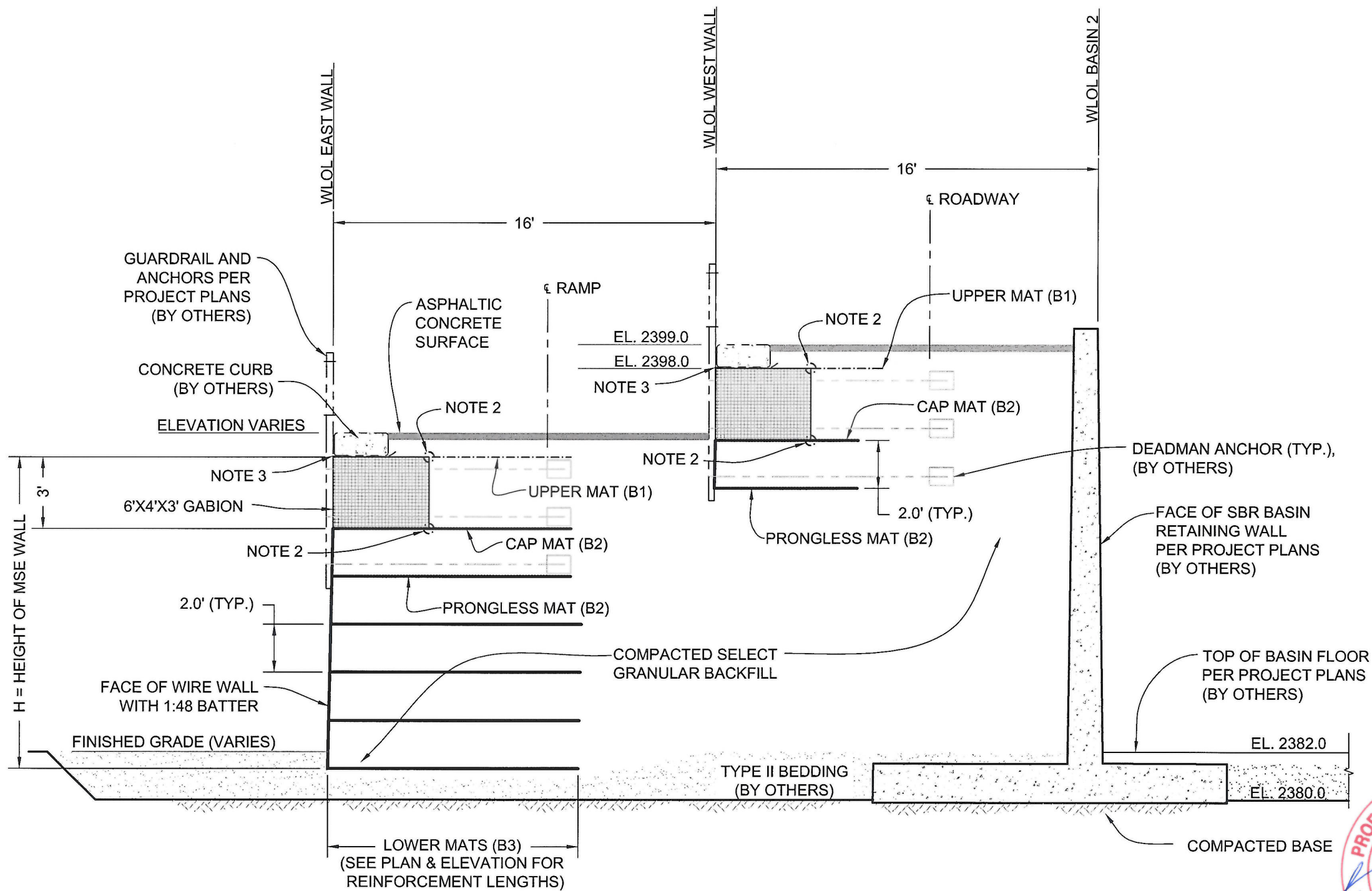
American Geotechnics
5260 Chinden Boulevard
Boise, Idaho 83714
(208) 658-8700 Fax (208) 658-8703



REINFORCEMENT ADJACENT TO MANHOLE - SECTION



Typical Section 1 MSE Walls-Middleton WWTP Middleton, Idaho		Sheet 7 of 13 A M E R I C A N G E O T E C H N I C S
File No. 11B-G2265	November 28, 2012	



NOTES:

1. ADJACENT WELDED-WIRE MATS SHALL NOT BE IN CONTACT WITH EACH OTHER. PLACE BETWEEN 2 TO 3 INCHES OF COMPACTED MSE BACKFILL BETWEEN ADJACENT MATS.
2. CONTINUOUS 9 GAGE SPIRAL TIES PROVIDED BY THE WALL SUPPLIER.
3. PLACE 6 OZ. NON-WOVEN POLYPROPYLENE GEOTEXTILE FABRIC BETWEEN CONCRETE CURB AND GABIONS. DO NOT CAST CONCRETE CURB INTEGRALLY WITH GABIONS.

Prepared for:

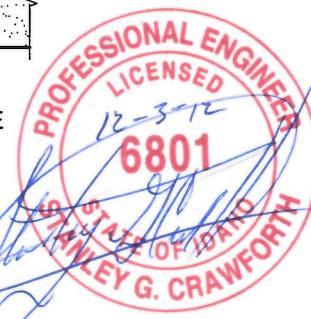


THIS DRAWING IS FURNISHED SOLELY FOR THE USE OF OR IN CONNECTION WITH THIS PROJECT, AND THE PROPRIETARY INFORMATION SHOWN HEREON IS NOT TO BE TRANSMITTED TO ANY OTHER ORGANIZATION WITHOUT SPECIFIC AUTHORIZATION BY THE HILFIKER COMPANY. HILFIKER RETAINING WALLS ARE PROTECTED BY ONE OR MORE OF THE FOLLOWING PATENTS: 243,813, 243,897, 288,616, 4,117,886, 4,329,089, 4,324,508, 4,391,557, 4,505,821, 4,643,618, 4,681,023, 4,856,939, 5,078,735, 5,847,693, 5,722,799, 6,357,870 AND OTHERS. OTHER PATENTS PENDING (2004)

Prepared by:

American Geotechnics
 5260 Chinden Boulevard
 Boise, Idaho 83714
 (208) 658-8700 Fax (208) 658-8703

WALL SECTION 2 - 2



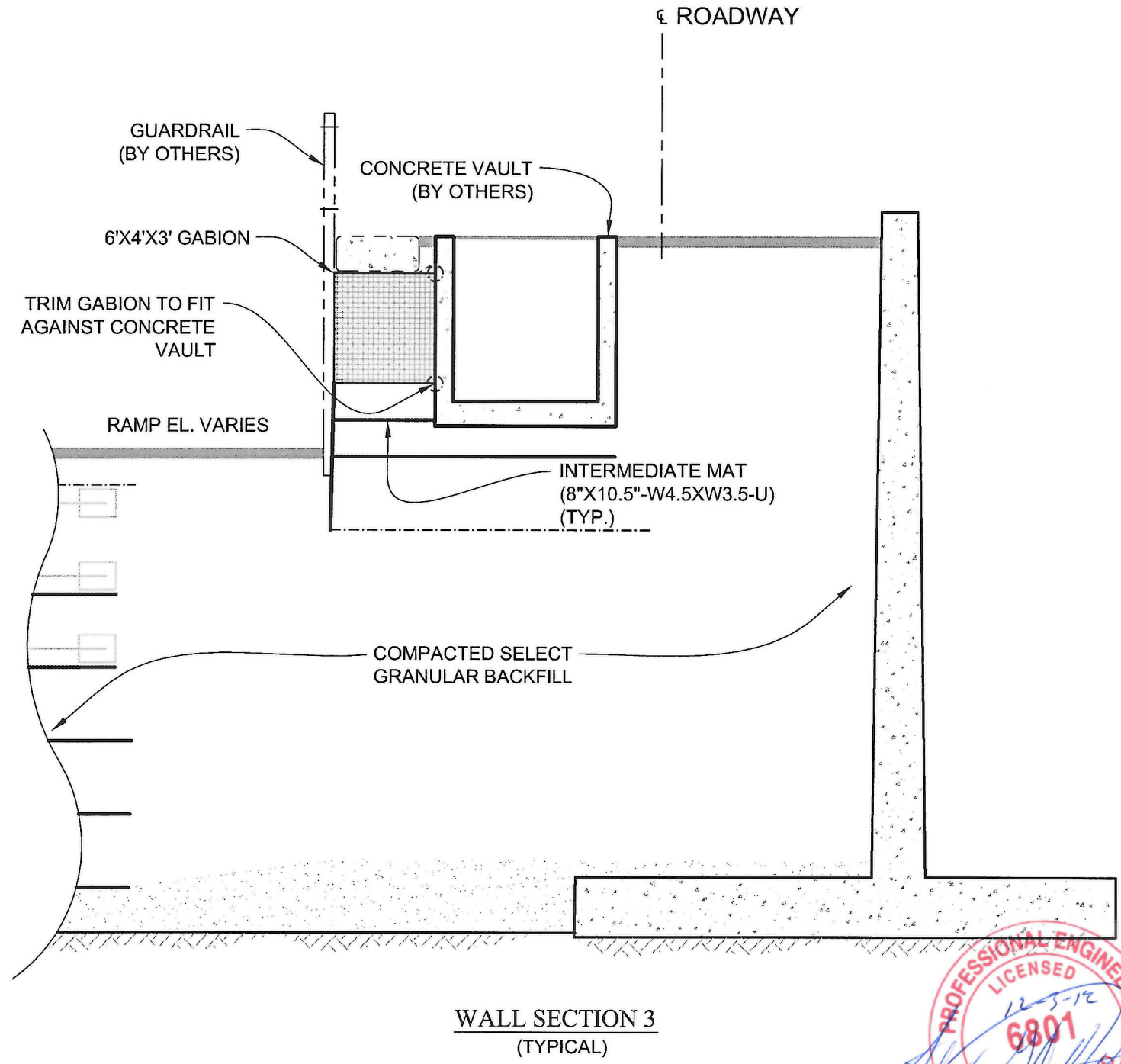
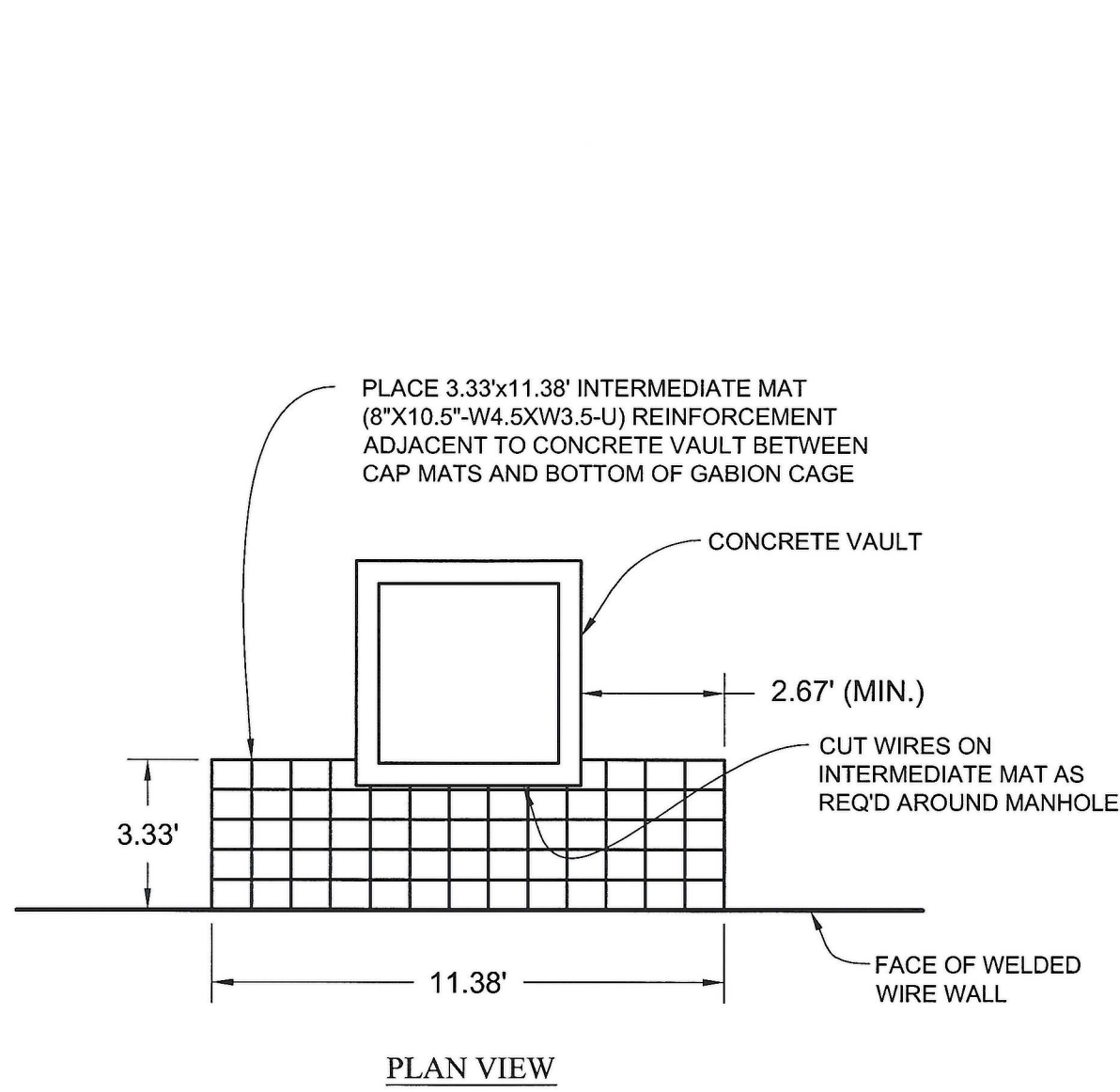
Typical Section 2
 MSE Walls-Middleton WWTP
 Middleton, Idaho

Sheet 8 of 13



File No. 11B-G2265

November 28, 2012



PROFESSIONAL ENGINEER
 LICENSED
 12-5-12
 6801
 STATE OF IDAHO
 STANLEY G. CRAWFORTH

Prepared for:

HILFIKER RETAINING WALLS

HW

1902 Hilliker Lane
 Eureka, CA 95503-5711
 TOLL-FREE 800.762.8962
 PH 707.443.5093 FAX 707.443.2891
 © WEBSITE www.hilfiker.com E-MAIL info@hilfiker.com

1902

THIS DRAWING IS FURNISHED SOLELY FOR THE USE OF OR IN CONNECTION WITH THIS PROJECT, AND THE PROPRIETARY INFORMATION SHOWN HEREON IS NOT TO BE TRANSMITTED TO ANY OTHER ORGANIZATION WITHOUT SPECIFIC AUTHORIZATION BY THE HILFIKER COMPANY. HILFIKER RETAINING WALLS ARE PROTECTED BY ONE OR MORE OF THE FOLLOWING PATENTS: 2,435,815, 2,435,817, 2,888,618, 4,117,866, 4,329,089, 4,324,508, 4,381,557, 4,508,821, 4,643,819, 4,681,023, 4,858,939, 5,078,735, 5,847,895, 5,722,789, 6,357,870 AND OTHERS. OTHER PATENTS PENDING (2004)

Prepared by: **American Geotechnics**
 5260 Chinden Boulevard
 Boise, Idaho 83714
 (208) 658-8700 Fax (208) 658-8703

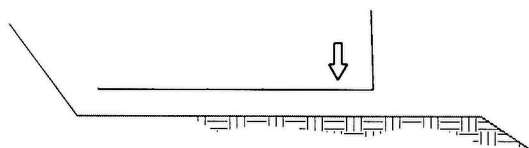
Typical Section 3 MSE Walls-Middleton WWTP Middleton, Idaho	
File No. 11B-G2265	November 28, 2012

Sheet 9 of 13

A M E R I C A N
GO
T E C H N I C S

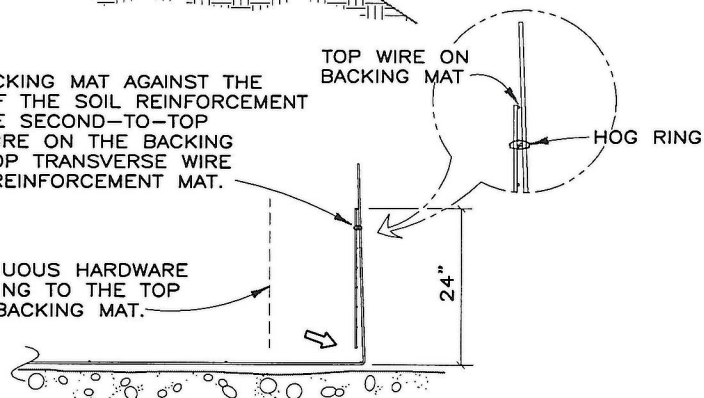
J. Anna Jensen, American Geotechnics 11/28/2012 1:14 PM 11B-G2265 Middleton WWTP MSE-13 Proposed 11-28-2012.dwg

STEP 1
PLACE THE FIRST COURSE OF SOIL REINFORCEMENT MATS ON PREPARED FOUNDATION



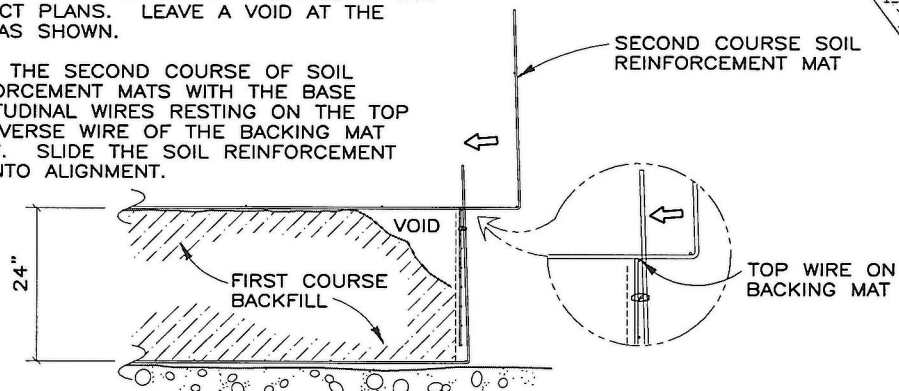
STEP 2
PLACE THE BACKING MAT AGAINST THE INSIDE FACE OF THE SOIL REINFORCEMENT MAT. CLIP THE SECOND-TO-TOP TRANSVERSE WIRE ON THE BACKING MAT TO THE TOP TRANSVERSE WIRE ON THE SOIL REINFORCEMENT MAT.

INSTALL CONTINUOUS HARDWARE CLOTH, HOG-RING TO THE TOP WIRE ON THE BACKING MAT.

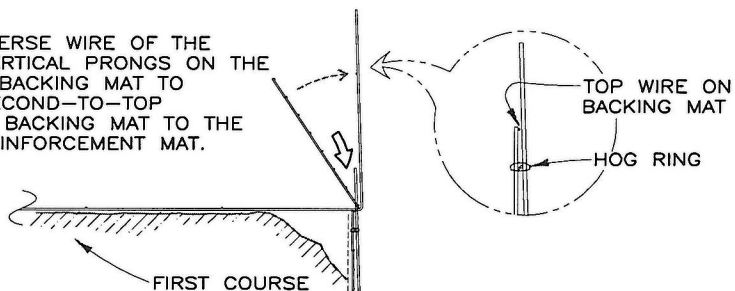


STEP 3
PLACE AND COMPACT THE BACKFILL IN LAYERS AND DENSITIES AS SPECIFIED IN THE PROJECT PLANS. LEAVE A VOID AT THE FACE AS SHOWN.

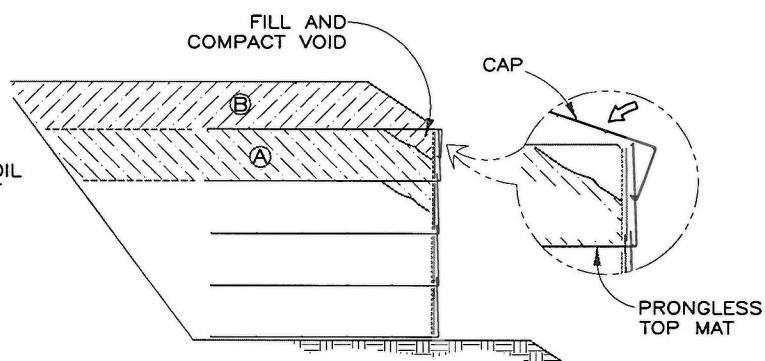
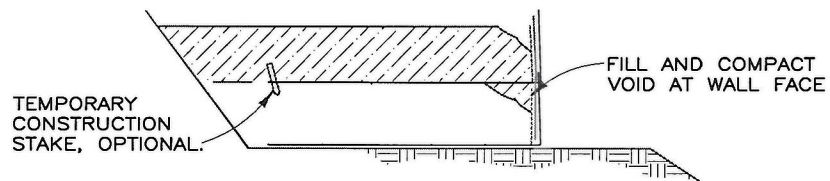
PLACE THE SECOND COURSE OF SOIL REINFORCEMENT MATS WITH THE BASE LONGITUDINAL WIRES RESTING ON THE TOP TRANSVERSE WIRE OF THE BACKING MAT BELOW. SLIDE THE SOIL REINFORCEMENT MAT INTO ALIGNMENT.



STEP 4
HOOK THE BOTTOM TRANSVERSE WIRE OF THE BACKING MAT OVER THE VERTICAL PRONGS ON THE LOWER MAT. ROTATE THE BACKING MAT TO VERTICAL AND CLIP THE SECOND-TO-TOP TRANSVERSE WIRE ON THE BACKING MAT TO THE TOP WIRE ON THE SOIL REINFORCEMENT MAT.

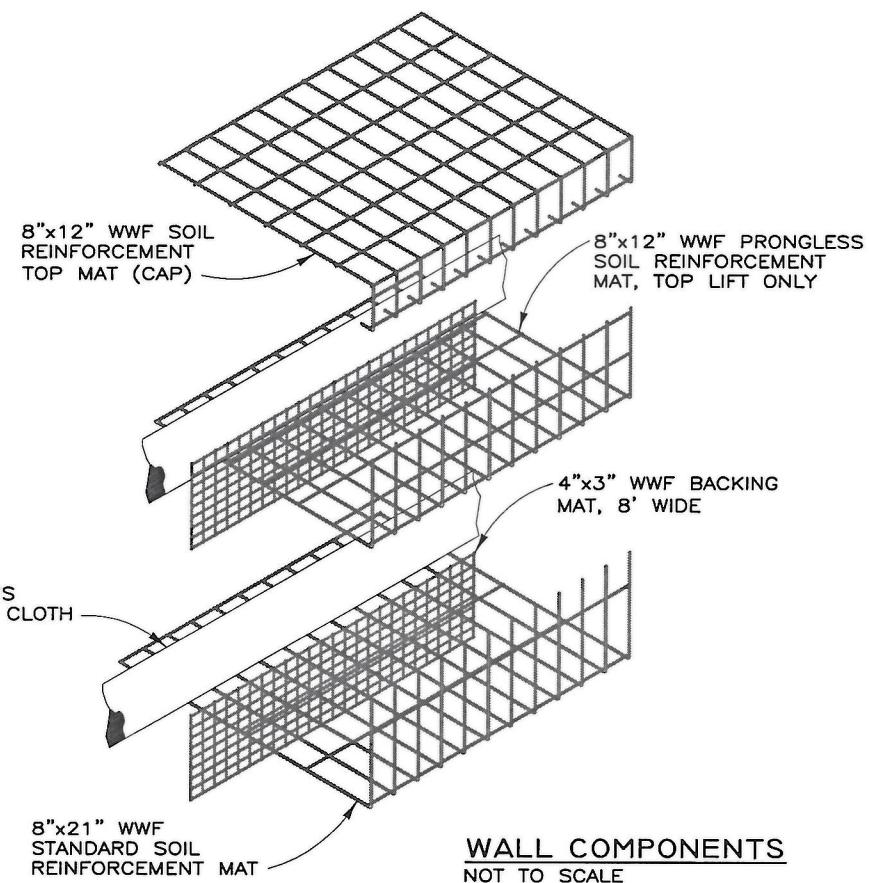


STEP 5
INSTALL THE CONTINUOUS HARDWARE CLOTH. PLACE AND COMPACT THE BACKFILL TO THE BASE ELEVATION OF THE NEXT MAT. REPEAT STEPS 3 THROUGH 5 TO THE TOP LIFT.

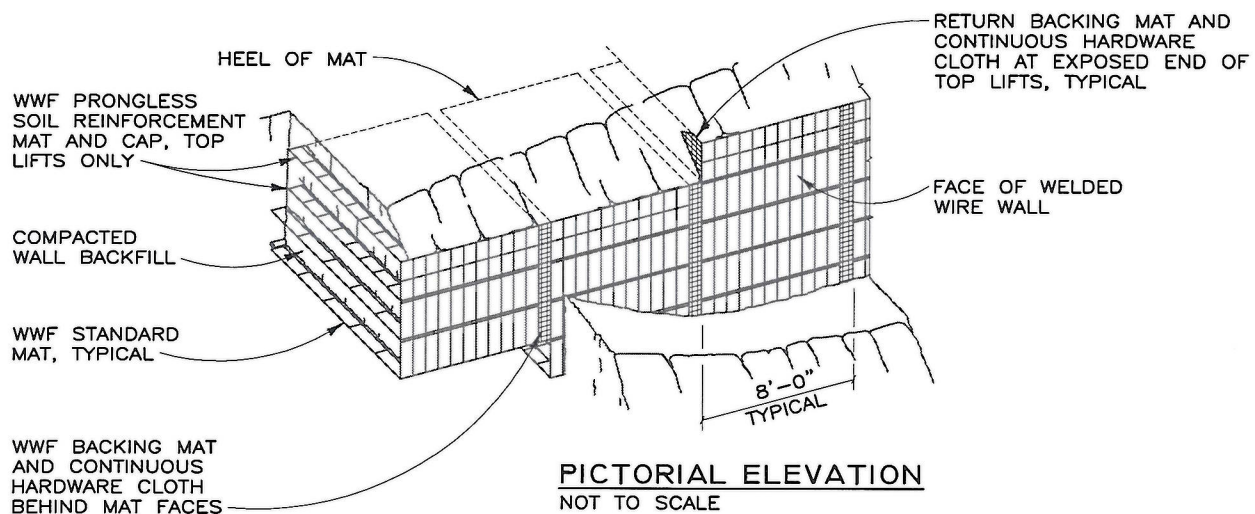


STEP 6: TOP LIFT
PLACE THE TOP LIFT PRONGLESS MAT, BACKING MAT AND CONTINUOUS HARDWARE CLOTH. PLACE AND COMPACT BACKFILL IN AREA "A". HOOK THE CAP OVER THE MIDDLE TRANSVERSE WIRE ON THE PRONGLESS MAT, AND ROTATE INTO PLACE. BACKFILL "B" TO 1'-6" MIN. COVER OVER THE CAP.

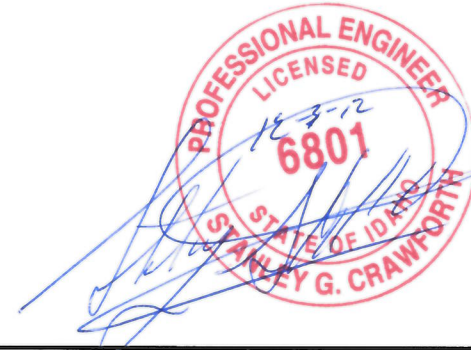
CONSTRUCTION SEQUENCE
NOT TO SCALE



WALL COMPONENTS
NOT TO SCALE



PICTORIAL ELEVATION
NOT TO SCALE



Prepared for:

HILFIKER RETAINING WALLS



THIS DRAWING IS FURNISHED SOLELY FOR THE USE OF OR IN CONNECTION WITH THIS PROJECT, AND THE PROPRIETARY INFORMATION SHOWN HEREON IS NOT TO BE TRANSMITTED TO ANY OTHER ORGANIZATION WITHOUT SPECIFIC AUTHORIZATION BY THE HILFIKER COMPANY. HILFIKER RETAINING WALLS ARE PROTECTED BY ONE OR MORE OF THE FOLLOWING PATENTS: 243,613, 243,697, 288,616, 4,117,886, 4,329,089, 4,324,508, 4,391,557, 4,505,821, 4,643,619, 4,681,023, 4,856,939, 5,078,735, 5,847,895, 5,722,789, 6,357,870 AND OTHERS. OTHER PATENTS PENDING (2004)

Prepared by:

American Geotechnics

5260 Chinden Boulevard
Boise, Idaho 83714
(208) 658-8700 Fax (208) 658-8703

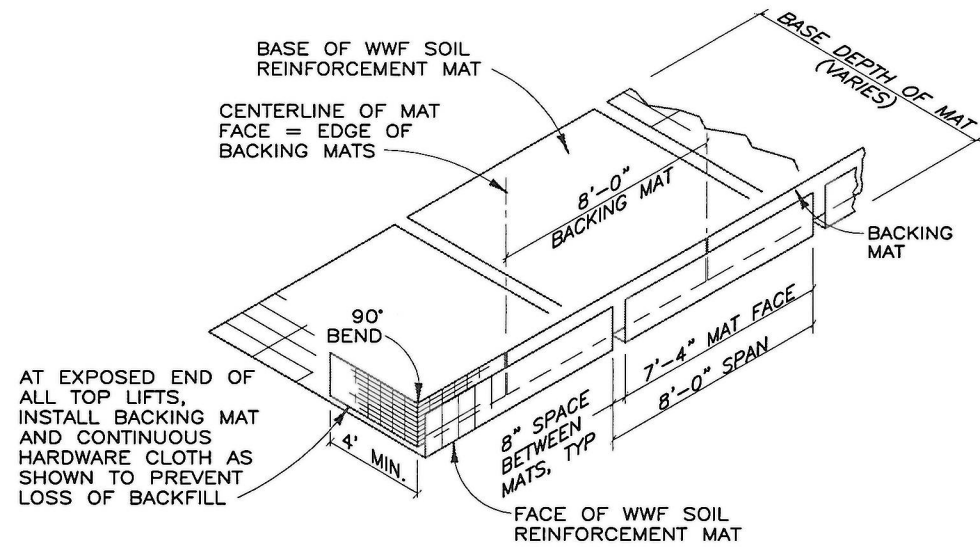
Sequence Details
MSE Walls-Middleton WWTP
Middleton, Idaho

File No.
11B-G2265

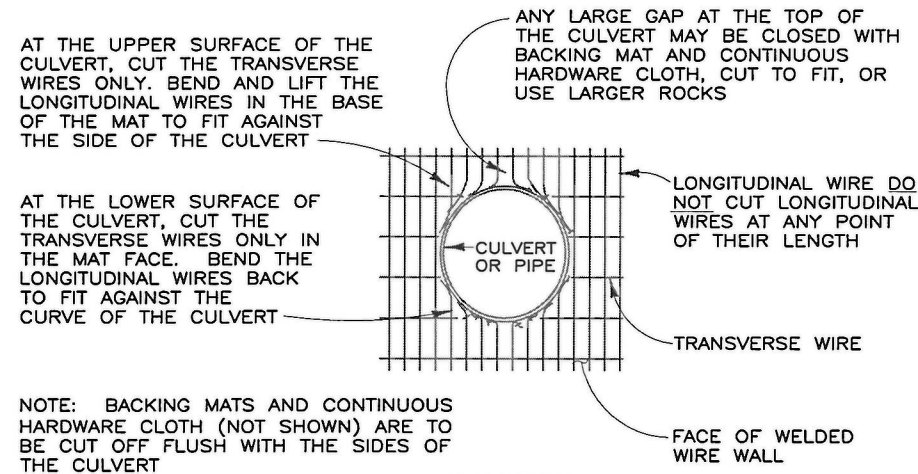
November 28, 2012

Sheet 10 of 13

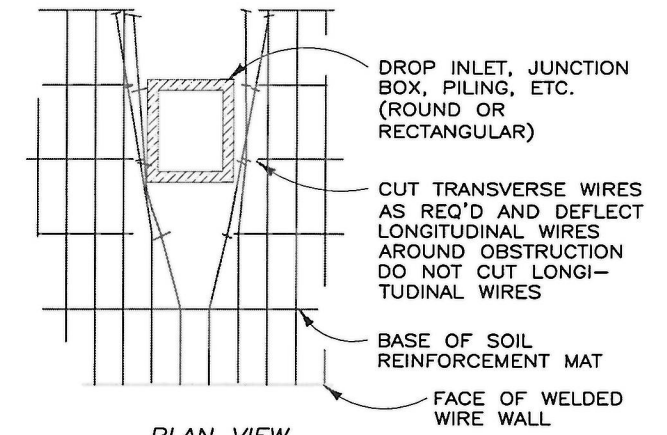




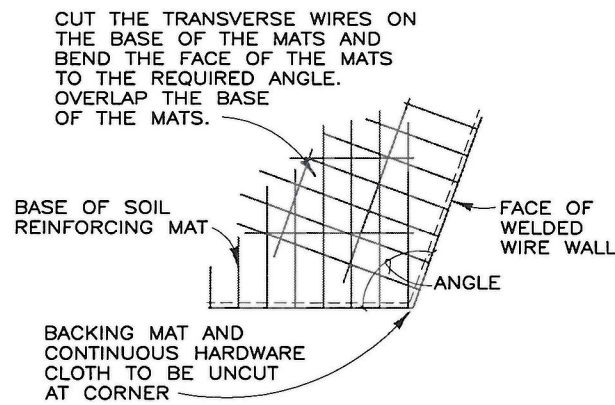
ISOMETRIC VIEW
WELDED WIRE WALL COMPONENTS WITH RETURN MAT
 NOT TO SCALE



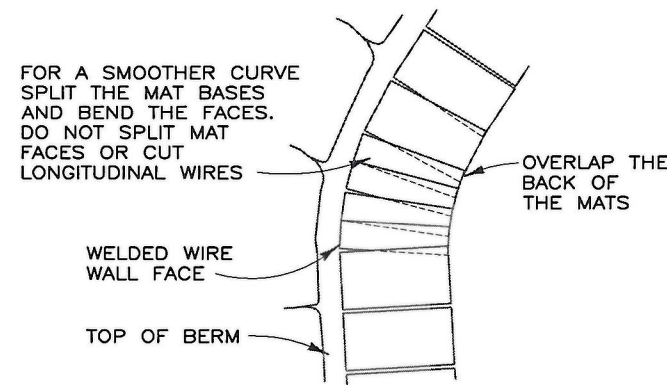
ELEVATION
CULVERT THRU WALL FACE
 NOT TO SCALE



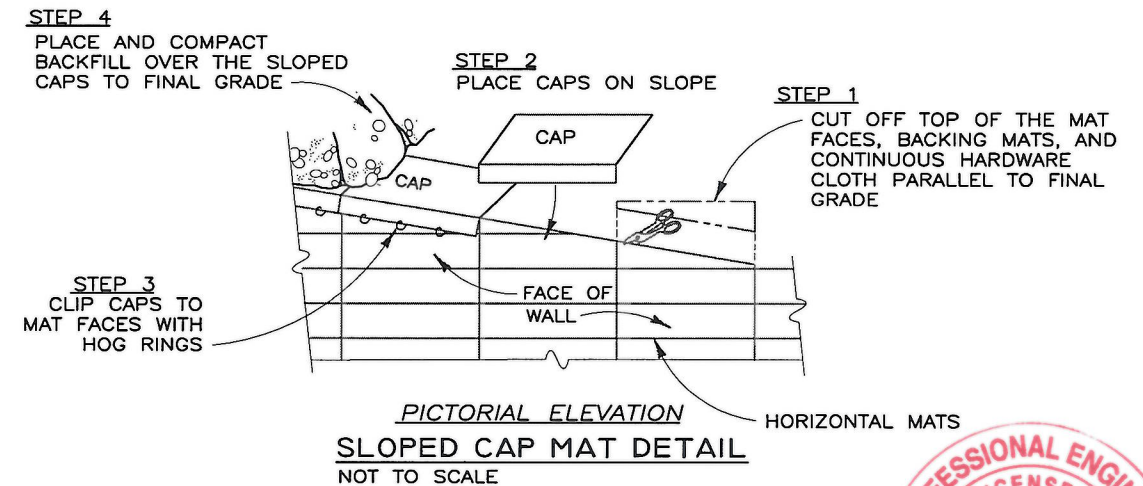
PLAN VIEW
MAT PENETRATION DETAIL
 NOT TO SCALE



PLAN VIEW
OBTUSE CONVEX ANGLE
 NOT TO SCALE



PLAN VIEW
CONVEX CURVE
 NOT TO SCALE



PICTORIAL ELEVATION
SLOPED CAP MAT DETAIL
 NOT TO SCALE



Prepared for:



THIS DRAWING IS FURNISHED SOLELY FOR THE USE OF OR IN CONNECTION WITH THIS PROJECT, AND THE PROPRIETARY INFORMATION SHOWN HEREIN IS NOT TO BE TRANSMITTED TO ANY OTHER ORGANIZATION WITHOUT SPECIFIC AUTHORIZATION BY THE HILFIKER COMPANY. HILFIKER RETAINING WALLS ARE PROTECTED BY ONE OR MORE OF THE FOLLOWING PATENTS: 243,813, 243,897, 288,616, 4,117,886, 4,329,089, 4,324,508, 4,391,557, 4,505,621, 4,643,618, 4,681,023, 4,836,939, 5,078,735, 5,647,895, 5,722,790, 6,357,870 AND OTHERS. OTHER PATENTS PENDING (2004)

Prepared by:

American Geotechnics
 5260 Chinden Boulevard
 Boise, Idaho 83714
 (208) 658-8700 Fax (208) 658-8703

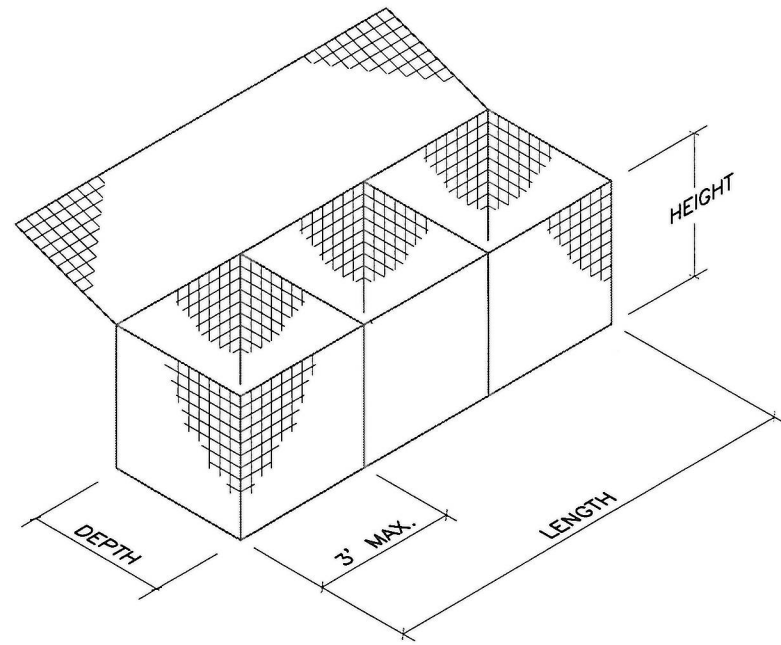
Construction Details
 MSE Walls-Middleton WWTP
 Middleton, Idaho

File No.
 11B-G2265

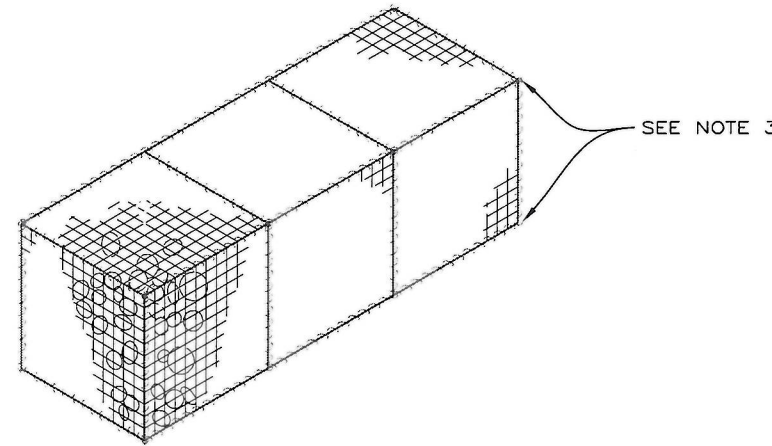
November 28, 2012

Sheet 11 of 13

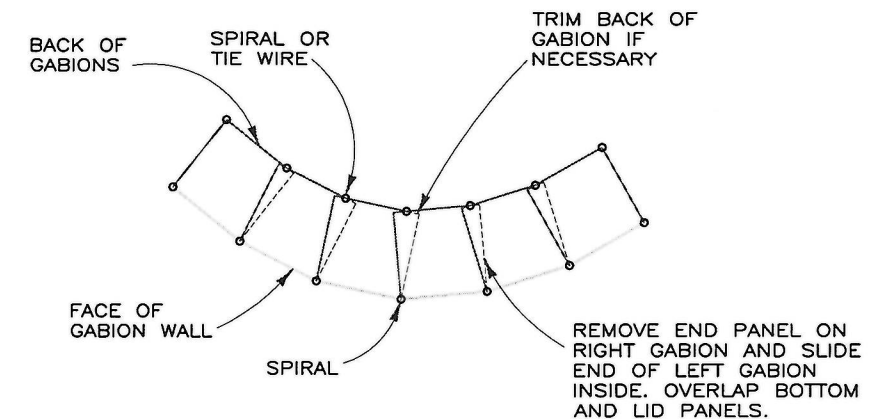




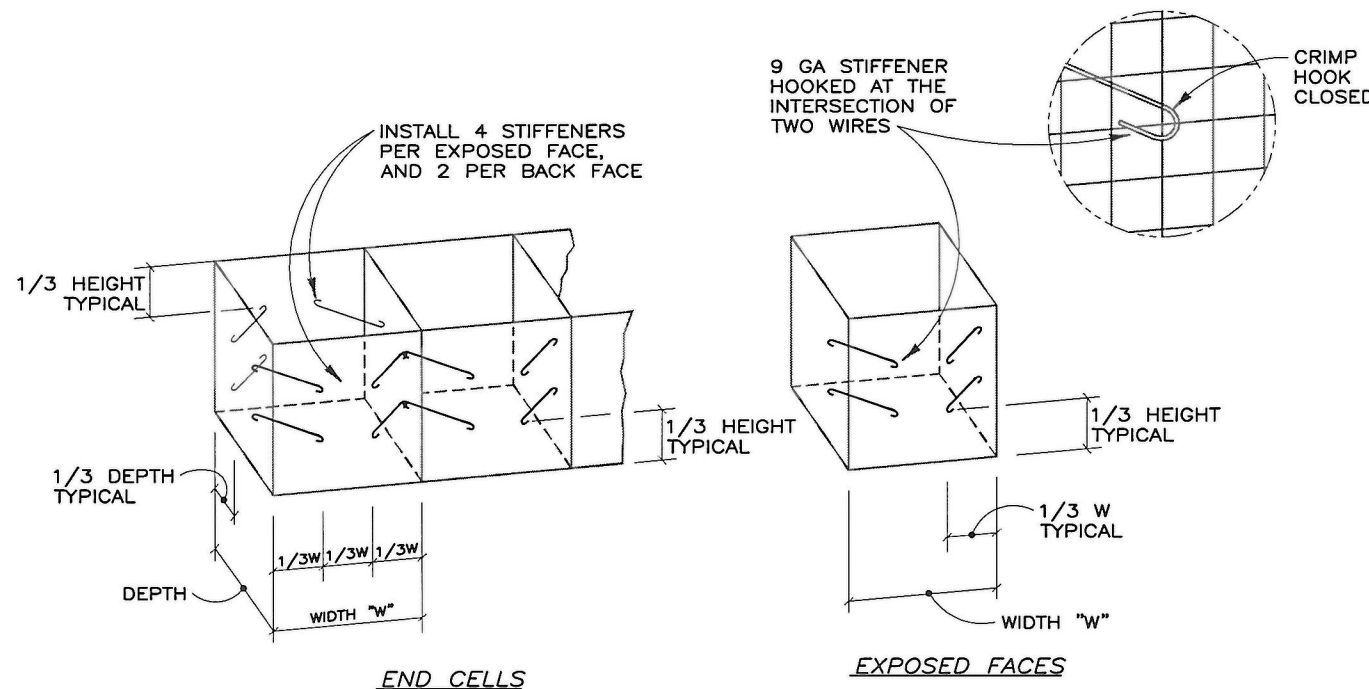
TYPICAL GABION
NOT TO SCALE



TYPICAL ASSEMBLED GABION
NOT TO SCALE



PLAN VIEW
CONVEX CURVE
NOT TO SCALE

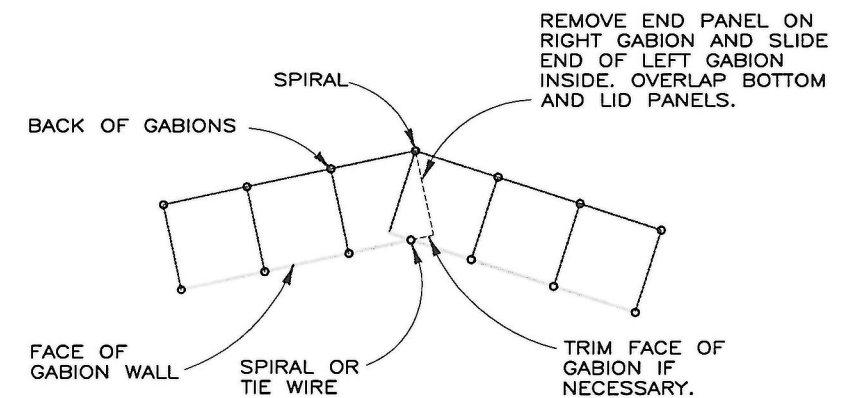


WHERE HEIGHT OF GABION IS 18" OR LESS, INSTALL 2 STIFFENERS PER FACE WHERE HEIGHT IS 12", NO STIFFENERS REQUIRED

END CELLS

EXPOSED FACES

STIFFENER DETAILS
NOT TO SCALE



PLAN VIEW
CONCAVE ANGLE



NOTES

- GABION SIZES ARE EXPRESSED IN FEET.
- GABIONS ARE MANUFACTURED OF 3"x3" WELDED WIRE MESH, 9 GA.
- CONTINUOUS SPIRAL TIE AT GABION AND MSE REINFORCEMENTS.

Prepared for:



HILFIKER RETAINING WALLS
1902 Hilfiker Lane
Eureka, CA 95503-5711
TOLL-FREE 800.762.8969
PH 707.443.5093 FAX 707.443.2891
WEBSITE www.hilfiker.com E-MAIL info@hilfiker.com

THIS DRAWING IS FURNISHED SOLELY FOR THE USE OF OR IN CONNECTION WITH THIS PROJECT, AND THE PROPRIETARY INFORMATION SHOWN HEREON IS NOT TO BE TRANSMITTED TO ANY OTHER ORGANIZATION WITHOUT SPECIFIC AUTHORIZATION BY THE HILFIKER COMPANY. HILFIKER RETAINING WALLS ARE PROTECTED BY ONE OR MORE OF THE FOLLOWING PATENTS: 243,813, 243,897, 268,616, 4,117,886, 4,329,089, 4,324,508, 4,391,557, 4,505,821, 4,643,618, 4,681,023, 4,836,938, 5,076,735, 5,847,885, 5,722,799, 6,357,870 AND OTHERS. OTHER PATENTS PENDING (2004)

Prepared by:

American Geotechnics
5260 Chinden Boulevard
Boise, Idaho 83714
(208) 658-8700 Fax (208) 658-8703

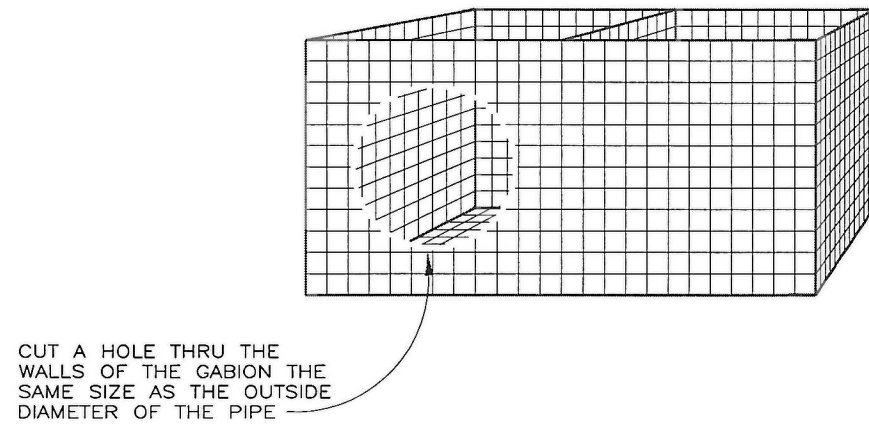
Construction Details
MSE Walls-Middleton WWTP
Middleton, Idaho

File No.
11B-G2265

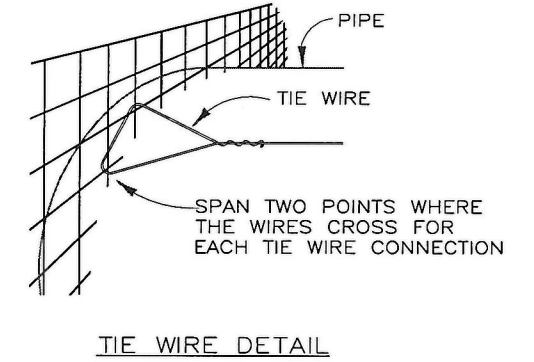
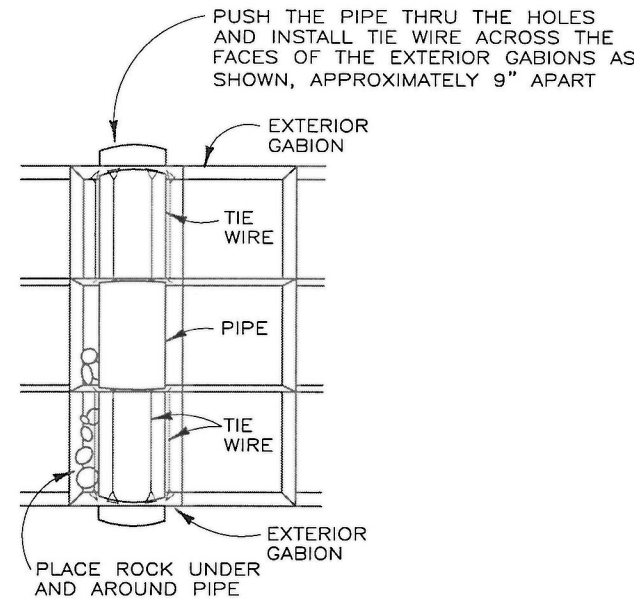
November 28, 2012

Sheet 12 of 13

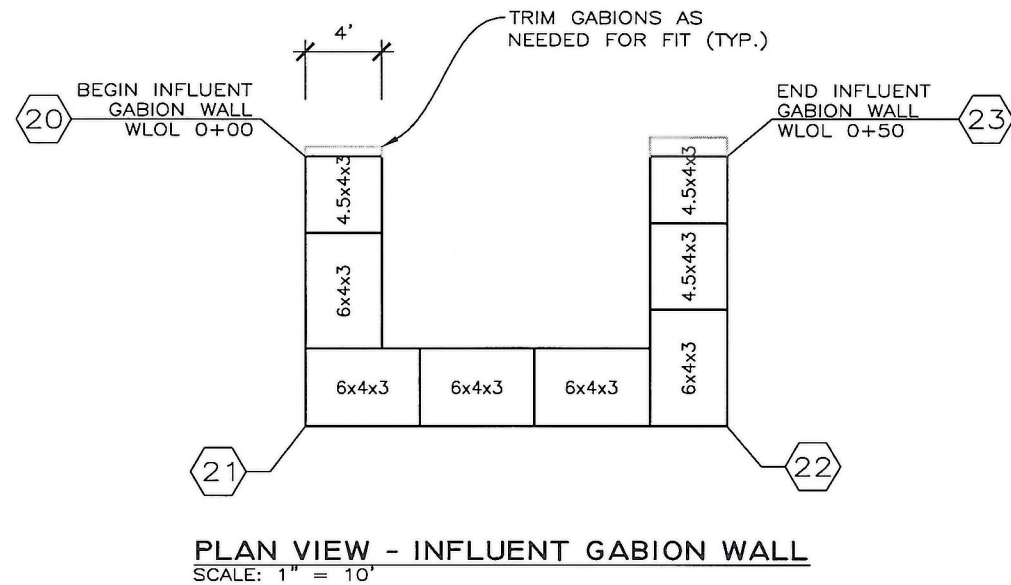




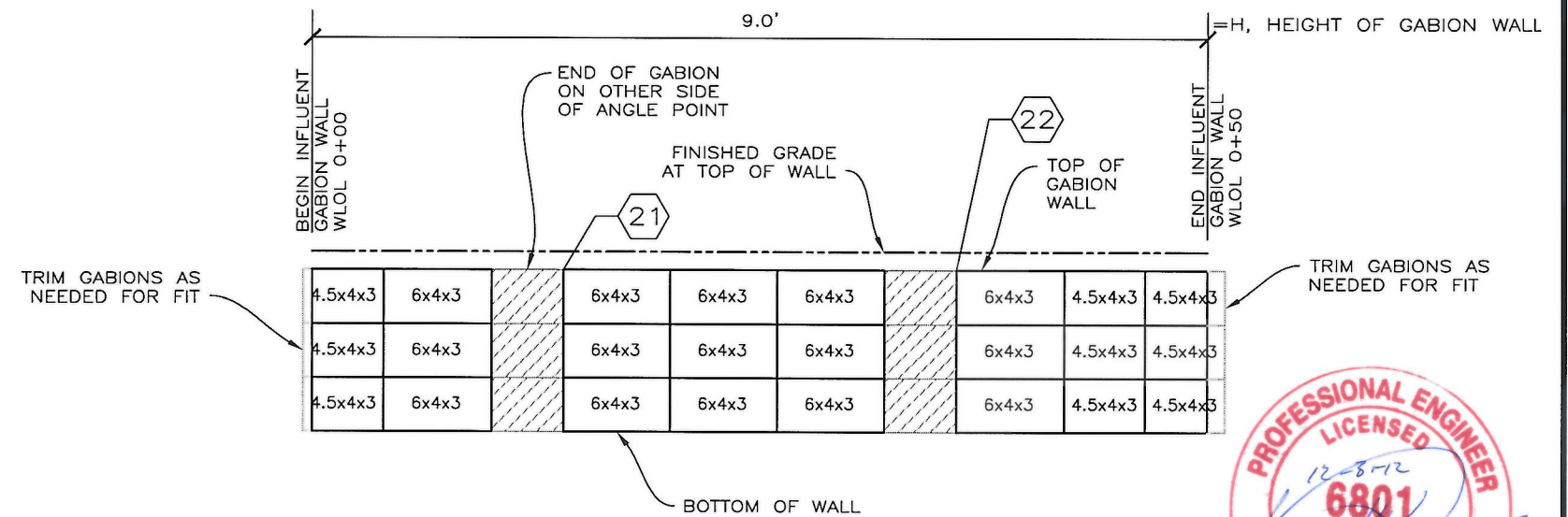
PIPE THRU GABION DETAIL
NOT TO SCALE



TIE WIRE DETAIL



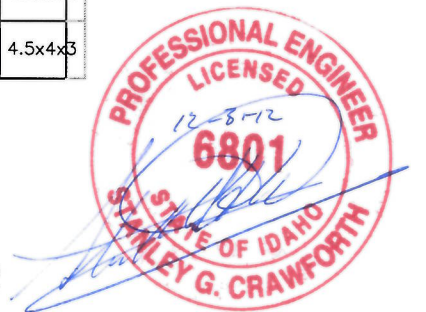
PLAN VIEW - INFLUENT GABION WALL
SCALE: 1" = 10'



DEVELOPED ELEVATION - INFLUENT GABION WALL
SCALE: 1" = 10'

QUANTITY NOTE:

TOTAL 58 CY GABIONS AT INFLUENT WALL



Prepared for:

HILFIKER RETAINING WALLS

 1902 Hilfiker Lane
 Eureka, CA 95503-5711
 TOLL-FREE 800.762.8962
 PH 707.443.5093 FAX 707.443.2891
 WEB SITE www.hilfiker.com EMAIL info@hilfiker.com

THIS DRAWING IS FURNISHED SOLELY FOR THE USE OF OR IN CONNECTION WITH THIS PROJECT, AND THE PROPRIETARY INFORMATION SHOWN HEREON IS NOT TO BE TRANSMITTED TO ANY OTHER ORGANIZATION WITHOUT SPECIFIC AUTHORIZATION BY THE HILFIKER COMPANY. HILFIKER RETAINING WALLS ARE PROTECTED BY ONE OR MORE OF THE FOLLOWING PATENTS: 243,613, 243,807, 288,018, 4,117,886, 4,329,080, 4,324,508, 4,391,557, 4,505,821, 4,643,818, 4,681,023, 4,856,939, 5,076,735, 5,247,885, 5,762,799, 6,357,970 AND OTHERS. OTHER PATENTS PENDING (2004)

Prepared by:

American Geotechnics
 5260 Chinden Boulevard
 Boise, Idaho 83714
 (208) 658-8700 Fax (208) 658-8703

Gabion Wall at Influent Header
 MSE Walls-Middleton WWTP
 Middleton, Idaho

Sheet 13 of 13



File No.
11B-G2265

November 28, 2012