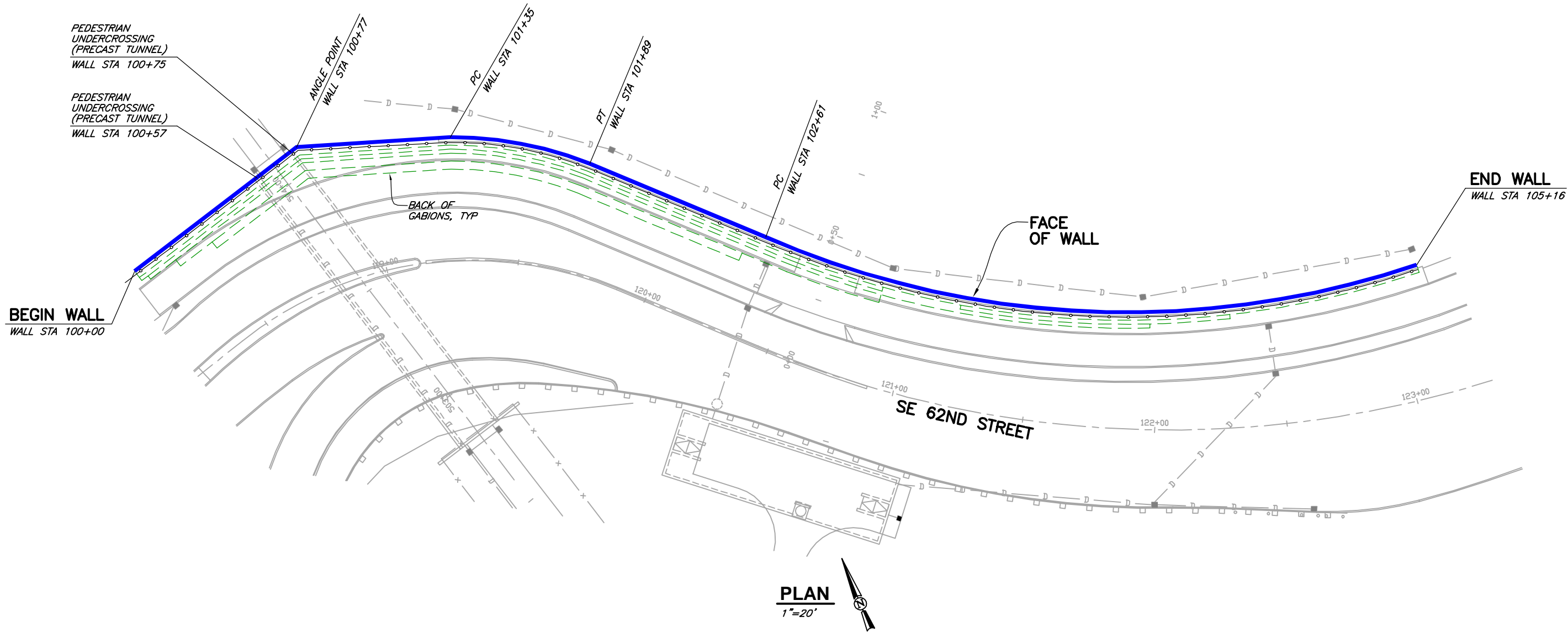


CAD: \\EUREKA\PROJECTS\2017\017155-SE-62ND-WALLS\DWGS\017155-62ND-STREET.DWG
(HRW 161214 AW)



PLAN
1"=20'

SUPPLIED QUANTITIES

SIZE	# REQ'D
6'Lx3'Hx3'D	84
6'Lx3'Hx4'-6"D	51
6'Lx3'Hx6'D	50
6'Lx3'Hx9'D	34
6'Lx3'Hx12'D	31
6'Lx1'-6"Hx3'D	30
6'Lx1'-6"Hx4'-6"D	5
6'Lx1'-6"Hx6'D	17
6'Lx1'-6"Hx9'D	10
3'Lx3'Hx3'D	2
3'Lx3'Hx4'-6"D	1
3'Lx3'Hx12'D	1
3'Lx1'-6"Hx3'D	1
2'Lx3'Hx3'D	1
2'Lx3'Hx4'-6"D	1
2'Lx3'Hx6'D	1
2'Lx3'Hx9'D	1
2'Lx3'Hx12'D	1
4'Lx3'Hx3'D	1
4'Lx3'Hx4'-6"D	1
4'Lx3'Hx6'D	1
4'Lx3'Hx9'D	1
4'Lx3'Hx12'D	1

DESIGN NOTES

- DESIGN IS BASED ON THE ASSUMPTION THAT BACKFILL WITHIN THE CONSTRUCTION MASS, METHODS OF CONSTRUCTION AND QUALITY OF MATERIALS CONFORM TO THE REQUIREMENTS OF HILFIKER RETAINING WALLS.
- ASSUMED SOIL CHARACTERISTICS:
GABION BACKFILL:
UNIT WEIGHT: 112 PCF

RETAINED BACKFILL:
UNIT WEIGHT: 135 PCF
INTERNAL FRICTION ANGLE: 36°

FOUNDATION SOILS:
FRICTION ANGLE FOR SLIDING: 30°
MAXIMUM BEARING PRESSURE: 2.90 KSF (D.L.+L.L.)

- IF ACTUAL CHARACTERISTICS, GRADES OR DIMENSIONS OF SOIL MATERIALS DIFFER FROM THOSE LISTED ABOVE OR SHOWN ON THE PLANS HILFIKER RETAINING WALLS SHALL BE NOTIFIED TO EVALUATE THE NEED TO REDESIGN
- DRAINAGE CONTROL SHALL BE AS SPECIFIED IN THE PROJECT PLANS AND SPECIFICATIONS OR AS DIRECTED BY THE OWNER'S ENGINEER. PAYMENT FOR DRAINAGE SHALL BE AS SPECIFIED IN THE PROJECT SPECIFICATIONS.
 - REFERENCE DOCUMENTS:
WALL PLANS IN PDF FORMAT BY GRAY & OSBORNE INC, DATED NOVEMBER 2016 AND IN .DWG FORMAT BY QUIGG BROTHERS ON 7/6/2017 AND 7/20/17.

THE DESIGN CONTAINED ON THESE DRAWINGS IS BASED ON INFORMATION PROVIDED BY THE OWNER. ON THE BASIS OF THIS INFORMATION, THE HILFIKER COMPANY HAS DESIGNED, AND IS RESPONSIBLE FOR THE INTERNAL STABILITY OF THE STRUCTURE ONLY. EXTERNAL STABILITY, INCLUDING FOUNDATION AND SLOPE STABILITY, IS THE RESPONSIBILITY OF THE OWNER.



EXPIRES: 2/09/2018
ARTWELD GABIONS

HILFIKER RETAINING WALLS

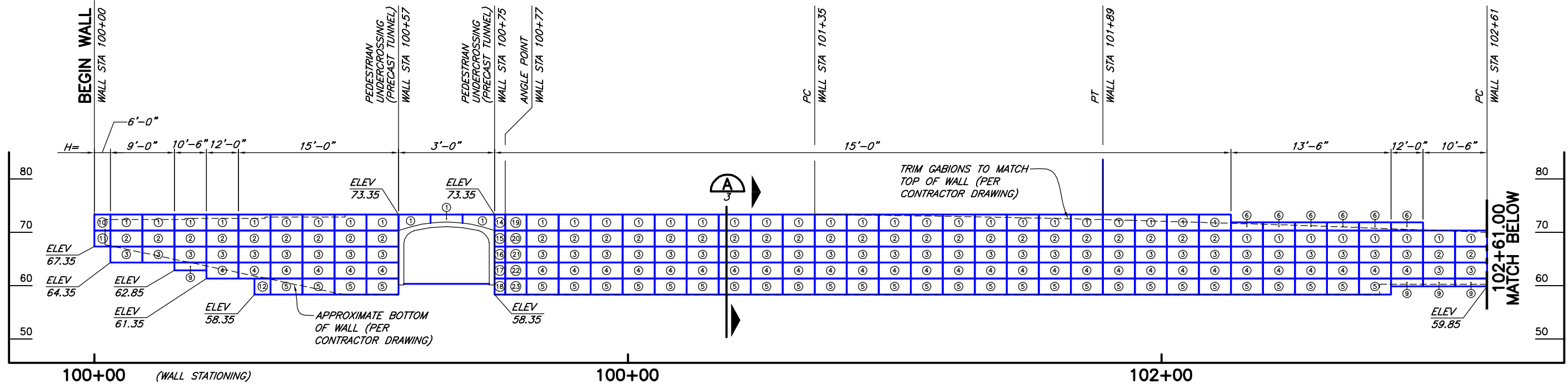


1902 Hilfiker Lane
Eureka, CA 95503-5711
TOLL-FREE 800.762.8962
PH 707.443.5093 FAX 707.443.2891
WEB SITE www.hilfiker.com E-MAIL Info@hilfiker.com



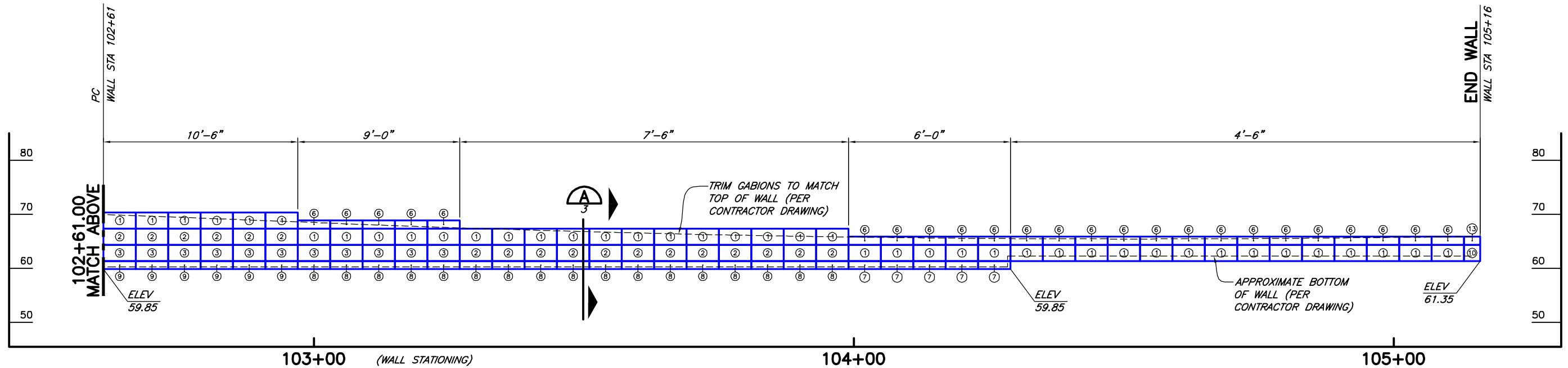
VERIFY SCALES BAR IS ONE INCH ON ORIGINAL DRAWING IF NOT ONE INCH ON THIS SHEET, ADJUST SCALES ACCORDINGLY	
CONSULTING ENGINEERS & GEOLOGISTS, INC. WWW.SHN-ENGR.COM 812 W. WABASH EUREKA, CA 95501 707-441-8855	
SE 62ND STREET EXTENSION IMPROVEMENTS ISSAQUAH, WASHINGTON WALL PLAN, NOTES & QUANTITIES	
DSGN K/JN	BY
DR MMD	REVISION
CHK K/JN	DATE
APVD	NO.
SHEET 1 OF 4	
DATE 7/28/17	
PROJ. NO. 017155	

CAD: \\EUREKA\PROJECTS\2017\017155-SE-62ND-WALLS\DWGS\017155-62ND-STREET.DWG
(HRW 161214 AW)



DEVELOPED WALL ELEVATION (BACKFACE)

1"=10' HORIZ AND VERT
U.O.S.= UNLESS OTHERWISE STATED



DEVELOPED WALL ELEVATION (CONT) (BACKFACE)

1"=10' HORIZ AND VERT
U.O.S.= UNLESS OTHERWISE STATED

GABION SCHEDULE

① 6'Lx3'Hx3'D	⑨ 6'Lx1'-6"Hx9'D	⑰ 2'Lx3'Hx9'D
② 6'Lx3'Hx4'-6"D	⑩ 3'Lx3'Hx3'D	⑱ 2'Lx3'Hx12'D
③ 6'Lx3'Hx6'D	⑪ 3'Lx3'Hx4'-6"D	⑲ 4'Lx3'Hx3'D
④ 6'Lx3'Hx9'D	⑫ 3'Lx3'Hx12'D	⑳ 4'Lx3'Hx4'-6"D
⑤ 6'Lx3'Hx12'D	⑬ 3'Lx1'-6"Hx3'D	㉑ 4'Lx3'Hx6'D
⑥ 6'Lx1'-6"Hx3'D	⑭ 2'Lx3'Hx3'D	㉒ 4'Lx3'Hx9'D
⑦ 6'Lx1'-6"Hx4'-6"D	⑮ 2'Lx3'Hx4'-6"D	㉓ 4'Lx3'Hx12'D
⑧ 6'Lx1'-6"Hx6'D	⑯ 2'Lx3'Hx6'D	

THE DESIGN CONTAINED ON THESE DRAWINGS IS BASED ON INFORMATION PROVIDED BY THE OWNER. ON THE BASIS OF THIS INFORMATION, THE HILFIKER COMPANY HAS DESIGNED, AND IS RESPONSIBLE FOR THE INTERNAL STABILITY OF THE STRUCTURE ONLY. EXTERNAL STABILITY, INCLUDING FOUNDATION AND SLOPE STABILITY, IS THE RESPONSIBILITY OF THE OWNER.



EXPIRES: 2/09/2018



ARTWELD GABIONS
HILFIKER RETAINING WALLS

1902 Hilfiker Lane
Eureka, CA 95503-5711
TOLL-FREE 800.762.8962
PH 707.443.5093 FAX 707.443.2891
WEB SITE www.hilfiker.com E-MAIL info@hilfiker.com



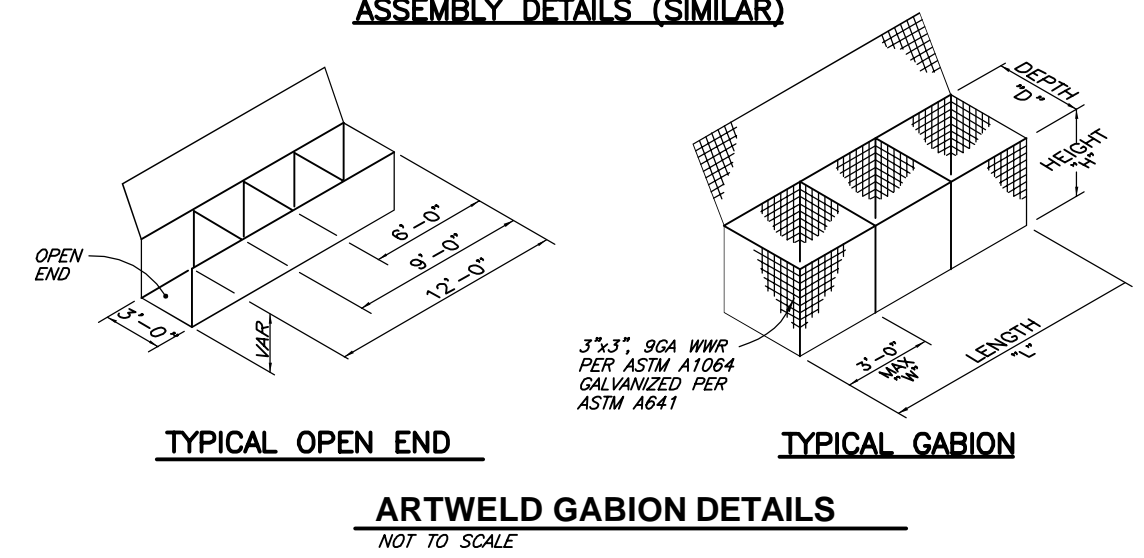
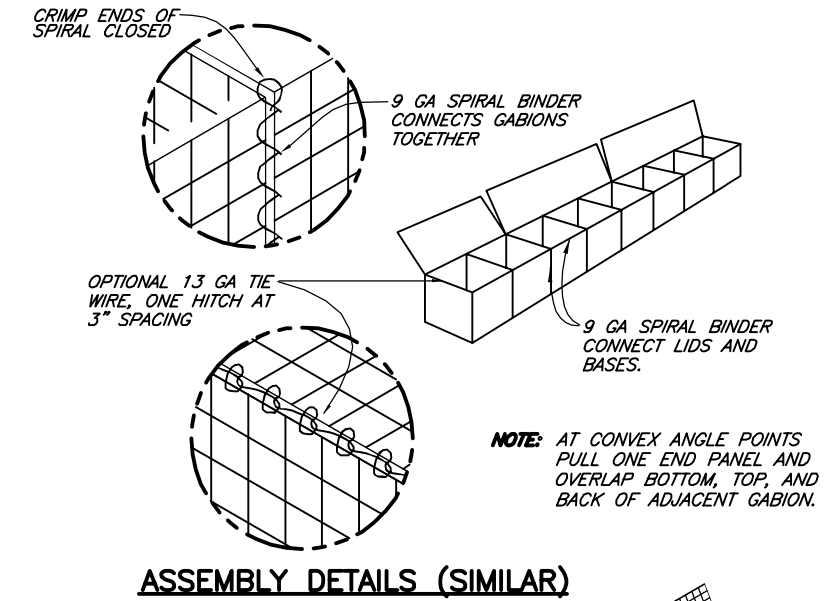
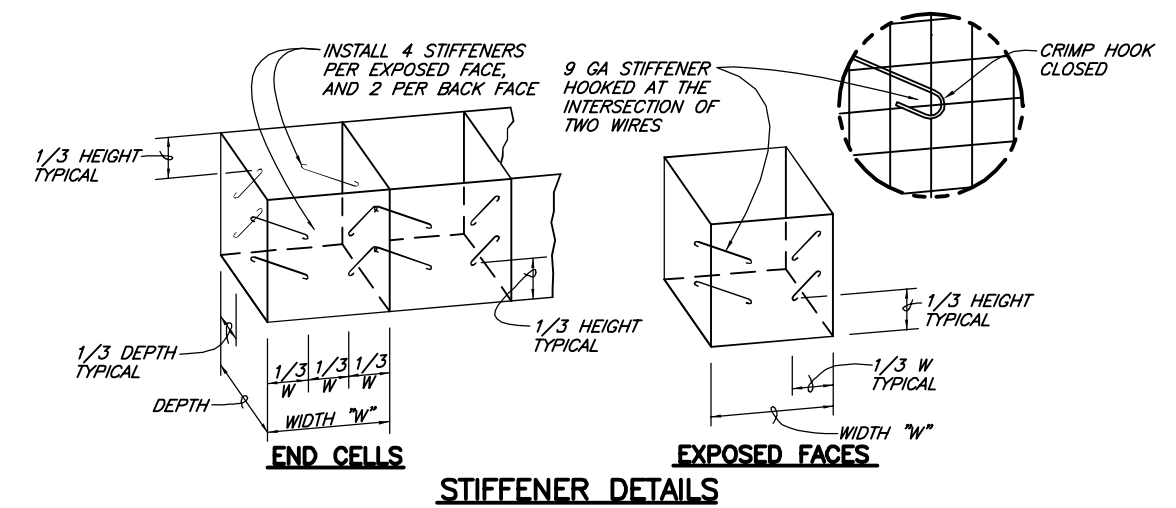
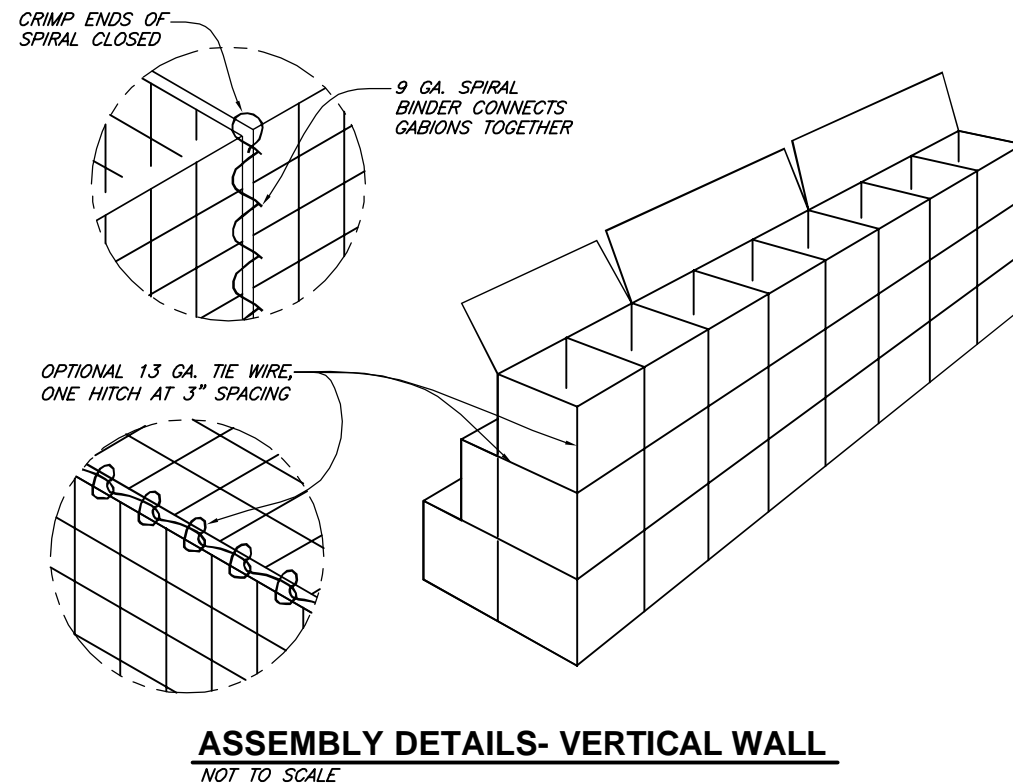
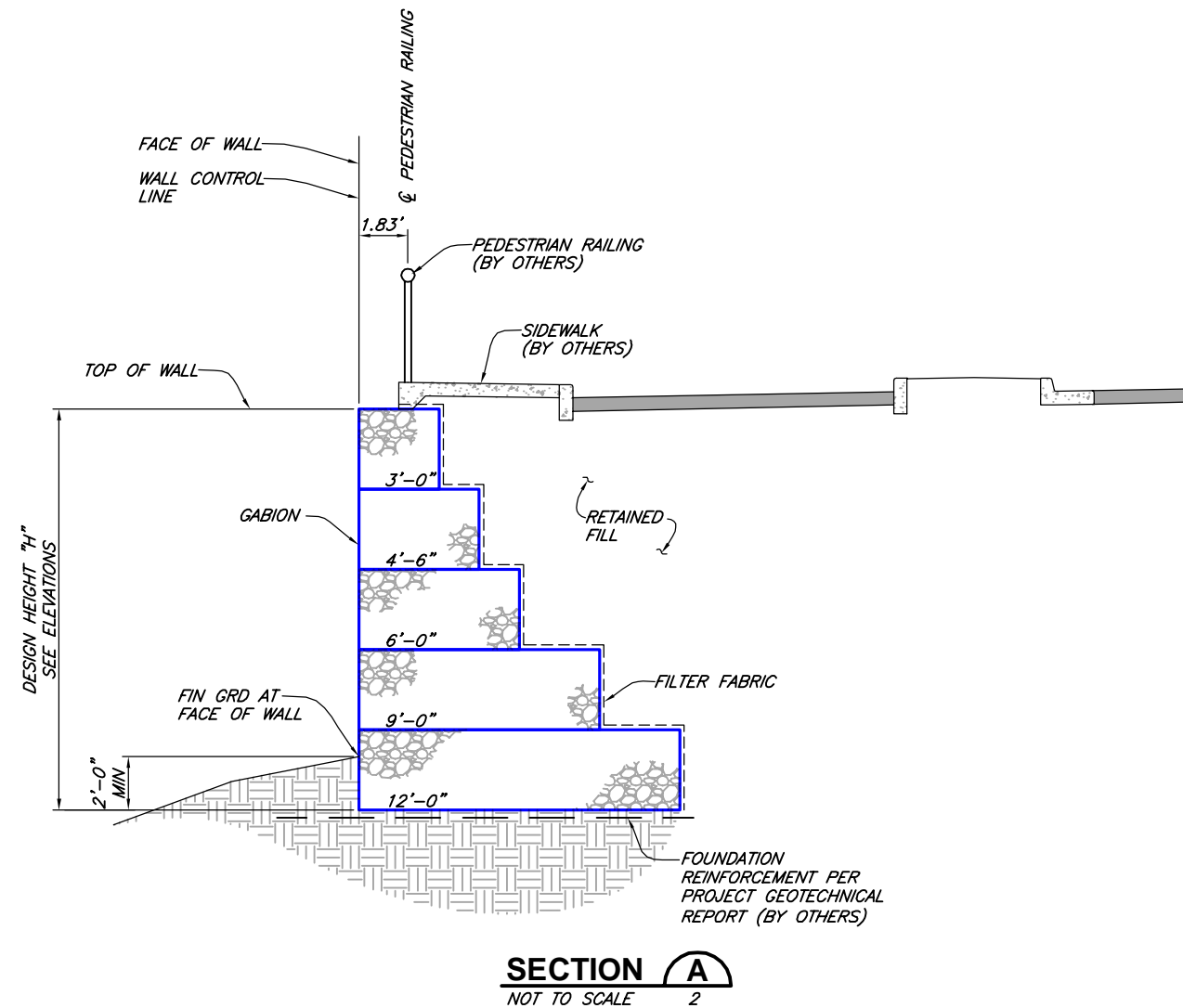
VERIFY SCALES
BAR IS ONE INCH ON
ORIGINAL DRAWING
IF NOT ONE INCH ON
THIS SHEET, ADJUST
SCALES ACCORDINGLY

CONSULTING ENGINEERS
& GEOLOGISTS, INC.
WWW.SHN-ENGR.COM
812 W. WABASH
EUREKA, CA 95501
707-441-8855



DSGN	CHK	APVD	NO.	DATE	REVISION	BY
K/JN	MMD	K/JN				
CITY OF ISSAQUAH	STREET EXTENSION IMPROVEMENTS	ISSAQUAH, WASHINGTON	WALL ELEVATION			
SE 62ND						
SHEET	2	OF	4	DATE	7/28/17	PROJ. NO.
						017155

CAD: \\EUREKA\PROJECTS\2017\017155-SE-62ND-WALLS\DWGS\017155-62ND-STREET.DWG
(HRW 161214 AW)



THE DESIGN CONTAINED ON THESE DRAWINGS IS BASED ON INFORMATION PROVIDED BY THE OWNER. ON THE BASIS OF THIS INFORMATION, THE HILFIKER COMPANY HAS DESIGNED, AND IS RESPONSIBLE FOR THE INTERNAL STABILITY OF THE STRUCTURE ONLY. EXTERNAL STABILITY, INCLUDING FOUNDATION AND SLOPE STABILITY, IS THE RESPONSIBILITY OF THE OWNER.



ARTWELD GABIONS
HILFIKER RETAINING WALLS

1902 Hilfiker Lane
Eureka, CA 95503-5711
TOLL-FREE 800.762.8962
PH 707.443.5093 FAX 707.443.2891
WEB SITE www.hilfiker.com E-MAIL info@hilfiker.com

HW

1902

VERIFY SCALES
BAR IS ONE INCH ON ORIGINAL DRAWING
IF NOT ONE INCH ON THIS SHEET, ADJUST SCALES ACCORDINGLY

CONSULTING ENGINEERS & GEOLOGISTS, INC.
WWW.SHIN-ENGR.COM
812 W. WABASH
EUREKA, CA 95501
707-441-8855

SHIN

DSGN	CHK	APPD	NO.	DATE	REVISION	BY

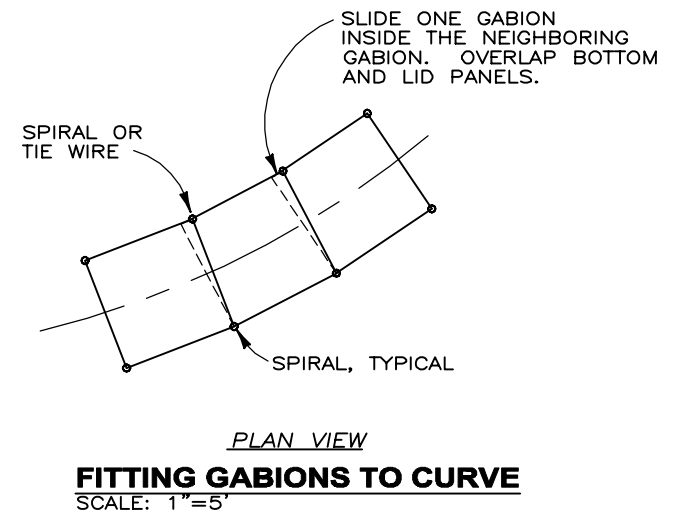
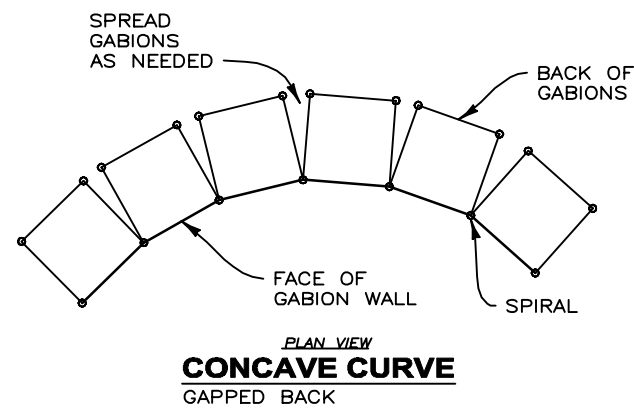
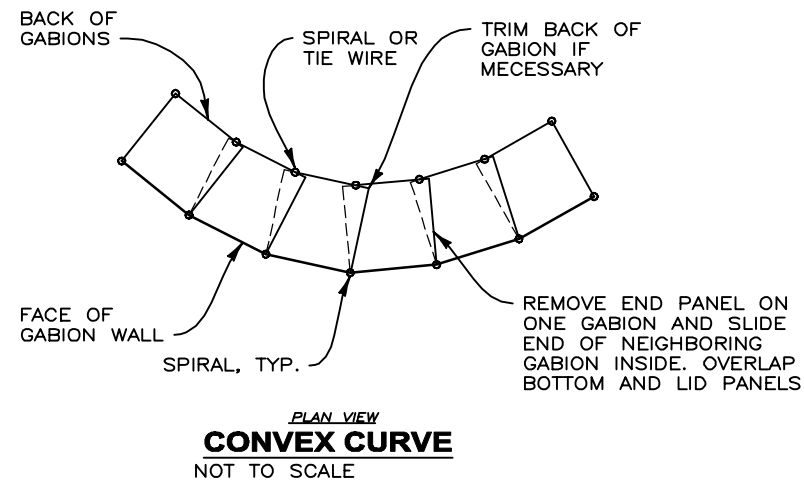
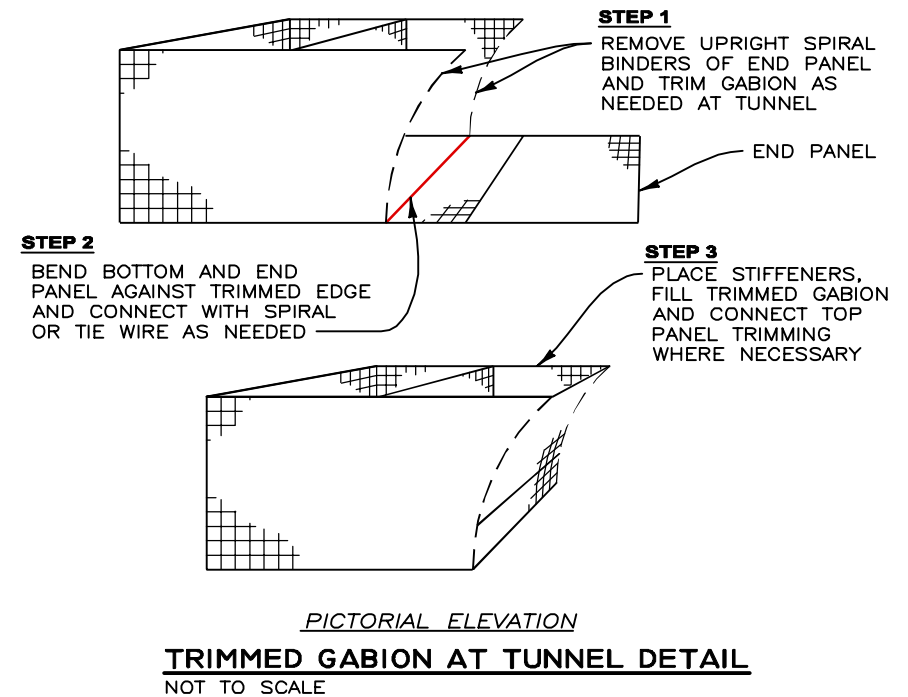
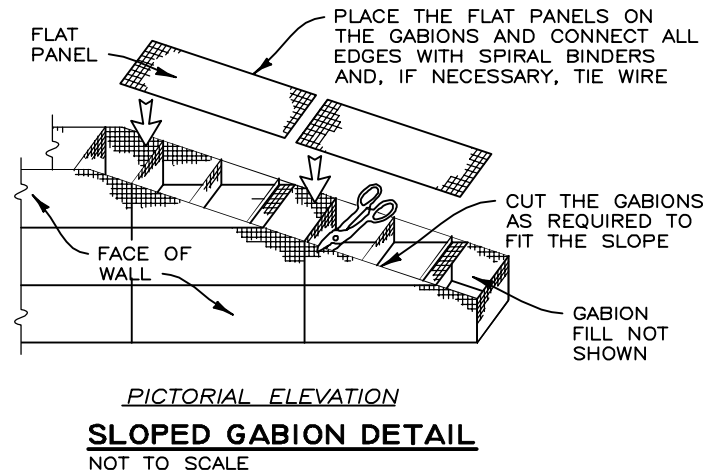
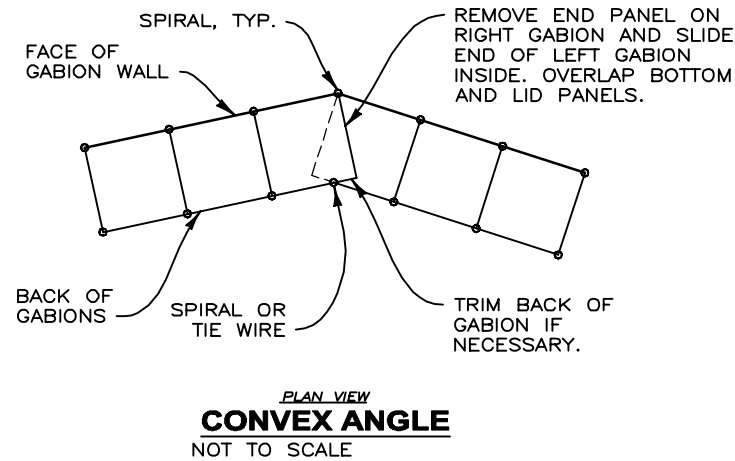
CITY OF ISSAQUAH
STREET EXTENSION IMPROVEMENTS
ISSAQUAH, WASHINGTON

SECTION & DETAILS

SE 62ND STREET EXTENSION IMPROVEMENTS
ISSAQUAH, WASHINGTON

SHEET 3 OF 4
DATE 7/28/17
PROJ. NO. 017155

CAD: \\EUREKA\PROJECTS\2017\017155-SE-62ND-WALLS\DWGS\017155-62ND-STREET.DWG
(HRW 161214 AM)



THE DESIGN CONTAINED ON THESE DRAWINGS IS BASED ON INFORMATION PROVIDED BY THE OWNER. ON THE BASIS OF THIS INFORMATION, THE HILFIKER COMPANY HAS DESIGNED, AND IS RESPONSIBLE FOR THE INTERNAL STABILITY OF THE STRUCTURE ONLY. EXTERNAL STABILITY, INCLUDING FOUNDATION AND SLOPE STABILITY, IS THE RESPONSIBILITY OF THE OWNER.



EXPIRES: 2/09/2018

ARTWELD GABIONS
HILFIKER RETAINING WALLS

HW

1902 Hilfiaker Lane
Eureka, CA 95503-5711
TOLL-FREE 800.762.8962
PH 707.443.5093 FAX 707.443.2891
WEB SITE www.hilfiaker.com E-MAIL info@hilfiaker.com

1902

VERIFY SCALES BAR IS ONE INCH ON ORIGINAL DRAWING IF NOT ONE INCH ON THIS SHEET, ADJUST SCALES ACCORDINGLY				CONSULTING ENGINEERS & GEOLOGISTS, INC. WWW.SHN-ENGR.COM 812 W. WABASH EUREKA, CA 95501 707-441-8855			
CITY OF ISSAQUAH STREET EXTENSION IMPROVEMENTS ISSAQUAH, WASHINGTON				DETAILS			
SE 62ND				BY			
SHEET				REVISION			
4 OF 4				DATE			
NO.				NO.			
DSGN K/JN				APVD			
DR MMD				CHK K/JN			
DATE 7/28/17				PROJ. NO. 017155			