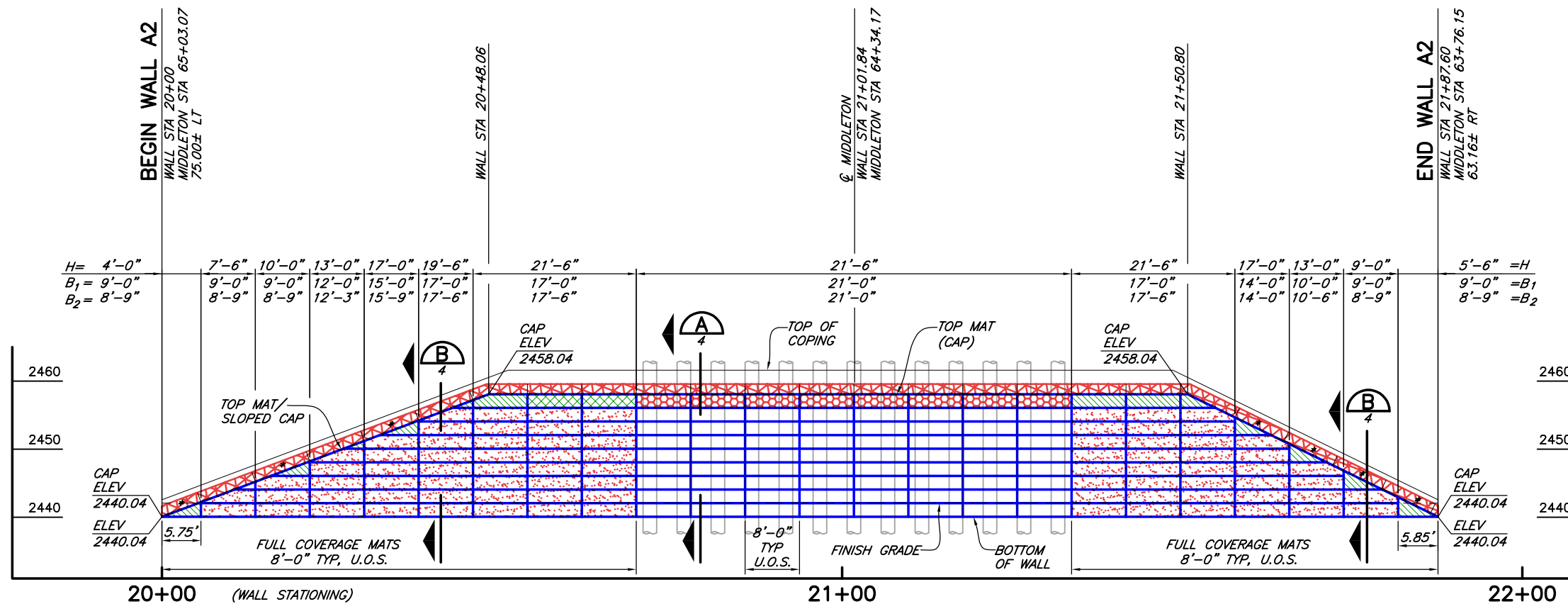
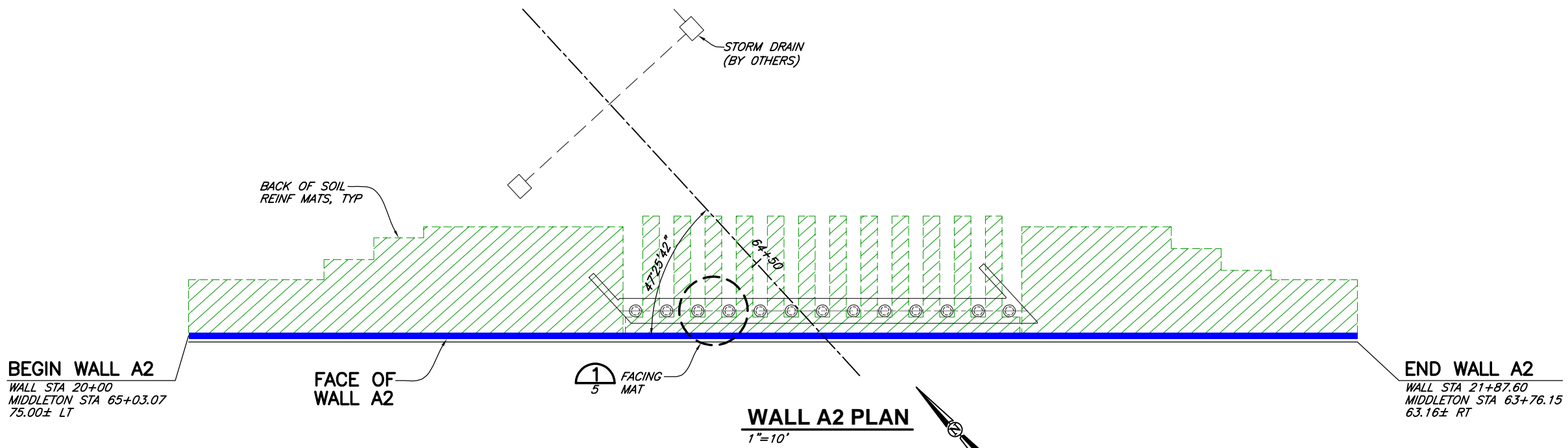


CAD: \\EUREKA\PROJECTS\2020\020090-1-84-ERS\DWGS\020090-184-ERS.DWG  
(HRW 200526 CE)



**WWR MAT LEGEND**

- 4x12, W9.5xW5 WWR CAP WITH 4x12, W7xW3.5 PRONGLESS WWR SOIL REINFORCING MATS
- 4x21, W7xW4 WWR SOIL REINFORCING MATS
- 8x12, W9.5xW5 WWR CAP WITH 8x12, W7xW3.5 PRONGLESS WWR SOIL REINFORCING MATS
- 8x12, W7xW3.5 WWR CAP AND PRONGLESS SOIL REINFORCING MATS
- 8x21, W7xW4 WWR SOIL REINFORCING MATS
- CLOSURE MATS

PROFESSIONAL ENGINEER  
REGISTERED  
STATE OF IDAHO  
K. JEFF NELSON  
EXPIRES: 2/28/2021

ERS  
**HILFIKER RETAINING WALLS**

1902 Hilfiker Lane  
Eureka, CA 95503-5711  
TOLL-FREE 800.762.8962  
PH 707.443.5093 FAX 707.443.2891  
WEBSITE www.hilfiker.com E-MAIL info@hilfiker.com

**HW**

SINCE 1902

THE DESIGN CONTAINED ON THESE DRAWINGS IS BASED ON INFORMATION PROVIDED BY THE OWNER. ON THE BASIS OF THIS INFORMATION, THE HILFIKER COMPANY HAS DESIGNED, AND IS RESPONSIBLE FOR THE INTERNAL STABILITY OF THE STRUCTURE ONLY. EXTERNAL STABILITY, INCLUDING FOUNDATION AND SLOPE STABILITY, IS THE RESPONSIBILITY OF THE OWNER.

VERIFY SCALES  
BAR IS ONE INCH ON ORIGINAL DRAWING  
IF NOT ONE INCH ON THIS SHEET, ADJUST SCALES ACCORDINGLY

812 W. WABASH AVE.  
EUREKA, CA. 95501  
WWW.SHN-ENGR.COM  
707-441-8855

**SHN**

NO.	DATE	REVISION	BY

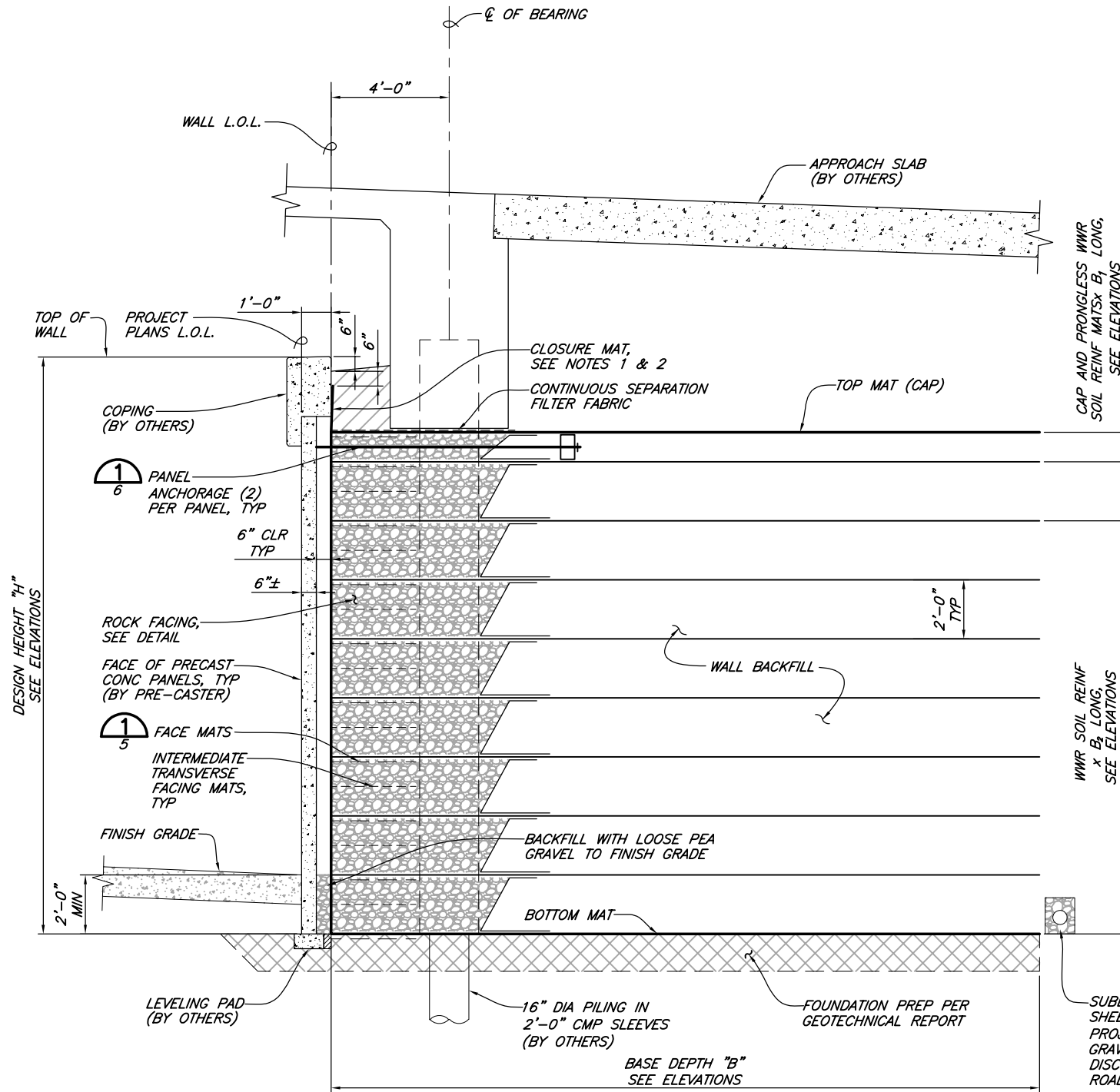
DSGN K/JN  
DR NMD  
CHK K/JN  
APPD

IDAHO TRANSPORTATION DEPARTMENT  
1-84 MIDDLETON ROAD OVERPASS FED AID# A022(618)  
NAMPA, CANYON COUNTY, IDAHO

**WALL A2 PLAN & ELEVATION**

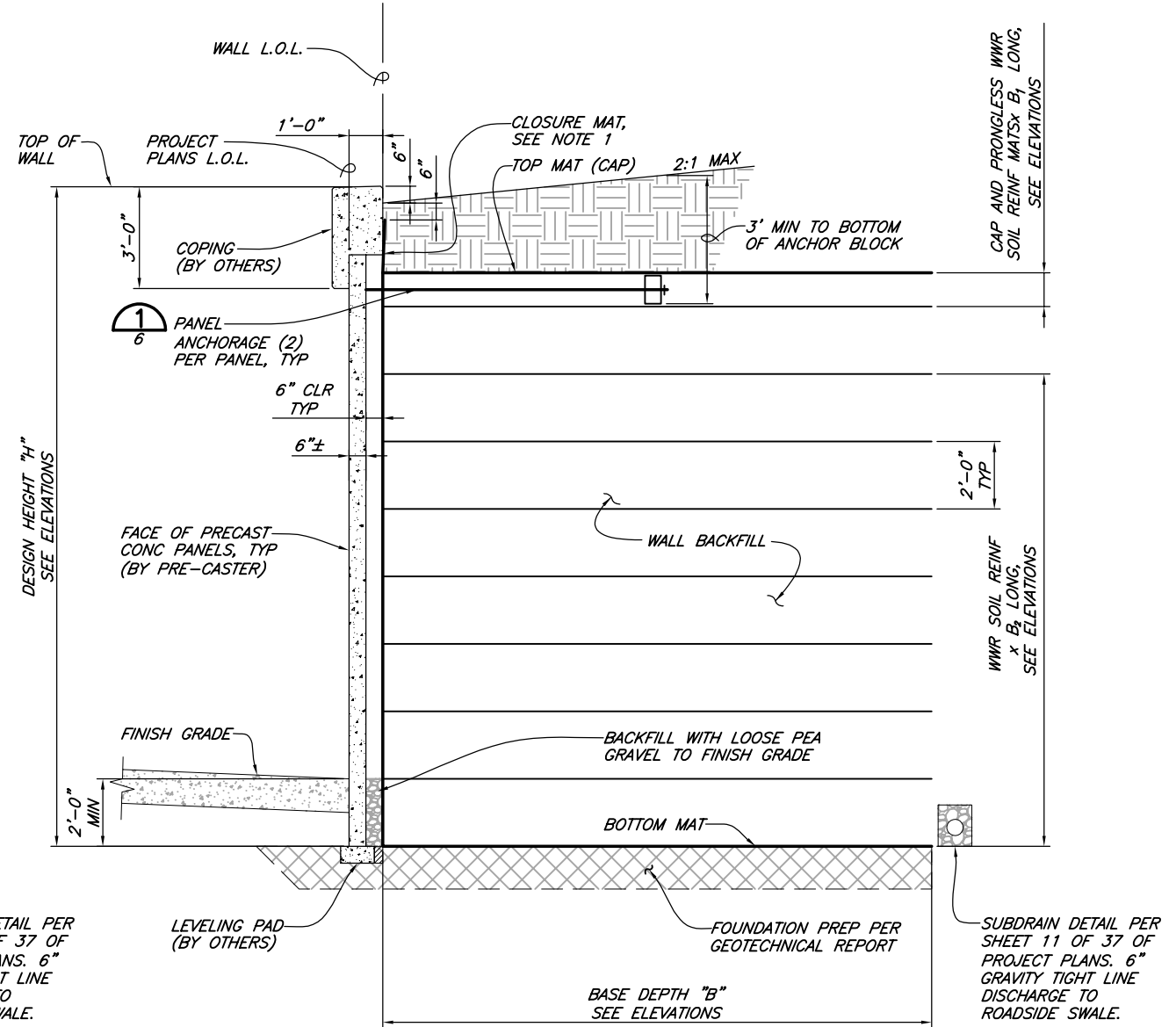
SHEET 3 OF 7  
DATE 7/15/20  
PROJ. NO. 020090

CAD: \\EUREKA\PROJECTS\2020\020090-1-84-ERS\DWGS\020090-184-ERS.DWG  
(HRW 200526 CE)



**SECTION A**  
NOT TO SCALE 2-3

- NOTES:**
1. FIELD TRIM CLOSURE MATS AND BACKING MATS AS REQ'D FOLLOWING SETTLEMENT PERIOD.
  2. CLOSURE MATS AT WALL A2 WILL BEAR ON THE FACE PANEL, NOT THE COPING.



**SECTION B**  
NOT TO SCALE 2-3

- NOTE:**
1. FIELD TRIM CLOSURE MATS AND BACKING MATS AS REQ'D FOLLOWING SETTLEMENT PERIOD.

THE DESIGN CONTAINED ON THESE DRAWINGS IS BASED ON INFORMATION PROVIDED BY THE OWNER. ON THE BASIS OF THIS INFORMATION, THE HILFIKER COMPANY HAS DESIGNED, AND IS RESPONSIBLE FOR THE INTERNAL STABILITY OF THE STRUCTURE ONLY. EXTERNAL STABILITY, INCLUDING FOUNDATION AND SLOPE STABILITY, IS THE RESPONSIBILITY OF THE OWNER.



**ERS HILFIKER RETAINING WALLS**

1902 Hilfiker Lane  
Eureka, CA 95503-5711  
TOLL-FREE 800.762.8962  
PH 707.443.5093 FAX 707.443.2891  
WEBSITE www.hilfiker.com E-MAIL info@hilfiker.com

**1902**  
SINCE 1902

VERIFY SCALES  
BAR IS ONE INCH ON ORIGINAL DRAWING  
IF NOT ONE INCH ON THIS SHEET, ADJUST SCALES ACCORDINGLY

812 W. WABASH AVE.  
EUREKA, CA. 95501  
WWW.SHN-ENGR.COM  
707-441-8855

**SHN**

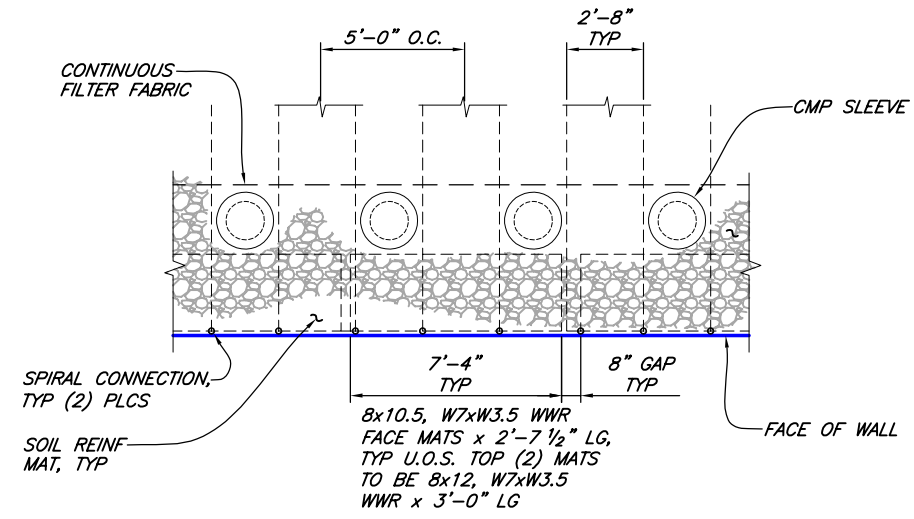
DESIGN	K/JN	DR	NMD	CHK	K/JN	APVD	
							NO.
							DATE
							REVISION
							BY

IDAHO TRANSPORTATION DEPARTMENT  
1-84 MIDDLETON ROAD OVERPASS FED AID# A022(618)  
NAMPA, CANYON COUNTY, IDAHO

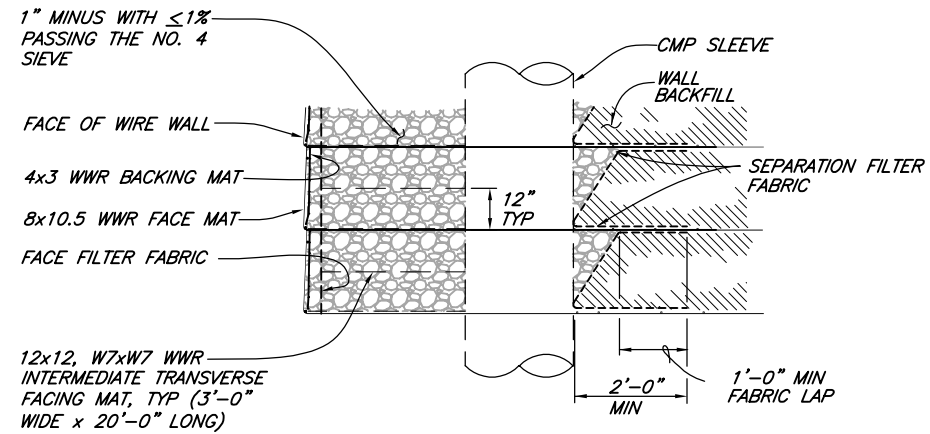
**WALL SECTIONS**

SHEET 4 OF 7  
DATE 7/15/20  
PROJ. NO. 020090

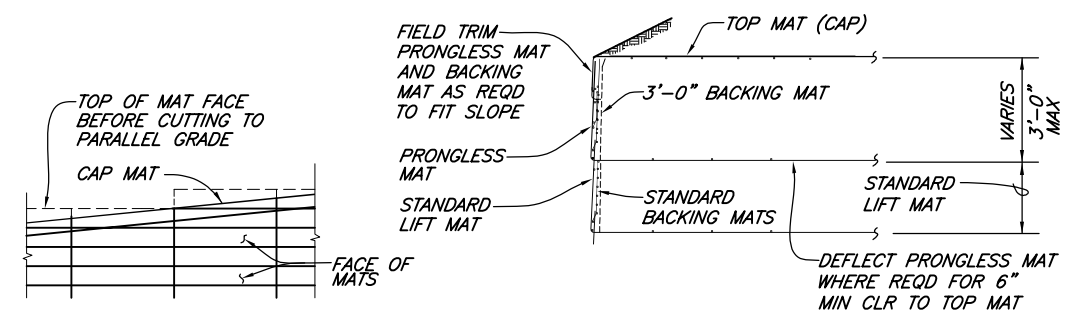
CAD: \\EUREKA\PROJECTS\2020\020090-1-84-ERS\DWGS\020090-184-ERS.DWG (HRW 200526 CE)



**DETAIL 1**  
NOT TO SCALE 2-4



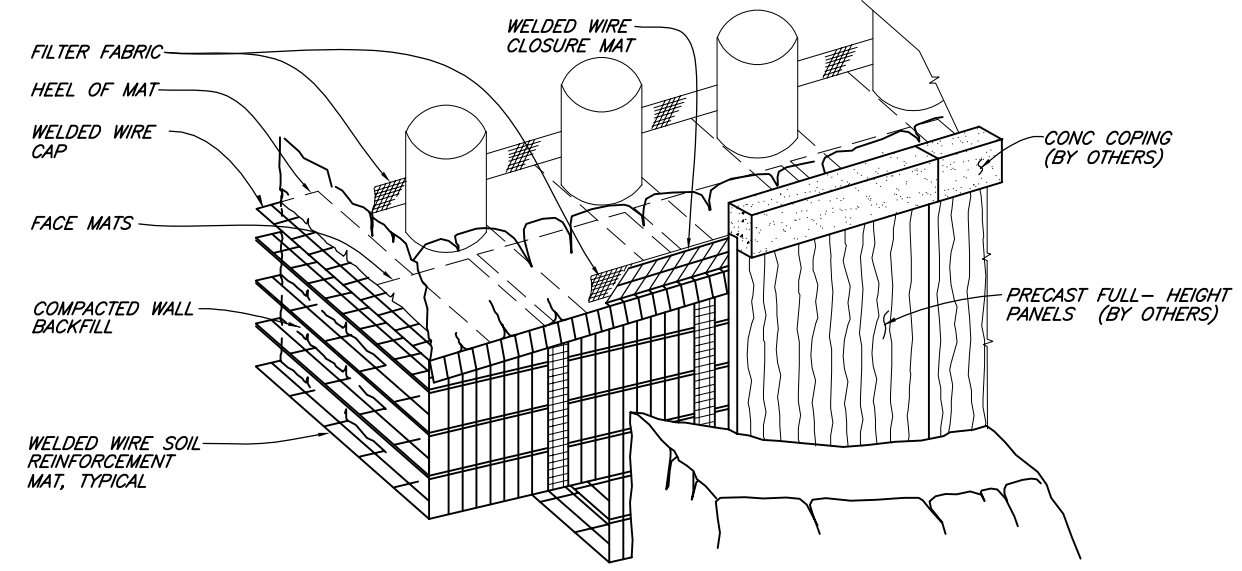
**ROCK FACING**  
NOT TO SCALE



**ELEVATION AT WALL FACE**      **SECTION**

- INSTALLATION SEQUENCE**
1. PLACE THE PRONGLESS MATS AND BACKING MATS FOR THE TOP LIFTS.
  2. CUT THE PRONGLESS AND BACKING MAT FACES OFF PARALLEL TO THE SLOPE OF THE FINAL GRADE.
  3. PLACE AND COMPACT THE BACKFILL IN THE TOP LIFTS TO PARALLEL THE FINAL GRADE SLOPE.
  4. PLACE THE CAPS ON THE BACKFILL AND CLIP THEM TO THE PRONGLESS MAT FACES WITH HOG RINGS.
  5. PLACE AND COMPACT THE FINAL COVER OVER THE CAP MATS.

**SLOPED CAP DETAILS**  
NOT TO SCALE



**PICTORIAL ELEVATION**  
NOT TO SCALE

THE DESIGN CONTAINED ON THESE DRAWINGS IS BASED ON INFORMATION PROVIDED BY THE OWNER. ON THE BASIS OF THIS INFORMATION, THE HILFIKER COMPANY HAS DESIGNED, AND IS RESPONSIBLE FOR THE INTERNAL STABILITY OF THE STRUCTURE ONLY. EXTERNAL STABILITY, INCLUDING FOUNDATION AND SLOPE STABILITY, IS THE RESPONSIBILITY OF THE OWNER.



**ERS**  
**HILFIKER RETAINING WALLS**

**HW**

1902 Hilfiker Lane  
Eureka, CA 95503-5711  
TOLL-FREE 800.762.8962  
PH 707.443.5093 FAX 707.443.2891  
WEBSITE www.hilfiker.com E-MAIL info@hilfiker.com

VERIFY SCALES  
 BAR IS ONE INCH ON ORIGINAL DRAWING  
 IF NOT ONE INCH ON THIS SHEET, ADJUST SCALES ACCORDINGLY

812 W. WABASH AVE.  
 EUREKA, CA. 95501  
 WWW.SHN-ENGR.COM  
 707-441-8855

**SHN**

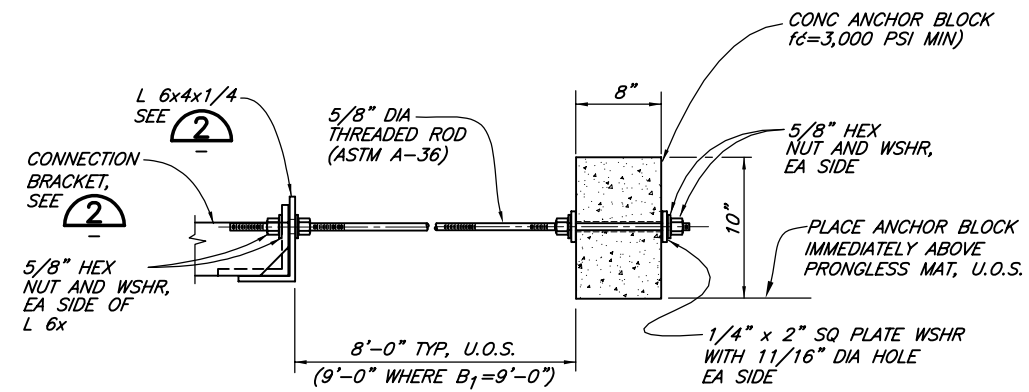
DESIGN	K/JN	DATE
DR	MMD	NO.
CHK	K/JN	REVISION
APVD		BY

IDAHO TRANSPORTATION DEPARTMENT  
 1-84 MIDDLETON ROAD OVERPASS FED AID# A022(618)  
 NAMPA, CANYON COUNTY, IDAHO

**DETAILS**

SHEET  
**5** OF 7  
 DATE 7/15/20  
 PROJ. NO. 020090

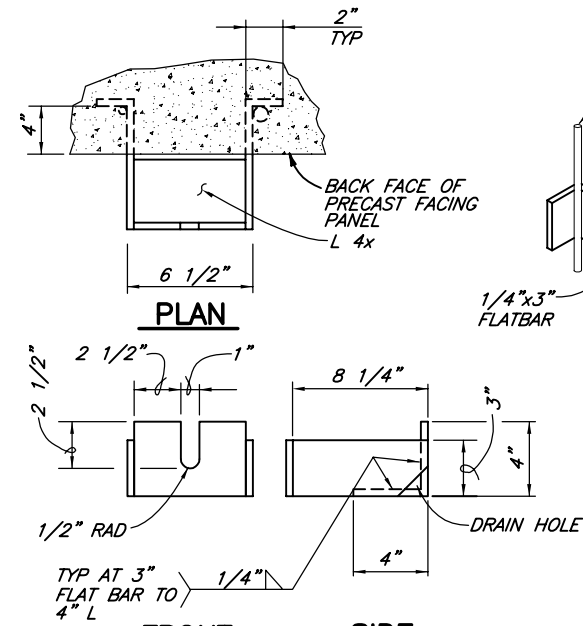
CAD: \\EUREKA\PROJECTS\2020\020090-1-84-ERS\DWGS\020090-184-ERS.DWG (HRW 200526 CE)



THREADED RODS, PLATES, NUTS AND WASHERS SHALL BE A36 STEEL AND HOT-DIP GALVANIZED AFTER FABRICATION (2 OZ/SQ FT MIN PER AASHTO M-111)

**DETAIL 1**

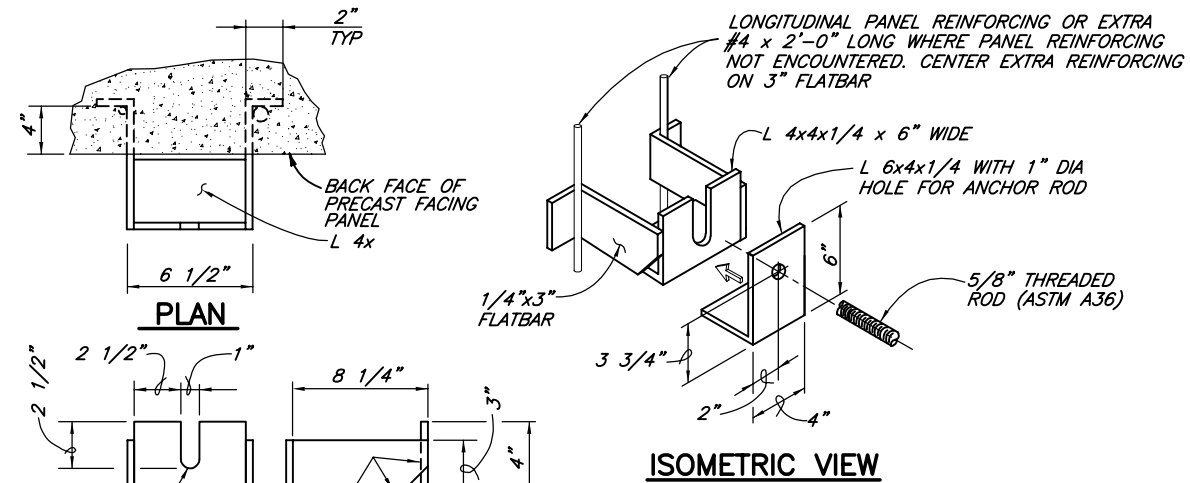
NOT TO SCALE  
U.O.S.= UNLESS OTHERWISE STATED



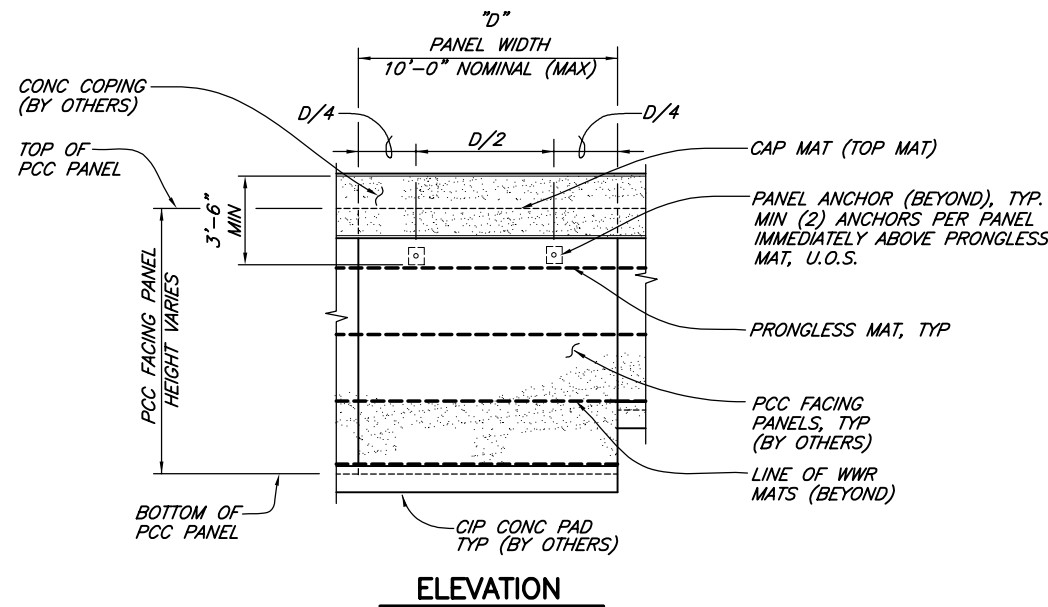
CONNECTION BRACKET ASSEMBLIES SHALL BE FABRICATION OF A36 STEEL AND HOT-DIP GALVANIZED AFTER FABRICATION (2 OZ/SQ FT MIN PER AASHTO M-111)

**DETAIL 2**

NOT TO SCALE



**ISOMETRIC VIEW**



**PCC PANEL CONNECTION DETAIL**

NOT TO SCALE  
U.O.S.= UNLESS OTHERWISE STATED



EXPIRES: 2/28/2021

ERS

**HILFIKER RETAINING WALLS**



1902 SINCE  
1902 QUALITY PRODUCTS

1902 Hilfiker Lane  
Eureka, CA 95503-5711  
TOLL-FREE 800.762.8962  
PH 707.443.5093 FAX 707.443.2891  
WEBSITE www.hilfiker.com E-MAIL info@hilfiker.com

THE DESIGN CONTAINED ON THESE DRAWINGS IS BASED ON INFORMATION PROVIDED BY THE OWNER. ON THE BASIS OF THIS INFORMATION, THE HILFIKER COMPANY HAS DESIGNED, AND IS RESPONSIBLE FOR THE INTERNAL STABILITY OF THE STRUCTURE ONLY. EXTERNAL STABILITY, INCLUDING FOUNDATION AND SLOPE STABILITY, IS THE RESPONSIBILITY OF THE OWNER.

VERIFY SCALES  
BAR IS ONE INCH ON ORIGINAL DRAWING  
IF NOT ONE INCH ON THIS SHEET, ADJUST SCALES ACCORDINGLY

812 W. WABASH AVE.  
EUREKA, CA. 95501  
WWW.SHN-ENGR.COM  
707-441-8855



DESIGN	K/JN	DR	NMD	CHK	K/JN	APP'D	APVD
NO.	DATE	REVISION	BY				

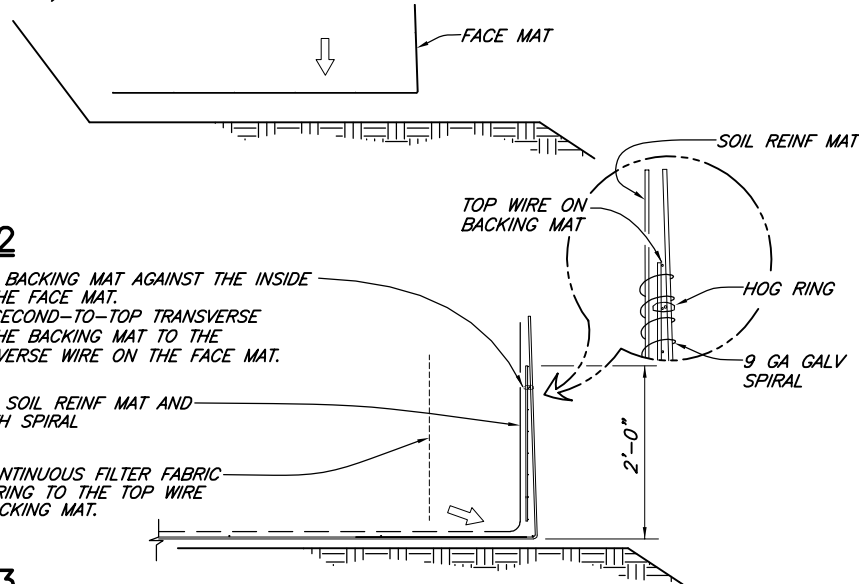
IDAHO TRANSPORTATION DEPARTMENT  
1-84 MIDDLETON ROAD OVERPASS FED AID# A022(618)  
NAMPA, CANYON COUNTY, IDAHO

**DETAILS**

SHEET  
6 OF 7  
DATE 7/15/20  
PROJ. NO.  
020090

**STEP 1**

PLACE THE FIRST COURSE OF SOIL REINFORCEMENT MATS (FACE MATS) ON PREPARED FOUNDATION.

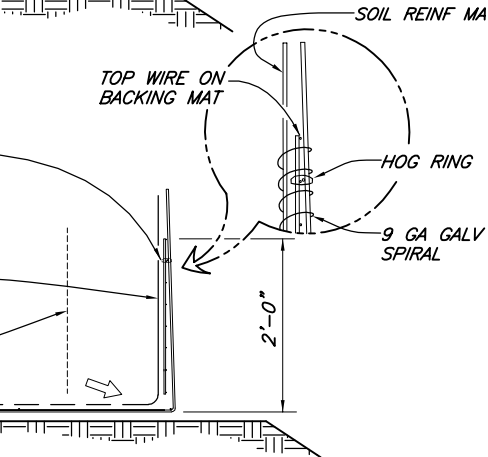


**STEP 2**

PLACE THE BACKING MAT AGAINST THE INSIDE FACE OF THE FACE MAT. CLIP THE SECOND-TO-TOP TRANSVERSE WIRE ON THE BACKING MAT TO THE TOP TRANSVERSE WIRE ON THE FACE MAT.

PLACE THE SOIL REINF MAT AND ATTACH WITH SPIRAL

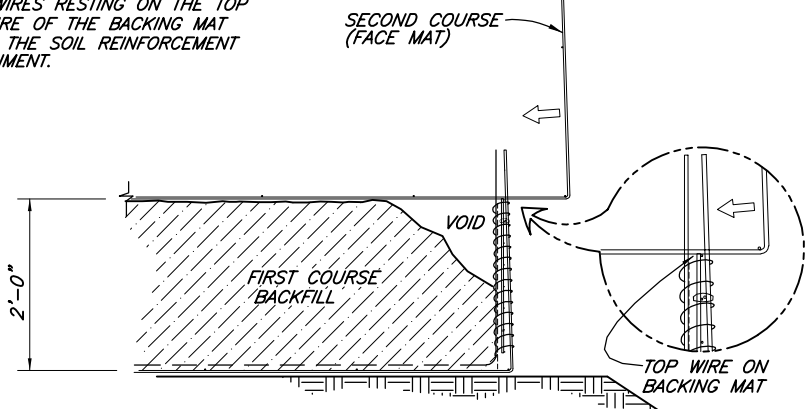
INSTALL CONTINUOUS FILTER FABRIC AND HOG-RING TO THE TOP WIRE ON THE BACKING MAT.



**STEP 3**

PLACE AND COMPACT THE BACKFILL IN LAYERS AND DENSITIES AS SPECIFIED IN THE PROJECT PLANS. LEAVE A VOID AT THE FACE AS SHOWN.

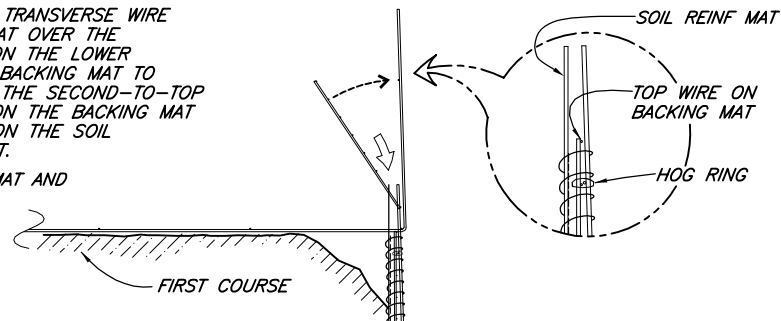
PLACE THE SECOND COURSE OF SOIL REINFORCEMENT MATS WITH THE BASE LONGITUDINAL WIRES RESTING ON THE TOP TRANSVERSE WIRE OF THE BACKING MAT BELOW. SLIDE THE SOIL REINFORCEMENT MAT INTO ALIGNMENT.



**STEP 4**

HOOK THE BOTTOM TRANSVERSE WIRE OF THE BACKING MAT OVER THE VERTICAL PRONGS ON THE LOWER MAT. ROTATE THE BACKING MAT TO VERTICAL AND CLIP THE SECOND-TO-TOP TRANSVERSE WIRE ON THE BACKING MAT TO THE TOP WIRE ON THE SOIL REINFORCEMENT MAT.

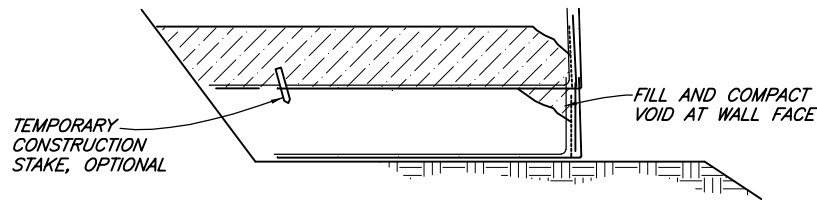
PLACE SOIL REINF MAT AND ATTACH WITH SPIRAL



**NOTE:** ROCK FACING AND FACE MATS ONLY OCCUR AT PORTIONS OF WALLS AT ABUTMENTS

**STEP 5**

INSTALL THE FILTER FABRIC. PLACE AND COMPACT THE BACKFILL TO THE BASE ELEVATION OF THE NEXT MAT. REPEAT STEPS 3 THRU 5 TO THE TOP LIFT.



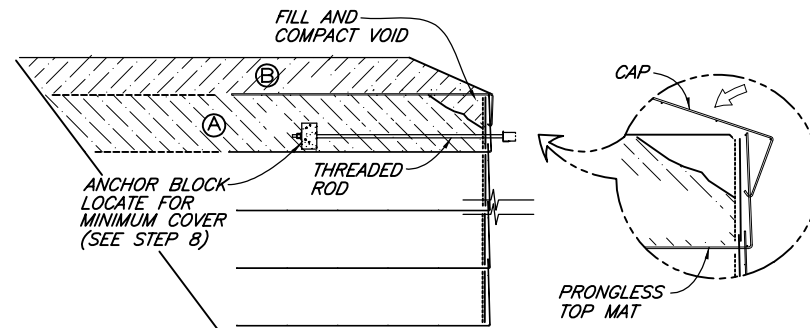
**STEP 6: TOP LIFT**

PLACE THE TOP LIFT PRONGLESS MAT, FACE MAT (WHERE OCCURS), AND BACKING MAT AND FILTER FABRIC. INSTALL ANCHOR BLOCKS AND THREADED RODS.

PLACE AND COMPACT BACKFILL IN AREA "A"

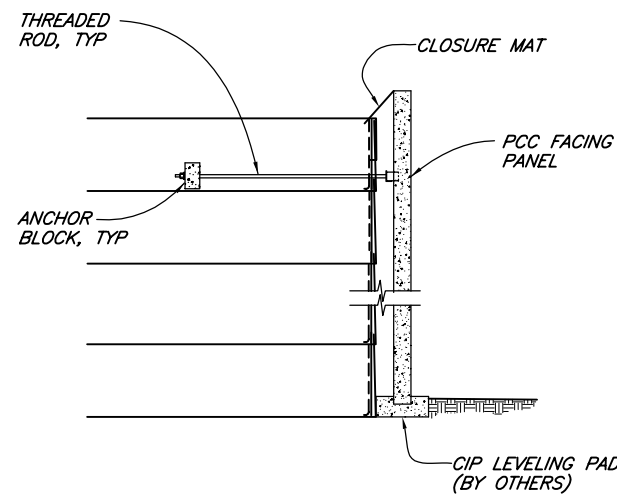
HOOK THE CAP OVER THE MIDDLE TRANSVERSE WIRE ON THE PRONGLESS MAT, AND ROTATE INTO PLACE.

BACKFILL "B" TO 1'-6" MINIMUM COVER OVER THE CAP.



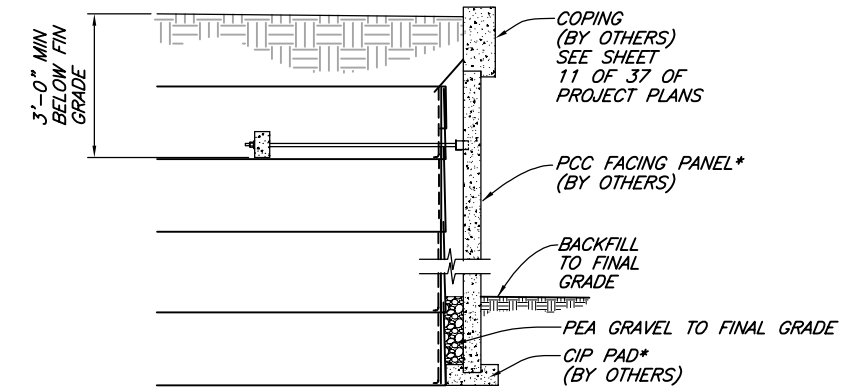
**STEP 7**

WAIT FOR SETTLEMENT PERIOD (PER CONTRACT SPECIFICATIONS) AND THEN POUR CIP LEVELING PAD TO ELEVATION SHOWN. INSTALL PCC FACING PANELS TO CIP PAD AND THREADED RODS FROM ANCHOR BLOCKS. PLACE CLOSURE MAT WITH BACKING MAT AND FILTER FABRIC.

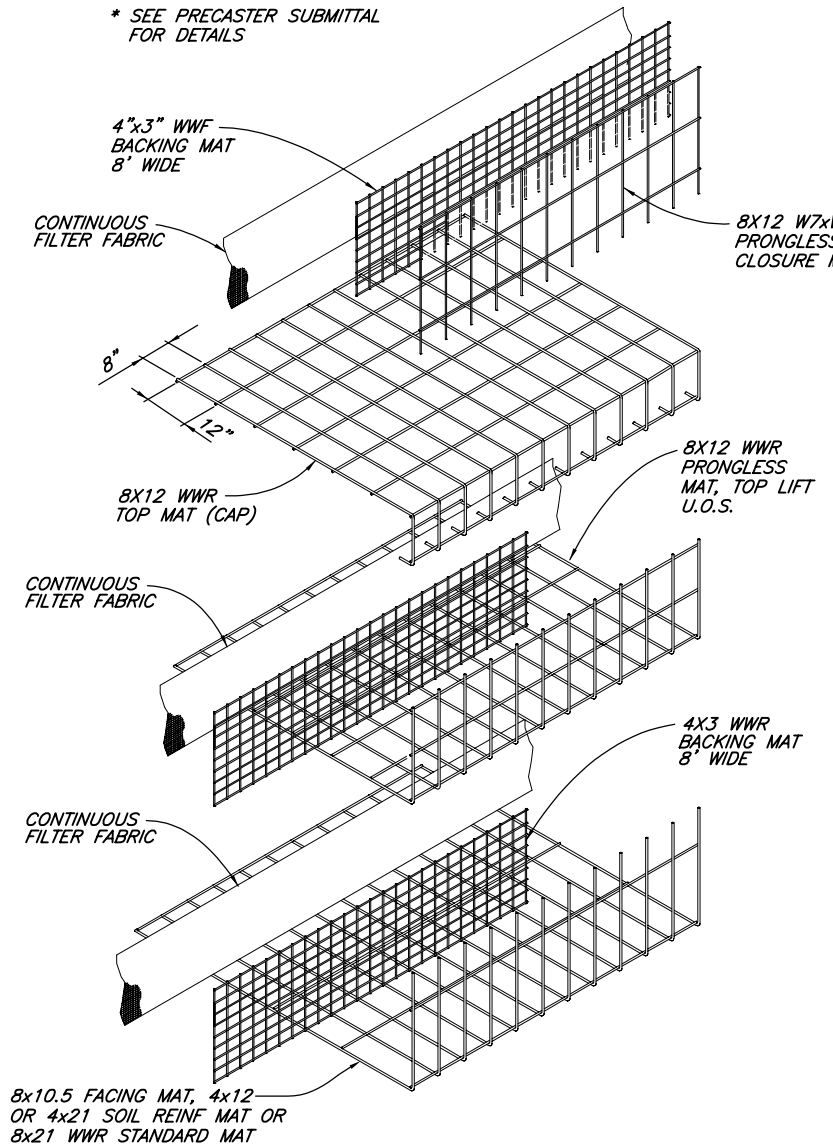


**STEP 8**

BACKFILL AT TOE TO FINAL GRADE. PLACE AND COMPACT BACKFILL AT CLOSURE MAT. FINISH TOP OF WALL PER PROJECT PLANS.



\* SEE PRECASTER SUBMITTAL FOR DETAILS



**WALL COMPONENTS**  
NOT TO SCALE

**CONSTRUCTION SEQUENCE**  
NOT TO SCALE

CAD: \\EUREKA\PROJECTS\2020\020090-1-84-ERS\DWGS\020090-184-ERS.DWG (HRW 200526 CE)

THE DESIGN CONTAINED ON THESE DRAWINGS IS BASED ON INFORMATION PROVIDED BY THE OWNER. ON THE BASIS OF THIS INFORMATION, THE HILFIKER COMPANY HAS DESIGNED, AND IS RESPONSIBLE FOR THE INTERNAL STABILITY OF THE STRUCTURE ONLY. EXTERNAL STABILITY, INCLUDING FOUNDATION AND SLOPE STABILITY, IS THE RESPONSIBILITY OF THE OWNER.



ERS  
**HILFIKER RETAINING WALLS**  
1902 Hilfiker Lane  
Eureka, CA 95503-5711  
TOLL-FREE 800.762.8962  
PH 707.443.5093 FAX 707.443.2891  
WEBSITE www.hilfiker.com E-MAIL info@hilfiker.com



VERIFY SCALES  
 BAR IS ONE INCH ON ORIGINAL DRAWING  
 IF NOT ONE INCH ON THIS SHEET, ADJUST SCALES ACCORDINGLY  
 812 W. WABASH AVE. EUREKA, CA. 95501 WWW.SHN-ENGR.COM 707-441-8855  
 SHN  
 IDAHO TRANSPORTATION DEPARTMENT  
 1-84 MIDDLETON ROAD OVERPASS FED AID# A022(618)  
 NAMPA, CANYON COUNTY, IDAHO  
**WALL COMPONENTS AND CONSTRUCTION SEQUENCE**  
 SHEET 7 OF 7  
 DATE 7/15/20  
 PROJ. NO. 020090