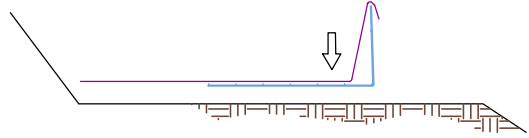
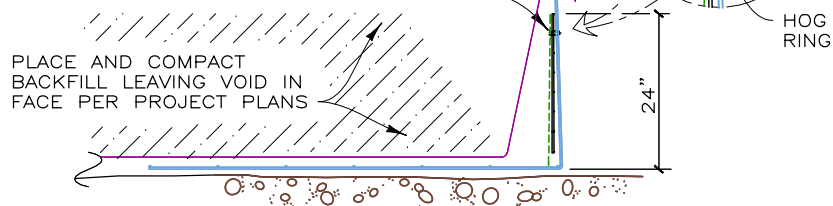


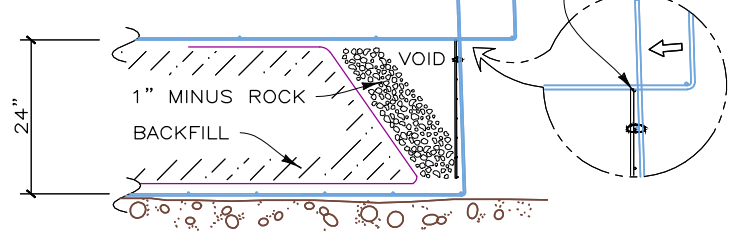
**STEP 1**  
PLACE THE FIRST COURSE OF FACING MATS ON PREPARED FOUNDATION.  
PLACE CONTINUOUS GEOGRID AS SHOWN.



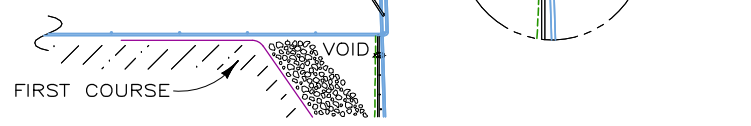
**STEP 2**  
PLACE THE BACKING MAT AND MIRAMESH OR FILTER FABRIC AGAINST THE INSIDE FACE OF THE FACING MAT. CLIP THE SECOND- TO-TOP TRANSVERSE WIRE ON THE BACKING MAT TO THE TOP TRANSVERSE WIRE ON THE FACING MAT.



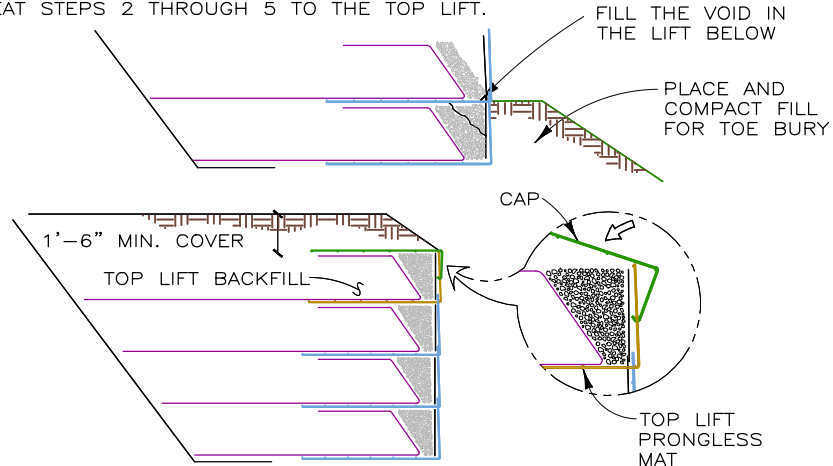
**STEP 3**  
BRING THE GEOGRID OVER THE FRONT AND TOP OF THE BACKFILL AS SHOWN. PLACE ROCK IN THE FACE OF THE WALL PER PROJECT PLANS. LEAVE A VOID AS SHOWN.



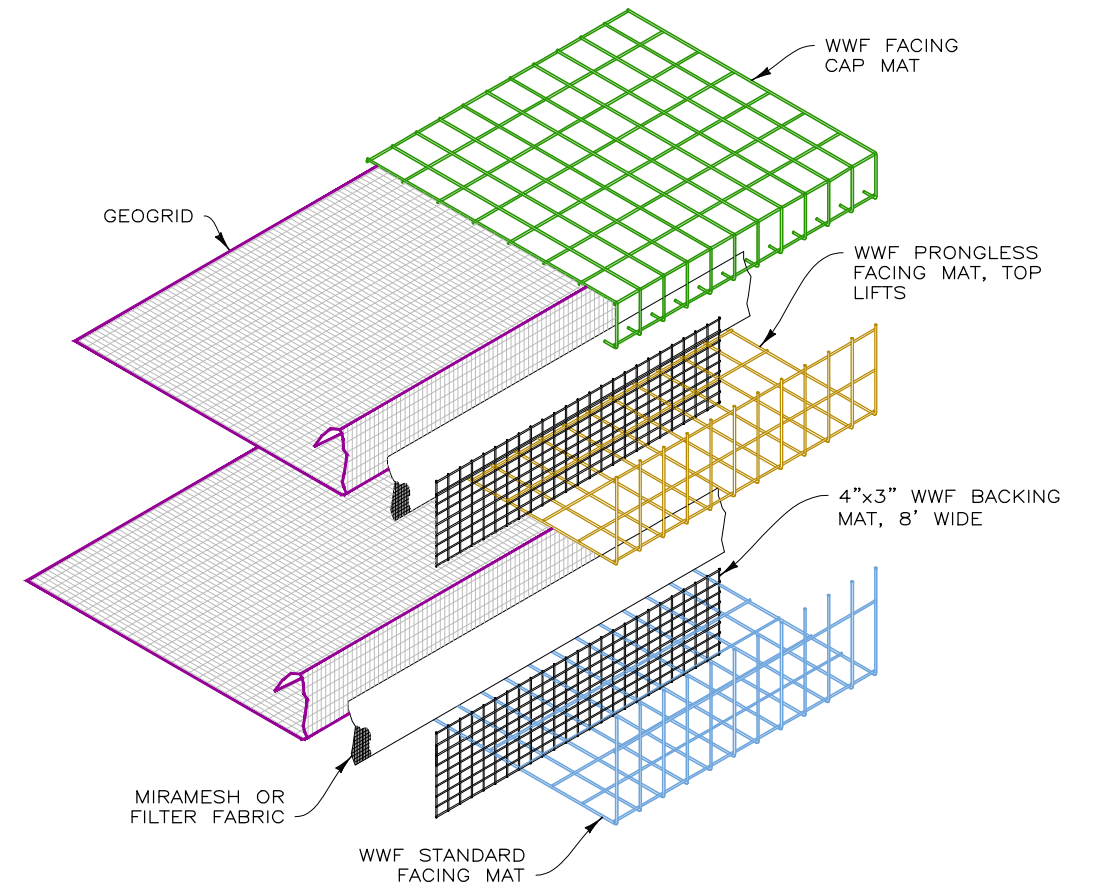
**STEP 4**  
HOOK THE BOTTOM TRANSVERSE WIRE OF THE BACKING MAT OVER THE VERTICAL PRONGS ON THE LOWER MAT. ROTATE THE BACKING MAT TO VERTICAL AND CLIP THE SECOND- TO-TOP TRANSVERSE WIRE ON THE BACKING MAT AND THE MIRAMESH TO THE TOP WIRE ON THE FACING MAT.



**STEP 5**  
INSTALL GEOGRID AS IN STEPS 1 AND 2. PLACE AND COMPACT THE BACKFILL AND ROCK TO THE BASE ELEVATION OF THE NEXT MAT. REPEAT STEPS 2 THROUGH 5 TO THE TOP LIFT.

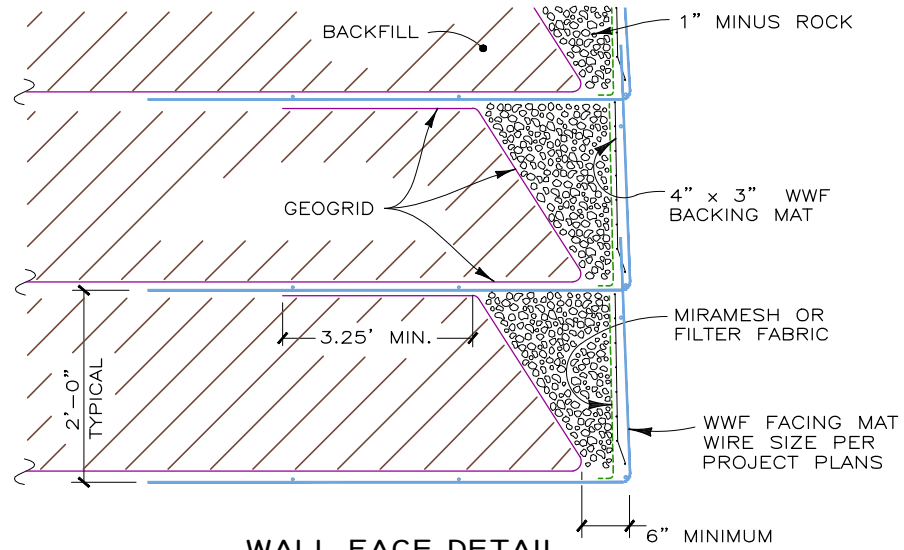


**STEP 6: TOP LIFT**  
PLACE THE TOP LIFT PRONGLESS MAT, GEOGRID, BACKING MAT AND MIRAMESH OR FILTER FABRIC. PLACE AND COMPACT BACKFILL AND ROCK IN THE TOP LIFT. HOOK THE CAP OVER THE MIDDLE TRANSVERSE WIRE ON THE PRONGLESS MAT, AND ROTATE INTO PLACE. PLACE AND COMPACT COVER OVER TOP MAT TO 1'-6" MINIMUM DEPTH.

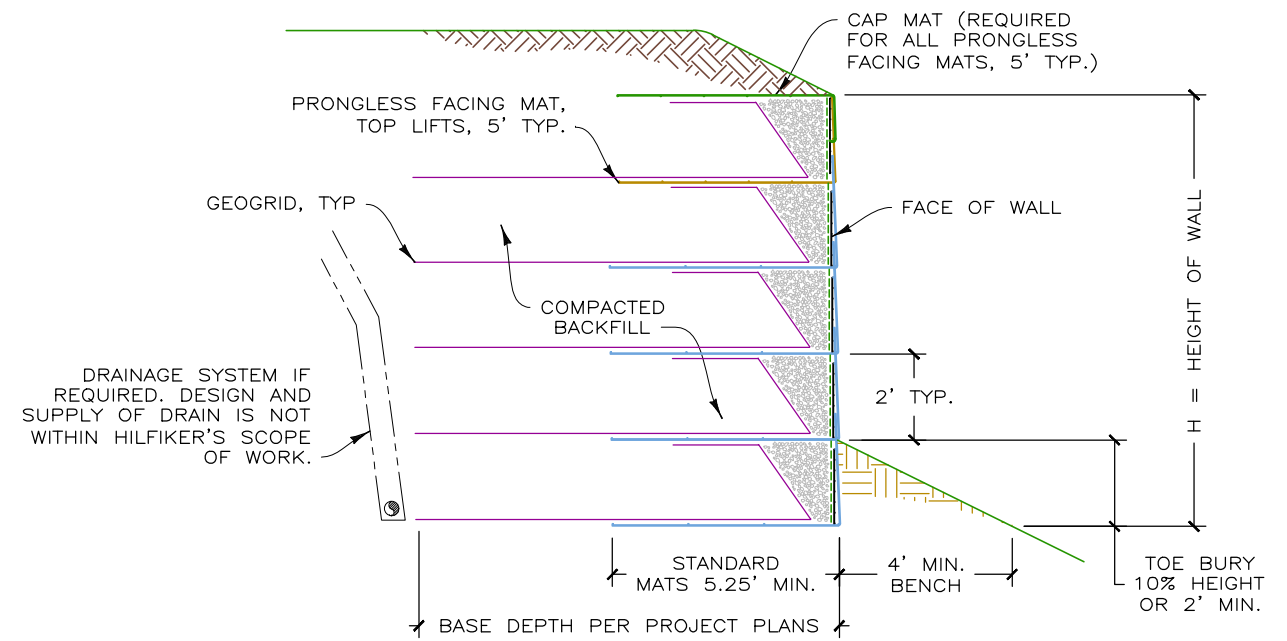


**WALL COMPONENTS**  
NOT TO SCALE

**CONSTRUCTION SEQUENCE**  
NOT TO SCALE



**WALL FACE DETAIL**  
NOT TO SCALE



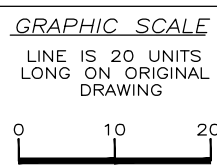
**TYPICAL SECTION - HYBRID WALL**  
NOT TO SCALE

WWF = WELDED WIRE FABRIC

HYBRID WALL STANDARD

THIS DRAWING IS FURNISHED SOLELY FOR THE USE OF OR IN CONNECTION WITH THIS PROJECT AND THE PROPRIETARY INFORMATION SHOWN HEREON IS NOT TO BE TRANSMITTED TO ANY OTHER ORGANIZATION WITHOUT SPECIFIC AUTHORIZATION BY THE HILFIKER COMPANY. HILFIKER RETAINING WALLS ARE PROTECTED BY ONE OR MORE OF THE FOLLOWING PATENTS: 243,613; 243,697; 288,616; 4,117,686; 4,329,089; 4,324,508; 4,391,557; 4,505,621; 4,343,318; 4,661,023; 4,856,939; 4,929,125; 5,076,735; 5,647,695; 5,722,799; 5,733,072; 6,357,970B1; 6,874,975B2; 7,033,118B2; AND OTHERS. OTHER PATENTS PENDING (2008)

REV. NO.	DATE	BY	DESCRIPTION



PROJ. MGR.  
DRAWN BY  
HRW  
REVIEWED BY  
HRW

**HILFIKER RETAINING WALLS**

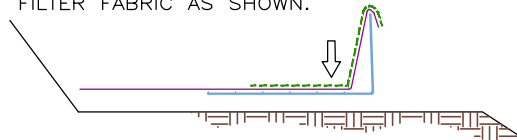
1902 Hilfiker Lane  
Eureka, CA 95503-5711  
TOLL-FREE 800.762.8962  
PH 707.443.5093 FAX 707.443.2891  
WEBSITE www.hilfiker.com E-MAIL info@hilfiker.com

SINCE 1902  
QUALITY PRODUCTS

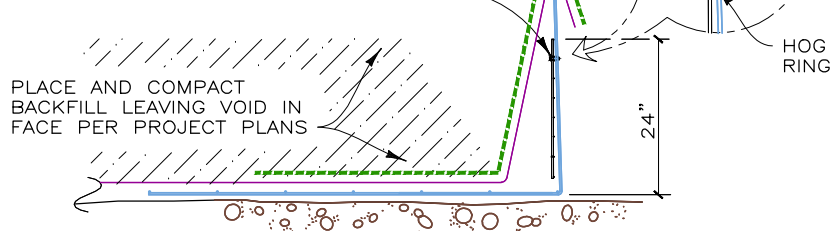
DWG DATE  
JUL 2022  
REVISION DATE  
SCALE  
NOTED

STANDARD DRAWING	PROJECT NO.
WELDED WIRE FACING SYSTEM WITH GEOGRID REINF.	--
<b>HYBRID RETAINING WALL SYSTEM</b>	SHEET
STANDARD DETAILS	1
	OF 3

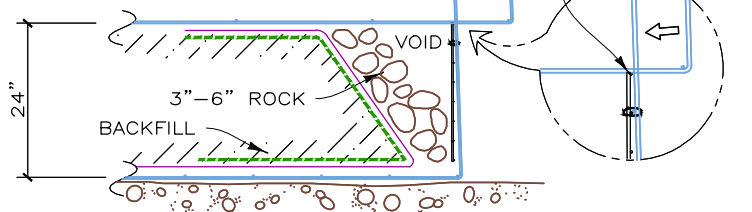
**STEP 1**  
PLACE THE FIRST COURSE OF FACING MATS ON PREPARED FOUNDATION.  
PLACE CONTINUOUS GEOGRID AND FILTER FABRIC AS SHOWN.



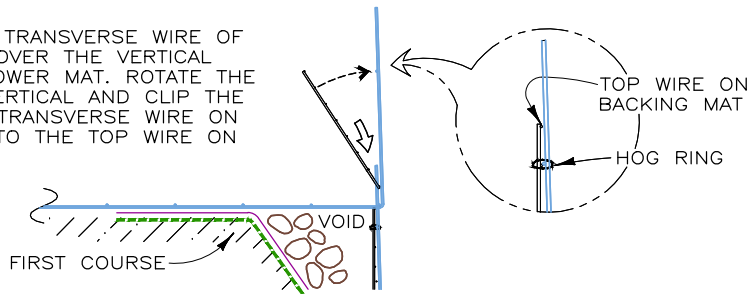
**STEP 2**  
PLACE THE BACKING MAT AGAINST THE INSIDE FACE OF THE FACING MAT. CLIP THE SECOND-TO-TOP TRANSVERSE WIRE ON THE BACKING MAT TO THE TOP TRANSVERSE WIRE ON THE FACING MAT.



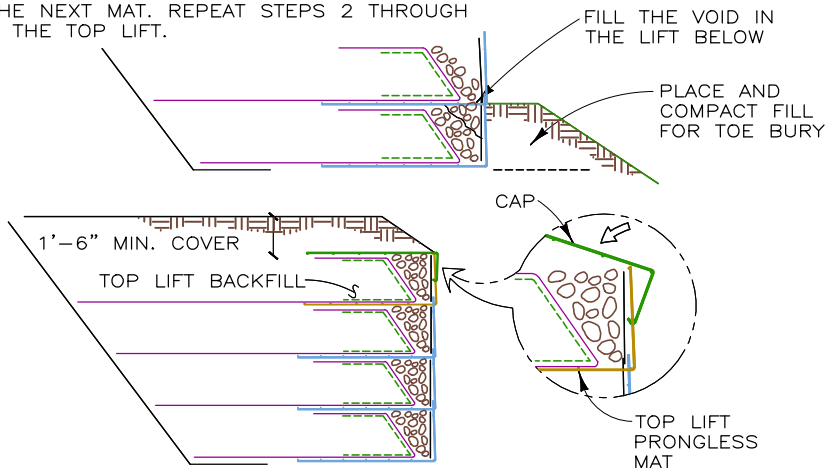
**STEP 3**  
BRING THE GEOGRID AND FILTER FABRIC OVER THE FRONT AND TOP OF THE BACKFILL AS SHOWN. PLACE THE ROCK IN THE FACE OF THE WALL PER PROJECT PLANS. LEAVE A VOID AS SHOWN.



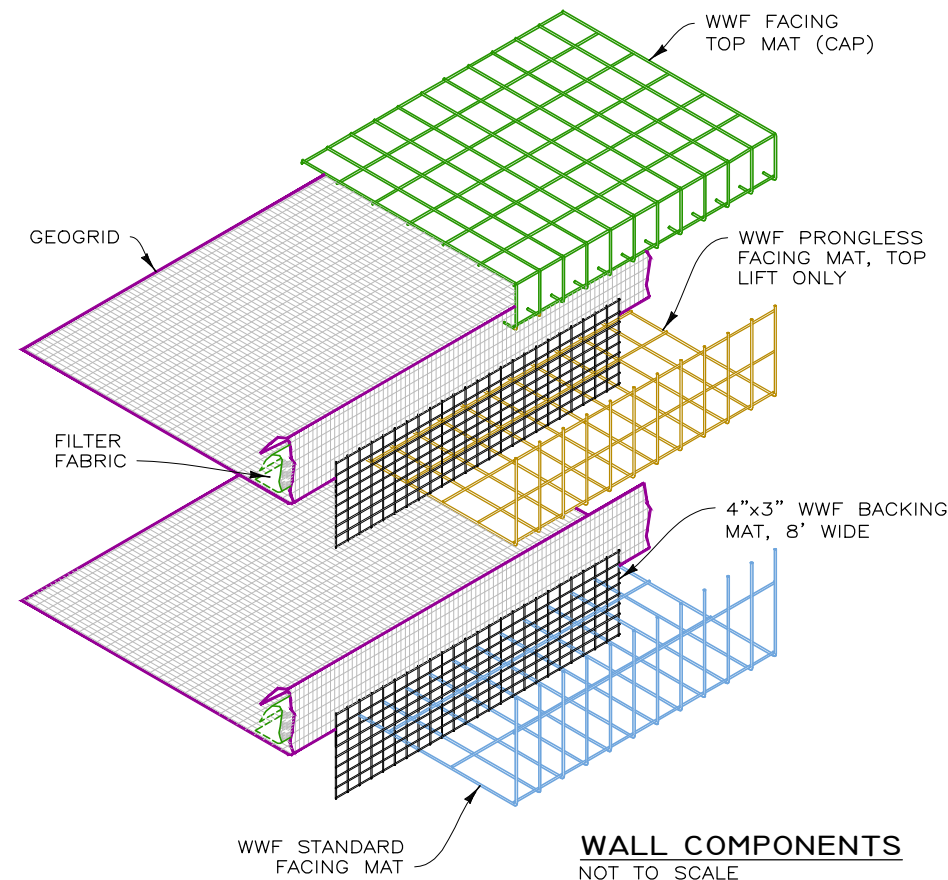
**STEP 4**  
HOOK THE BOTTOM TRANSVERSE WIRE OF THE BACKING MAT OVER THE VERTICAL PRONGS ON THE LOWER MAT. ROTATE THE BACKING MAT TO VERTICAL AND CLIP THE SECOND-TO-TOP TRANSVERSE WIRE ON THE BACKING MAT TO THE TOP WIRE ON THE FACING MAT.



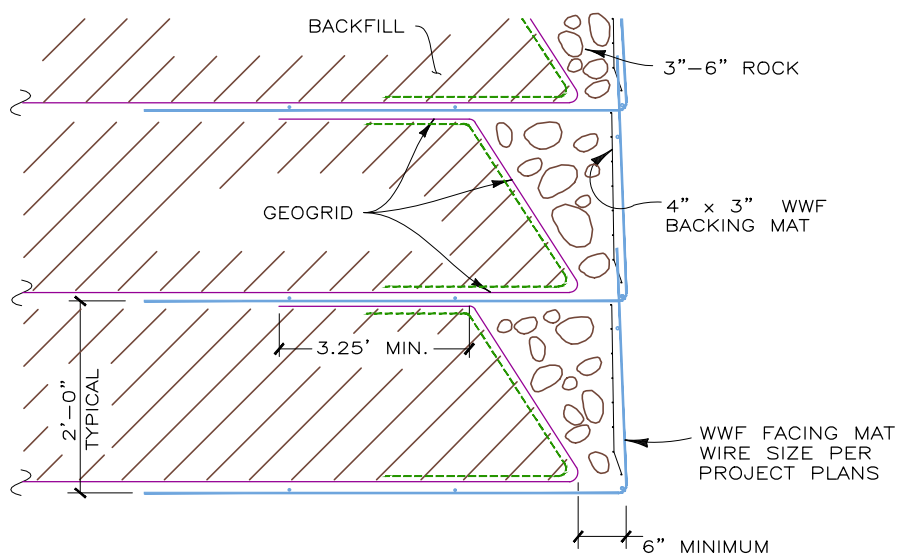
**STEP 5**  
INSTALL GEOGRID AND FILTER FABRIC AS IN STEPS 1 AND 2. PLACE AND COMPACT THE BACKFILL AND ROCK TO THE BASE ELEVATION OF THE NEXT MAT. REPEAT STEPS 2 THROUGH 5 TO THE TOP LIFT.



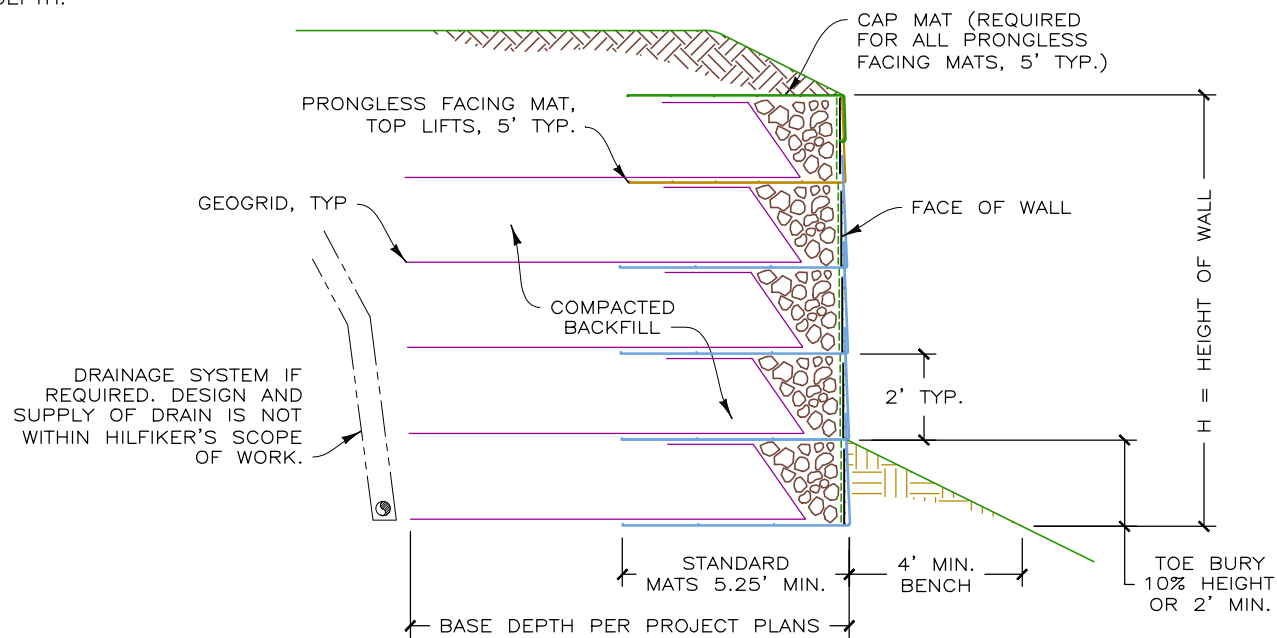
**STEP 6: TOP LIFT**  
PLACE THE TOP LIFT PRONGLESS MAT AND BACKING MAT. PLACE FINAL LAYER OF GEOGRID AND FILTER FABRIC. PLACE AND COMPACT BACKFILL AND ROCK IN THE TOP LIFT. HOOK THE CAP OVER THE MIDDLE TRANSVERSE WIRE ON THE PRONGLESS MAT, AND ROTATE INTO PLACE. PLACE AND COMPACT COVER OVER TOP MAT TO 1'-6" MINIMUM DEPTH.



**CONSTRUCTION SEQUENCE - ROCK FACE**  
NOT TO SCALE



**ROCK WALL FACE DETAIL**  
NOT TO SCALE



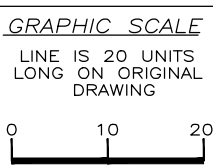
**TYPICAL SECTION - HYBRID WALL (ROCK FACE)**  
NOT TO SCALE

WWF = WELDED WIRE FABRIC

HYBRID WALL STANDARD

THIS DRAWING IS FURNISHED SOLELY FOR THE USE OF OR IN CONNECTION WITH THIS PROJECT AND THE PROPRIETARY INFORMATION SHOWN HEREON IS NOT TO BE TRANSMITTED TO ANY OTHER ORGANIZATION WITHOUT SPECIFIC AUTHORIZATION BY THE HILFIKER COMPANY. HILFIKER RETAINING WALLS ARE PROTECTED BY ONE OR MORE OF THE FOLLOWING PATENTS: 243,613; 243,697; 288,616; 4,117,686; 4,329,089; 4,324,508; 4,391,557; 4,505,621; 4,343,318; 4,661,023; 4,856,939; 4,929,125; 5,076,735; 5,647,695; 5,722,799; 5,733,072; 6,357,970B1; 6,874,975B2; 7,033,118B2; AND OTHERS. OTHER PATENTS PENDING (2008)

REV. NO.	DATE	BY	DESCRIPTION



PROJ. MGR.  
DRAWN BY HRW  
REVIEWED BY HRW

**HILFIKER RETAINING WALLS**

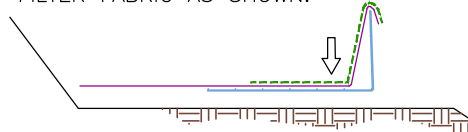
1902 Hilfiker Lane  
Eureka, CA 95503-5711  
TOLL-FREE 800.762.8962  
PH 707.443.5093 FAX 707.443.2891  
WEBSITE www.hilfiker.com E-MAIL info@hilfiker.com

SINCE 1902  
QUALITY PRODUCTS

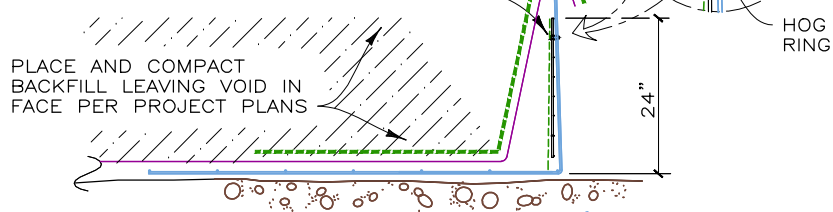
DWG DATE JUL 2022  
REVISION DATE  
SCALE NOTED

STANDARD DRAWING	PROJECT NO. ---
WELDED WIRE FACING SYSTEM WITH GEOGRID REINF.	SHEET 2 OF 3
<b>ROCK FACE RETAINING WALL SYSTEM</b>	
STANDARD DETAILS	

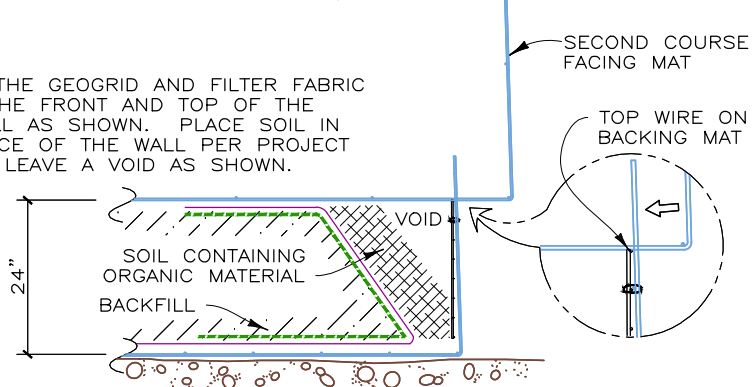
**STEP 1**  
 PLACE THE FIRST COURSE OF FACING MATS ON PREPARED FOUNDATION.  
 PLACE CONTINUOUS GEOGRID AND FILTER FABRIC AS SHOWN.



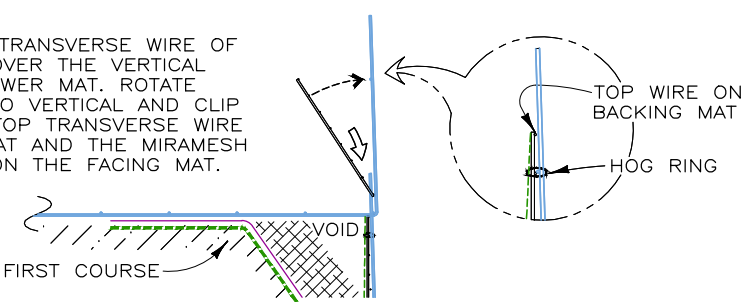
**STEP 2**  
 PLACE THE BACKING MAT AND MIRAMESH AGAINST THE INSIDE FACE OF THE FACING MAT. CLIP THE SECOND-TO-TOP TRANSVERSE WIRE ON THE BACKING MAT TO THE TOP TRANSVERSE WIRE ON THE FACING MAT.



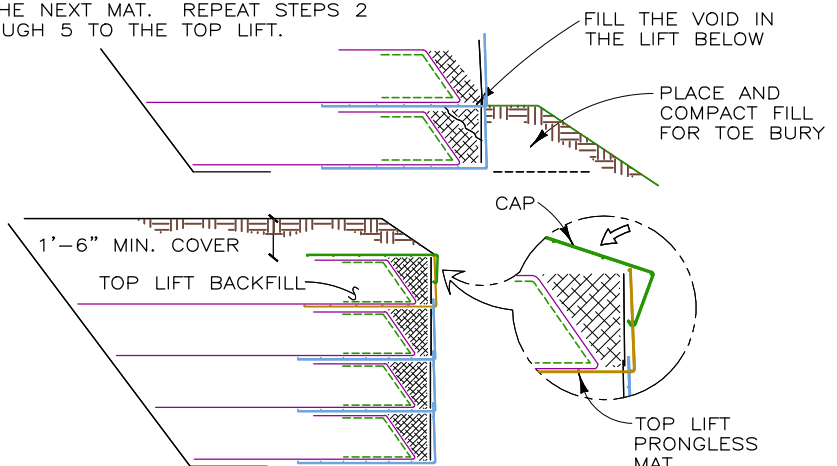
**STEP 3**  
 BRING THE GEOGRID AND FILTER FABRIC OVER THE FRONT AND TOP OF THE BACKFILL AS SHOWN. PLACE SOIL IN THE FACE OF THE WALL PER PROJECT PLANS. LEAVE A VOID AS SHOWN.



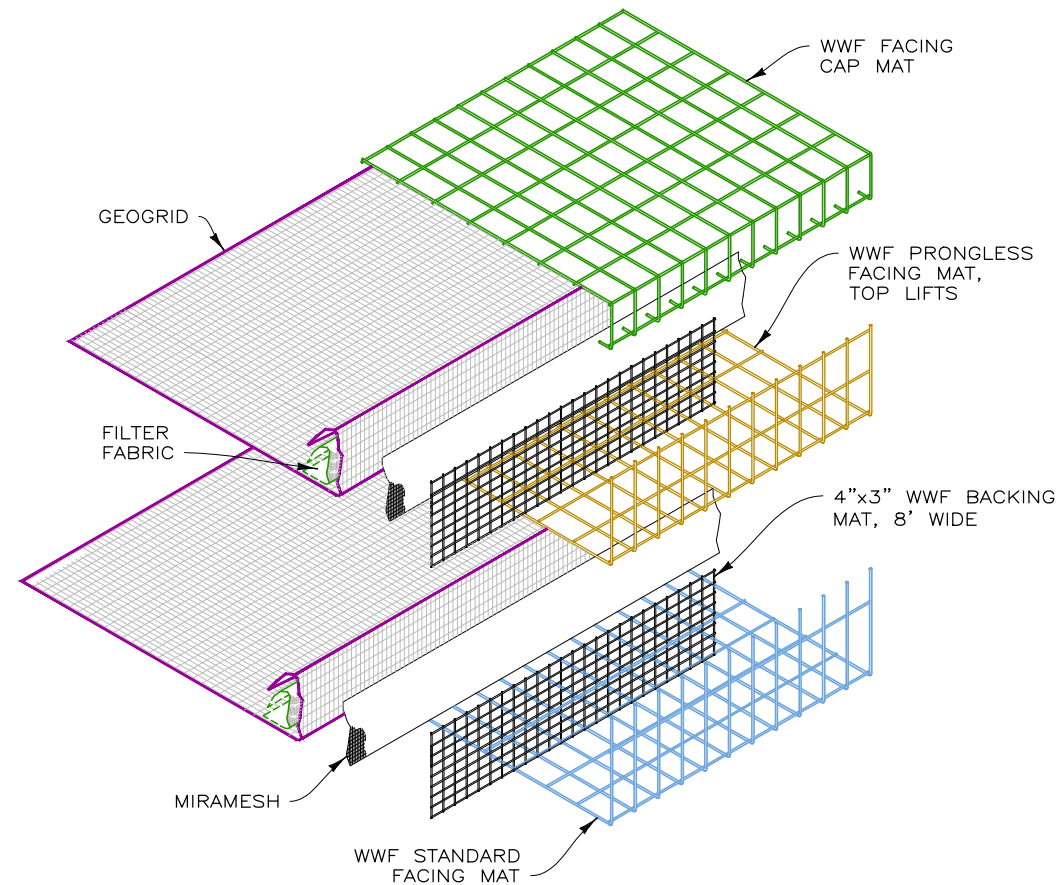
**STEP 4**  
 HOOK THE BOTTOM TRANSVERSE WIRE OF THE BACKING MAT OVER THE VERTICAL PRONGS ON THE LOWER MAT. ROTATE THE BACKING MAT TO VERTICAL AND CLIP THE SECOND-TO-TOP TRANSVERSE WIRE ON THE BACKING MAT AND THE MIRAMESH TO THE TOP WIRE ON THE FACING MAT.



**STEP 5**  
 INSTALL GEOGRID AND FILTER FABRIC AS IN STEPS 1 AND 2. PLACE AND COMPACT THE BACKFILL AND SOIL TO THE BASE ELEVATION OF THE NEXT MAT. REPEAT STEPS 2 THROUGH 5 TO THE TOP LIFT.

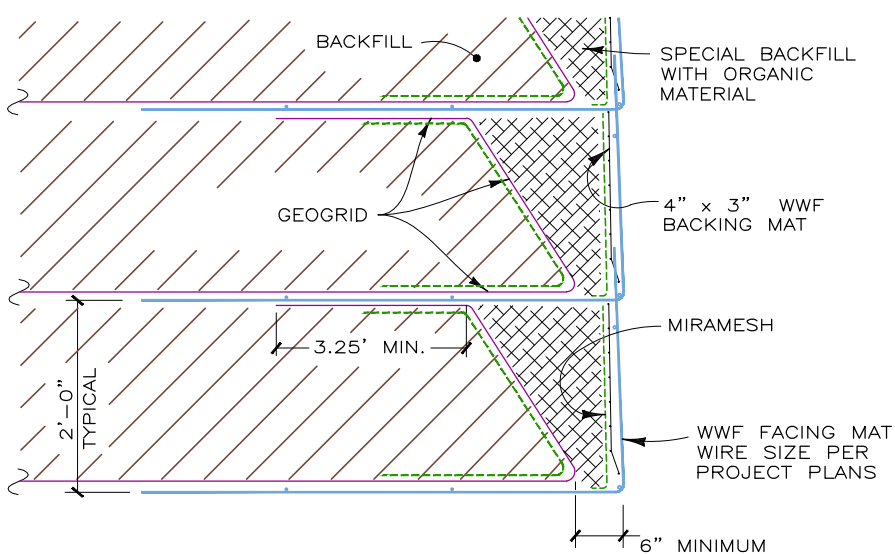


**STEP 6: TOP LIFT**  
 PLACE THE TOP LIFT PRONGLESS MAT, BACKING MAT, AND MIRAMESH. PLACE FINAL LAYER OF GEOGRID AND FILTER FABRIC. PLACE AND COMPACT BACKFILL AND SOIL IN THE TOP LIFT. HOOK THE CAP OVER THE MIDDLE TRANSVERSE WIRE ON THE PRONGLESS MAT, AND ROTATE INTO PLACE. PLACE AND COMPACT COVER OVER TOP MAT TO 1'-6" MINIMUM DEPTH.

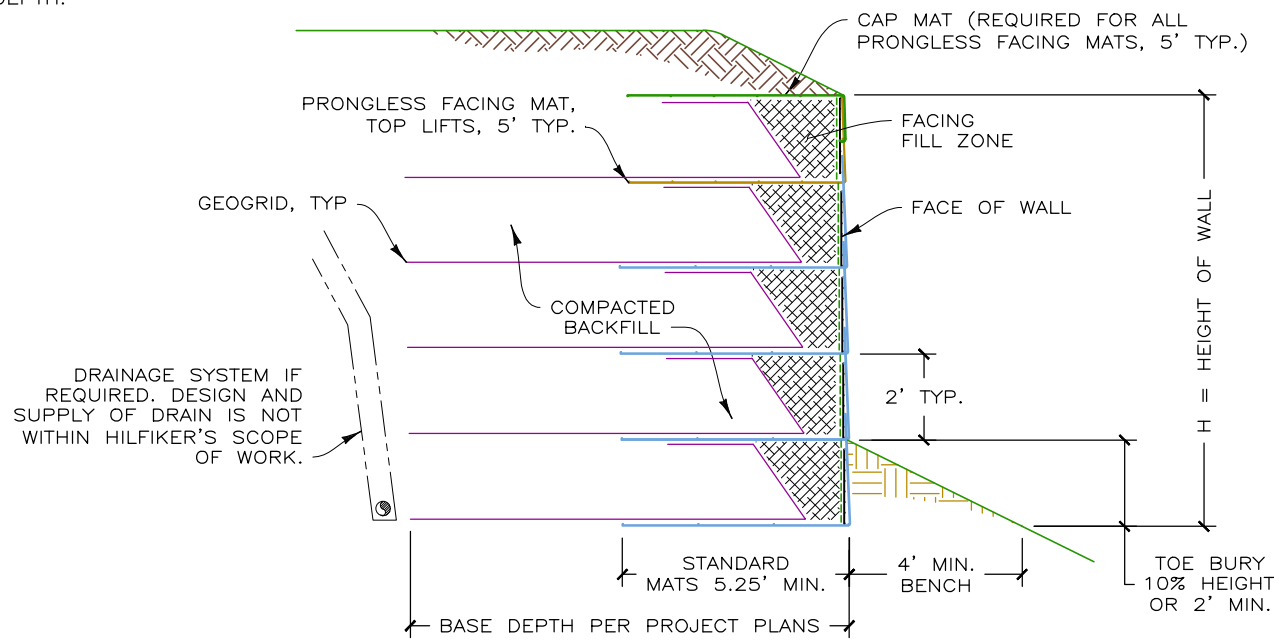


**WALL COMPONENTS**  
 NOT TO SCALE

**CONSTRUCTION SEQUENCE - VEGETATIVE FACE**  
 NOT TO SCALE



**VEGETATIVE WALL FACE DETAIL**  
 NOT TO SCALE



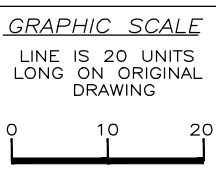
**TYPICAL SECTION - HYBRID WALL (VEGETATIVE FACE)**  
 NOT TO SCALE

WWF = WELDED WIRE FABRIC

HYBRID WALL STANDARD

THIS DRAWING IS FURNISHED SOLELY FOR THE USE OF OR IN CONNECTION WITH THIS PROJECT AND THE PROPRIETARY INFORMATION SHOWN HEREON IS NOT TO BE TRANSMITTED TO ANY OTHER ORGANIZATION WITHOUT SPECIFIC AUTHORIZATION BY THE HILFIKER COMPANY. HILFIKER RETAINING WALLS ARE PROTECTED BY ONE OR MORE OF THE FOLLOWING PATENTS: 243,613; 243,697; 288,616; 4,117,686; 4,329,089; 4,324,508; 4,391,557; 4,505,621; 4,343,318; 4,661,023; 4,856,939; 4,929,125; 5,076,735; 5,647,695; 5,722,799; 5,733,072; 6,357,970B1; 6,874,975B2; 7,033,118B2; AND OTHERS. OTHER PATENTS PENDING (2008)

REV. NO.	DATE	BY	DESCRIPTION



PROJ. MGR.  
 DRAWN BY HRW  
 REVIEWED BY HRW

**HILFIKER RETAINING WALLS**

1902 Hilfiker Lane  
 Eureka, CA 95503-5711  
 TOLL-FREE 800.762.8962  
 PH 707.443.5093 FAX 707.443.2891  
 WEB SITE www.hilfiker.com E-MAIL info@hilfiker.com

SINCE 1902  
 QUALITY PRODUCTS

DWG DATE JUL 2022  
 REVISION DATE  
 SCALE NOTED

STANDARD DRAWING	PROJECT NO. --
WELDED WIRE FACING SYSTEM WITH GEOGRID REINF.	SHEET 3
VEGETATIVE FACE RETAINING WALL SYSTEM	OF 3
STANDARD DETAILS	