



MANTI TEMPLE

Eureka Reinforced Soil Retaining Wall

Manti, Sanpete County, Utah

Owner: Church of Jesus Christ of Latter-Day Saints

Contractor: Circle C Construction

Designed by: Geotechnical Design Services

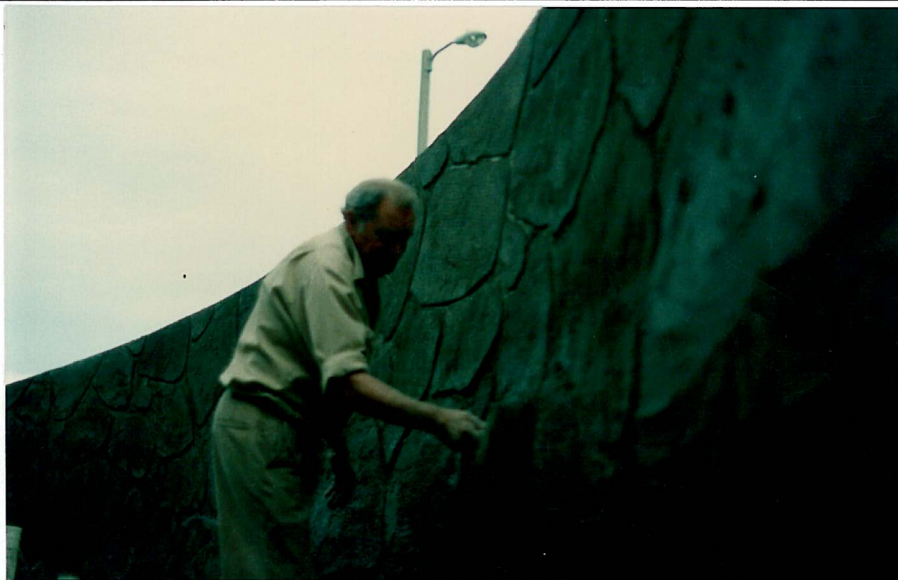
July 1997 5,424 Sq. Ft Wire Wall Face



P.O. Box 2012 Eureka, CA - 95502-2012
 Phone (707)443-5093 Fax (707)443-2891
 Toll Free (800)762-8962 email info@hilfiker.com
 web: <http://www.hilfiker.com>

HILFIKER RETAINING WALLS





Dec. 2000



P.O. Box 2012 Eureka, CA - 95502-2012
 Phone (707)443-5093 Fax (707)443-2891
 Toll Free (800)762-8962 email info@hilfiker.com
 web: <http://www.hilfiker.com>

HILFIKER RETAINING WALLS



EUREKA BEAR GROTTO
Cantilevered Welded Wire Retaining Wall
Shotcrete Facing, Mortar-troweled Finish
 Sequoia Park Zoo, Eureka, California
 1982



PORT OF THE DALLES

Eureka Reinforced Soil Embankment (E.R.S.)
 Columbia River Highway, Wasco County, Oregon

Owner: Oregon Department of Transportation

Designed by: SHN Consulting Engineers

Contractor: Mocon Corp. / NB Hatch

January 1997 47,488 Sq. Ft



P.O. Box 2012 Eureka, CA - 95502-2012
 Phone (707)443-5093 Fax (707)443-2891
 Toll Free (800)762-8962 email info@hilfiker.com

HILFIKER RETAINING WALLS





THE ADMIRALTY

Welded Wire Retaining Walls with Simulated Rock Facing
 (Shotcrete Finish over Sculptured Wire Framework)
 Dana Point, California

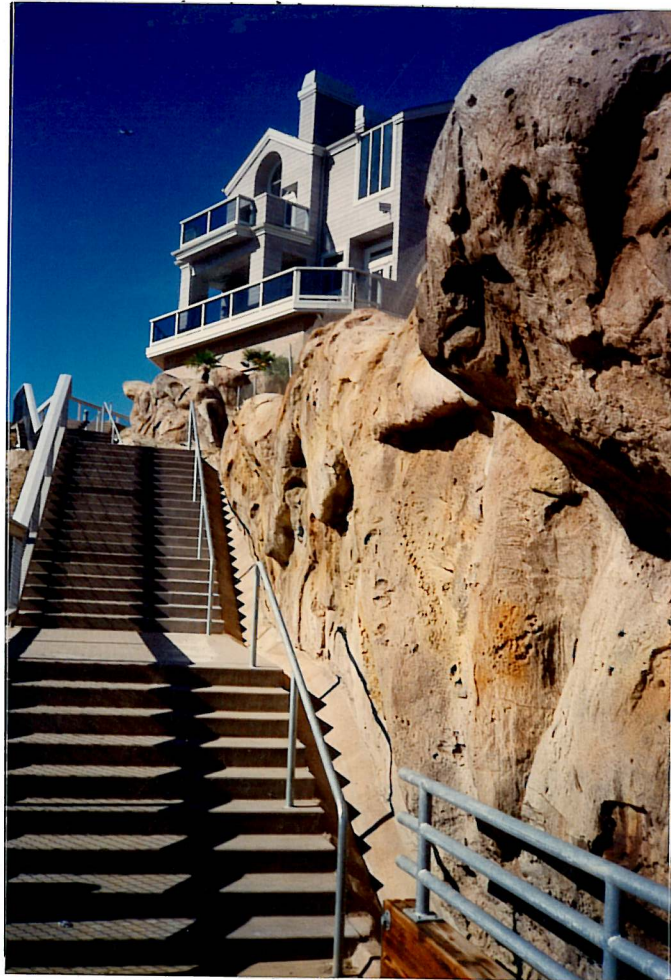
Contractor: Pulte Home Corp (Prime), Baker Construction (Sub)
 Owner: Private Engineer: SHN & Associates
 Fall 1988 - Spring 1989 23,000 Sq. Ft.



P.O. Box 2012 Eureka, CA - 95502-2012
 Phone (707)443-5093 Fax (707)443-2891
 Toll Free (800)762-8962 email info@hilfiker.com
 web: <http://www.hilfiker.com>

HILFIKER RETAINING WALLS





The Admiralty, Dana Point, CA. Welded Wire Wall with simulated rock facing. Pulte Homes, CME, Baker Const.



P.O. Box 2012 Eureka, CA - 95502-2012
 Phone (707)443-5093 Fax (707)443-2891
 Toll Free (800)762-8962 email info@hilfiker.com
 web: <http://www.hilfiker.com>



HILFIKER RETAINING WALLS

THE ADMIRALTY

Welded Wire Retaining Walls with Simulated Rock Facing
 (Shotcrete Finish over Sculptured Wire Framework)

Dana Point, California

Contractor: Pulte Home Corp (Prime), Baker Construction (Sub)

Owner: Private Engineer: SHN & Associates

Fall 1988 - Spring 1989 23,000 Sq. Ft.



CALL OF THE CANYON

Eureka Reinforced Soil Embankment (13,152 Sq. Ft.)

SR 89A, Prescott-Flagstaff Hwy, South of Flagstaff

Arizona Department of Transportation

Contractor: Ames Construction Inc.

Engineer: ADOT and MacIntosh Engineering and Development

May 1996



HILFIKER RETAINING WALLS



P.O. Box 2012 - Eureka, CA - 95502-2012 - Ph. (707)443-5093 - Fax (707)443-2891 - Toll Free (800)762-8962



CALL OF THE CANYON

**Eureka Reinforced Soil Embankment (13,152 Sq. Ft.)
 SR 89A, Prescott-Flagstaff Hwy, South of Flagstaff
 Arizona Department of Transportation**

Contractor: Ames Construction Inc.

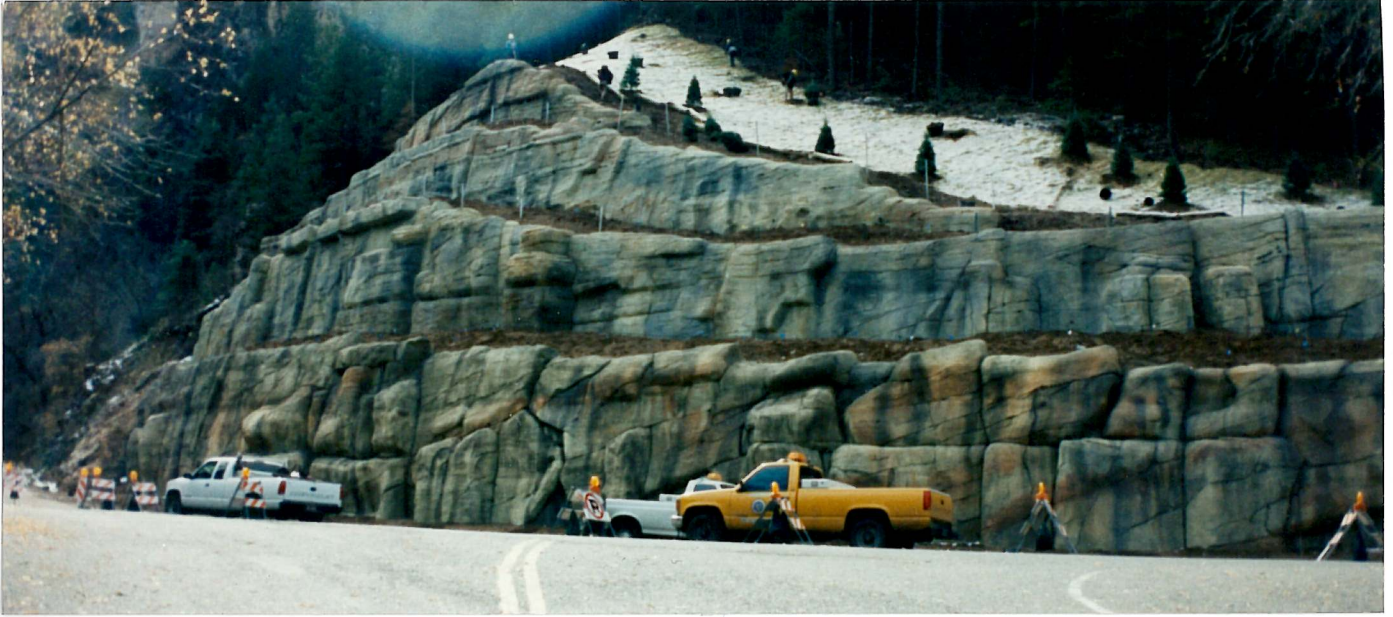
**Engineer: ADOT and MacIntosh Engineering and Development
 May 1996**



HILFIKER RETAINING WALLS



P.O. Box 2012 - Eureka, CA - 95502-2012 - Ph. (707)443-5093 - Fax (707)443-2891 - Toll Free (800)762-8962



Jan 00 HRW950707AE

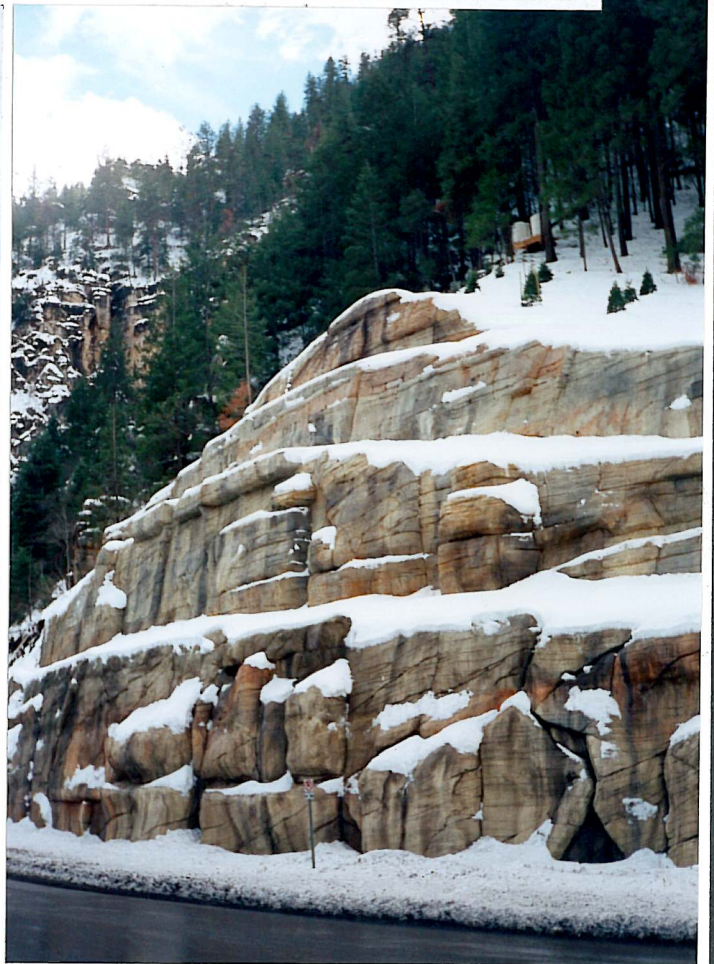
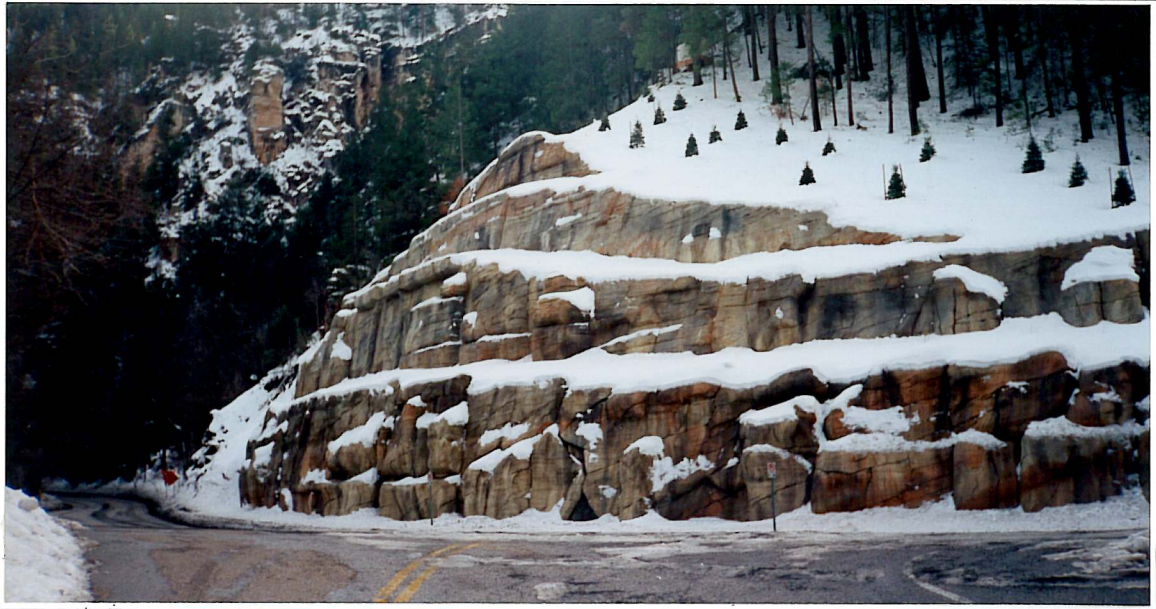


HILFIKER RETAINING WALLS

P.O. Box 2012 Eureka, CA - 95502-2012
 Phone (707)443-5093 Fax (707)443-2891
 Toll Free (800)762-8962 email info@hilfiker.com



CALL OF THE CANYON
Eureka Reinforced Soil Retaining Wall
 Painted, Hand Carved Shotcrete and GFRC Panels
 S.R. 89, Prescott-Flagstaff Hwy, South of Flagstaff, AZ
 Arizona Department of Transportation
 Designed by: ADOT & MacIntosh Engineering and Development
 Contractor: Ames Construction, Inc.
 May 1996 13,152 Sq. Ft



CALL OF THE CANYON

Eureka Reinforced Soil Embankment (13,152 Sq. Ft.)

SR 89A, Prescott-Flagstaff Hwy, South of Flagstaff

Arizona Department of Transportation

Contractor: Ames Construction Inc.

Engineer: ADOT and MacIntosh Engineering and Development

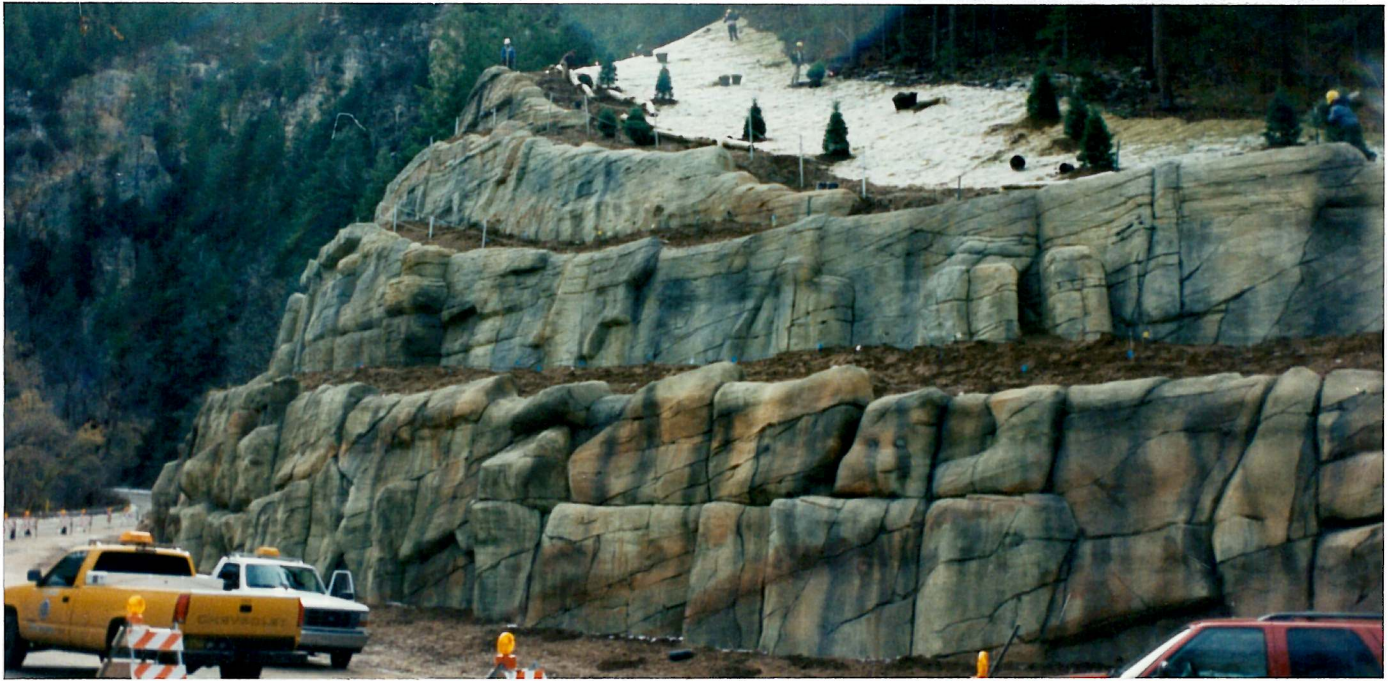
May 1996



HILFIKER RETAINING WALLS



P.O. Box 2012 - Eureka, CA - 95502-2012 - Ph. (707)443-5093 - Fax (707)443-2891 - Toll Free (800)762-8962



CALL OF THE CANYON
Eureka Reinforced Soil Retaining Wall
Painted, Hand-Carved Shotcrete and GFRC Panels
 SR 89, Prescott-Flagstaff Hwy, South of Flagstaff, Arizona
 Owner: Arizona D.O.T. Contractor: Ames Construction, Inc.
 Engineer: ADOT and MacIntosh Engineering & Development
 May 1996 13,152 Sq. Ft.

P.O. Box 2012 Eureka, CA - 95502-2012
 Phone (707)443-5093 Fax (707)443-2891 Toll Free (800)762-8962
 email info@hilfiker.com web: <http://www.hilfiker.com>

HILFIKER RETAINING WALLS





EMMONS ROAD
Welded Wire Retaining Wall with Stacked Rock Facing
 Town of Mount Crested Butte, Colorado
 Engineer: Banner Assoc. (Civil) & SHB (Wall)
 Contractor: Baker Construction, Inc.
 April 1991 7,536 Sq. Ft. Wall Face

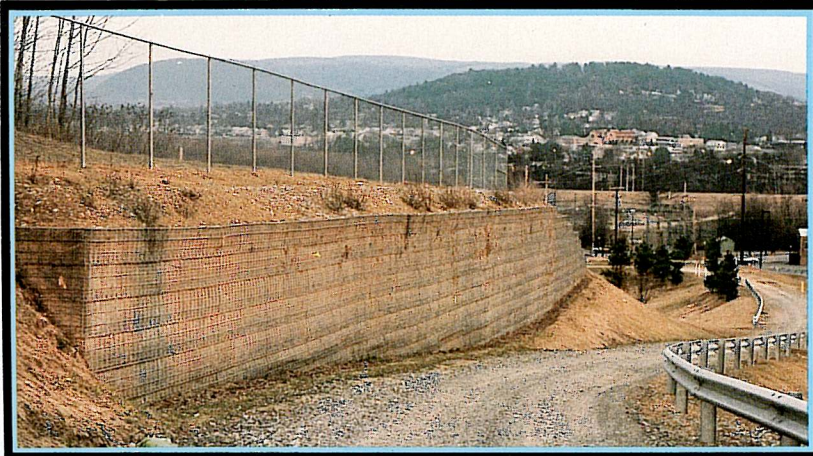


P.O. Box 2012 Eureka, CA - 95502-2012
 Phone (707)443-5093 Fax (707)443-2891
 Toll Free (800)762-8962 email info@hilfiker.com
 web: <http://www.hilfiker.com>

HILFIKER RETAINING WALLS



↓ WWW -
 ENDICOTT,
 NY. Private
 Project. Contr.:
 Whiting-Turner
 & Parlor City
 Const.



WWW WITH ROCK FACE - SANTA ROSA, CA. Private Project. Contr.: N.V.E. & North Bay Const.



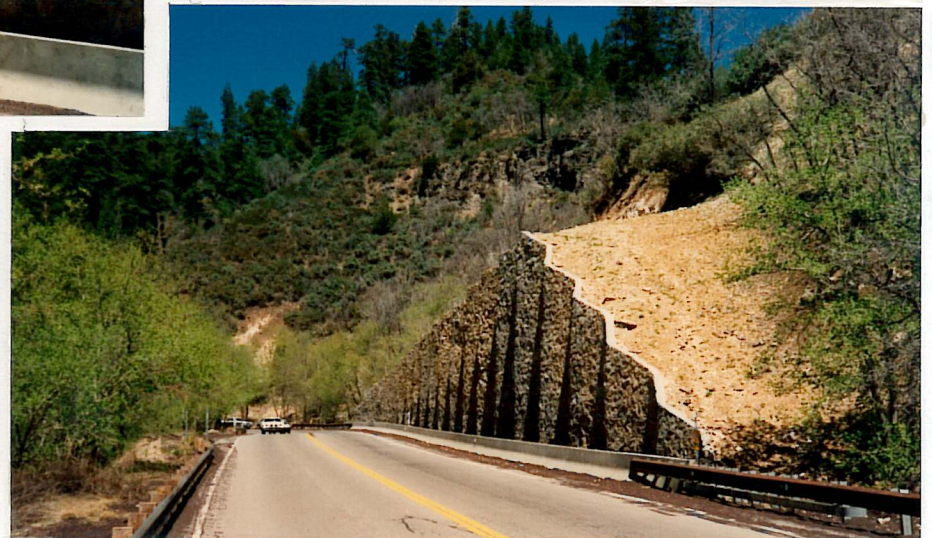
→ WWW W/ROCK
 FACE - TELLURIDE,
 CO. Private Project.
 Contr.: Baker Const.



HILFIKER RETAINING WALLS



P.O. Drawer 2012 • 3900 Broadway • Eureka, CA 95501 • (707) 443-5093 • CA Toll Free (800) 762-7967 • U.S. Toll Free (800) 762-8962



HILFIKER RETAINING WALLS

P.O. Box 2012 Eureka, CA - 95602-2012
 Phone (707)443-5093 Fax (707)443-2891
 Toll Free (800)762-8962 email info@hilfiker.com
 web: <http://www.hilfiker.com>



**OAK CREEK CANYON, Prescott-Flagstaff Highway, U.S. 89A
 Eureka Reinforced Soil Embankment with Rock Face**

Arizona Department of Transportation
 Contractor: Pebble Haulers and Baker Construction
 Designed by: Arizona D.O.T. and SHN & Associates
 April 1988 8,064 Sq. Ft



HIGHLAND (ZOO) INTERCHANGE
Eureka Reinforced Soil with Cast-in-Place Face
 U.S. 26, West of Portland

Oregon Department of Transportation
 Contractor: Max J. Kuney Company Engineer: Oregon D.O.T. and SHN Consulting Engineers
 March 1985

P.O. Box 2012 Eureka, CA - 95502-2012
 Phone (707)443-5093 Fax (707)443-2891 Toll Free (800)762-8962
 email info@hilfiker.com web: <http://www.hilfiker.com>

HILFIKER RETAINING WALLS





Feb 97 HRW941223AW



P.O. Box 2012 - Eureka, CA - 95502-2012
 Phone (707)443-5093
 Fax (707)443-2891 - Toll Free (800)762-8962

HILFIKER RETAINING WALLS



PALOMA PASEO, 140th ST. & SHEA BLVD.

Eureka Reinforced Soil Retaining Wall

Maricopa County, Scottsdale, Arizona

Owner: Dale Webb's Coventry Homes

Designed by: Gilbertson Assoc. Inc., and SHN Consulting Engrs.

Contractor: Hunter Contracting Company

July 1995

8152 Sq. Ft



Feb 97 HIRW941223AW



P.O. Box 2012 - Eureka, CA - 95502-2012
 Phone (707)443-5093
 Fax (707)443-2891 - Toll Free (800)762-8962

HILFIKER RETAINING WALLS



PALOMA PASEO, 140th ST. & SHEA BLVD.

Eureka Reinforced Soil Retaining Wall

Maricopa County, Scottsdale, Arizona

Owner: Dale Webb's Coventry Homes

Designed by: Gilbertson Assoc. Inc., and SHN Consulting Engrs.

Contractor: Hunter Contracting Company

July 1995

8152 Sq. Ft



WEST POINT TREATMENT PLANT
 Secondary Treatment Facilities
ERS Wall with Full Height Precast Panels

Owner: Municipality of Metropolitan Seattle
 Wall Design: Golder & Associates Contractor: Ames Construction
 Summer/Fall 1993 37,916 Sq. Ft.

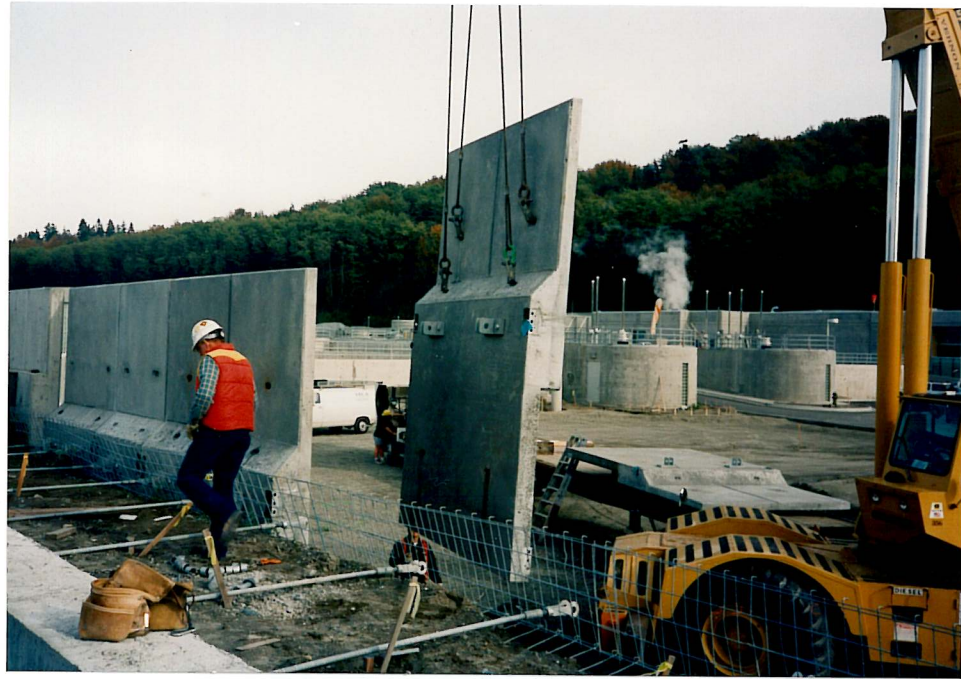


P.O. Box 2012 - Eureka, CA - 95502-2012
 Phone (707) 443-5093
 Fax (707) 443-2891 - Toll Free (800)762-8962



HILFIKER RETAINING WALLS

Feb.99 910920-1



**WESTPOINT TREATMENT PLANT
SECONDARY TREATMENT FACILITIES**

**Eureka Reinforced Soil (E.R.S.) Retaining Walls (23,300 sq. ft.)
Municipality of Metropolitan Seattle, Seattle, Washington**

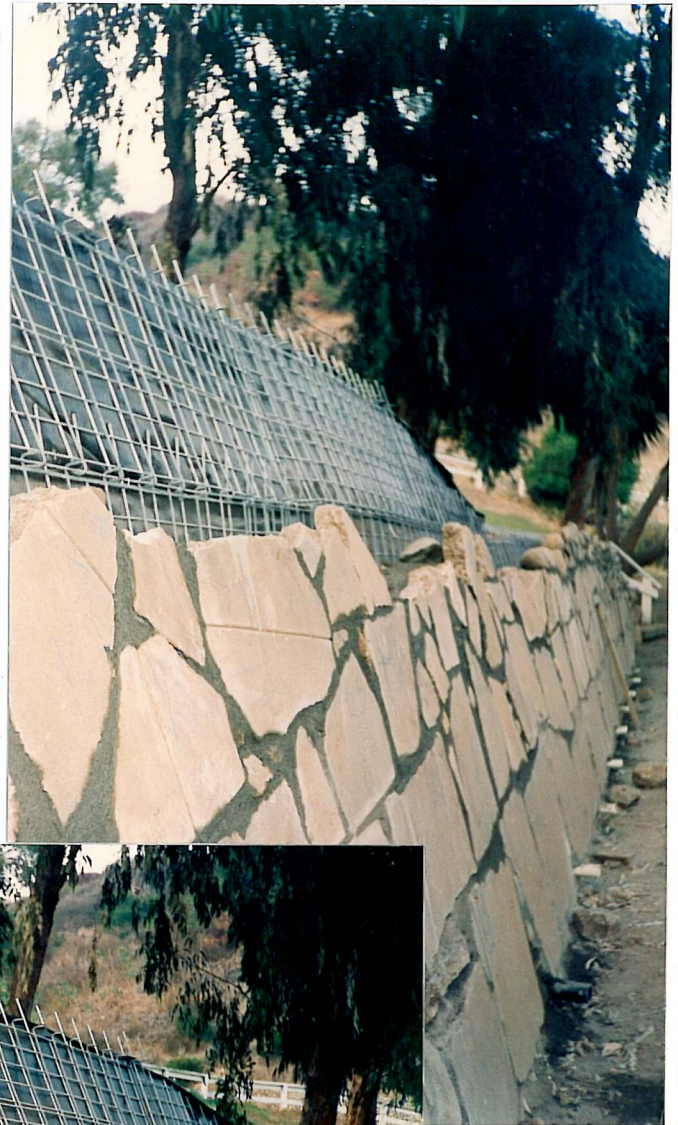
Engineer: Golder Associates
Contractor: Ames Construction
1993 - 1994



P.O. Box 2012 - Eureka, CA - 95502-2012
Ph. (707)443-5093
Fax (707)443-2891 - Toll Free (800)762-8962



HILFIKER RETAINING WALLS



WILL ROGERS STATE HISTORIC PARK
Welded Wire Retaining Wall, 24" lift (1856 Sq. Ft.), Rock-Faced
Los Angeles County, CA
State of Calif. Dept. of Parks and Recreation
 Contractor, J&A Development
 Designed By: Dept. of Parks and Recreation
 October 1994



HILFIKER RETAINING WALLS



P.O. Box 2012 - Eureka, CA - 95502-2012 - Ph. (707)443-5093 - Fax (707)443-2891 - Toll Free (800)762-8962



ZION-MT. CARMEL HWY UTAH PRA-ZION 10(2)
Welded Wire Retaining Wall, (852 Sq. Ft.), Masonry-Faced
U.S. Department of Interior
National Parks Service

Contractor, Ralph Wadsworth Construction
Designed By: U.S. Dept. of Transportation, Denver, Co.
Winter 1993



HILFIKER RETAINING WALLS



P.O. Box 2012 - Eureka, CA - 95502-2012 - Ph. (707)443-5093 - Fax (707)443-2891 - Toll Free (800)762-8962



BRYCE POINT PARKING AREA

Eureka Reinforced Soil Retaining Wall (4,256 Sq. Ft.)

Bryce Canyon National Park, Garfield County, UT

U.S. Department of Interior, Nat'l Park Service

Designed by: Nat'l Park Service and SHN Consulting Engineers

May 1995



HILFKER RETAINING WALLS



P.O. Box 2012 - Eureka, CA - 95502-2012 - Ph. (707)443-5093 - Fax (707)443-2891 - Toll Free (800)762-8962



BRYCE POINT PARKING AREA

Eureka Reinforced Soil Retaining Wall (4,256 Sq. Ft.)

Bryce Canyon National Park, Garfield County, UT

U.S. Department of Interior, Nat'l Park Service

Designed by: Nat'l Park Service and SHN Consulting Engineers
May 1995



HILFTIKER RETAINING WALLS



P.O. Box 2012 - Eureka, CA - 95502-2012 - Ph. (707)443-5093 - Fax (707)443-2891 - Toll Free (800)762-8962



KERR GULCH to EVERGREEN JUNIOR HIGH SCHOOL

Eureka Reinforced Soil with CIP Face (55,355 Sq. Ft.)

State Highway 74, Evergreen

Colorado Department of Transportation

Contractor: Tarco, Inc.

Engineer: Agra Earth Environmental

February 1995



HILFIKER RETAINING WALLS



P.O. Box 2012 - Eureka, CA - 95502-2012 - Ph. (707)443-5093 - Fax (707)443-2891 - Toll Free (800)762-8962



KERR GULCH WALL 'C'
Eureka Reinforced Soil with CIP Face (11,648 Sq. Ft.)
State Highway 74, Evergreen
Colorado Department of Transportation
 Contractor: Tarco, Inc.
 Engineer: Agra Earth Environmental
 Summer 1995



HILFIKER RETAINING WALLS



P.O. Box 2012 - Eureka, CA - 95502-2012 - Ph. (707)443-5093 - Fax (707)443-2891 - Toll Free (800)762-8962



KERR GULCH to EVERGREEN JUNIOR HIGH SCHOOL

Eureka Reinforced Soil with CIP Face (55,355 Sq. Ft.)

State Highway 74, Evergreen

Colorado Department of Transportation

Contractor: Tarco, Inc.

Engineer: Agra Earth Environmental

February 1995



HILFIKER RETAINING WALLS



P.O. Box 2012 - Eureka, CA - 95502-2012 - Ph. (707)443-5093 - Fax (707)443-2891 - Toll Free (800)762-8962



MIRACLE MILE TRAFFIC INTERCHANGE
Eureka Reinforced Soil with CIP Face (42,224 Sq. Ft.)
Interstate 10, Tucson, Arizona
Arizona Department of Transportation
Contractor: Hunter Contracting Company
Engineer: ADOT & MacIntosh Engineering & Development
May/June 1994



HILFIKER RETAINING WALLS



P.O. Box 2012 - Eureka, CA - 95502-2012 - Ph. (707)443-5093 - Fax (707)443-2891 - Toll Free (800)762-8962



MIRACLE MILE TRAFFIC INTERCHANGE
Eureka Reinforced Soil with CIP Face (42,224 Sq. Ft.)
Interstate 10, Tucson, Arizona
Arizona Department of Transportation
 Contractor: Hunter Contracting Company
 Engineer: ADOT & MacIntosh Engineering & Development
 May/June 1994



HILFIKER RETAINING WALLS



P.O. Box 2012 - Eureka, CA - 95502-2012 - Ph. (707)443-5093 - Fax (707)443-2891 - Toll Free (800)762-8962



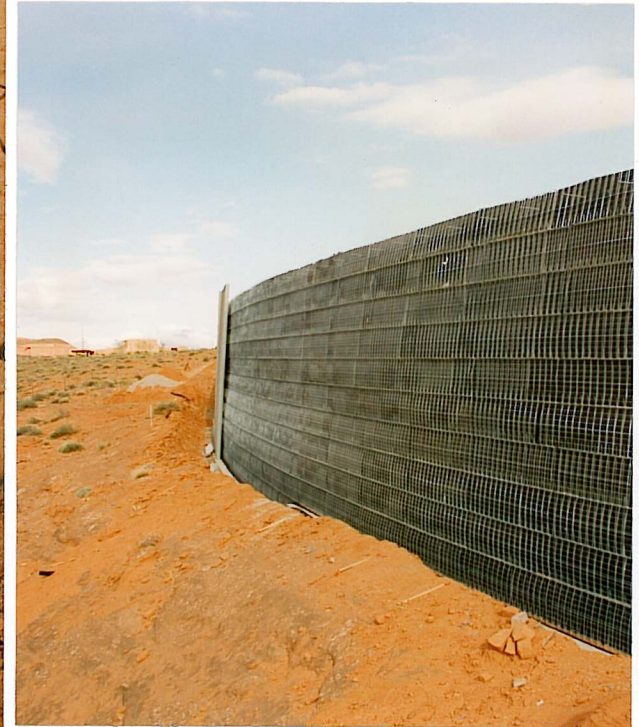
MIRACLE MILE TRAFFIC INTERCHANGE
Eureka Reinforced Soil Embankment with Cast-in-Place Face

Interstate 10, Tuscon, Arizona
 Owner: Arizona D.O.T. Contractor: Hunter Contracting Co.
 Designed by: ADOT and MacIntosh Engineering & Development
 May-June 1994 42,224 Sq. Ft.

P.O. Box 2012 Eureka, CA - 95502-2012
 Phone (707)443-5093 Fax (707)443-2891 Toll Free (800)762-8962
 email info@hilfiker.com web: <http://www.hilfiker.com>

HILFIKER RETAINING WALLS





Dec 2000 HIRW 940815-3



P.O. Box 2012 Eureka, CA - 95502-2012
Phone (707)443-5093 Fax (707)443-2891
Toll Free (800)762-8962 email info@hilfiker.com
web: <http://www.hilfiker.com>

HILFIKER RETAINING WALLS



BULLFROG BASIN ACCESS ROADS
Eureka Reinforced Soil Embankment
with Full-Height Precast Panels

Glen Canyon National Recreation Area, Utah
USDI, Nat'l Park Service, FHWA Funding

Contractor: Beco Construction

Designed by: MacIntosh Engineering and Development
February 1995 3,600 Sq. Ft



BULLFROG BASIN ACCESS ROADS
Eureka Reinforced Soil Embankment with Full-Height Precast Panels

Glen Canyon National Recreation Area, Utah

USDI, Nat'l Park Service, FHWA Funding

Contractor: Beco Construction Co, Inc. Designed by: MacIntosh Engineering & Development
 February 1995 3,600 Sq. Ft.

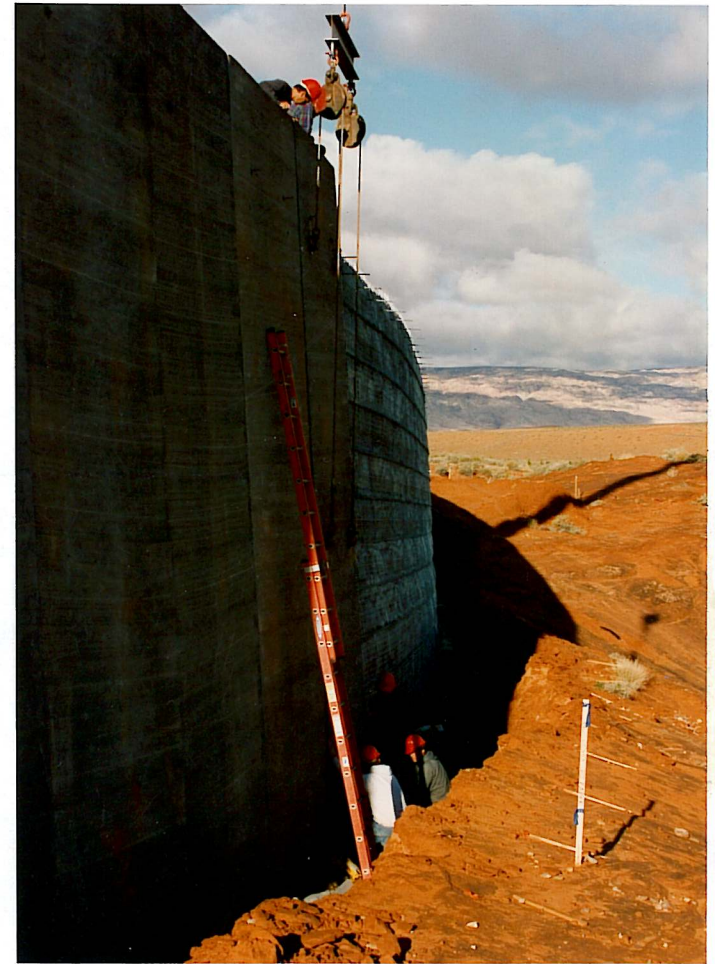
Dec. 2000 HIRW 940815-3



P.O. Box 2012 Eureka, CA - 95502-2012
 Phone (707)443-5093 Fax (707)443-2891 Toll Free (800)762-8962
 email info@hilfiker.com web: <http://www.hilfiker.com>

HILFIKER RETAINING WALLS





BULLFROG BASIN ACCESS ROADS
Eureka Reinforced Soil Embankment
 with Full-Height Precast Panels
GLEN CANYON NATIONAL RECREATION AREA, UTAH
 Contractor, Beco Construction
FHWA & National Park Service

Nov 1995



HILFIKER RETAINING WALLS

P.O. Box 2012 - Eureka, CA - 95502-2012 - Ph. (707)443-5093 - Fax (707)443-2891 - Toll Free (800)762-8962





BULLFROG BASIN ACCESS ROADS
Eureka Reinforced Soil Embankment
with Full-Height Precast Panels
GLEN CANYON NATIONAL RECREATION AREA, UTAH
Contractor, Beco Construction
FHWA & National Park Service

Nov 1995



HILFIKER RETAINING WALLS

P.O. Box 2012 - Eureka, CA - 95502-2012 - Ph. (707)443-5093 - Fax (707)443-2891 - Toll Free (800)762-8962





MORELAND STREET, Phoenix, Arizona
 Arizona Department of Transportation
 Contractor: JWW Contracting Co., Inc.
 February 1987



EHRENBERG-PHOENIX HWY. (I-10), Phoenix, Arizona
 Arizona Department of Transportation
 Contractor: JWW Contracting Co., Inc.
 Summer - Fall 1985



I-235 CENTRAL EXPRESSWAY, Oklahoma City
 Oklahoma Department of Transportation
 Contractor: Gilbert Central Corporation
 Summer 1986

Eureka Reinforced Soil

HILFIKER RETAINING WALLS

P.O. Box 2012 - Eureka, CA - 95502-2012 - Ph. (707)443-5093 - Fax (707)443-2891 - Toll Free (800)762-8962

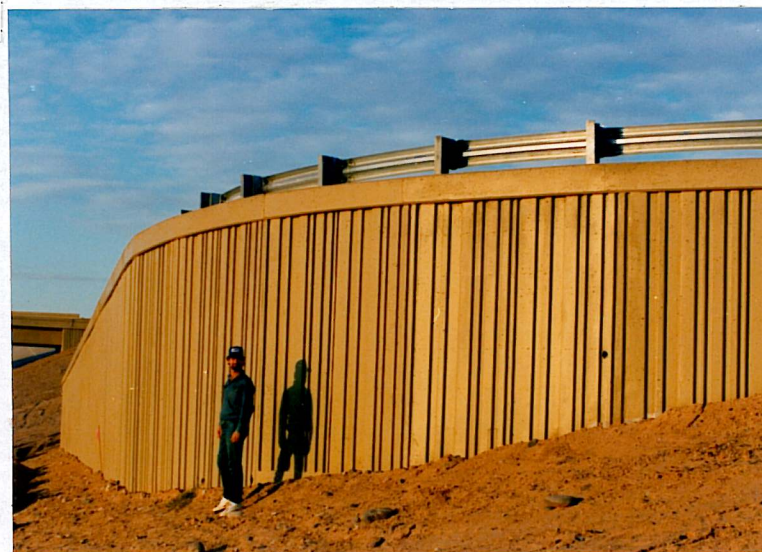




Eureka Reinforced Soil
(Cast-in-Place Face)
ARIZONA DEPARTMENT OF TRANSPORTATION



Eureka Reinforced Soil
(Cast-in-Place Face)
ARIZONA DEPARTMENT OF TRANSPORTATION
EHRENBERG ROAD
Phoenix, AZ
JWJ/Valley



Eureka Reinforced Soil
(Cast-in-Place Face)
ARIZONA DEPARTMENT OF TRANSPORTATION
MORELAND STREET
Phoenix, AZ
Contractor: JWJ/Baker



HILFIKER RETAINING WALLS **HW**

P. O. Drawer 2012 • 3900 Broadway • Eureka, CA • (707) 443-5093 • CA Toll Free (800) 762-7967 • U.S. Toll Free (800) 762-8962



MANTI TEMPLE (Construction Phase)

Eureka Reinforced Soil Retaining Wall

Manti, Sanpete County, Utah

Owner: Church of Jesus Christ of Latter-Day Saints

Contractor: Circle C Construction

Designed by: Geotechnical Design Services

July 1997

5,424 Sq. Ft Wire Wall Face



P.O. Box 2012 Eureka, CA - 95502-2012
 Phone (707)443-5093 Fax (707)443-2891
 Toll Free (800)762-8962 email info@hilfiker.com
 web: <http://www.hilfiker.com>

HILFIKER RETAINING WALLS

