



LEGEND:

-  10" x 6" x 1'-0" FILLER BLOCK ALIGNED AGAINST HEADER.
-  10" x 6" STRETCHERS
- LC1 = LOADING CASE I
- LC2 = LOADING CASE II
- y = 4 AND 6 FOR BATTERED FOR TYPES A, B, AND C

MAXIMUM WALL HEIGHTS						
BATTER	TYPE A		TYPE B		TYPE C	
	LC1	LC2	LC1	LC2	LC1	LC2
VERTICAL	24'-0"	11'-0"	27'-0"	20'-0"	31'-0"	27'-0"
1:6	31'-0"	13'-0"	36'-0"	23'-0"	36'-0"	33'-0"
1:4	33'-0"	15'-0"	36'-0"	25'-0"	36'-0"	36'-0"

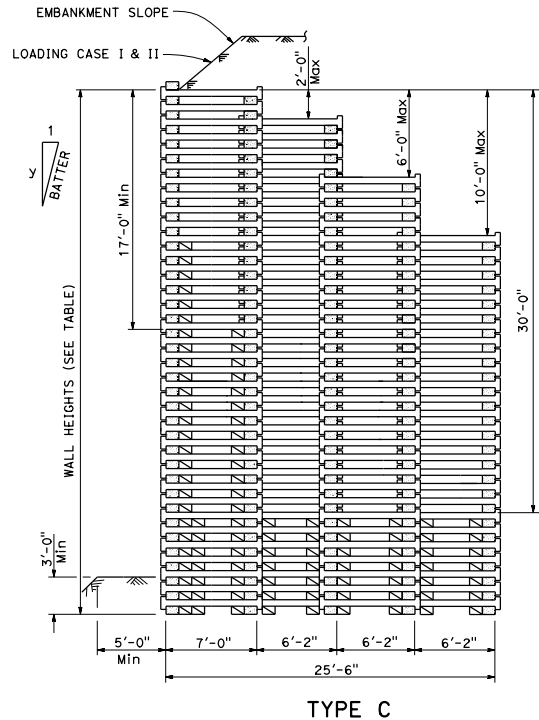
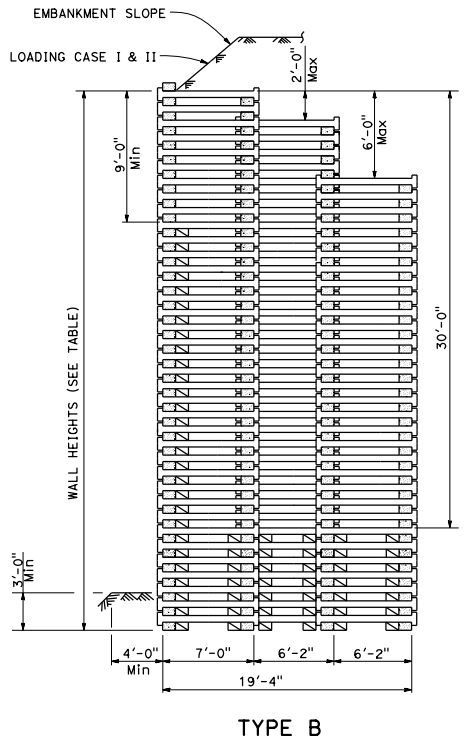
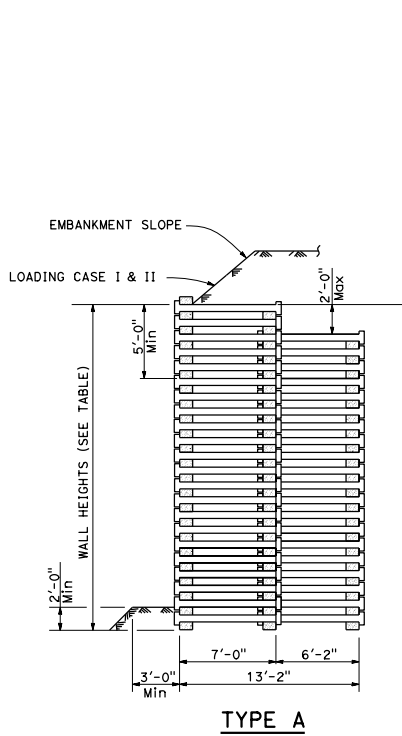
DIST	COUNTY	ROUTE	POST MILES TOTAL PROJECT	SHEET NO.	TOTAL SHEETS

Kathy Orinell
REGISTERED CIVIL ENGINEER

October 30, 2015
PLANS APPROVAL DATE

Kathryn Orinell
No. C55599
Exp. 12-31-16
CIVIL
STATE OF CALIFORNIA

THE STATE OF CALIFORNIA OR ITS OFFICERS OR AGENTS SHALL NOT BE RESPONSIBLE FOR THE ACCURACY OR COMPLETENESS OF SCANNED COPIES OF THIS PLAN SHEET.



STATE OF CALIFORNIA
DEPARTMENT OF TRANSPORTATION

**REINFORCED CONCRETE CRIB WALL
TYPES A, B AND C**

NO SCALE

C7A