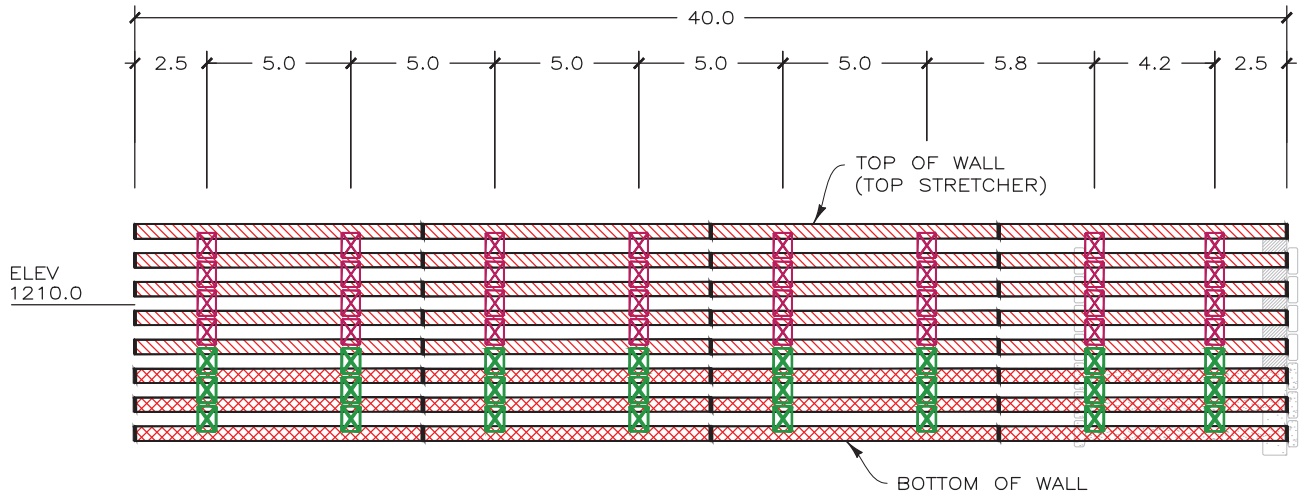
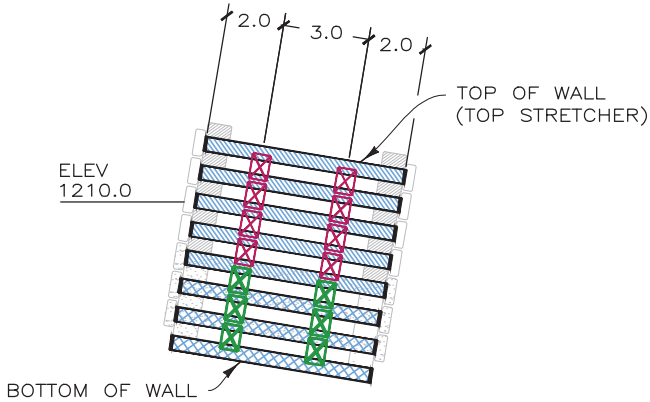


241002AC- DIABLO LAKE FUEL DOCK



DEVELOPED ELEVATION-FRONT VIEW
SCALE: 3" = 20'



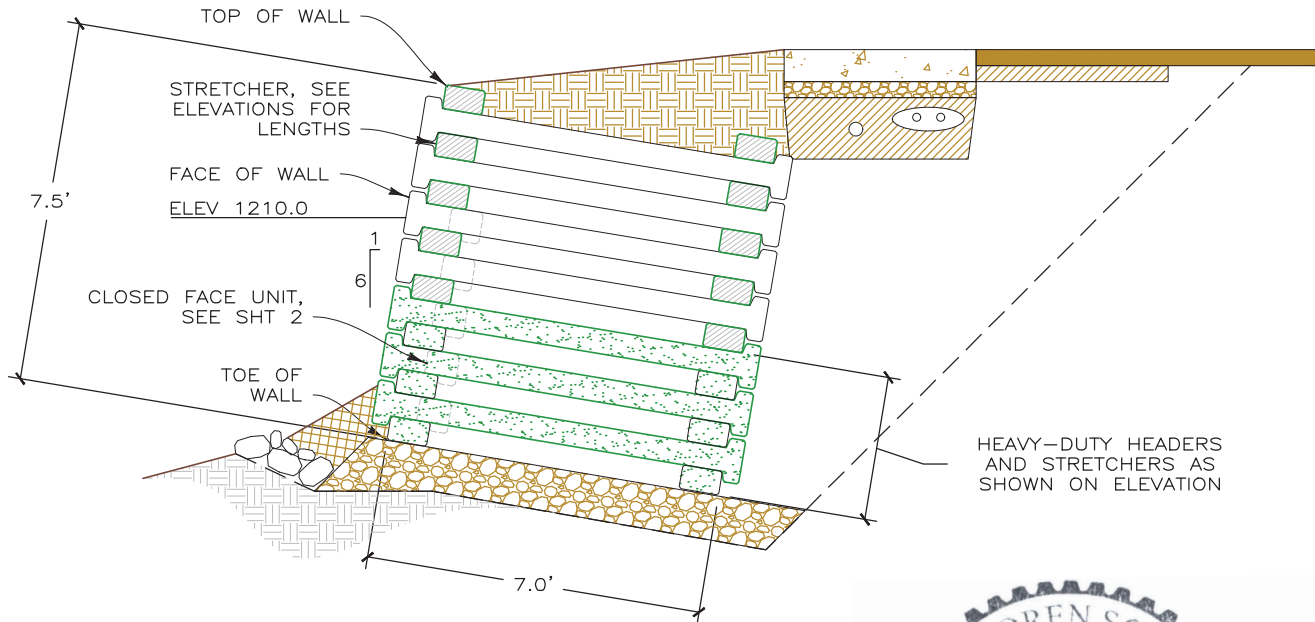
DEVELOPED ELEVATION-END VIEW
SCALE: 3" = 20'

SUPPLIED QUANTITIES

| | |
|----------------------------|----|
| STANDARD 7' HEADERS: | 40 |
| HEAVY-DUTY HEADERS: | 30 |
| TOTAL HEADERS: | 70 |
| 10' STANDARD STRETCHERS: | 40 |
| 10' HEAVY-DUTY STRETCHERS: | 24 |
| TOTAL 10' STRETCHERS: | 64 |
| 7' STANDARD STRETCHERS: | 5 |
| 7' HEAVY-DUTY STRETCHERS: | 3 |
| TOTAL 7' STRETCHERS: | 8 |

MATERIALS KEY

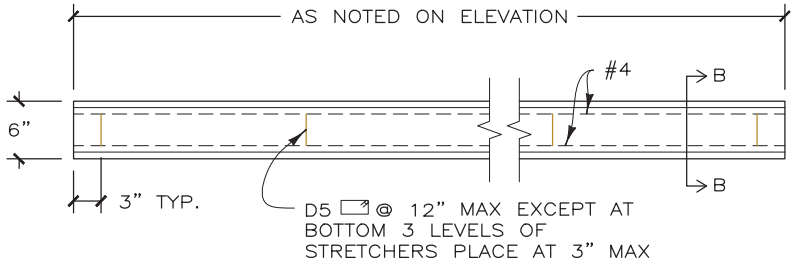
| | | |
|--------------------------|----|--|
| STANDARD HEADER | | |
| HEAVY-DUTY HEADER | HD | |
| 10' STRETCHER | | |
| HEAVY-DUTY 10' STRETCHER | HD | |
| 7' STRETCHER | | |
| HEAVY-DUTY 7' STRETCHER | HD | |



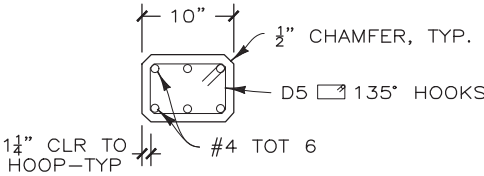
TYPICAL SECTION
SCALE: 1" = 4'



2/20/25

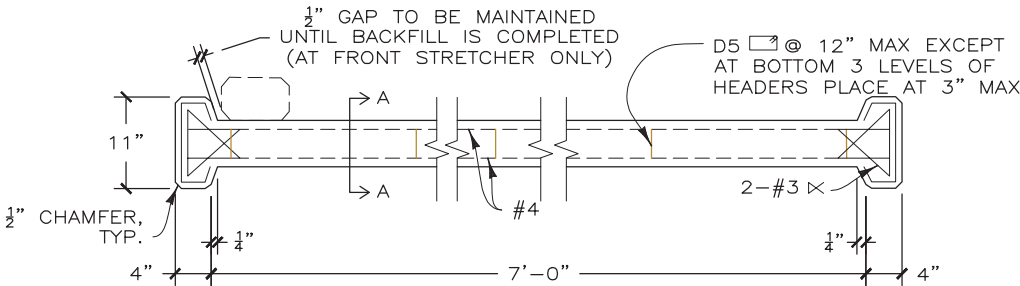


ELEVATION

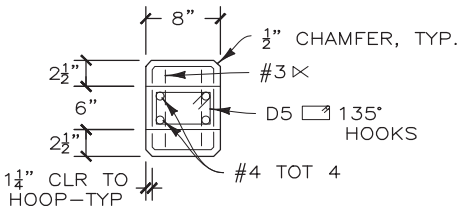


SECTION B-B

STRETCHER DETAIL
NOT TO SCALE



ELEVATION

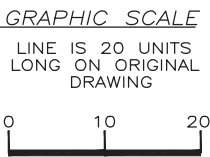


SECTION A-A

HEADER DETAIL
NOT TO SCALE

THIS DRAWING IS FURNISHED SOLELY FOR THE USE OF OR IN CONNECTION WITH THIS PROJECT AND THE PROPRIETARY INFORMATION SHOWN HEREON IS NOT TO BE TRANSMITTED TO ANY OTHER ORGANIZATION WITHOUT SPECIFIC AUTHORIZATION BY THE HILFIKER COMPANY. HILFIKER RETAINING WALLS ARE PROTECTED BY ONE OR MORE OF THE FOLLOWING PATENTS: 243,613; 243,697; 288,616; 4,117,686; 4,329,089; 4,324,508; 4,391,557; 4,505,621; 4,343,318; 4,661,023; 4,856,939; 4,929,125; 5,076,735; 5,647,695; 5,722,799; 5,733,072; 6,357,970B1; 6,874,975B2; 7,033,118B2; AND OTHERS. OTHER PATENTS PENDING (2008)

| REV.NO. | DATE | BY | DESCRIPTION |
|---------|-----------|-----|---------------------------|
| 1 | 19 NOV 24 | NMD | REVISED WALL LAYOUT |
| 2 | 25 NOV 24 | NMD | REVISED CLOSED FACE UNITS |
| | | | |
| | | | |
| | | | |



| | |
|-------------|-----|
| PROJ. MGR. | BH |
| DRAWN BY | NMD |
| REVIEWED BY | RB |

HILFIKER RETAINING WALLS



1902 HilfiKER Lane
Eureka, CA 95503-5711
TOLL-FREE 800.762.8962
PH 707.443.5093 FAX 707.443.2891
WEBSITE www.hilfiKER.com E-MAIL info@hilfiKER.com

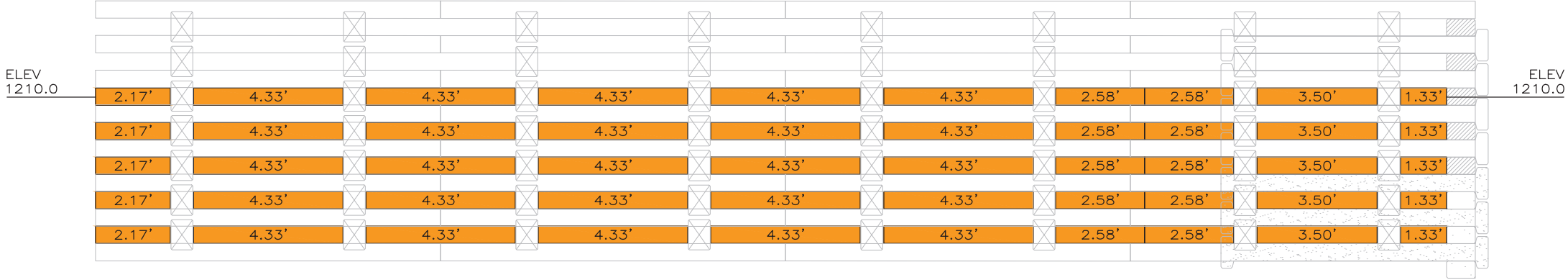


| | |
|---------------|-----------|
| DWG DATE | 2 OCT 24 |
| REVISION DATE | 25 NOV 24 |
| SCALE | NOTED |

| |
|---|
| FOR BIDDING PURPOSES ONLY |
| CRIBWALL |
| DIABLO LAKE FUEL DOCK |
| SEATTLE CITY LIGHT |
| DIABLO LAKE, WHATCOM COUNTY, WASHINGTON |
| WALL ELEVATIONS & SECTION |

| | |
|-------------|----------|
| PROJECT NO. | 241002AC |
| SHEET | 1 |
| OF | 2 |

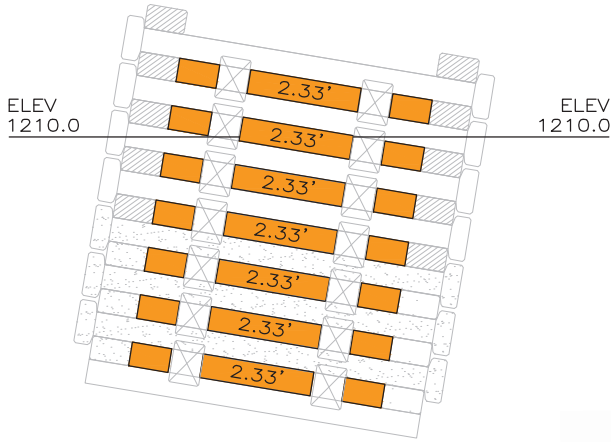
241002AC- DIABLO LAKE FUEL DOCK



FRONT VIEW- CLOSED FACE UNITS
SCALE: 1" = 5'

CLOSED FACE UNITS

| LENGTH | QTY |
|--------|-----|
| 4.33' | 25 |
| 3.50' | 5 |
| 2.58' | 10 |
| 2.33' | 7 |
| 2.17' | 5 |
| 1.33' | 5 |
| 0.83' | 14 |

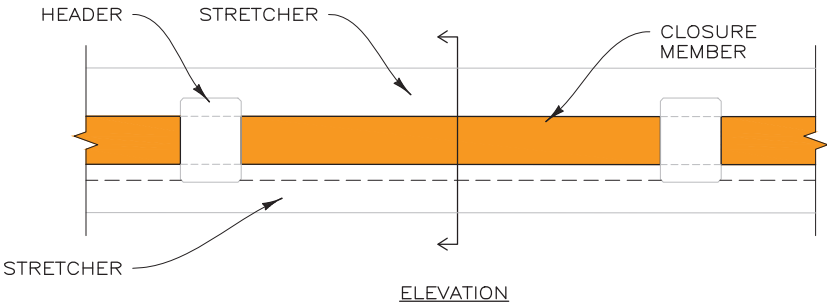


NOTE:
UNLESS OTHERWISE SHOWN, LENGTH
OF CLOSED FACE UNITS IS 0.83'

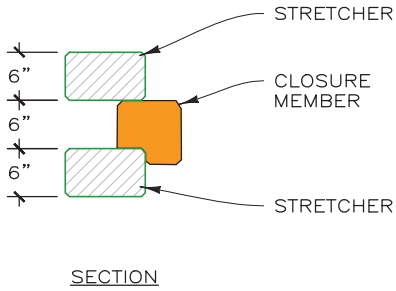
END VIEW- CLOSED FACE UNITS
SCALE: 1" = 5'



2/20/25

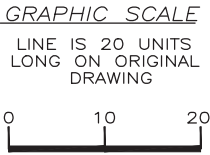


FRONT FACE CLOSED FACE DETAIL
NOT TO SCALE



THIS DRAWING IS FURNISHED SOLELY FOR THE USE OF OR IN CONNECTION WITH THIS PROJECT AND THE PROPRIETARY INFORMATION SHOWN HEREON IS NOT TO BE TRANSMITTED TO ANY OTHER ORGANIZATION WITHOUT SPECIFIC AUTHORIZATION BY THE HILFIKER COMPANY. HILFIKER RETAINING WALLS ARE PROTECTED BY ONE OR MORE OF THE FOLLOWING PATENTS: 243,613; 243,697; 288,616; 4,117,686; 4,329,089; 4,324,508; 4,391,557; 4,505,621; 4,343,318; 4,661,023; 4,856,939; 4,929,125; 5,076,735; 5,647,695; 5,722,799; 5,733,072; 6,357,970B1; 6,874,975B2; 7,033,118B2; AND OTHERS. OTHER PATENTS PENDING (2008)

| REV.NO. | DATE | BY | DESCRIPTION |
|---------|-----------|-----|---------------------------|
| 1 | 19 NOV 24 | NMD | REVISED WALL LAYOUT |
| 2 | 25 NOV 24 | NMD | REVISED CLOSED FACE UNITS |
| | | | |
| | | | |
| | | | |



PROJ. MGR.
BH
DRAWN BY
NMD
REVIEWED BY
RB

HILFIKER RETAINING WALLS

1902 Hilfiker Lane
Eureka, CA 95503-5711
TOLL-FREE 800.762.8962
PH 707.443.5093 FAX 707.443.2891
WEBSITE www.hilfiker.com E-MAIL info@hilfiker.com

DWG DATE
2 OCT 24
REVISION DATE
25 NOV 24
SCALE
NOTED

| FOR BIDDING PURPOSES ONLY |
|--|
| CRIBWALL DIABLO LAKE FUEL DOCK SEATTLE CITY LIGHT DIABLO LAKE, WHATCOM COUNTY, WASHINGTON |
| CLOSED FACE UNITS |

PROJECT NO.
241002AC
SHEET
2
OF 2