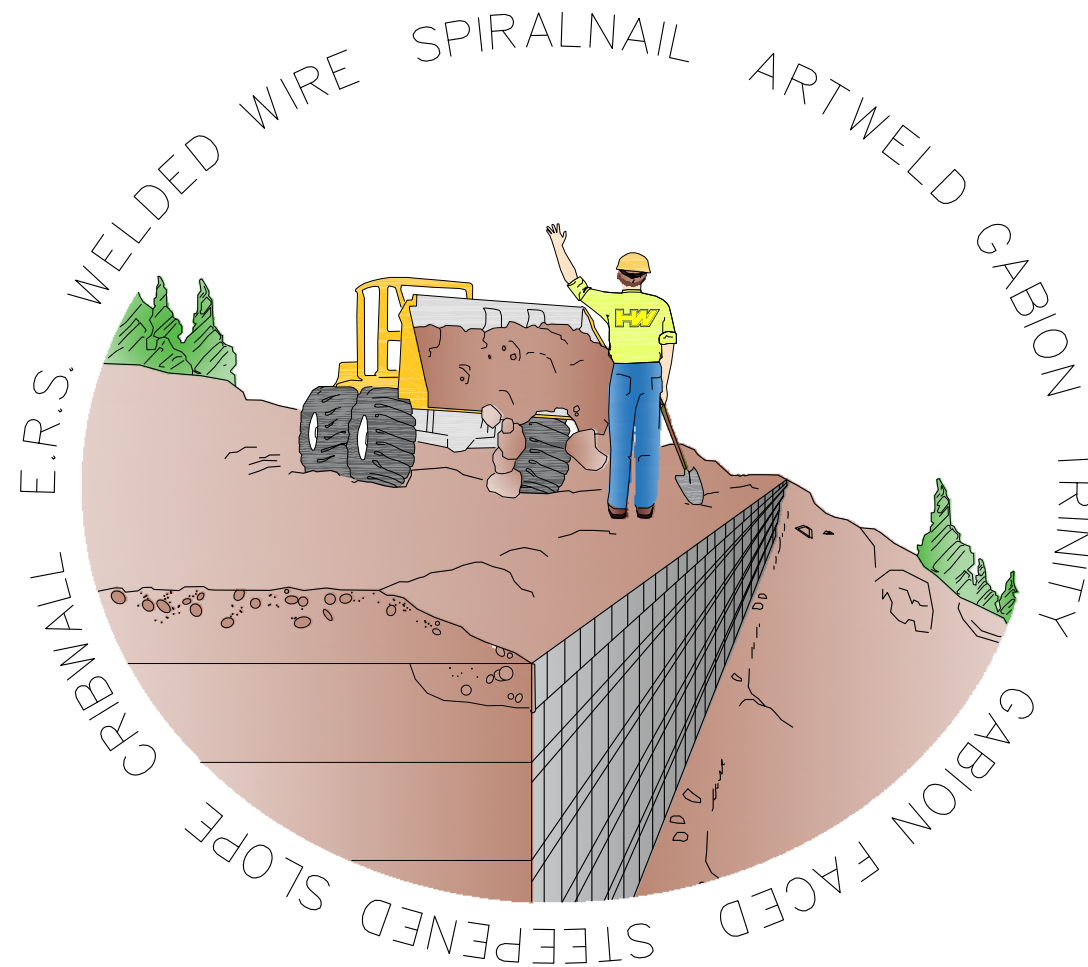


HILFIKER RETAINING WALLS

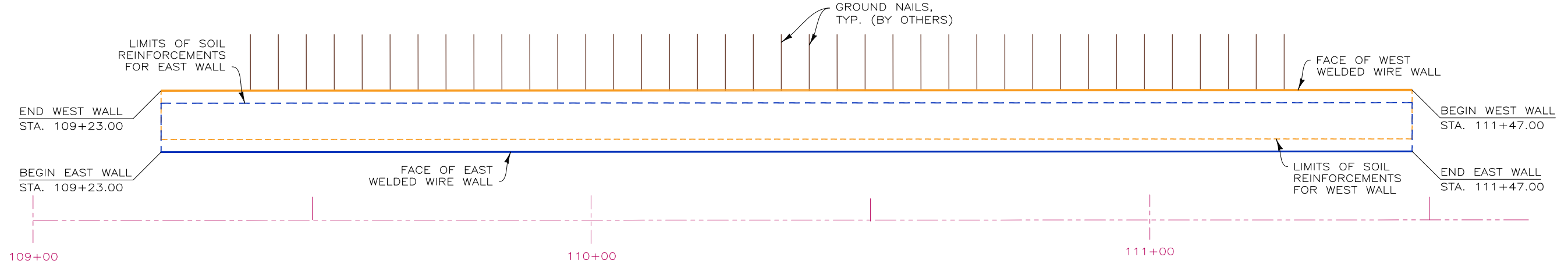


Shop Drawings



WELDED WIRE WALL

I-70 GLENWOOD CANYON WALL IMPROVEMENTS (HRW 201022DW)



PLAN VIEW
SCALE: 1" = 20'



PROJECT-SPECIFIC NOTES:

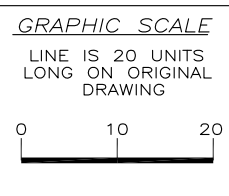
1. REFERENCE DRAWINGS: BASED ON CDOT PROJECT PLANS BY RJ ENGINEERING & CONSULTING, INC. SHEETS 7 AND 12 DATED OCTOBER 7, 2020, AND SHEET 9 DATED AUGUST 25, 2020.
2. BLACK AND WHITE REPRODUCTION OF THIS COLOR ORIGINAL MAY REDUCE ITS EFFECTIVENESS AND LEAD TO INCORRECT INTERPRETATION.
3. IT IS ASSUMED THAT ALL MATERIALS, BACKFILL AND CONSTRUCTION METHODS FOR HILFIKER M.S.E. WALLS AND/OR GABION WALLS WILL CONFORM TO HILFIKER'S SPECIFICATIONS AND/OR THOSE OF THE HILFIKER ENGINEERING CONSULTANT.
4. THIS IS NOT AN ENGINEERED SUBMITTAL. ALL INFORMATION HEREON IS DERIVED FROM THE REFERENCE DRAWINGS, AND IS SUBJECT TO GEOMETRIC AND GEOTECHNICAL CONFIRMATION. THE APPLICABLE HILFIKER CONSTRUCTION GUIDE AND SPECIFICATIONS ARE AN INTEGRAL PART OF THIS SUBMITTAL.
5. HILFIKER RETAINING WALLS SHALL NOT BE RESPONSIBLE FOR THE INTERNAL STABILITY OF THE RETAINING WALL, AND NOT FOR GLOBAL STABILITY OR FOUNDATION BEARING CAPACITY. THE OWNER/CONTRACTOR SHALL BE RESPONSIBLE FOR ALL JOB SITE DRAINAGE, SAFETY AND FALL PROTECTION PROVISIONS FOR WORKERS IN COMPLIANCE WITH OSHA AND ANY OTHER APPLICABLE REQUIREMENTS.
6. WALL DESIGN SHALL REQUIRE A NON-SATURATED BACKFILL. SURFACE AND SUBSURFACE DRAINAGE CONTROL MAY BE REQUIRED TO PREVENT SATURATION OF THE BACKFILL OR TO RELIEVE HYDROSTATIC PRESSURES. DRAINAGE CONTROL SHALL BE AS SPECIFIED IN THE OWNER'S PROJECT PLANS AND SPECIFICATIONS, OR AS DIRECTED BY THE OWNER'S ENGINEER.

SUPPLIED QUANTITIES	
WALL NO.	FACE AREA
EAST WALL	3,456 SQ. FT.
WEST WALL	3,456 SQ. FT.
TOTALS	6,912 SQ. FT.

201022DW-1-70 GLENWOOD CANYON WALL IMPROVEMENTS

THIS DRAWING IS FURNISHED SOLELY FOR THE USE OF OR IN CONNECTION WITH THIS PROJECT AND THE PROPRIETARY INFORMATION SHOWN HEREON IS NOT TO BE TRANSMITTED TO ANY OTHER ORGANIZATION WITHOUT SPECIFIC AUTHORIZATION BY THE HILFIKER COMPANY. HILFIKER RETAINING WALLS ARE PROTECTED BY ONE OR MORE OF THE FOLLOWING PATENTS: 243,613; 243,697; 288,616; 4,117,686; 4,329,089; 4,324,508; 4,391,557; 4,505,621; 4,343,318; 4,661,023; 4,856,939; 4,929,125; 5,076,735; 5,647,695; 5,722,799; 5,733,072; 6,357,970B1; 6,874,975B2; 7,033,118B2; AND OTHERS. OTHER PATENTS PENDING (2008)

REV.NO.	DATE	BY	DESCRIPTION



PROJ. MGR. LB
ENGINEER
CADD BY DH

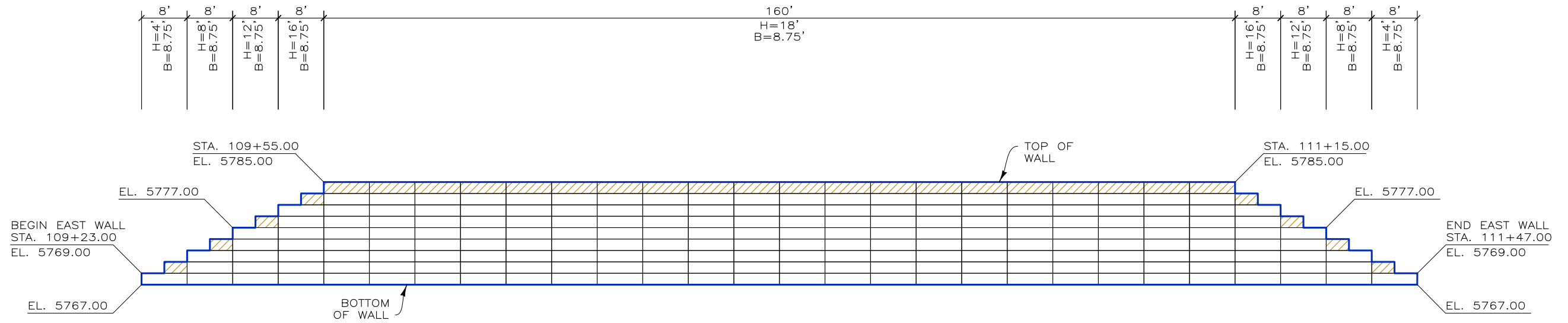
HILFIKER RETAINING WALLS

1902 Hilfiker Lane
Eureka, CA 95503-5711
TOLL-FREE 800.762.8962
PH 707.443.5093 FAX 707.443.2891
WEBSITE www.hilfiker.com E-MAIL info@hilfiker.com

DWG DATE 7 DEC 20
REVISION DATE
SCALE NOTED

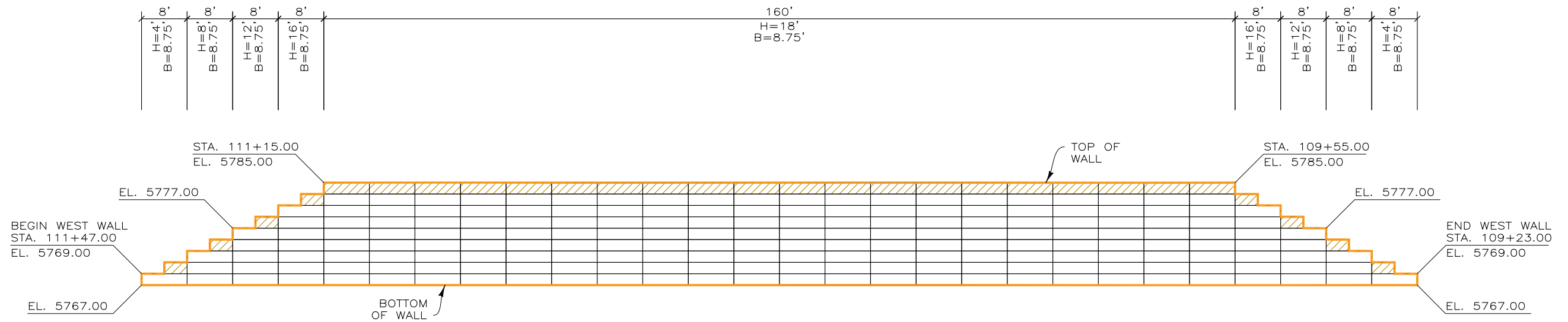
SHOP DRAWINGS
WELDED WIRE WALL
I-70 GLENWOOD CANYON WALL IMPROVEMENTS
GARFIELD COUNTY, COLORADO
PLAN VIEW

PROJECT NO. 201022DW
SHEET 1
OF 5



DEVELOPED ELEVATION - EAST WALL
SCALE: 1" = 20' (FRONT FACE)

- B 8"x10.5" W7.0xW7.0 PRONGLESS AND CAP MATS
- B 8"x10.5" W7.0xW7.0 STANDARD MATS

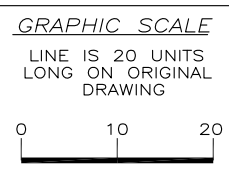


DEVELOPED ELEVATION - WEST WALL
SCALE: 1" = 20' (FRONT FACE)

201022DW-1-70 GLENWOOD CANYON WALL IMPROVEMENTS

THIS DRAWING IS FURNISHED SOLELY FOR THE USE OF OR IN CONNECTION WITH THIS PROJECT AND THE PROPRIETARY INFORMATION SHOWN HEREON IS NOT TO BE TRANSMITTED TO ANY OTHER ORGANIZATION WITHOUT SPECIFIC AUTHORIZATION BY THE HILFIKER COMPANY. HILFIKER RETAINING WALLS ARE PROTECTED BY ONE OR MORE OF THE FOLLOWING PATENTS: 243,613; 243,697; 288,616; 4,117,686; 4,329,089; 4,324,508; 4,391,557; 4,505,621; 4,343,318; 4,661,023; 4,856,939; 4,929,125; 5,076,735; 5,647,695; 5,722,799; 5,733,072; 6,357,970B1; 6,874,975B2; 7,033,118B2; AND OTHERS. OTHER PATENTS PENDING (2008)

REV.NO.	DATE	BY	DESCRIPTION



PROJ. MGR.
LB
ENGINEER
CADD BY
DH

HILFIKER RETAINING WALLS

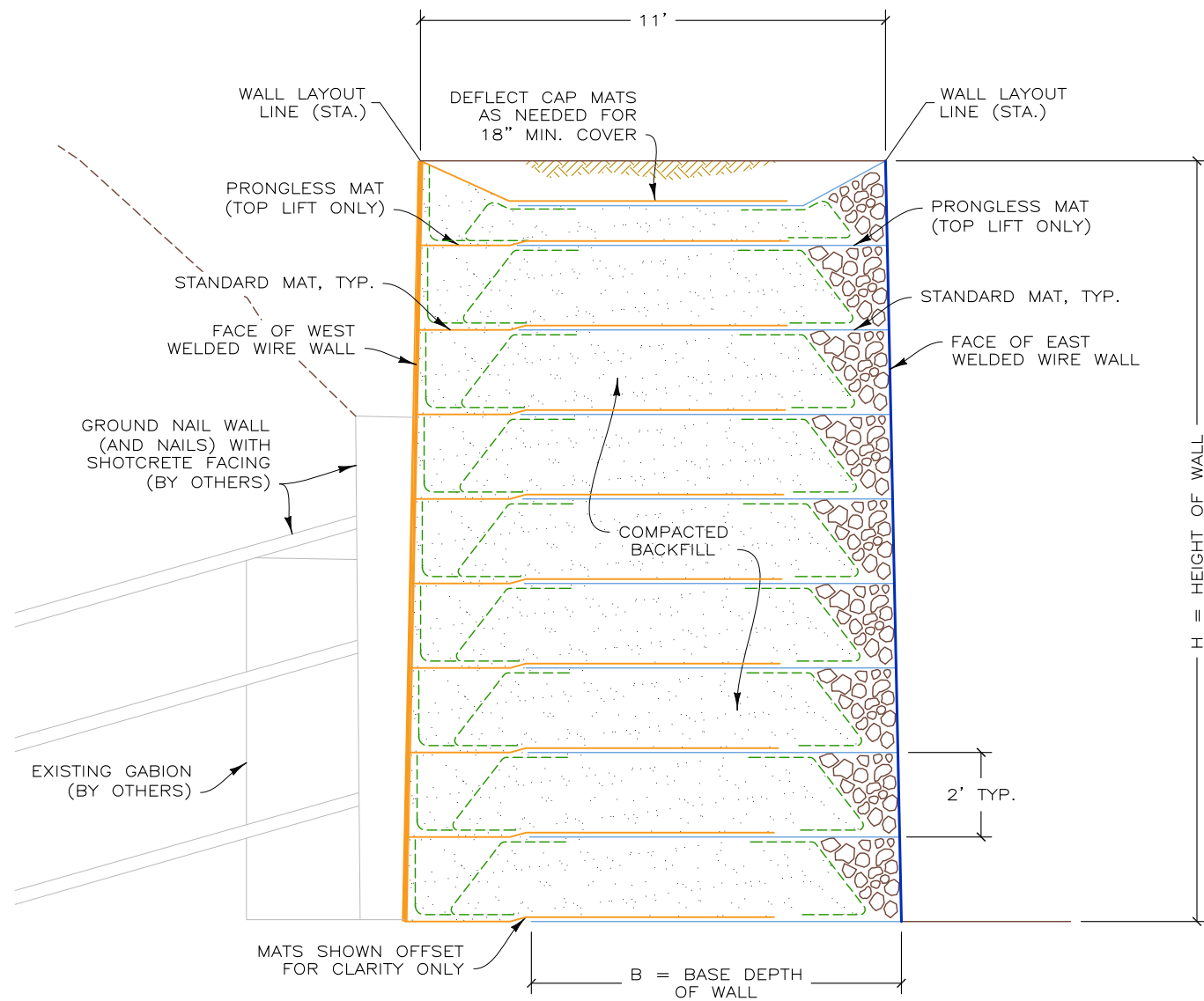
1902 Hilfiker Lane
Eureka, CA 95503-5711
TOLL-FREE 800.762.8962
PH 707.443.5093 FAX 707.443.2891
WEBSITE www.hilfiker.com E-MAIL info@hilfiker.com

SINCE 1902
QUALITY PRODUCTS

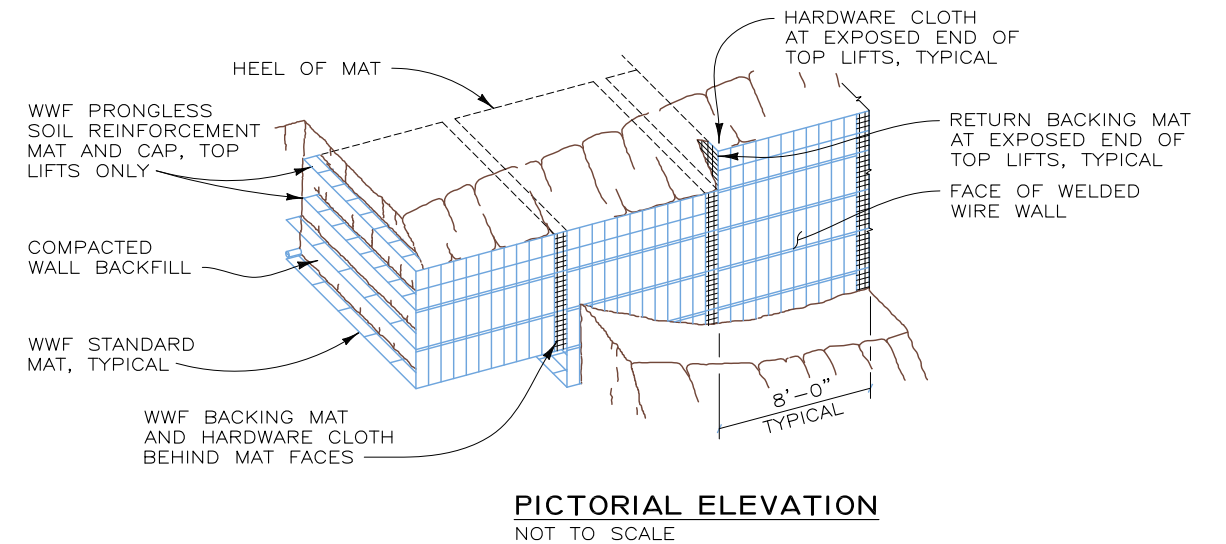
DWG DATE
7 DEC 20
REVISION DATE
SCALE
NOTED

SHOP DRAWINGS
WELDED WIRE WALL
I-70 GLENWOOD CANYON WALL IMPROVEMENTS
GARFIELD COUNTY, COLORADO
DEVELOPED ELEVATION

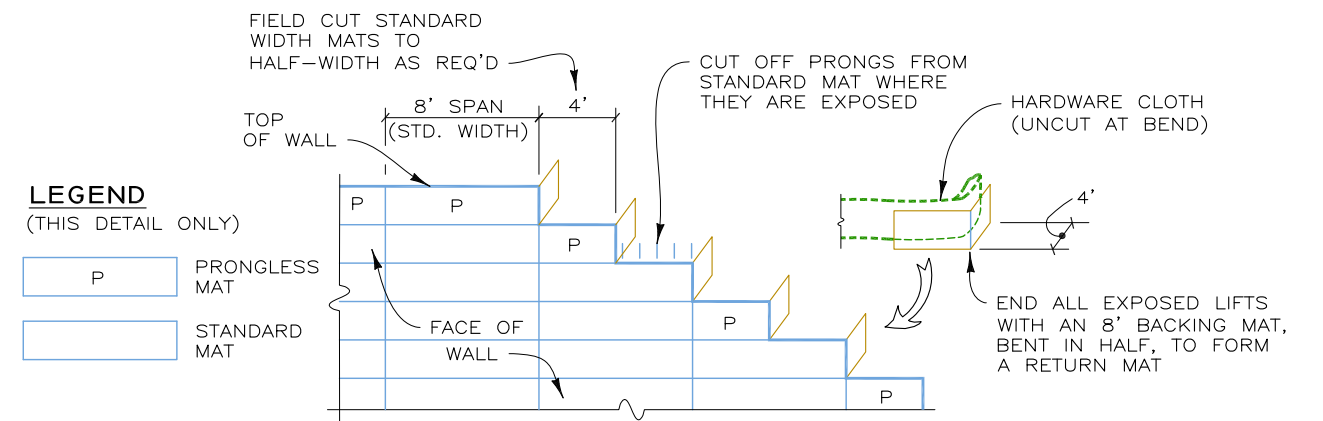
PROJECT NO.
201022DW
SHEET
2
OF 5



TYPICAL WELDED WIRE WALL SECTION
SCALE: 1" = 4'



PICTORIAL ELEVATION
NOT TO SCALE



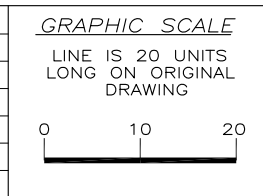
LEGEND
(THIS DETAIL ONLY)

- P PRONGLESS MAT
- STANDARD MAT

RETURN MATS AND TOP OF WALL DETAIL
NOT TO SCALE

THIS DRAWING IS FURNISHED SOLELY FOR THE USE OF OR IN CONNECTION WITH THIS PROJECT AND THE PROPRIETARY INFORMATION SHOWN HEREON IS NOT TO BE TRANSMITTED TO ANY OTHER ORGANIZATION WITHOUT SPECIFIC AUTHORIZATION BY THE HILFIKER COMPANY. HILFIKER RETAINING WALLS ARE PROTECTED BY ONE OR MORE OF THE FOLLOWING PATENTS: 243,613; 243,697; 288,616; 4,117,686; 4,329,089; 4,324,508; 4,391,557; 4,505,621; 4,343,318; 4,661,023; 4,856,939; 4,929,125; 5,076,735; 5,647,695; 5,722,799; 5,733,072; 6,357,970B1; 6,874,975B2; 7,033,118B2; AND OTHERS. OTHER PATENTS PENDING (2008)

REV.NO.	DATE	BY	DESCRIPTION



PROJ. MGR.
LB
ENGINEER
CADD BY
DH

HILFIKER RETAINING WALLS

1902 Hilfiker Lane
Eureka, CA 95503-5711
TOLL-FREE 800.762.8962
PH 707.443.5093 FAX 707.443.2891
WEBSITE www.hilfiker.com E-MAIL Info@hilfiker.com

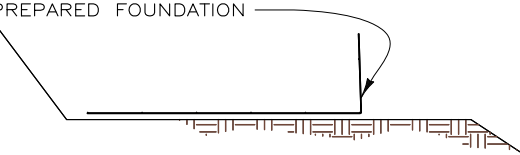
DWG DATE
7 DEC 20
REVISION DATE
SCALE
NOTED

SHOP DRAWINGS
WELDED WIRE WALL
I-70 GLENWOOD CANYON WALL IMPROVEMENTS
GARFIELD COUNTY, COLORADO
TYPICAL SECTION AND DETAILS

PROJECT NO.
201022DW
SHEET
3
OF 5

STEP 1

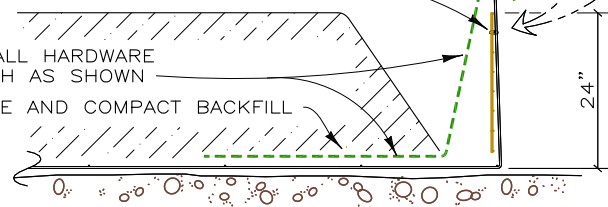
PLACE THE FIRST COURSE OF SOIL REINFORCEMENT MATS ON PREPARED FOUNDATION



STEP 2

PLACE THE BACKING MAT AGAINST THE INSIDE FACE OF THE SOIL REINFORCEMENT MAT. CLIP THE SECOND-TO-TOP TRANSVERSE WIRE ON THE BACKING MAT TO THE TOP TRANSVERSE WIRE ON THE SOIL REINFORCEMENT MAT.

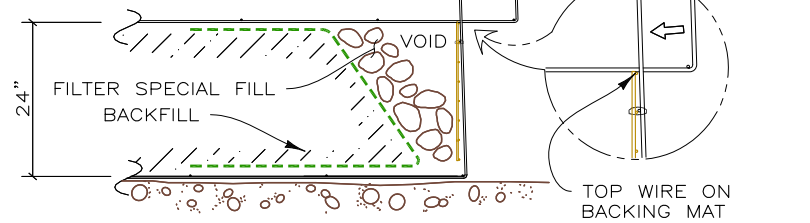
INSTALL HARDWARE CLOTH AS SHOWN
PLACE AND COMPACT BACKFILL



STEP 3

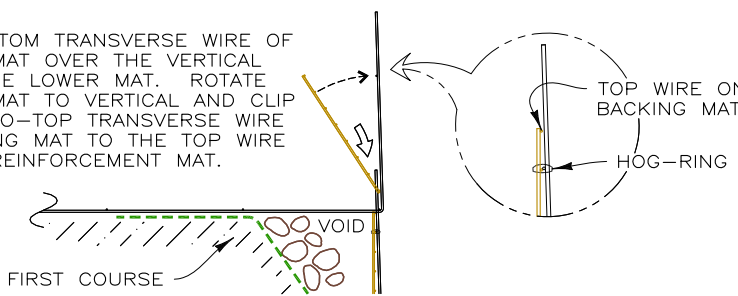
BRING THE HARDWARE CLOTH OVER THE FRONT AND TOP OF THE BACKFILL AS SHOWN. PLACE THE ROCK IN THE FACE OF THE WALL. LEAVE A VOID AS SHOWN.

PLACE THE SECOND COURSE OF SOIL REINFORCEMENT MATS WITH THE BASE LONGITUDINAL WIRES RESTING ON THE TOP TRANSVERSE WIRE OF THE BACKING MAT BELOW. SLIDE THE SOIL REINFORCEMENT MAT INTO ALIGNMENT.



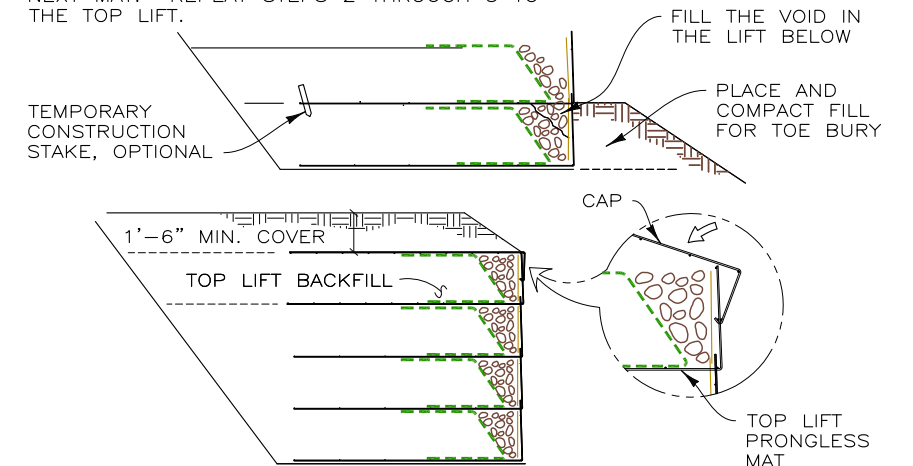
STEP 4

HOOK THE BOTTOM TRANSVERSE WIRE OF THE BACKING MAT OVER THE VERTICAL PRONGS ON THE LOWER MAT. ROTATE THE BACKING MAT TO VERTICAL AND CLIP THE SECOND-TO-TOP TRANSVERSE WIRE ON THE BACKING MAT TO THE TOP WIRE ON THE SOIL REINFORCEMENT MAT.



STEP 5

INSTALL THE HARDWARE CLOTH AS IN STEPS 2 AND 3. PLACE AND COMPACT THE BACKFILL AND ROCK TO THE BASE ELEVATION OF THE NEXT MAT. REPEAT STEPS 2 THROUGH 5 TO THE TOP LIFT.

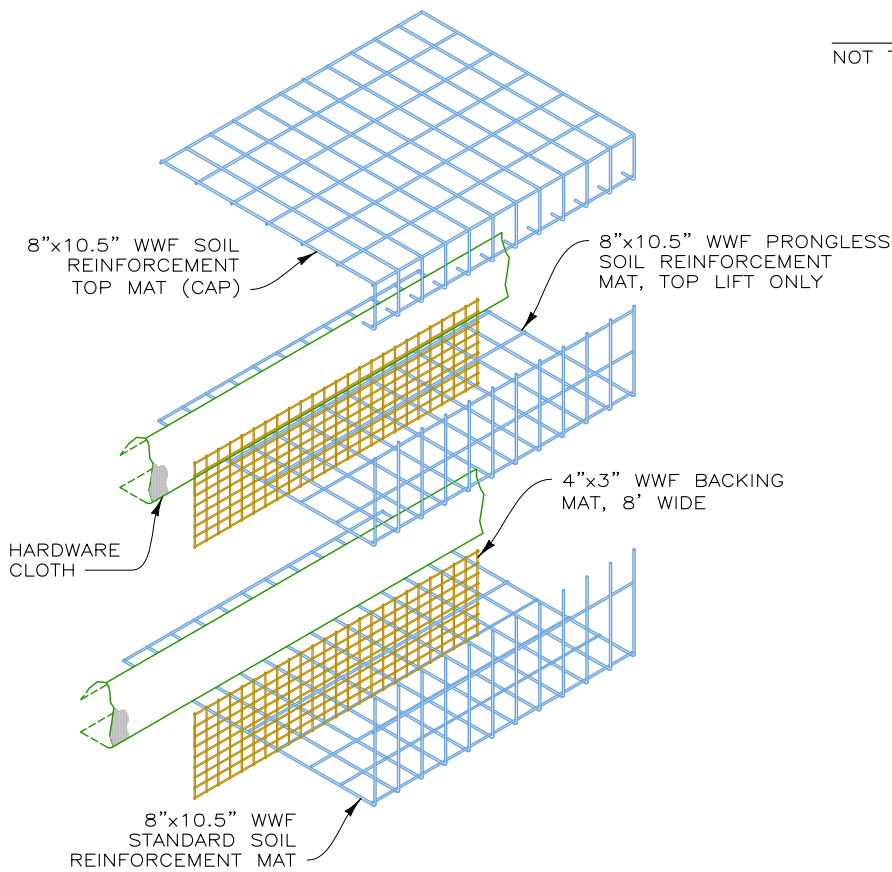


STEP 6: TOP LIFT

PLACE THE TOP LIFT PRONGLESS MAT, BACKING MAT AND HARDWARE CLOTH. PLACE AND COMPACT BACKFILL AND ROCK IN THE TOP LIFT. HOOK THE CAP OVER THE MIDDLE TRANSVERSE WIRE ON THE PRONGLESS MAT, AND ROTATE INTO PLACE. PLACE AND COMPACT COVER OVER TOP MAT TO 1'-6" MINIMUM DEPTH.

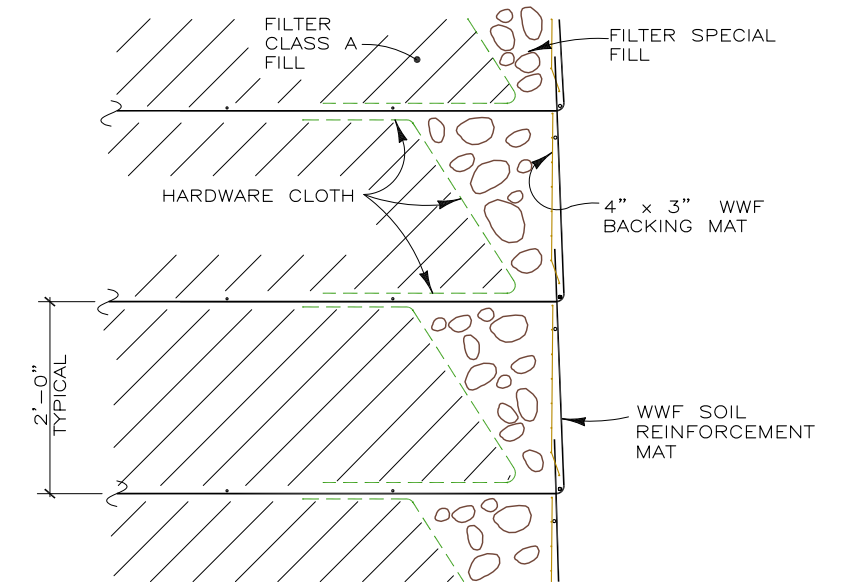
CONSTRUCTION SEQUENCE

NOT TO SCALE



WALL COMPONENTS

NOT TO SCALE



SECTION

WALL FACE DETAIL

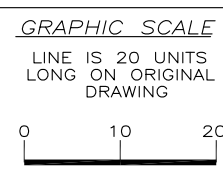
NOT TO SCALE

DETAILS ON THIS SHEET ARE FOR EAST WALL

201022DW-1-70 GLENWOOD CANYON WALL IMPROVEMENTS

THIS DRAWING IS FURNISHED SOLELY FOR THE USE OF OR IN CONNECTION WITH THIS PROJECT AND THE PROPRIETARY INFORMATION SHOWN HEREON IS NOT TO BE TRANSMITTED TO ANY OTHER ORGANIZATION WITHOUT SPECIFIC AUTHORIZATION BY THE HILFIKER COMPANY. HILFIKER RETAINING WALLS ARE PROTECTED BY ONE OR MORE OF THE FOLLOWING PATENTS: 2,433,613; 2,433,697; 2,886,616; 4,117,686; 4,329,089; 4,324,508; 4,391,557; 4,505,621; 4,343,318; 4,661,023; 4,856,939; 4,929,125; 5,076,735; 5,647,695; 5,722,799; 5,733,072; 6,357,970B1; 6,874,975B2; 7,033,118B2; AND OTHERS. OTHER PATENTS PENDING (2008)

REV.NO.	DATE	BY	DESCRIPTION



PROJ. MGR.
LB
ENGINEER
CADD BY
DH

HILFIKER RETAINING WALLS

1902 Hilfiker Lane
Eureka, CA 95503-5711
TOLL-FREE 800.762.8962
PH 707.443.5093 FAX 707.443.2891
WEBSITE www.hilfiker.com E-MAIL Info@hilfiker.com

DWG DATE
7 DEC 20
REVISION DATE
SCALE
NOTED

SHOP DRAWINGS
WELDED WIRE WALL
1-70 GLENWOOD CANYON WALL IMPROVEMENTS
GARFIELD COUNTY, COLORADO
CONSTRUCTION SEQUENCE AND DETAILS

PROJECT NO.
201022DW
SHEET
4
OF 5

STEP 1

PLACE THE FIRST COURSE OF SOIL REINFORCEMENT MATS ON PREPARED FOUNDATION

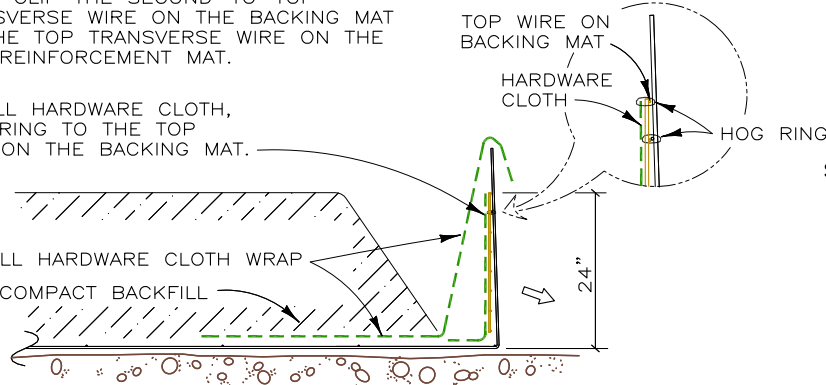


STEP 2

PLACE THE BACKING MAT AGAINST THE INSIDE FACE OF THE SOIL REINFORCEMENT MAT. CLIP THE SECOND-TO-TOP TRANSVERSE WIRE ON THE BACKING MAT TO THE TOP TRANSVERSE WIRE ON THE SOIL REINFORCEMENT MAT.

INSTALL HARDWARE CLOTH, HOG-RING TO THE TOP WIRE ON THE BACKING MAT.

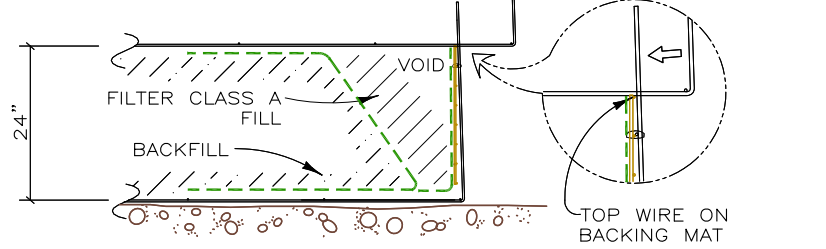
INSTALL HARDWARE CLOTH WRAP
PLACE AND COMPACT BACKFILL



STEP 3

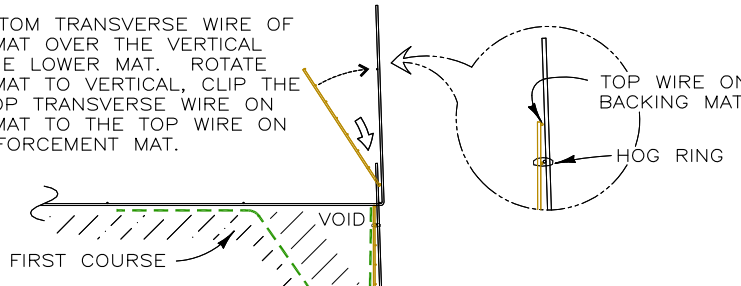
BRING THE HARDWARE CLOTH OVER THE FRONT AND TOP OF THE BACKFILL AS SHOWN. PLACE THE GRANULAR FILL IN THE FACE OF THE WALL. LEAVE A VOID AS SHOWN.

PLACE THE SECOND COURSE OF SOIL REINFORCEMENT MATS WITH THE BASE LONGITUDINAL WIRES RESTING ON THE TOP TRANSVERSE WIRE OF THE BACKING MAT BELOW. SLIDE THE SOIL REINFORCEMENT MAT INTO ALIGNMENT.



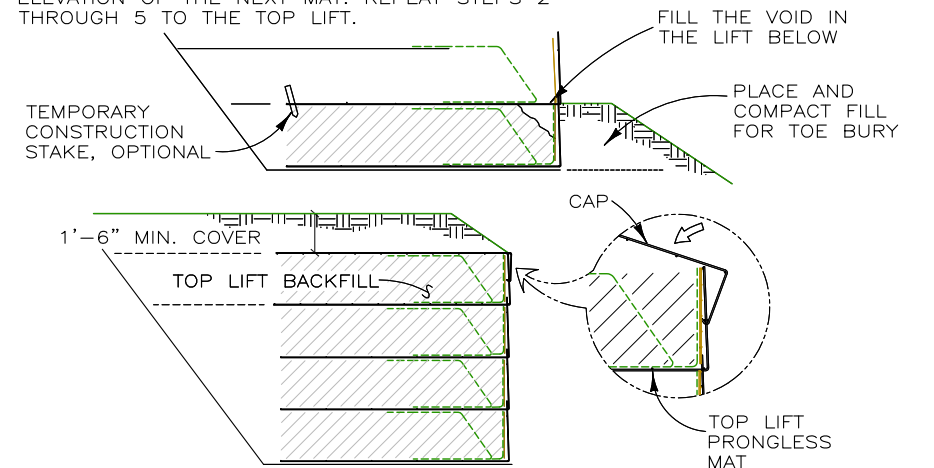
STEP 4

HOOK THE BOTTOM TRANSVERSE WIRE OF THE BACKING MAT OVER THE VERTICAL PRONGS ON THE LOWER MAT. ROTATE THE BACKING MAT TO VERTICAL, CLIP THE SECOND-TO-TOP TRANSVERSE WIRE ON THE BACKING MAT TO THE TOP WIRE ON THE SOIL REINFORCEMENT MAT.



STEP 5

FILL THE VOID IN THE LIFT BELOW. INSTALL THE HARDWARE CLOTH AS IN STEPS 2 AND 3. PLACE AND COMPACT THE BACKFILL TO THE BASE ELEVATION OF THE NEXT MAT. REPEAT STEPS 2 THROUGH 5 TO THE TOP LIFT.

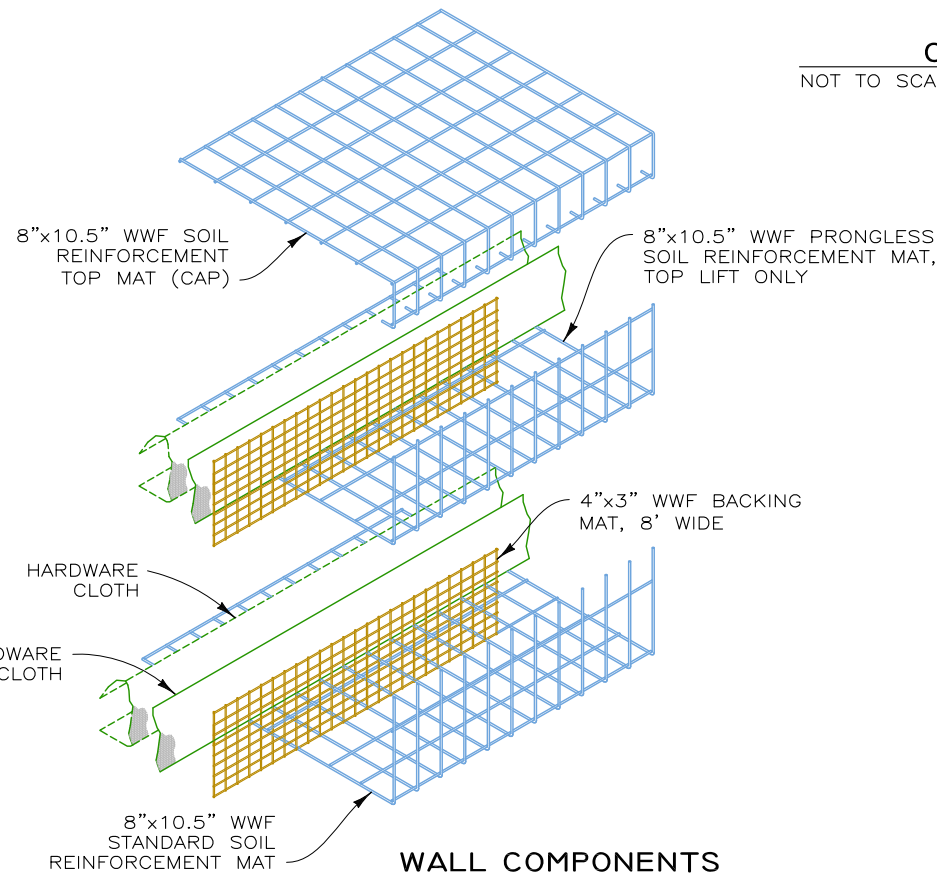


STEP 6: TOP LIFT

PLACE THE TOP LIFT PRONGLESS MAT, BACKING MAT, AND HARDWARE CLOTH. PLACE AND COMPACT BACKFILL AND ROCK IN THE TOP LIFT. HOOK THE CAP OVER THE MIDDLE TRANSVERSE WIRE ON THE PRONGLESS MAT, AND ROTATE INTO PLACE. PLACE AND COMPACT COVER OVER TOP MAT TO 1'-6" MINIMUM DEPTH.

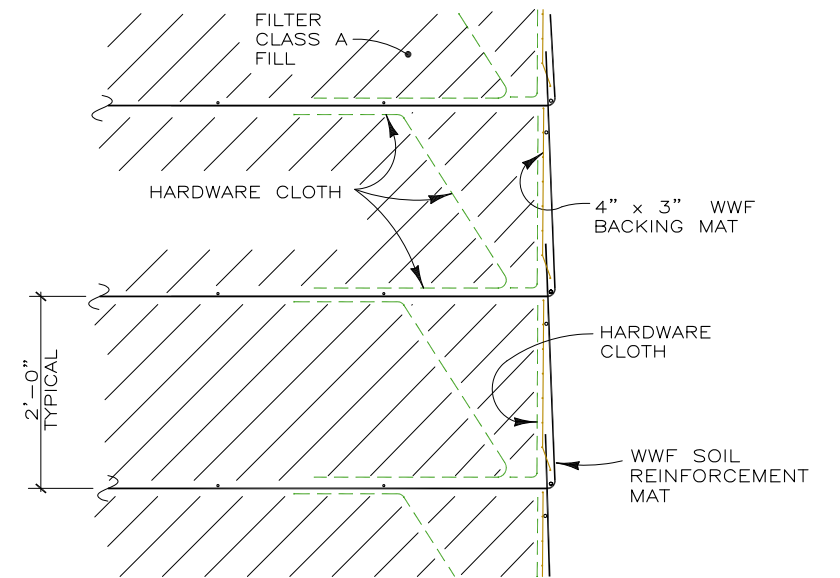
CONSTRUCTION SEQUENCE

NOT TO SCALE



WALL COMPONENTS

NOT TO SCALE



SECTION

WALL FACE DETAIL

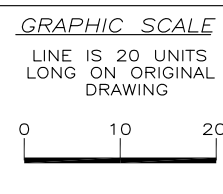
NOT TO SCALE

DETAILS ON THIS SHEET ARE FOR WEST WALL

201022DW-1-70 GLENWOOD CANYON WALL IMPROVEMENTS

THIS DRAWING IS FURNISHED SOLELY FOR THE USE OF OR IN CONNECTION WITH THIS PROJECT AND THE PROPRIETARY INFORMATION SHOWN HEREON IS NOT TO BE TRANSMITTED TO ANY OTHER ORGANIZATION WITHOUT SPECIFIC AUTHORIZATION BY THE HILFIKER COMPANY. HILFIKER RETAINING WALLS ARE PROTECTED BY ONE OR MORE OF THE FOLLOWING PATENTS: 243,613; 243,697; 288,616; 4,117,686; 4,329,089; 4,324,508; 4,391,557; 4,505,621; 4,343,318; 4,661,023; 4,856,939; 4,929,125; 5,076,735; 5,647,695; 5,722,799; 5,733,072; 6,357,970B1; 6,874,975B2; 7,033,118B2; AND OTHERS. OTHER PATENTS PENDING (2008)

REV. NO.	DATE	BY	DESCRIPTION



PROJ. MGR.
LB
ENGINEER
CADD BY
DH

HILFIKER RETAINING WALLS

1902 Hilfiker Lane
Eureka, CA 95503-5711
TOLL-FREE 800.762.8962
PH 707.443.5093 FAX 707.443.2891
WEBSITE www.hilfiker.com E-MAIL info@hilfiker.com

DWG DATE
7 DEC 20
REVISION DATE
SCALE
NOTED

SHOP DRAWINGS
WELDED WIRE WALL
1-70 GLENWOOD CANYON WALL IMPROVEMENTS
GARFIELD COUNTY, COLORADO
CONSTRUCTION SEQUENCE AND DETAILS

PROJECT NO.
201022DW
SHEET
5
OF 5