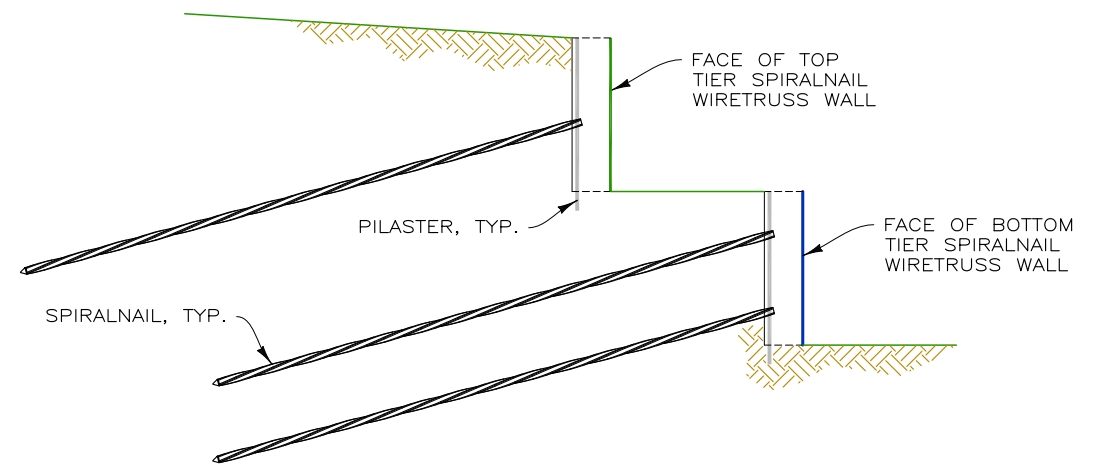
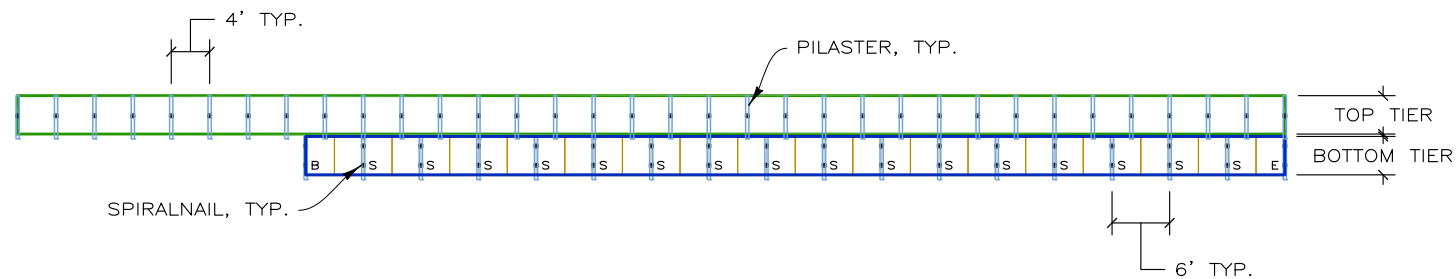


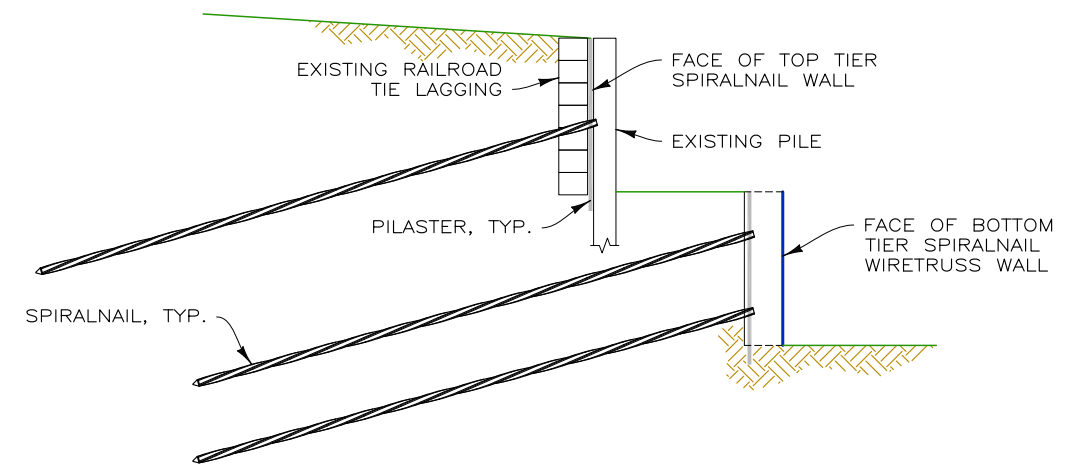
DEVELOPED ELEVATION - OPTION 1
SCALE: 1" = 20'



TYPICAL SPIRALNAIL WIRETRUSS SECTION - OPTION 1
SCALE: 1" = 5'



DEVELOPED ELEVATION - OPTION 2
SCALE: 1" = 20'



TYPICAL SPIRALNAIL WIRETRUSS SECTION - OPTION 2
SCALE: 1" = 5'

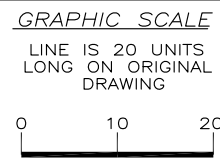
ESTIMATED QUANTITIES:

- OPTION 1
TOTAL SPIRALNAILS: 59
- OPTION 2
TOTAL SPIRALNAILS: 70

200123FN - BEACHWOOD REPAIRS

THIS DRAWING IS FURNISHED SOLELY FOR THE USE OF OR IN CONNECTION WITH THIS PROJECT AND THE PROPRIETARY INFORMATION SHOWN HEREON IS NOT TO BE TRANSMITTED TO ANY OTHER ORGANIZATION WITHOUT SPECIFIC AUTHORIZATION BY THE HILFIKER COMPANY. HILFIKER RETAINING WALLS ARE PROTECTED BY ONE OR MORE OF THE FOLLOWING PATENTS: 243,613; 243,697; 288,616; 4,117,686; 4,329,089; 4,324,508; 4,391,557; 4,505,621; 4,343,318; 4,661,023; 4,856,939; 4,929,125; 5,076,735; 5,647,695; 5,722,799; 5,733,072; 6,357,970B1; 6,874,975B2; 7,033,118B2; AND OTHERS. OTHER PATENTS PENDING (2008)

| REV.NO. | DATE | BY | DESCRIPTION |
|---------|------|----|-------------|
| | | | |
| | | | |
| | | | |



PROJ. MGR.
BH
ENGINEER
CADD BY
DH

HILFIKER RETAINING WALLS

1902 Hilfiker Lane
Eureka, CA 95503-5711
TOLL-FREE 800.762.8962
PH 707.443.5093 FAX 707.443.2691
WEB SITE www.hilfiker.com E-MAIL info@hilfiker.com

DWG DATE
31 JAN 20
REVISION DATE
SCALE
NOTED

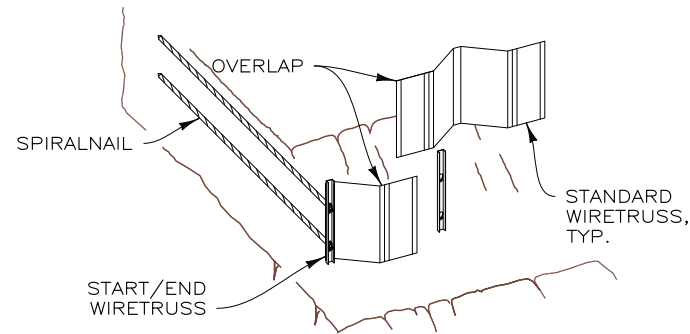
FOR BIDDING PURPOSES ONLY
SPIRALNAIL TRUSS WALL
BEACHWOOD REPAIRS
BOB LEE
EUREKA, CALIFORNIA
DEVELOPED ELEVATION & TYP SECTIONS

PROJECT NO.
200123FN
SHEET
1
OF 4

STEP 1

IF PREPARED SOIL WILL SUPPORT PILASTERS, POSITION PILASTERS EVERY SIX FEET ALONG WALL LAYOUT LINE AND SET BOTTOM OF PILASTER INTO GROUND PER PROJECT PLANS.

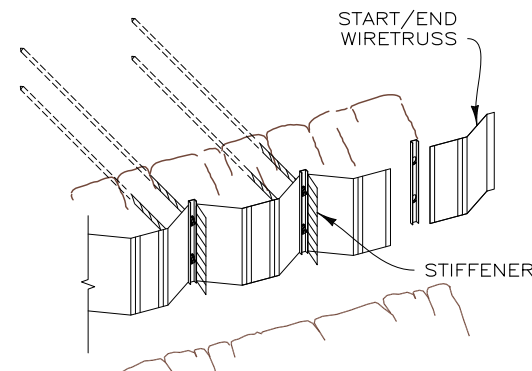
IF PILASTERS CANNOT BE PRE-POSITIONED, PLACE START/END TRUSS ON PREPARED SLOPE FIRST THEN POSITION THE PILASTER CHANNEL AGAINST THE EDGE OF THE TRUSS AND SET BOTTOM OF PILASTER INTO GROUND PER PROJECT PLANS. DRIVE SPIRALNAILS THROUGH THE PILASTER INTO THE SOIL. PLACE CAM LOCK ON EACH SPIRALNAIL AND TIGHTEN TO TORQUE SPECIFICATIONS.



STEP 2

IF PILASTERS HAVE NOT BEEN PRE-POSITIONED, POSITION NEXT PILASTER AND SET INTO GROUND. PLACE THE STANDARD TRUSS BEHIND PILASTER AND OVERLAP PANEL AGAINST THE START/END TRUSS USING ZIP TIES OR TIE WIRE TO SECURE TRUSS IN PLACE. DRIVE IN SPIRALNAILS AND LOCK WITH CAM LOCKS.

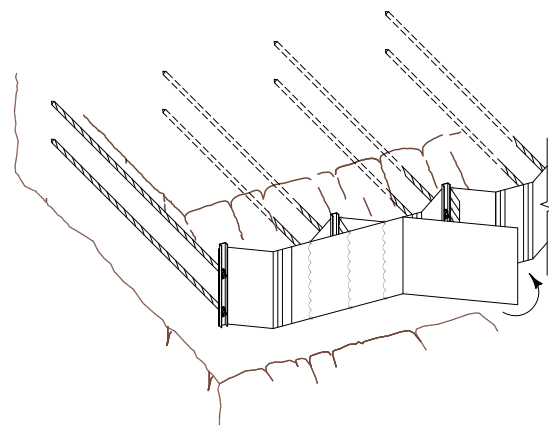
CONTINUE ADDING STANDARD TRUSSES ALONG WALL ENDING AT FINAL PILASTER WITH A START/END TRUSS



STEP 3

POSITION START/END TRUSS, ADD PILASTER IF NEEDED, DRIVE IN SPIRALNAILS AND LOCK IN PLACE WITH CAM LOCKS.

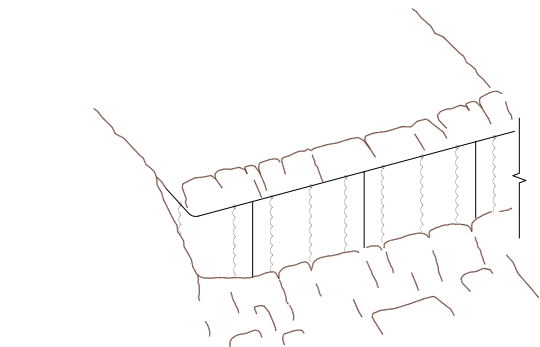
SPIRAL STIFFENERS ONTO STANDARD TRUSSES AT WIRE ON RIGHT SIDE OF PILASTER.



STEP 4

TO BEGIN FACING THE WALL, CENTER EDGES OF A FACING PANEL ON TRUSS OVERLAP. SPIRAL THE ENDS OF OVERLAP AND THE STIFFENER TO FACE PANEL.

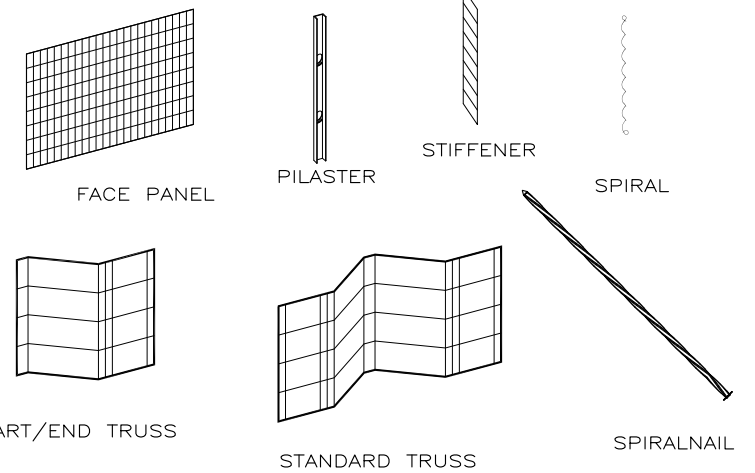
PLACE EDGE OF NEXT FACE PANEL AGAINST PREVIOUS PANEL AND SPIRAL TO WIRETRUSS



STEP 5

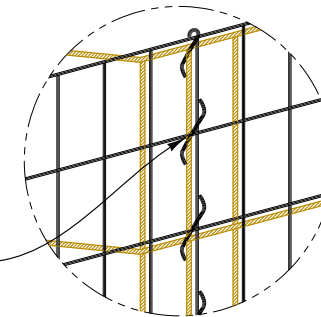
FOR CLOSURE FACING AT EACH END OF WALL, BEND FACING PANEL PER PROJECT PLANS AND INSERT END OF PANEL AGAINST PREVIOUS FACING. FIELD FIT OPPOSITE END AND TRIM AS NEEDED AGAINST SLOPE. SPIRAL FACING TO START/END TRUSS PANEL AND TO STIFFENER. SEE END OF WALL TREATMENT DETAIL, THIS SHEET.

FILL AREA BEHIND WALL WITH BACKFILL PER PROJECT PLANS. COMPACT SOIL AGAINST FACE OF WALL FOR TOE BURY.

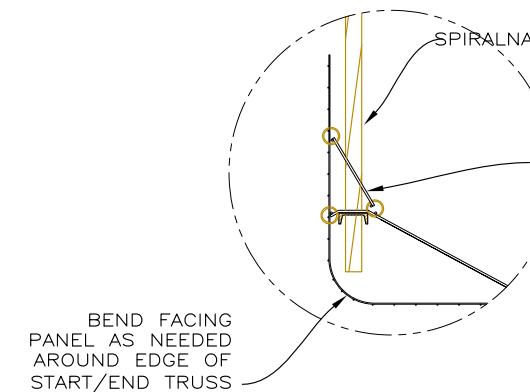


WALL COMPONENTS
NOT TO SCALE

SPIRAL BINDER IS TO BE PLACED SO THAT IT ENCIRCLES BOTH THE HORIZONTAL AND VERTICAL WIRES AND PASSES IN FRONT OF THE HORIZONTAL WIRE IN THE FACE OF WALL AT EACH INTERSECTION.



SPIRAL BINDER ATTACHMENT
NOT TO SCALE



FOR START/END TRUSS ONLY, CONNECT STIFFENER TO THE BACK OF THE TRUSS NEXT TO THE PILASTER WITH A SPIRAL BINDER.

ROTATE STIFFENER TOWARDS END OF WALL AND TRIM AROUND SPIRALNAIL AS REQUIRED. TRIM BOTTOM EDGE OF STIFFENER TO FIT AGAINST SLOPE. SPIRAL TO NEAREST TRANSVERSE WIRE.

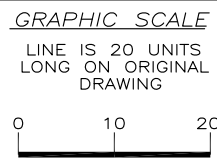
END OF WALL TREATMENT
NOT TO SCALE

CONSTRUCTION SEQUENCE

200123FN - BEACHWOOD REPAIRS

THIS DRAWING IS FURNISHED SOLELY FOR THE USE OF OR IN CONNECTION WITH THIS PROJECT AND THE PROPRIETARY INFORMATION SHOWN HEREON IS NOT TO BE TRANSMITTED TO ANY OTHER ORGANIZATION WITHOUT SPECIFIC AUTHORIZATION BY THE HILFIKER COMPANY. HILFIKER RETAINING WALLS ARE PROTECTED BY ONE OR MORE OF THE FOLLOWING PATENTS: 243,613; 243,697; 288,616; 4,117,686; 4,329,089; 4,324,508; 4,391,557; 4,505,621; 4,343,318; 4,661,023; 4,856,939; 4,929,125; 5,076,735; 5,647,695; 5,722,799; 5,733,072; 6,357,970B1; 6,874,975B2; 7,033,118B2; AND OTHERS. OTHER PATENTS PENDING (2008)

| REV.NO. | DATE | BY | DESCRIPTION |
|---------|------|----|-------------|
| | | | |
| | | | |
| | | | |



PROJ. MGR.
BH
ENGINEER
CADD BY
DH

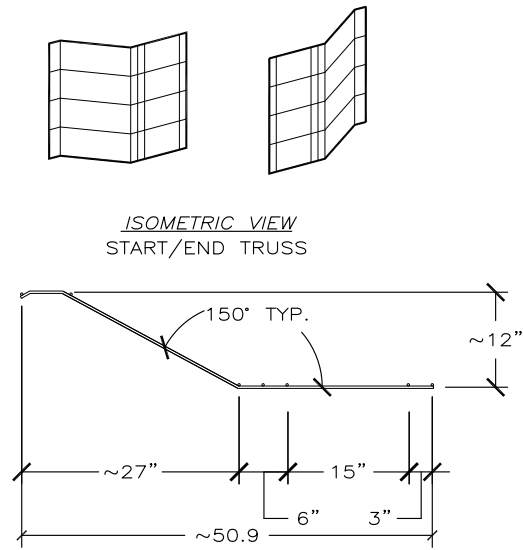
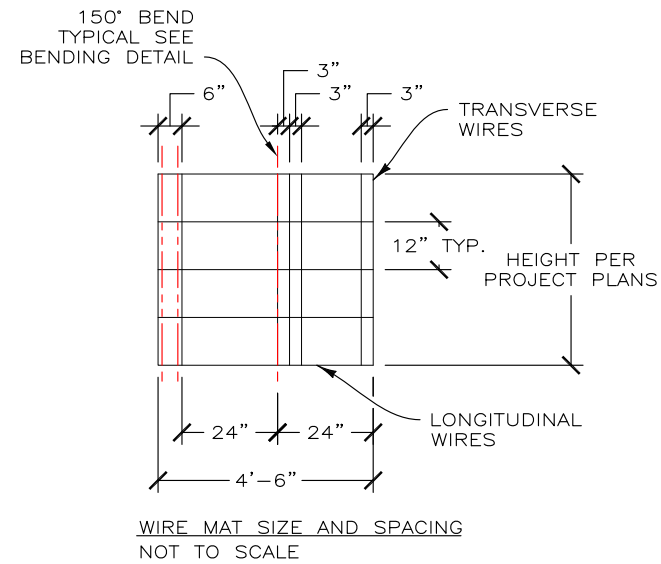
HILFIKER RETAINING WALLS

1902 Hilfiker Lane
Eureka, CA 95503-5711
TOLL-FREE 800.762.8962
PH 707.443.5093 FAX 707.443.2691
WEB SITE www.hilfiker.com E-MAIL info@hilfiker.com

DWG DATE
31 JAN 20
REVISION DATE
SCALE
NOTED

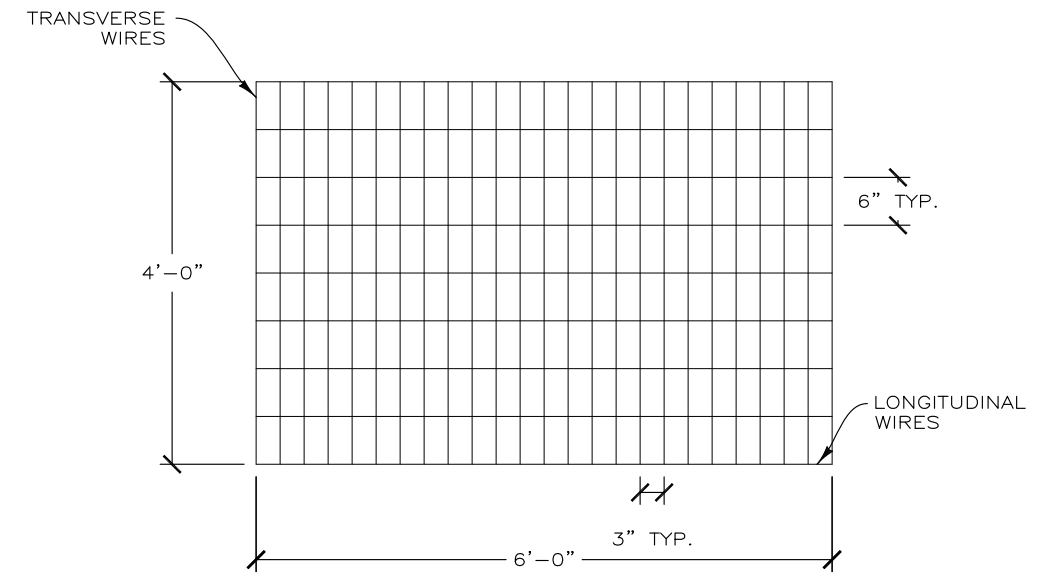
FOR BIDDING PURPOSES ONLY
SPIRALNAIL TRUSS WALL
BEACHWOOD REPAIRS
BOB LEE
EUREKA, CALIFORNIA
TYPICAL DETAILS

PROJECT NO.
200123FN
SHEET
2
OF 4

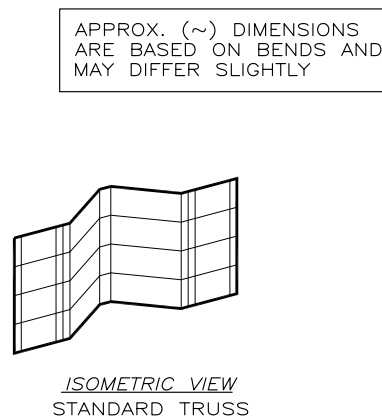
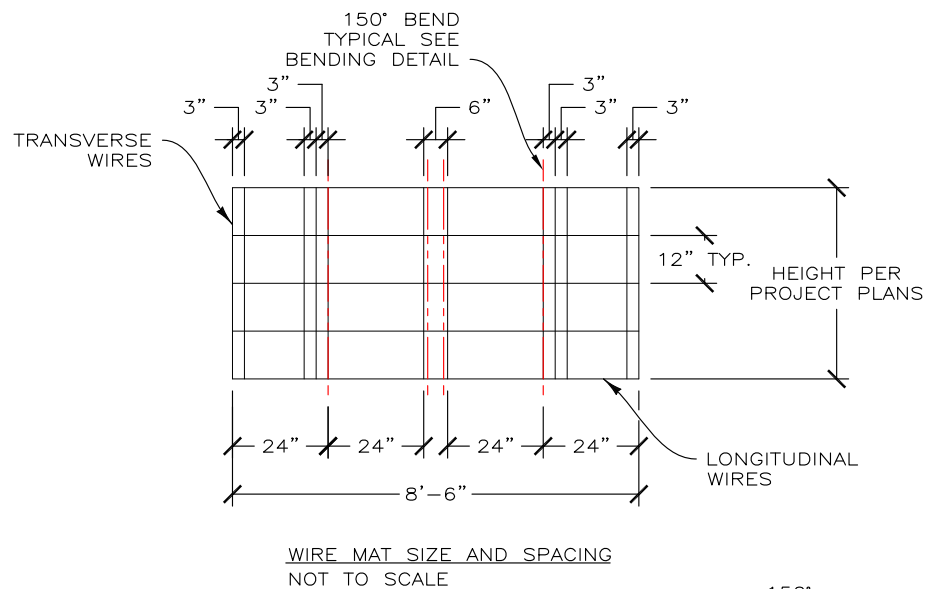


BENDING DETAILS SCALE: 1/2"=1'

START/END TRUSS

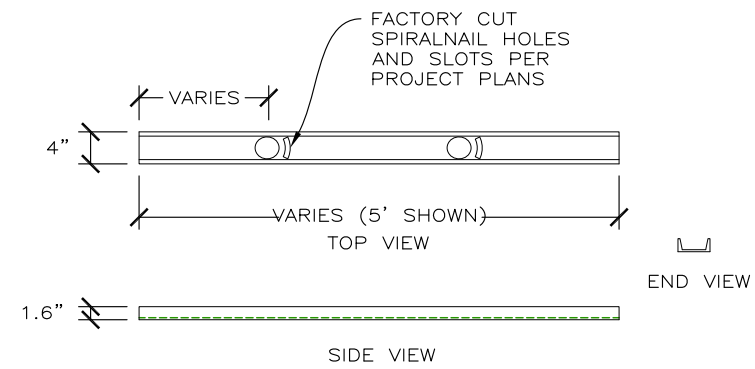


FACING PANEL SCALE: 1/2"=1'

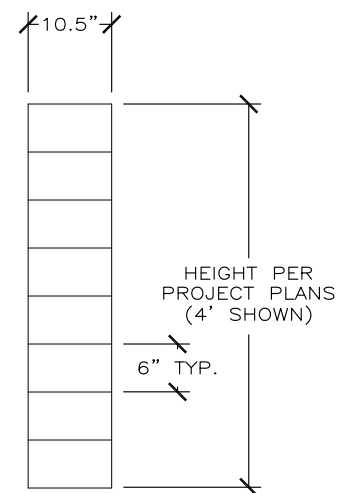


BENDING DETAILS SCALE: 1/2"=1'

STANDARD TRUSS



PILASTER CHANNEL SCALE: 1/2"=1'

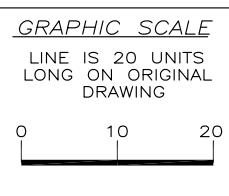


STIFFENER SCALE: 1/2"=1'

200123FN-BEACHWOOD REPAIRS

THIS DRAWING IS FURNISHED SOLELY FOR THE USE OF OR IN CONNECTION WITH THIS PROJECT AND THE PROPRIETARY INFORMATION SHOWN HEREON IS NOT TO BE TRANSMITTED TO ANY OTHER ORGANIZATION WITHOUT SPECIFIC AUTHORIZATION BY THE HILFIKER COMPANY. HILFIKER RETAINING WALLS ARE PROTECTED BY ONE OR MORE OF THE FOLLOWING PATENTS: 243,613; 243,697; 288,616; 4,117,686; 4,329,089; 4,324,508; 4,391,557; 4,505,621; 4,343,318; 4,661,023; 4,856,939; 4,929,125; 5,076,735; 5,647,695; 5,722,799; 5,733,072; 6,357,970B1; 6,874,975B2; 7,033,118B2; AND OTHERS. OTHER PATENTS PENDING (2008)

| REV. NO. | DATE | BY | DESCRIPTION |
|----------|------|----|-------------|
| | | | |
| | | | |
| | | | |



PROJ. MGR. BH
ENGINEER
CADD BY DH

HILFIKER RETAINING WALLS

HW

1902 Hilfiker Lane
Eureka, CA 95503-5711
TOLL-FREE 800.762.8962
PH 707.443.5093 FAX 707.443.2691
WEB SITE www.hilfiker.com E-MAIL info@hilfiker.com

SINCE 1902 QUALITY PRODUCTS

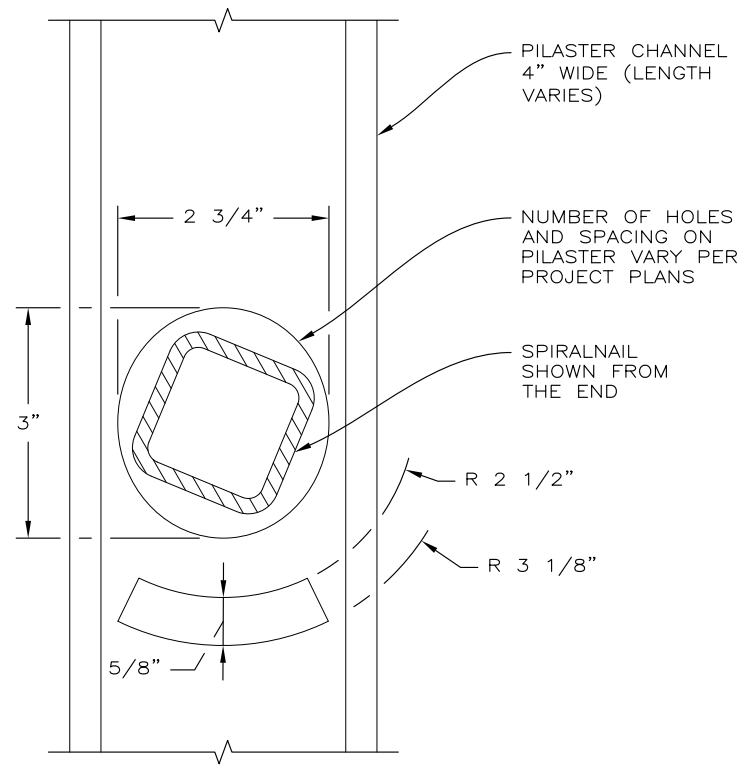
DWG DATE 31 JAN 20
REVISION DATE
SCALE NOTED

FOR BIDDING PURPOSES ONLY

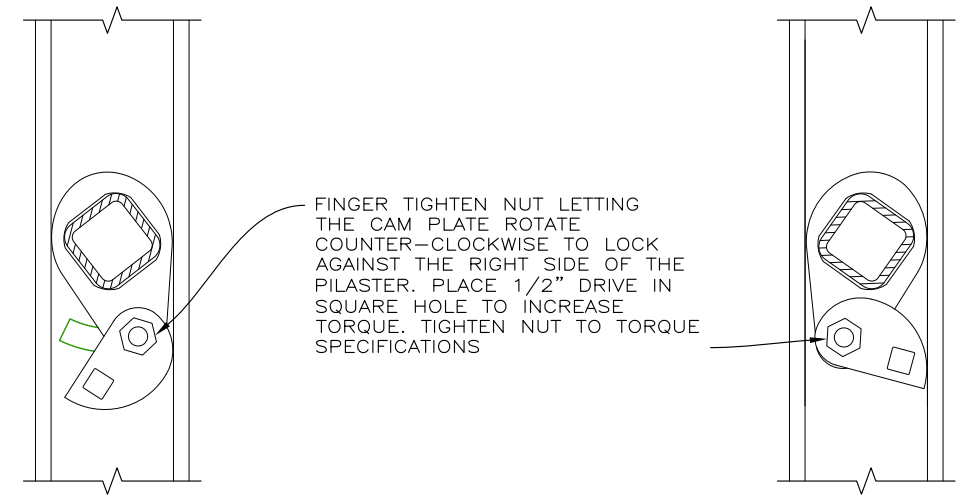
SPIRALNAIL TRUSS WALL
BEACHWOOD REPAIRS
BOB LEE
EUREKA, CALIFORNIA

TYPICAL DETAILS

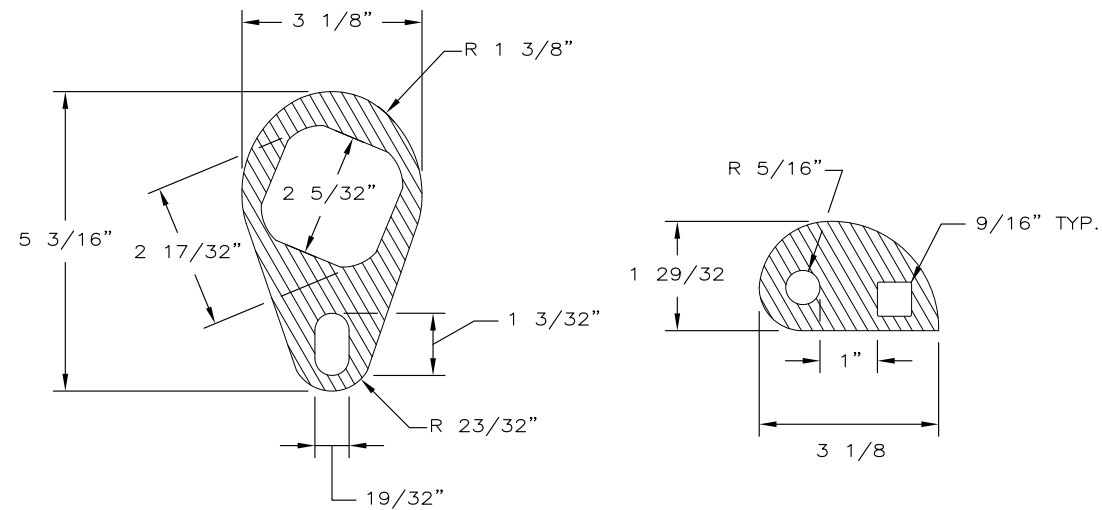
PROJECT NO. 200123FN
SHEET 3 OF 4



PILASTER
NOT TO SCALE



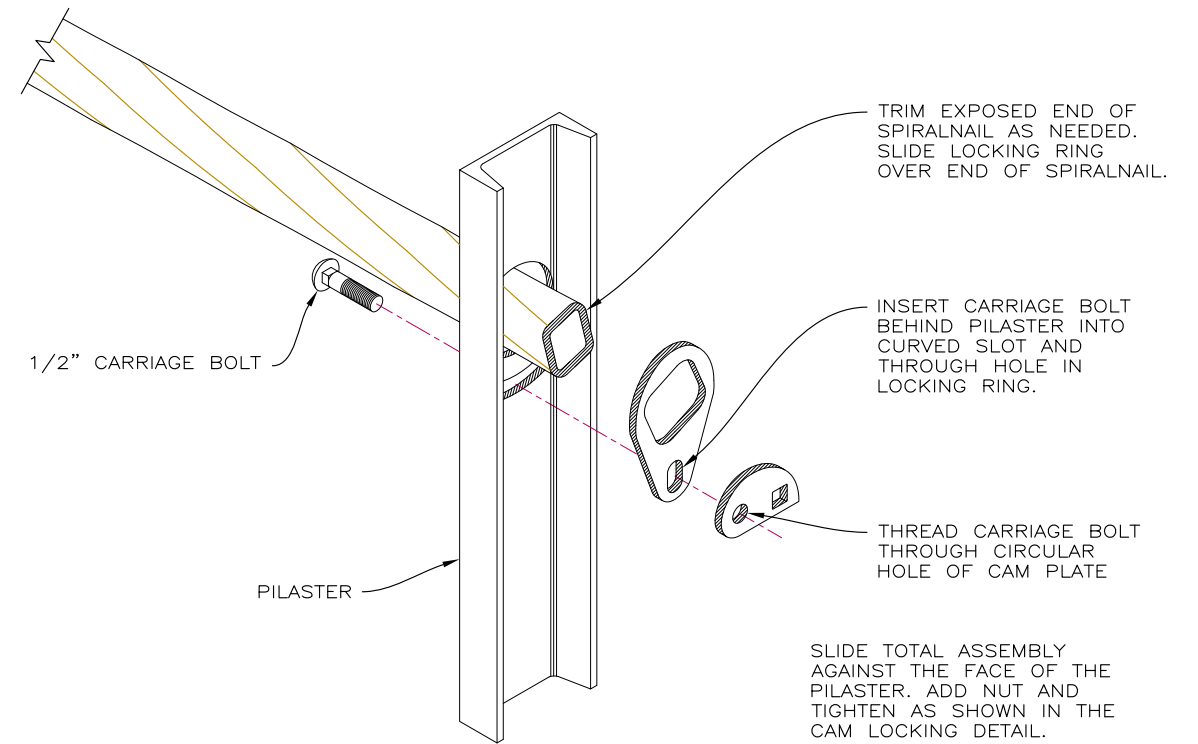
CAM LOCK LOCKING DETAIL
NOT TO SCALE



LOCKING RING
NOT TO SCALE

CAM PLATE
NOT TO SCALE

CAM LOCK COMPONENTS
NOT TO SCALE

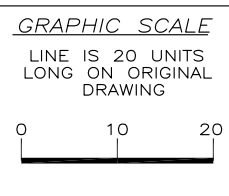


CAM LOCK ASSEMBLY
NOT TO SCALE

200123FN - BEACHWOOD REPAIRS

THIS DRAWING IS FURNISHED SOLELY FOR THE USE OF OR IN CONNECTION WITH THIS PROJECT AND THE PROPRIETARY INFORMATION SHOWN HEREON IS NOT TO BE TRANSMITTED TO ANY OTHER ORGANIZATION WITHOUT SPECIFIC AUTHORIZATION BY THE HILFIKER COMPANY. HILFIKER RETAINING WALLS ARE PROTECTED BY ONE OR MORE OF THE FOLLOWING PATENTS: 243,613; 243,697; 288,616; 4,117,686; 4,329,089; 4,324,508; 4,391,557; 4,505,621; 4,343,318; 4,661,023; 4,856,939; 4,929,125; 5,076,735; 5,647,695; 5,722,799; 5,733,072; 6,357,970B1; 6,874,975B2; 7,033,118B2; AND OTHERS. OTHER PATENTS PENDING (2008)

| REV. NO. | DATE | BY | DESCRIPTION |
|----------|------|----|-------------|
| | | | |
| | | | |
| | | | |



PROJ. MGR.
BH

ENGINEER

CADD BY
DH

HILFIKER RETAINING WALLS

1902 Hilfiker Lane
Eureka, CA 95503-5711
TOLL-FREE 800.762.8962
PH 707.443.5093 FAX 707.443.2691
WEB SITE www.hilfiker.com E-MAIL info@hilfiker.com

DWG DATE
31 JAN 20

REVISION DATE

SCALE
NOTED

FOR BIDDING PURPOSES ONLY

SPIRALNAIL TRUSS WALL
BEACHWOOD REPAIRS
BOB LEE
EUREKA, CALIFORNIA

TYPICAL DETAILS

PROJECT NO.
200123FN

SHEET
4
OF 4